

Data Path : Z:\pestpcbsrv\HPCHEM1\FID\_B\Data\FB102120\  
 Data File : FB025125.D  
 Signal(s) : FID2B.CH  
 Acq On : 21 Oct 2020 12:36  
 Operator : DD/AJ  
 Sample : 20 PPB GRO STD  
 Misc :  
 ALS Vial : 7 Sample Multiplier: 1

Integration File: Calibration.e  
 Quant Time: Oct 22 00:37:10 2020  
 Quant Method : Z:\pestpcbsrv\HPCHEM1\FID\_B\Method\FB101920.M  
 Quant Title :  
 QLast Update : Mon Oct 19 13:01:11 2020  
 Response via : Initial Calibration  
 Integrator: ChemStation

Volume Inj. : 5 g/ml  
 Signal Phase : RTX-502.2  
 Signal Info : 60mx0.53mmx3.00um

Compound	R.T.	Response	Conc Units
-----			
System Monitoring Compounds			
5) s AAA-TFT	8.800	409256	19.171 ng/ml
Target Compounds			
1) t 2-Methylpentane	4.689	921807	30.308 ng/ml
2) t 2,2,4-Trimethylpentane	7.419	959755	30.809 ng/ml
3) t n-Heptane	7.758	315691	10.268 ng/ml
4) t Benzene	7.893	375218	9.984 ng/ml
6) t Toluene	10.631	1061148	29.775 ng/ml
7) t Ethylbenzene	13.071	320126	9.834 ng/ml
8) t m-Xylene	13.204	639501	19.940 ng/ml
9) t O-Xylene	13.931	618024	20.048 ng/ml
10) t 1,2,4-Trimethylbenzene	16.208	514616	19.710 ng/ml
-----			

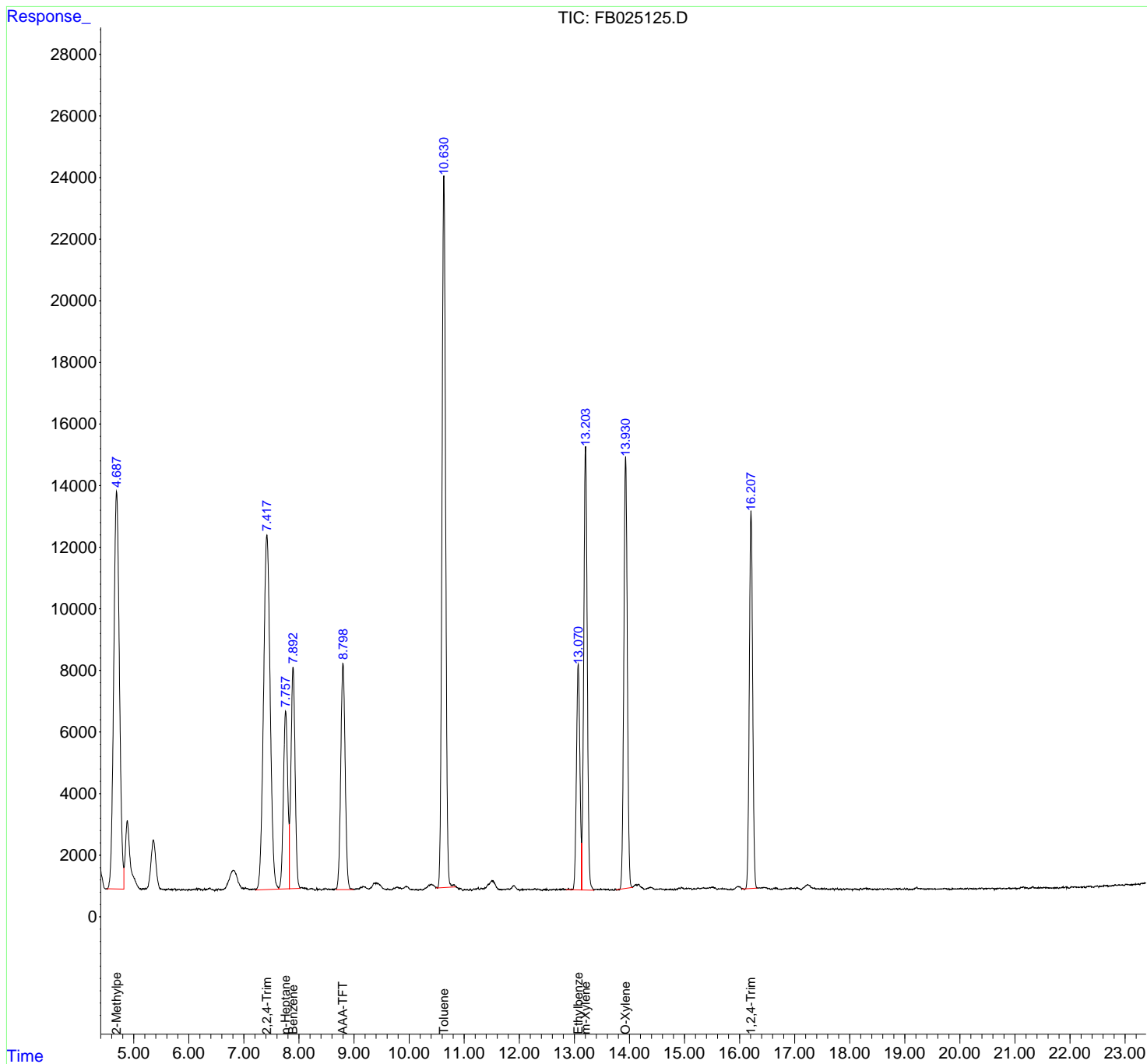
(f)=RT Delta > 1/2 Window

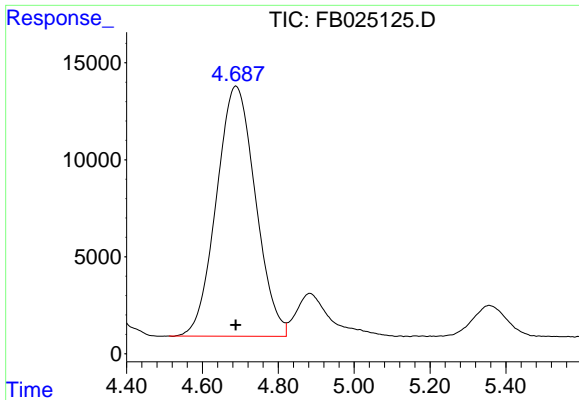
(m)=manual int.

Data Path : Z:\pestpcbsrv\HPCHEM1\FID\_B\Data\FB102120\  
 Data File : FB025125.D  
 Signal(s) : FID2B.CH  
 Acq On : 21 Oct 2020 12:36  
 Operator : DD/AJ  
 Sample : 20 PPB GRO STD  
 Misc :  
 ALS Vial : 7 Sample Multiplier: 1

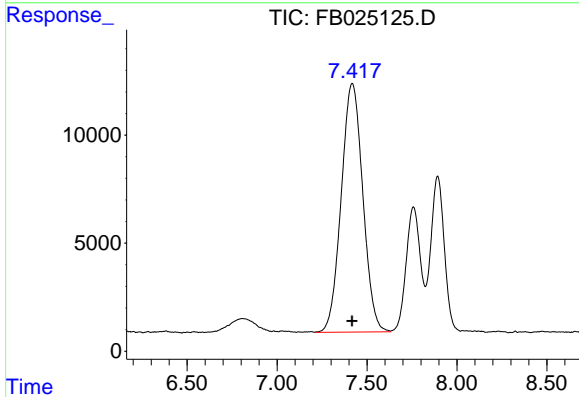
Integration File: Calibration.e  
 Quant Time: Oct 22 00:37:10 2020  
 Quant Method : Z:\pestpcbsrv\HPCHEM1\FID\_B\Method\FB101920.M  
 Quant Title :  
 QLast Update : Mon Oct 19 13:01:11 2020  
 Response via : Initial Calibration  
 Integrator: ChemStation

Volume Inj. : 5 g/ml  
 Signal Phase : RTX-502.2  
 Signal Info : 60mx0.53mmx3.00um

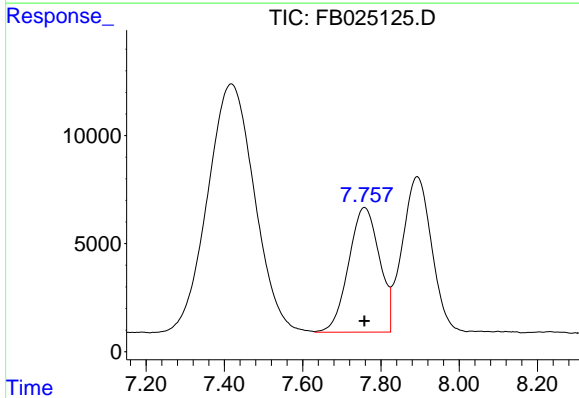




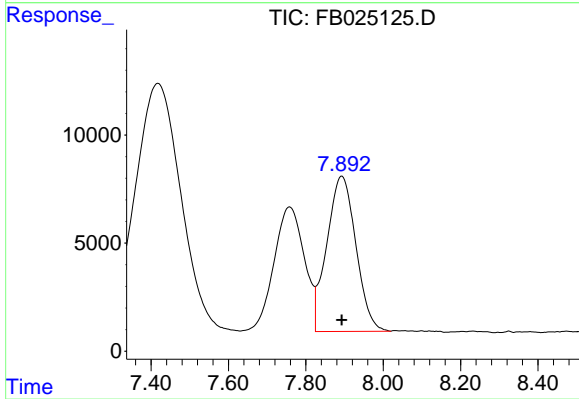
#1 2-Methylpentane  
 R.T.: 4.689 min  
 Delta R.T.: 0.000 min  
 Response: 921807  
 Conc: 30.31 ng/ml



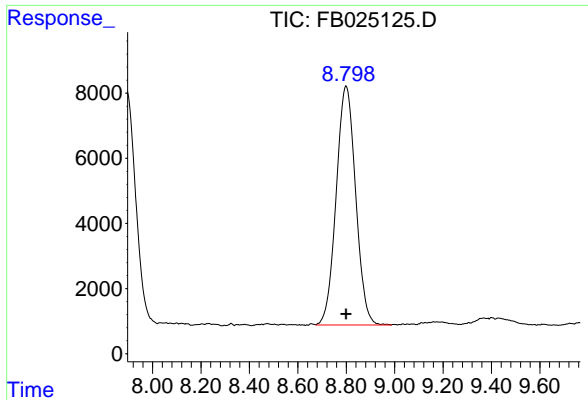
#2 2,2,4-Trimethylpentane  
 R.T.: 7.419 min  
 Delta R.T.: 0.001 min  
 Response: 959755  
 Conc: 30.81 ng/ml



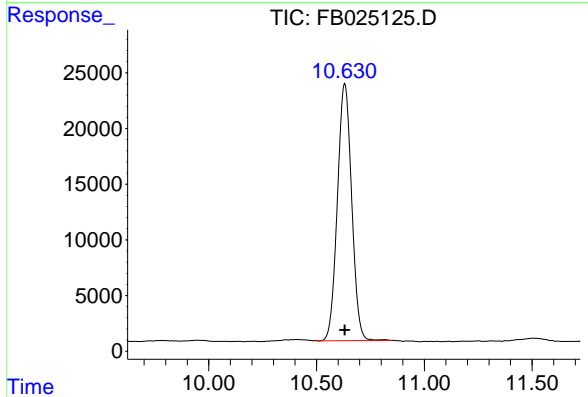
#3 n-Heptane  
 R.T.: 7.758 min  
 Delta R.T.: 0.000 min  
 Response: 315691  
 Conc: 10.27 ng/ml



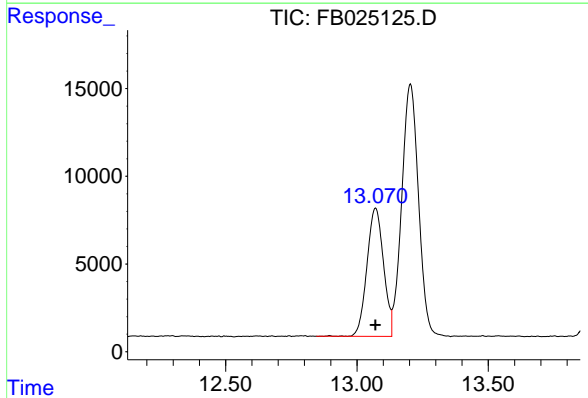
#4 Benzene  
 R.T.: 7.893 min  
 Delta R.T.: 0.000 min  
 Response: 375218  
 Conc: 9.98 ng/ml



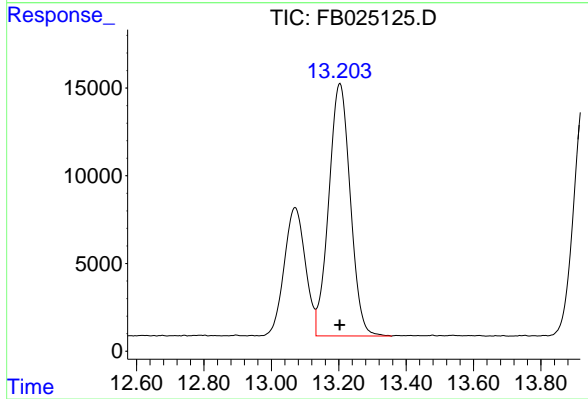
#5 AAA-TFT  
 R.T.: 8.800 min  
 Delta R.T.: 0.000 min  
 Response: 409256  
 Conc: 19.17 ng/ml



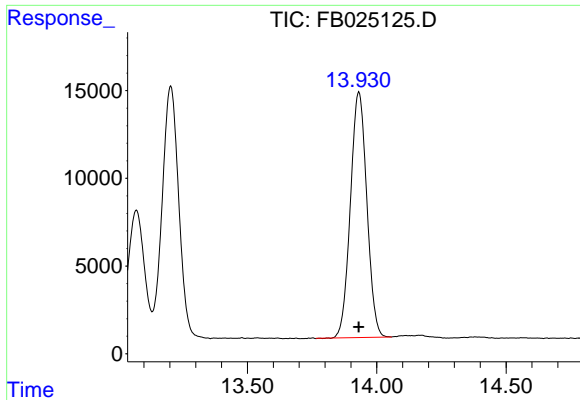
#6 Toluene  
 R.T.: 10.631 min  
 Delta R.T.: 0.000 min  
 Response: 1061148  
 Conc: 29.78 ng/ml



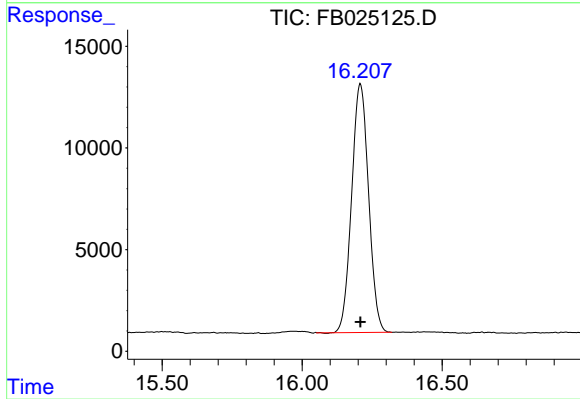
#7 Ethylbenzene  
 R.T.: 13.071 min  
 Delta R.T.: 0.000 min  
 Response: 320126  
 Conc: 9.83 ng/ml



#8 m-Xylene  
 R.T.: 13.204 min  
 Delta R.T.: 0.000 min  
 Response: 639501  
 Conc: 19.94 ng/ml



#9 O-Xylene  
R.T.: 13.931 min  
Delta R.T.: 0.000 min  
Response: 618024  
Conc: 20.05 ng/ml



#10 1,2,4-Trimethylbenzene  
R.T.: 16.208 min  
Delta R.T.: 0.000 min  
Response: 514616  
Conc: 19.71 ng/ml