

Data Path : Z:\pestpcbsrv\HPCHEM1\FID\_B\Data\FB102218\  
 Data File : FB018311.D  
 Signal(s) : FID2B.CH  
 Acq On : 23 Oct 2018 2:46  
 Operator : MJ/SJ  
 Sample : J5622-03  
 Misc : 5.01g/5.00mL DI Water  
 ALS Vial : 20 Sample Multiplier: 1

Integration File: Calibration.e  
 Quant Time: Oct 23 08:17:09 2018  
 Quant Method : Z:\pestpcbsrv\HPCHEM1\FID\_B\Method\FB101218.M  
 Quant Title :  
 QLast Update : Fri Oct 12 08:04:31 2018  
 Response via : Initial Calibration  
 Integrator: ChemStation

Volume Inj. : 5 g/ml  
 Signal Phase : RTX-502.2  
 Signal Info : 60mx0.53mmx3.00um

Compound	R.T.	Response	Conc Units
-----			
System Monitoring Compounds			
5) s AAA-TFT	9.109	130313	15.130 ng/ml
Target Compounds			
6) t Toluene	10.963	3030	0.199 ng/ml
7) t Ethylbenzene	13.384	33653	2.121 ng/ml
8) t m-Xylene	13.542	8939	0.537 ng/ml
9) t O-Xylene	14.296	15514	0.870 ng/ml
10) t 1,2,4-Trimethylbenzene	16.561	34708	1.706 ng/ml
-----			

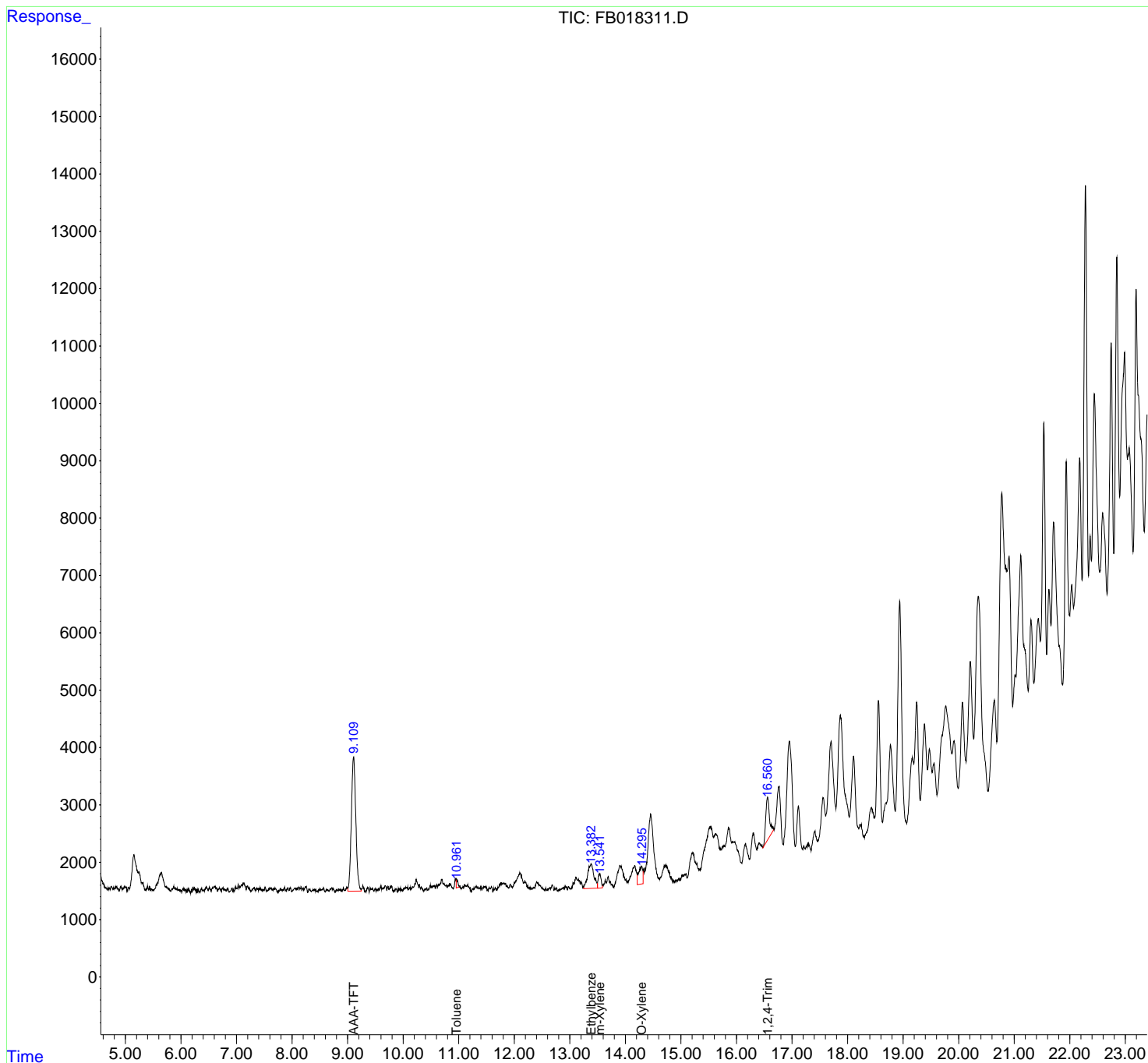
(f)=RT Delta > 1/2 Window

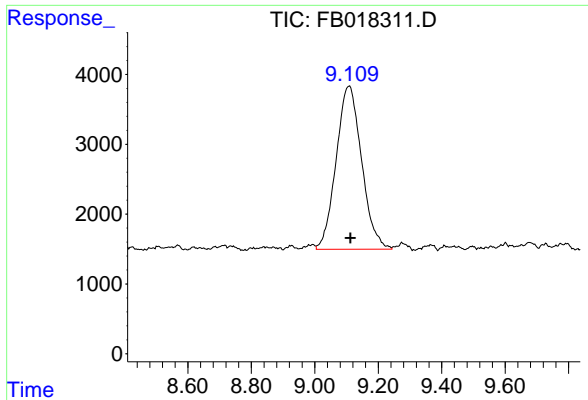
(m)=manual int.

Data Path : Z:\pestpcbsrv\HPCHEM1\FID\_B\Data\FB102218\  
Data File : FB018311.D  
Signal(s) : FID2B.CH  
Acq On : 23 Oct 2018 2:46  
Operator : MJ/SJ  
Sample : J5622-03  
Misc : 5.01g/5.00mL DI Water  
ALS Vial : 20 Sample Multiplier: 1

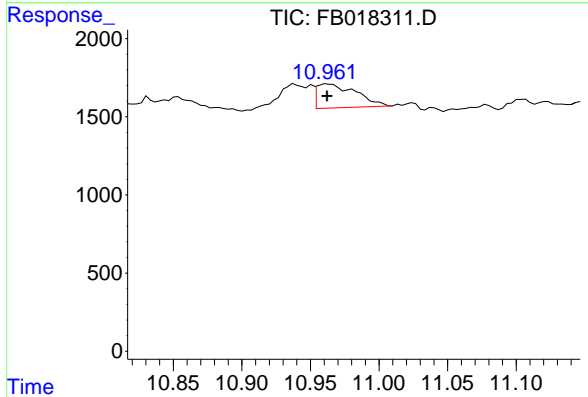
Integration File: Calibration.e  
Quant Time: Oct 23 08:17:09 2018  
Quant Method : Z:\pestpcbsrv\HPCHEM1\FID\_B\Method\FB101218.M  
Quant Title :  
QLast Update : Fri Oct 12 08:04:31 2018  
Response via : Initial Calibration  
Integrator: ChemStation

Volume Inj. : 5 g/ml  
Signal Phase : RTX-502.2  
Signal Info : 60mx0.53mmx3.00um

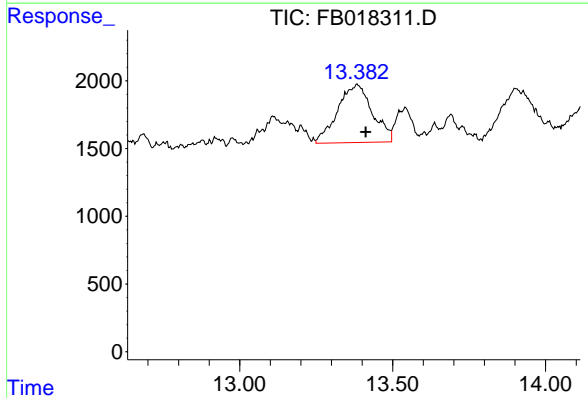




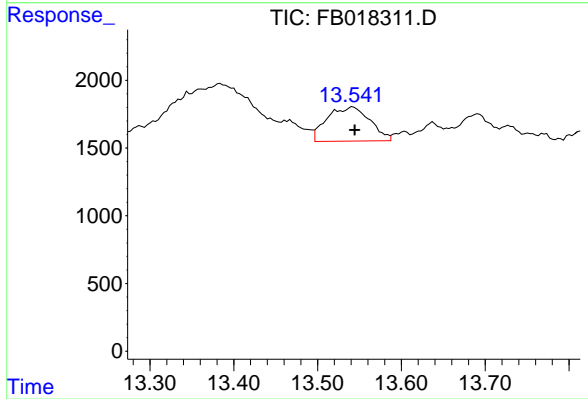
#5 AAA-TFT  
 R.T.: 9.109 min  
 Delta R.T.: -0.003 min  
 Response: 130313  
 Conc: 15.13 ng/ml



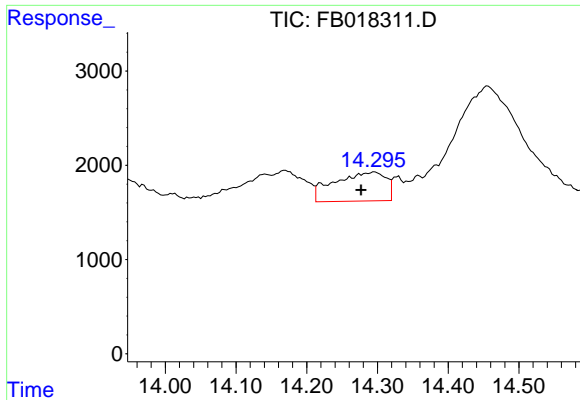
#6 Toluene  
 R.T.: 10.963 min  
 Delta R.T.: 0.001 min  
 Response: 3030  
 Conc: 0.20 ng/ml



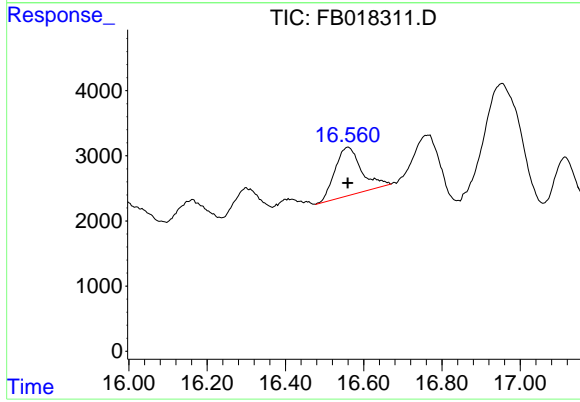
#7 Ethylbenzene  
 R.T.: 13.384 min  
 Delta R.T.: -0.028 min  
 Response: 33653  
 Conc: 2.12 ng/ml



#8 m-Xylene  
 R.T.: 13.542 min  
 Delta R.T.: -0.002 min  
 Response: 8939  
 Conc: 0.54 ng/ml



#9 O-Xylene  
R.T.: 14.296 min  
Delta R.T.: 0.020 min  
Response: 15514  
Conc: 0.87 ng/ml



#10 1,2,4-Trimethylbenzene  
R.T.: 16.561 min  
Delta R.T.: 0.001 min  
Response: 34708  
Conc: 1.71 ng/ml