

Data Path : Z:\pestpcbsrv\HPCHEM1\FID_B\Data\FB102522\
 Data File : FB028726.D
 Signal(s) : FID2B.CH
 Acq On : 25 Oct 2022 11:33
 Operator : AJ/MA
 Sample : N5217-12
 Misc : 5.02G/5.00 ML DI WATER
 ALS Vial : 5 Sample Multiplier: 1

Instrument :
 FID_B
ClientSampleId :
 SB-M1-COMP

Integration File: Calibration.e
 Quant Time: Oct 26 05:36:15 2022
 Quant Method : Z:\pestpcbsrv\HPCHEM1\FID_B\Method\FB100522.M
 Quant Title :
 QLast Update : Wed Oct 05 12:47:25 2022
 Response via : Initial Calibration
 Integrator: ChemStation

Volume Inj. : 5 g/ml
 Signal Phase : RTX-502.2
 Signal Info : 60mx0.53mmx3.00um

Compound	R.T.	Response	Conc Units
----------	------	----------	------------

 System Monitoring Compounds

Target Compounds

(f)=RT Delta > 1/2 Window

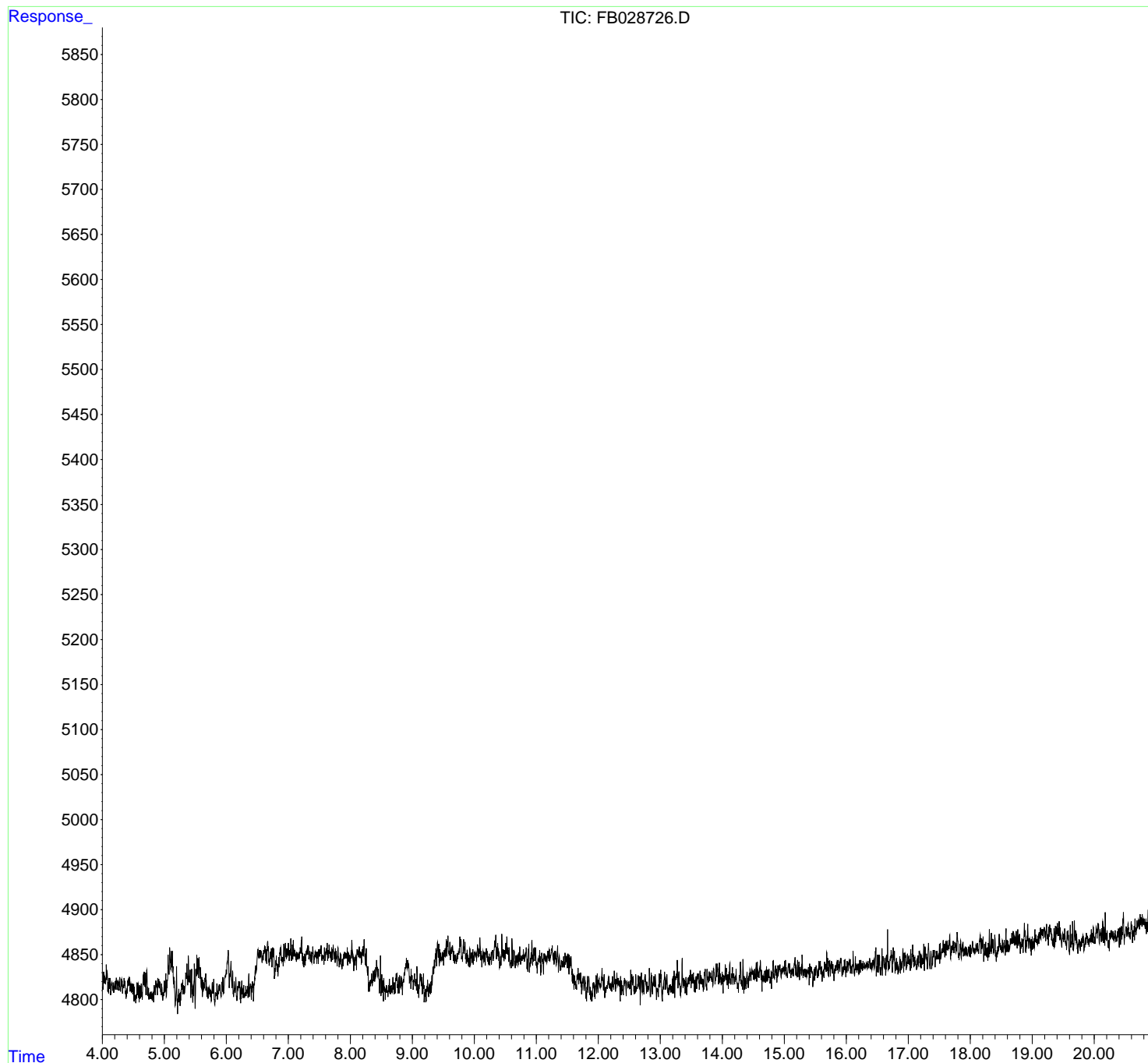
(m)=manual int.

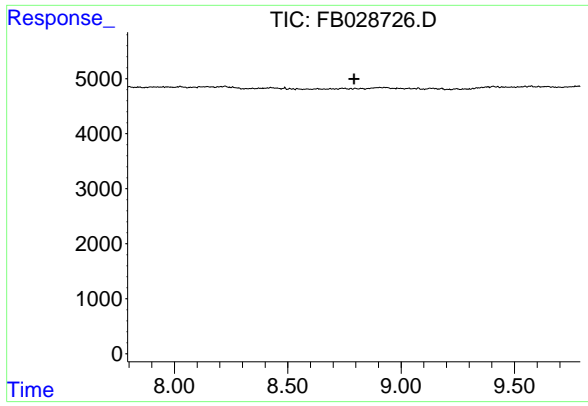
Data Path : Z:\pestpcbsrv\HPCHEM1\FID_B\Data\FB102522\
Data File : FB028726.D
Signal(s) : FID2B.CH
Acq On : 25 Oct 2022 11:33
Operator : AJ/MA
Sample : N5217-12
Misc : 5.02G/5.00 ML DI WATER
ALS Vial : 5 Sample Multiplier: 1

Instrument :
FID_B
ClientSampleId :
SB-M1-COMP

Integration File: Calibration.e
Quant Time: Oct 26 05:36:15 2022
Quant Method : Z:\pestpcbsrv\HPCHEM1\FID_B\Method\FB100522.M
Quant Title :
QLast Update : Wed Oct 05 12:47:25 2022
Response via : Initial Calibration
Integrator: ChemStation

Volume Inj. : 5 g/ml
Signal Phase : RTX-502.2
Signal Info : 60mx0.53mmx3.00um





#5 AAA-TFT

R.T.: 0.000 min
Exp R.T.: 8.793 min
Response: 0
Conc: N.D.

Instrument : FID_B
ClientSampleId : SB-M1-COMP