

Data Path : Z:\pestpcbsrv\HPCHEM1\FID_B\Data\FB110819\
 Data File : FB022948.D
 Signal(s) : FID2B.CH
 Acq On : 8 Nov 2019 18:29
 Operator : DD/AJ
 Sample : K5742-05 300X
 Misc : 5.00g/5.00ml DI WATER
 ALS Vial : 17 Sample Multiplier: 1

Instrument :
 FID_B
 ClientSampleId :
 SB-22-(14-15)

Integration File: Calibration.e
 Quant Time: Nov 08 23:42:50 2019
 Quant Method : Z:\pestpcbsrv\HPCHEM1\FID_B\Method\FB103119.M
 Quant Title :
 QLast Update : Thu Oct 31 14:57:42 2019
 Response via : Initial Calibration
 Integrator: ChemStation

Volume Inj. : 5 g/ml
 Signal Phase : RTX-502.2
 Signal Info : 60mx0.53mmx3.00um

Compound	R.T.	Response	Conc Units

System Monitoring Compounds			
5) s AAA-TFT	8.804	741100	32.920 ng/ml
Target Compounds			
1) t 2-Methylpentane	4.685	87087	2.707 ng/ml
2) t 2,2,4-Trimethylpentane	7.383	39826	1.128 ng/ml
3) t n-Heptane	7.752	497349	14.298 ng/ml
7) t Ethylbenzene	13.060	128259	3.213 ng/ml
8) t m-Xylene	13.196	162560	4.304 ng/ml
9) t O-Xylene	13.925	15900	0.446 ng/ml
10) t 1,2,4-Trimethylbenzene	16.206	194328	6.853 ng/ml

(f)=RT Delta > 1/2 Window

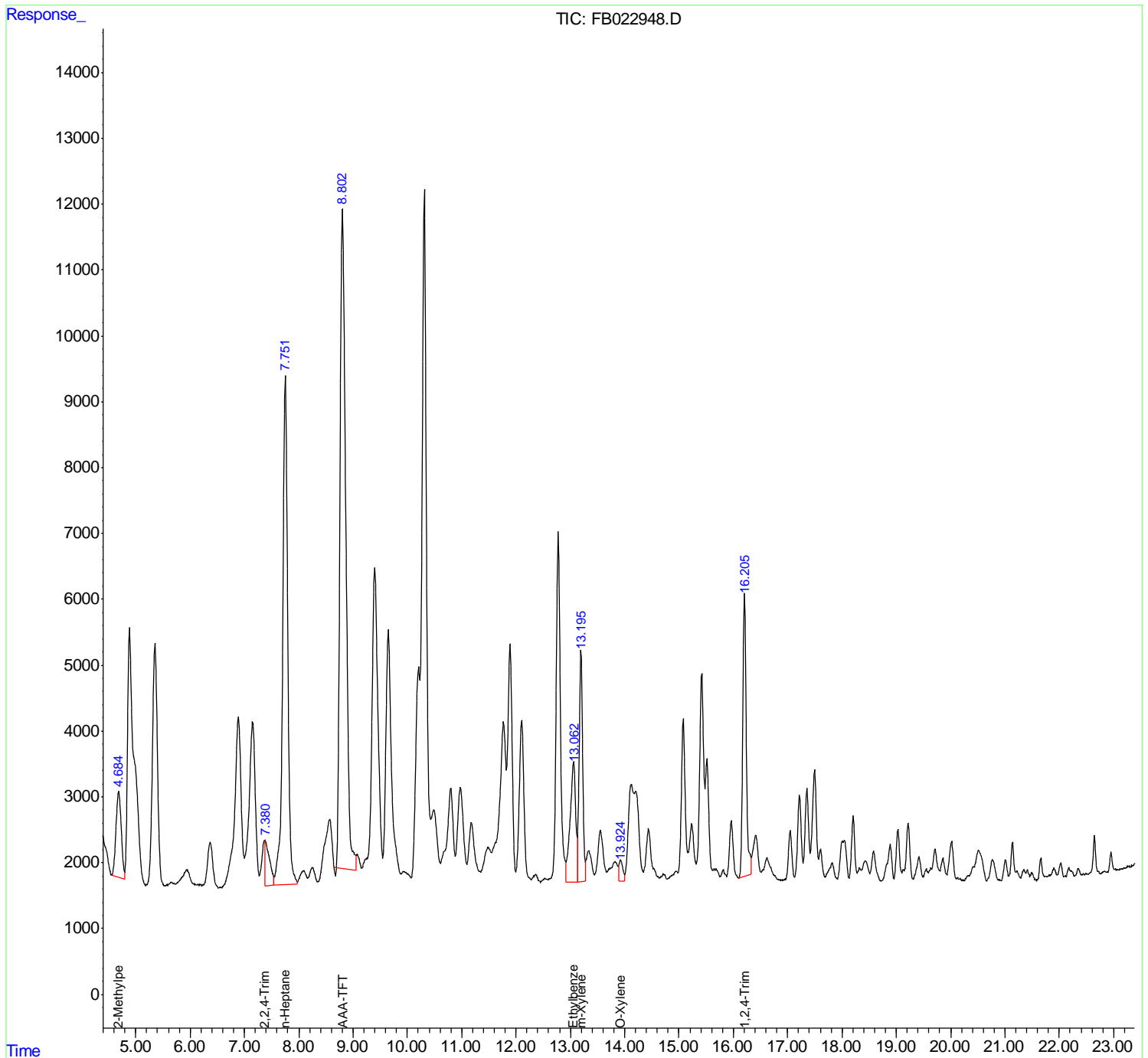
(m)=manual int.

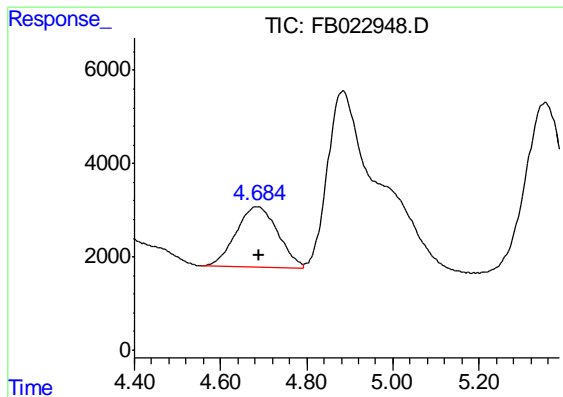
Data Path : Z:\pestpcbsrv\HPCHEM1\FID_B\Data\FB110819\
 Data File : FB022948.D
 Signal(s) : FID2B.CH
 Acq On : 8 Nov 2019 18:29
 Operator : DD/AJ
 Sample : K5742-05 300X
 Misc : 5.00g/5.00ml DI WATER
 ALS Vial : 17 Sample Multiplier: 1

Instrument :
 FID_B
 ClientSampled :
 SB-22-(14-15)

Integration File: Calibration.e
 Quant Time: Nov 08 23:42:50 2019
 Quant Method : Z:\pestpcbsrv\HPCHEM1\FID_B\Method\FB103119.M
 Quant Title :
 QLast Update : Thu Oct 31 14:57:42 2019
 Response via : Initial Calibration
 Integrator: ChemStation

Volume Inj. : 5 g/ml
 Signal Phase : RTX-502.2
 Signal Info : 60mx0.53mmx3.00um

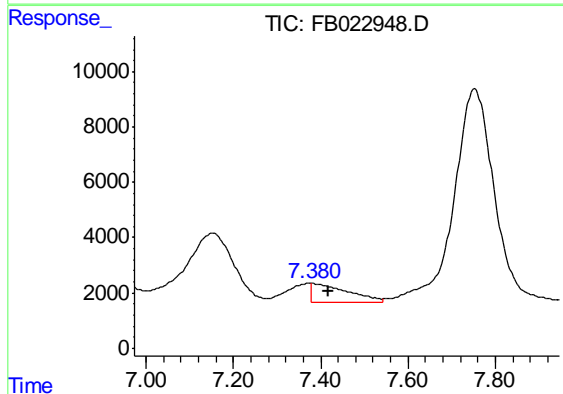




#1 2-Methylpentane

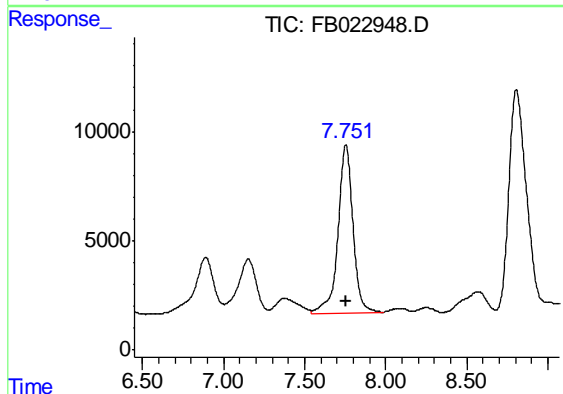
R.T.: 4.685 min
 Delta R.T.: -0.004 min
 Response: 87087
 Conc: 2.71 ng/ml

Instrument :
 FID_B
 ClientSampleId :
 SB-22-(14-15)



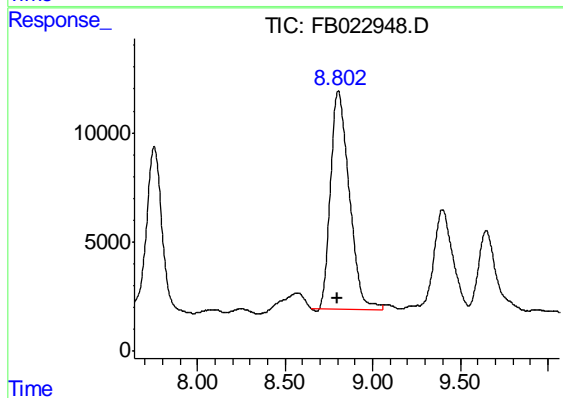
#2 2,2,4-Trimethylpentane

R.T.: 7.383 min
 Delta R.T.: -0.035 min
 Response: 39826
 Conc: 1.13 ng/ml



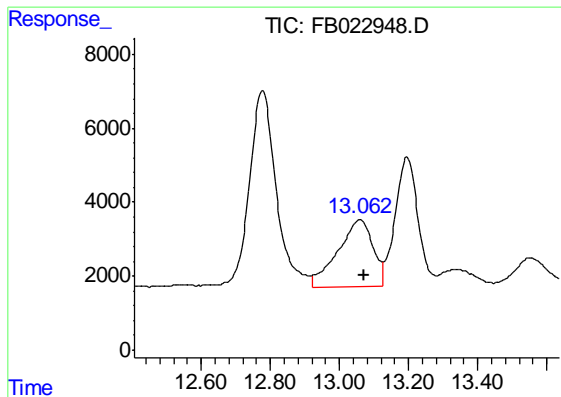
#3 n-Heptane

R.T.: 7.752 min
 Delta R.T.: -0.006 min
 Response: 497349
 Conc: 14.30 ng/ml



#5 AAA-TFT

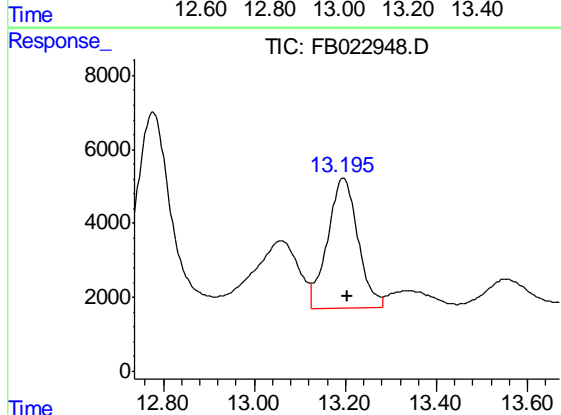
R.T.: 8.804 min
 Delta R.T.: 0.005 min
 Response: 741100
 Conc: 32.92 ng/ml



#7 Ethylbenzene

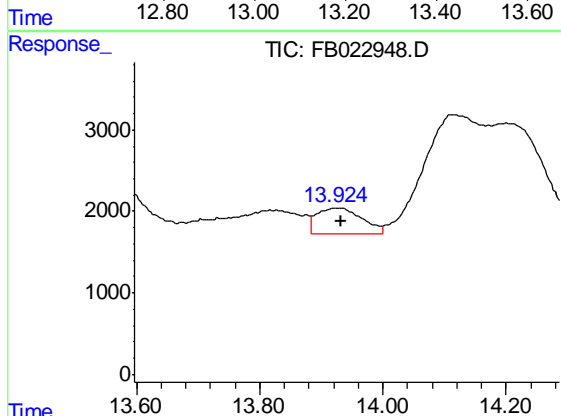
R.T.: 13.060 min
 Delta R.T.: -0.012 min
 Response: 128259
 Conc: 3.21 ng/ml

Instrument :
 FID_B
 ClientSampleId :
 SB-22-(14-15)



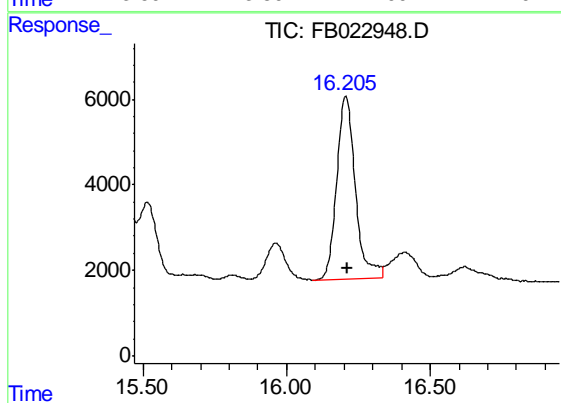
#8 m-Xylene

R.T.: 13.196 min
 Delta R.T.: -0.009 min
 Response: 162560
 Conc: 4.30 ng/ml



#9 o-Xylene

R.T.: 13.925 min
 Delta R.T.: -0.007 min
 Response: 15900
 Conc: 0.45 ng/ml



#10 1,2,4-Trimethylbenzene

R.T.: 16.206 min
 Delta R.T.: -0.005 min
 Response: 194328
 Conc: 6.85 ng/ml