

Data Path : Z:\pestpcbsrv\HPCHEM1\FID_B\Data\FB110918\
 Data File : FB018642.D
 Signal(s) : FID2B.CH
 Acq On : 10 Nov 2018 00:22
 Operator : MJ/SJ
 Sample : J5768-01
 Misc : 5.05g/5.00ml DI WATER
 ALS Vial : 15 Sample Multiplier: 1

Integration File: Calibration.e
 Quant Time: Nov 10 08:39:07 2018
 Quant Method : Z:\pestpcbsrv\HPCHEM1\FID_B\Method\FB110918.M
 Quant Title :
 QLast Update : Fri Nov 09 10:53:13 2018
 Response via : Initial Calibration
 Integrator: ChemStation

Volume Inj. : 5 g/ml
 Signal Phase : RTX-502.2
 Signal Info : 60mx0.53mmx3.00um

Compound	R.T.	Response	Conc Units

System Monitoring Compounds			
5) s AAA-TFT	9.110	161548	18.729 ng/ml
Target Compounds			
1) t 2-Methylpentane	4.955	2116	0.145 ng/ml

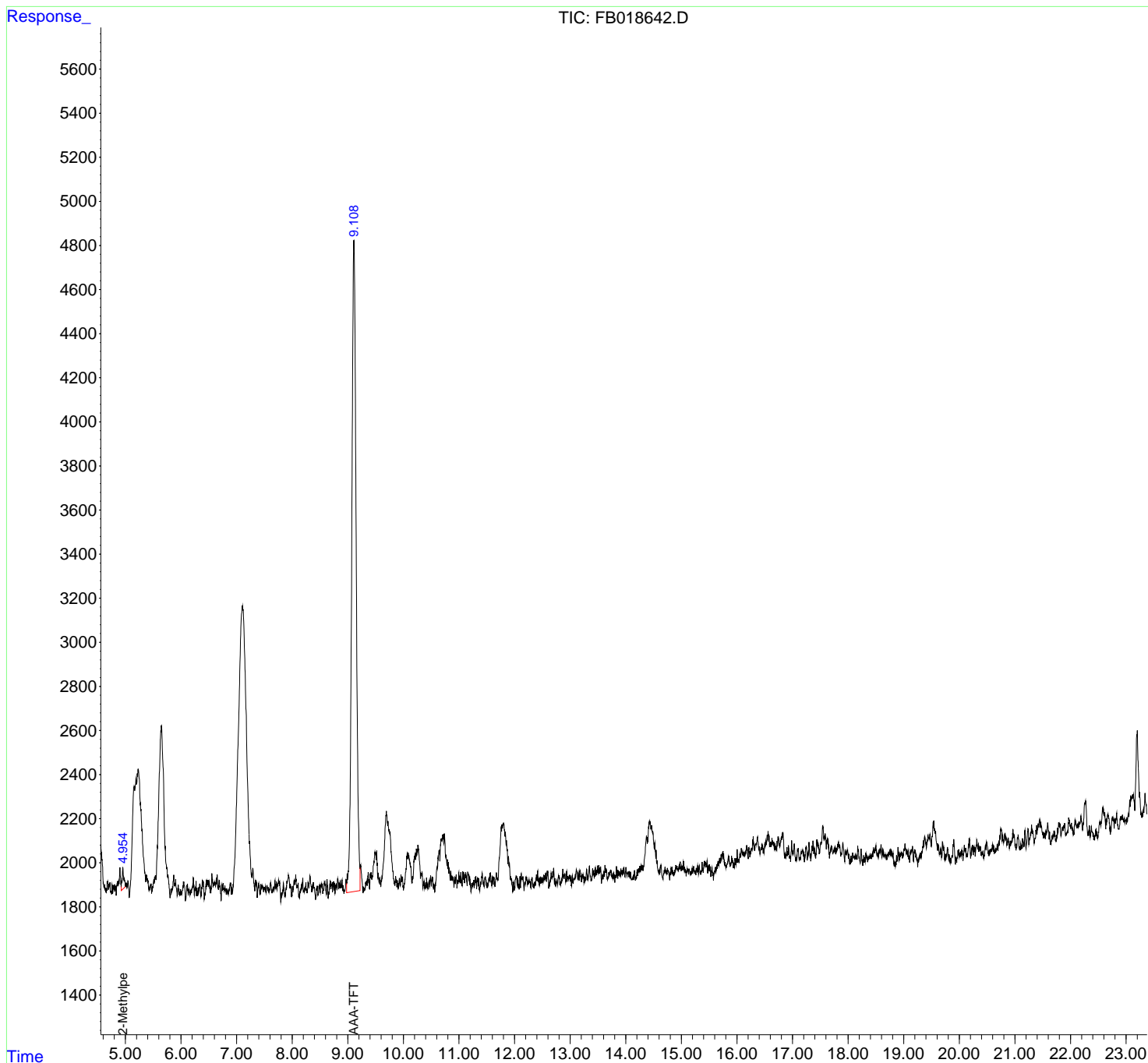
(f)=RT Delta > 1/2 Window

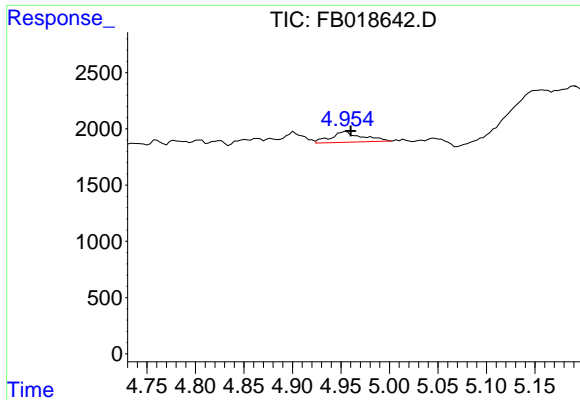
(m)=manual int.

Data Path : Z:\pestpcbsrv\HPCHEM1\FID_B\Data\FB110918\
 Data File : FB018642.D
 Signal(s) : FID2B.CH
 Acq On : 10 Nov 2018 00:22
 Operator : MJ/SJ
 Sample : J5768-01
 Misc : 5.05g/5.00ml DI WATER
 ALS Vial : 15 Sample Multiplier: 1

Integration File: Calibration.e
 Quant Time: Nov 10 08:39:07 2018
 Quant Method : Z:\pestpcbsrv\HPCHEM1\FID_B\Method\FB110918.M
 Quant Title :
 QLast Update : Fri Nov 09 10:53:13 2018
 Response via : Initial Calibration
 Integrator: ChemStation

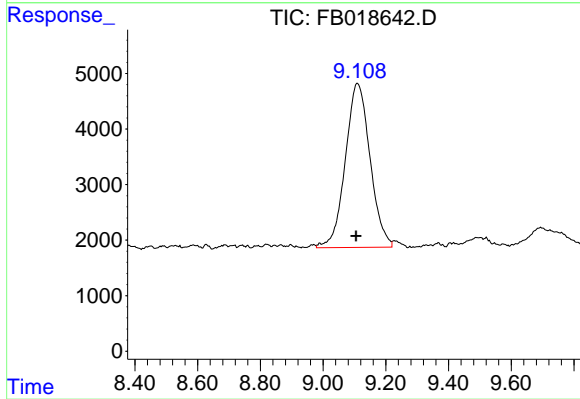
Volume Inj. : 5 g/ml
 Signal Phase : RTX-502.2
 Signal Info : 60mx0.53mmx3.00um





#1 2-Methylpentane

R.T.: 4.955 min
Delta R.T.: -0.005 min
Response: 2116
Conc: 0.14 ng/ml



#5 AAA-TFT

R.T.: 9.110 min
Delta R.T.: 0.005 min
Response: 161548
Conc: 18.73 ng/ml