

Data Path : Z:\pestpcbsrv\HPCHEM1\FID_B\Data\FB111018\
 Data File : FB018677.D
 Signal(s) : FID2B.CH
 Acq On : 10 Nov 2018 18:43
 Operator : MJ/SJ
 Sample : 20 PPB GRO STD
 Misc :
 ALS Vial : 16 Sample Multiplier: 1

Integration File: Calibration.e
 Quant Time: Nov 12 05:51:15 2018
 Quant Method : Z:\pestpcbsrv\HPCHEM1\FID_B\Method\FB110918.M
 Quant Title :
 QLast Update : Fri Nov 09 10:53:13 2018
 Response via : Initial Calibration
 Integrator: ChemStation

Volume Inj. : 5 g/ml
 Signal Phase : RTX-502.2
 Signal Info : 60mx0.53mmx3.00um

Compound	R.T.	Response	Conc Units

System Monitoring Compounds			
5) s AAA-TFT	9.107	172274	19.972 ng/ml
Target Compounds			
1) t 2-Methylpentane	4.961	506807	34.652 ng/ml
2) t 2,2,4-Trimethylpentane	7.724	506326	34.518 ng/ml
3) t n-Heptane	8.062	161472	11.194 ng/ml
4) t Benzene	8.202	206683	11.408 ng/ml
6) t Toluene	10.955	513642	33.967 ng/ml
7) t Ethylbenzene	13.405	169903	10.895 ng/ml
8) t m-Xylene	13.537	361897	21.784 ng/ml
9) t O-Xylene	14.269	377519	22.004 ng/ml
10) t 1,2,4-Trimethylbenzene	16.552	439172	22.139 ng/ml

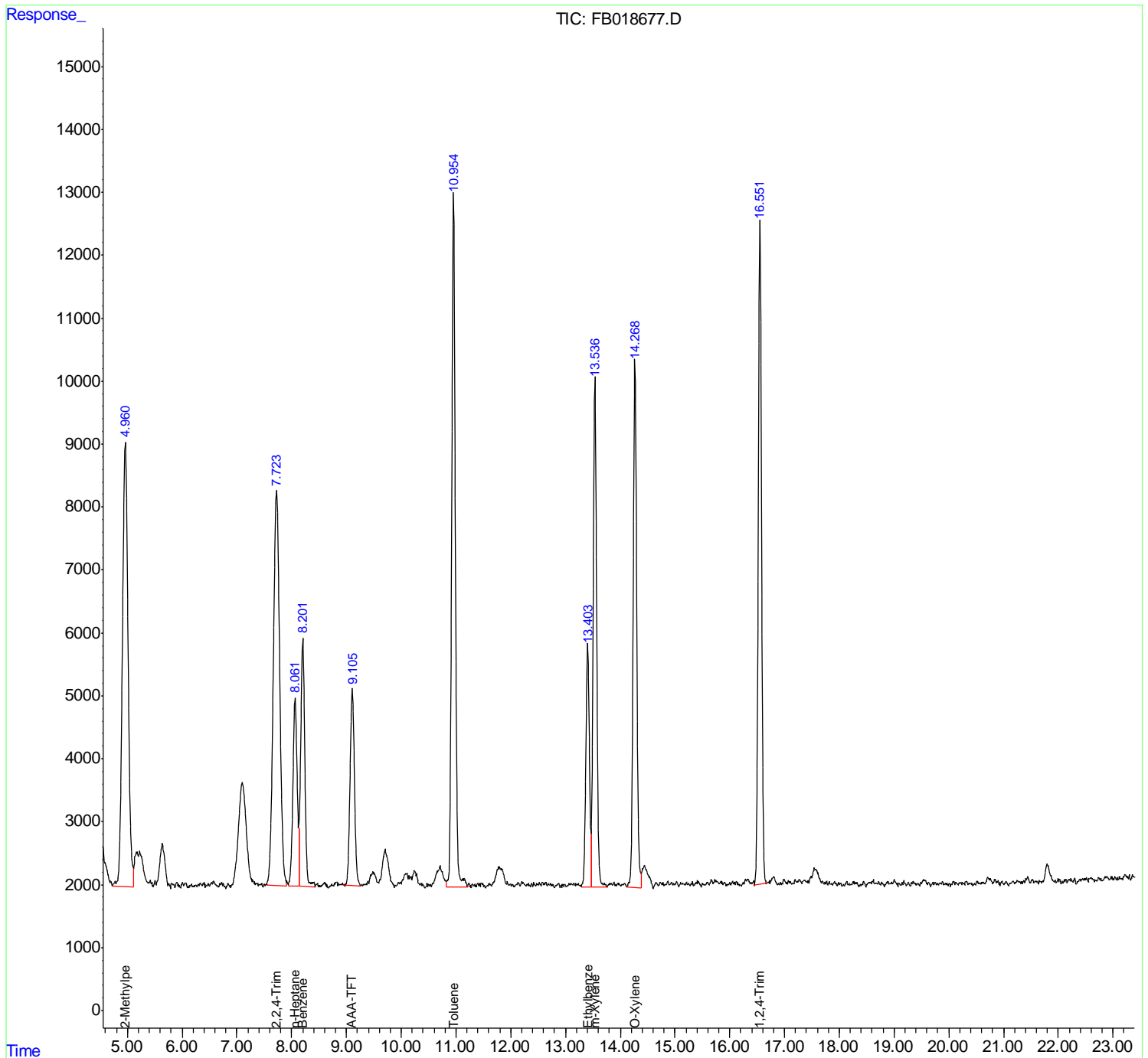
(f)=RT Delta > 1/2 Window

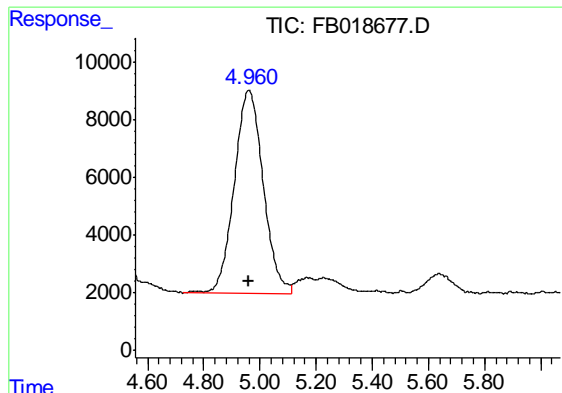
(m)=manual int.

Data Path : Z:\pestpcbsrv\HPCHEM1\FID_B\Data\FB111018\
 Data File : FB018677.D
 Signal(s) : FID2B.CH
 Acq On : 10 Nov 2018 18:43
 Operator : MJ/SJ
 Sample : 20 PPB GRO STD
 Misc :
 ALS Vial : 16 Sample Multiplier: 1

Integration File: Calibration.e
 Quant Time: Nov 12 05:51:15 2018
 Quant Method : Z:\pestpcbsrv\HPCHEM1\FID_B\Method\FB110918.M
 Quant Title :
 QLast Update : Fri Nov 09 10:53:13 2018
 Response via : Initial Calibration
 Integrator: ChemStation

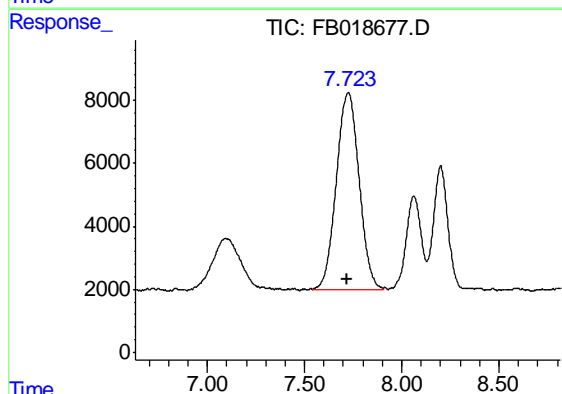
Volume Inj. : 5 g/ml
 Signal Phase : RTX-502.2
 Signal Info : 60mx0.53mmx3.00um





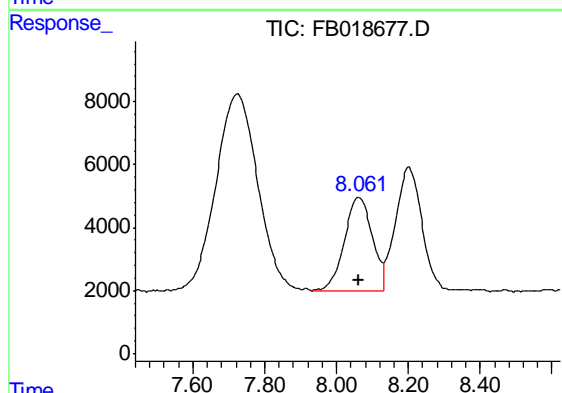
#1 2-Methylpentane

R.T.: 4.961 min
Delta R.T.: 0.001 min
Response: 506807
Conc: 34.65 ng/ml



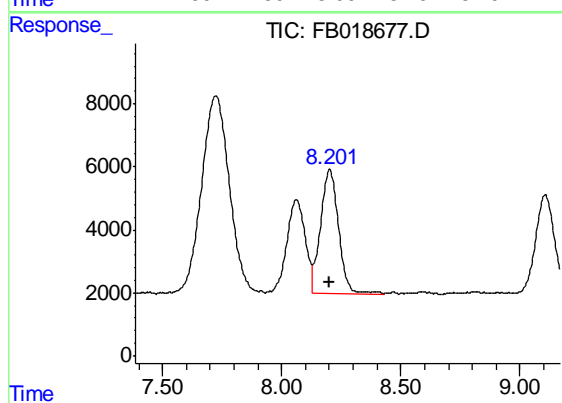
#2 2,2,4-Trimethylpentane

R.T.: 7.724 min
Delta R.T.: 0.000 min
Response: 506326
Conc: 34.52 ng/ml



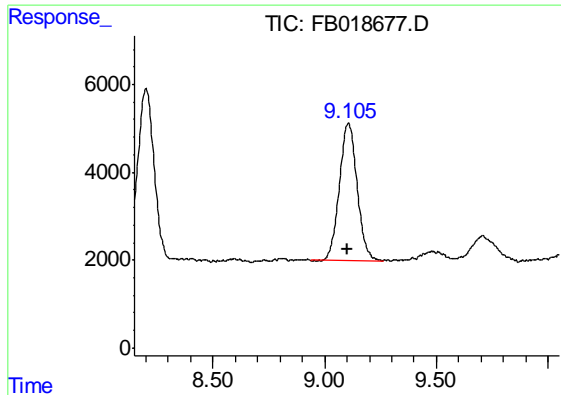
#3 n-Heptane

R.T.: 8.062 min
Delta R.T.: 0.001 min
Response: 161472
Conc: 11.19 ng/ml



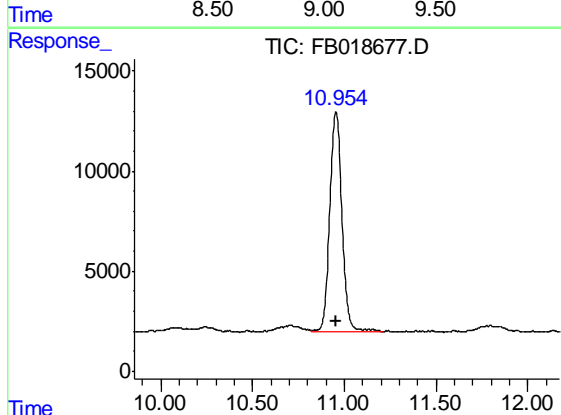
#4 Benzene

R.T.: 8.202 min
Delta R.T.: 0.002 min
Response: 206683
Conc: 11.41 ng/ml



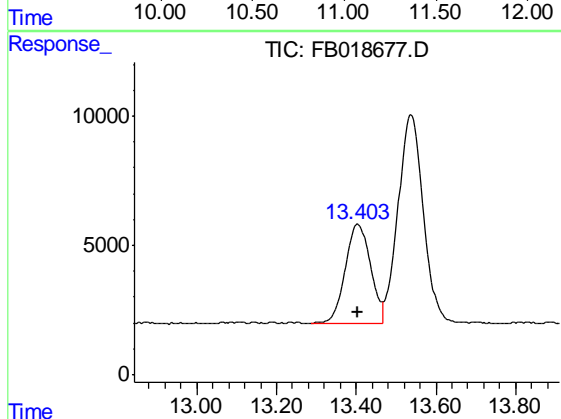
#5 AAA-TFT

R.T.: 9.107 min
Delta R.T.: 0.002 min
Response: 172274
Conc: 19.97 ng/ml



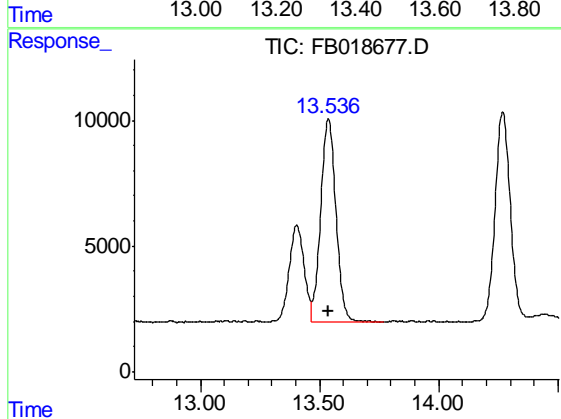
#6 Toluene

R.T.: 10.955 min
Delta R.T.: 0.001 min
Response: 513642
Conc: 33.97 ng/ml



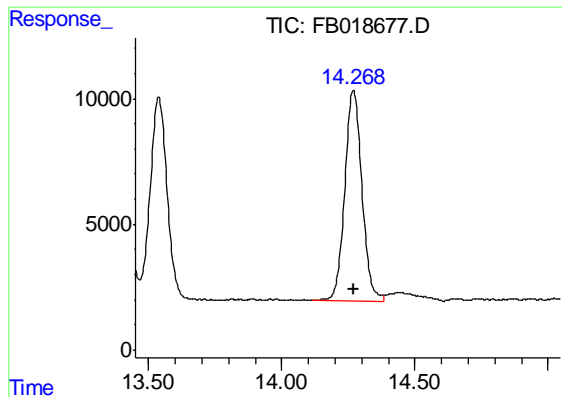
#7 Ethylbenzene

R.T.: 13.405 min
Delta R.T.: 0.002 min
Response: 169903
Conc: 10.89 ng/ml



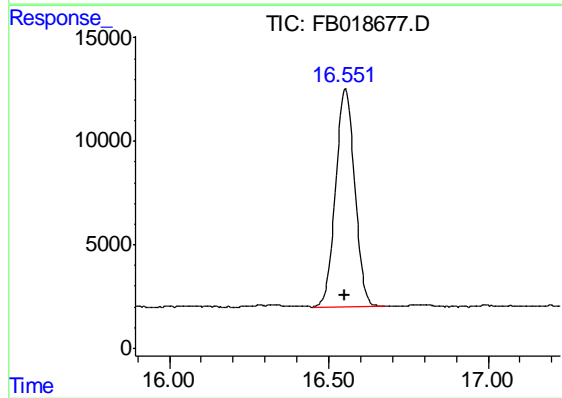
#8 m-Xylene

R.T.: 13.537 min
Delta R.T.: 0.001 min
Response: 361897
Conc: 21.78 ng/ml



#9 O-Xylene

R.T.: 14.269 min
Delta R.T.: 0.001 min
Response: 377519
Conc: 22.00 ng/ml



#10 1,2,4-Trimethylbenzene

R.T.: 16.552 min
Delta R.T.: 0.001 min
Response: 439172
Conc: 22.14 ng/ml