

Data Path : Z:\pestpcbsrv\HPCHEM1\FID_B\Data\FB111120\
 Data File : FB025222.D
 Signal(s) : FID2B.CH
 Acq On : 11 Nov 2020 17:32
 Operator : DD/AJ
 Sample : L4680-01
 Misc : 5.00g/5.00ml DI WATER
 ALS Vial : 7 Sample Multiplier: 1

Integration File: Calibration.e
 Quant Time: Nov 12 00:18:29 2020
 Quant Method : Z:\pestpcbsrv\HPCHEM1\FID_B\Method\FB110320.M
 Quant Title :
 QLast Update : Wed Nov 04 08:05:53 2020
 Response via : Initial Calibration
 Integrator: ChemStation

Volume Inj. : 5 g/ml
 Signal Phase : RTX-502.2
 Signal Info : 60mx0.53mmx3.00um

Compound	R.T.	Response	Conc Units

System Monitoring Compounds			
5) s AAA-TFT	8.803	399061	17.674 ng/ml
Target Compounds			
10) t 1,2,4-Trimethylbenzene	16.221	16051	0.583 ng/ml

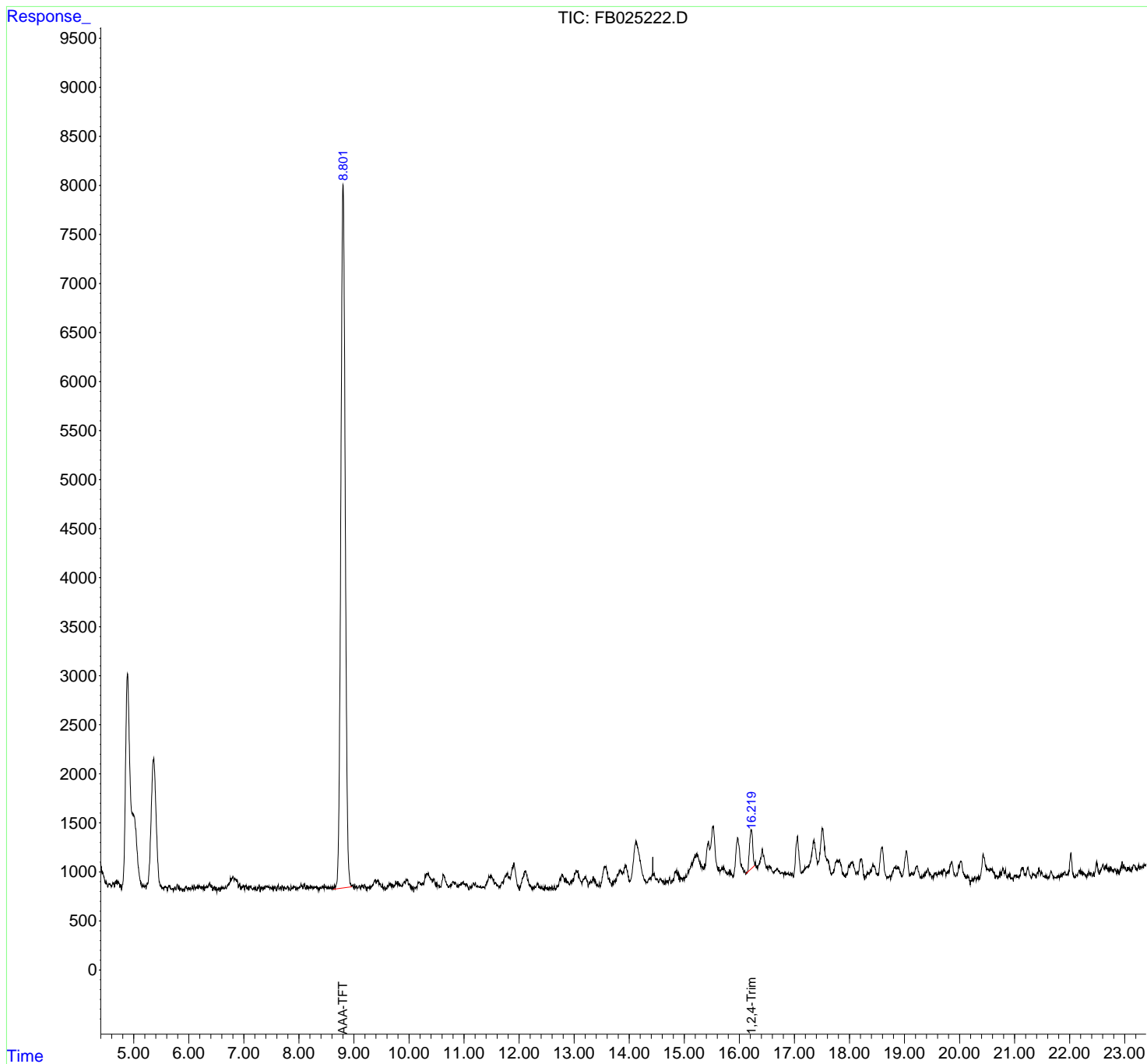
(f)=RT Delta > 1/2 Window

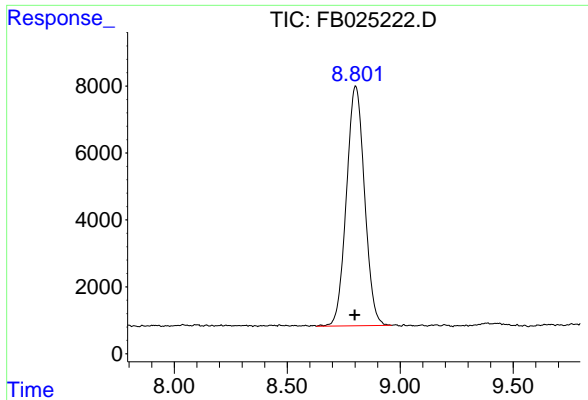
(m)=manual int.

Data Path : Z:\pestpcbsrv\HPCHEM1\FID_B\Data\FB111120\
Data File : FB025222.D
Signal(s) : FID2B.CH
Acq On : 11 Nov 2020 17:32
Operator : DD/AJ
Sample : L4680-01
Misc : 5.00g/5.00ml DI WATER
ALS Vial : 7 Sample Multiplier: 1

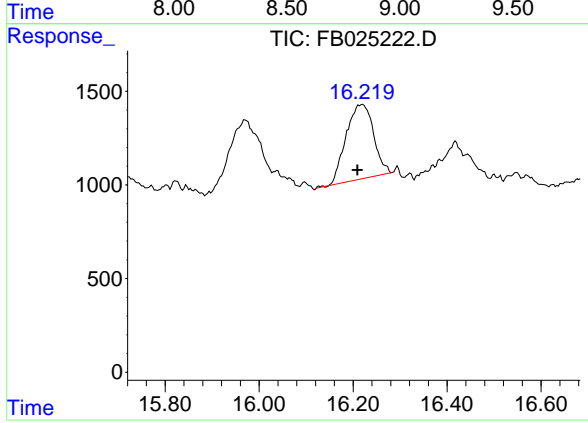
Integration File: Calibration.e
Quant Time: Nov 12 00:18:29 2020
Quant Method : Z:\pestpcbsrv\HPCHEM1\FID_B\Method\FB110320.M
Quant Title :
QLast Update : Wed Nov 04 08:05:53 2020
Response via : Initial Calibration
Integrator: ChemStation

Volume Inj. : 5 g/ml
Signal Phase : RTX-502.2
Signal Info : 60mx0.53mmx3.00um





#5 AAA-TFT
R.T.: 8.803 min
Delta R.T.: 0.004 min
Response: 399061
Conc: 17.67 ng/ml



#10 1,2,4-Trimethylbenzene
R.T.: 16.221 min
Delta R.T.: 0.012 min
Response: 16051
Conc: 0.58 ng/ml