

Data Path : Z:\pestpcbsrv\HPCHEM1\FID\_B\Data\FB111320\  
 Data File : FB025247.D  
 Signal(s) : FID2B.CH  
 Acq On : 13 Nov 2020 12:35  
 Operator : DD/AJ  
 Sample : L4680-05MS  
 Misc : 5.08g/5.00ml DI WATER  
 ALS Vial : 7 Sample Multiplier: 1

Integration File: Calibration.e  
 Quant Time: Nov 16 09:30:56 2020  
 Quant Method : Z:\pestpcbsrv\HPCHEM1\FID\_B\Method\FB110320.M  
 Quant Title :  
 QLast Update : Wed Nov 04 08:05:53 2020  
 Response via : Initial Calibration  
 Integrator: ChemStation

Volume Inj. : 5 g/ml  
 Signal Phase : RTX-502.2  
 Signal Info : 60mx0.53mmx3.00um

Compound	R.T.	Response	Conc Units
-----			
System Monitoring Compounds			
5) s AAA-TFT	8.801	290367	12.860 ng/ml
Target Compounds			
1) t 2-Methylpentane	4.695	559675	17.339 ng/ml
2) t 2,2,4-Trimethylpentane	7.419	566331	17.069 ng/ml
3) t n-Heptane	7.761	174869	5.324 ng/ml
4) t Benzene	7.894	232977	5.860 ng/ml
6) t Toluene	10.632	640876	17.140 ng/ml
7) t Ethylbenzene	13.073	194725	5.670 ng/ml
8) t m-Xylene	13.205	384197	11.379 ng/ml
9) t O-Xylene	13.932	366219	11.201 ng/ml
10) t 1,2,4-Trimethylbenzene	16.210	282092	10.252 ng/ml
-----			

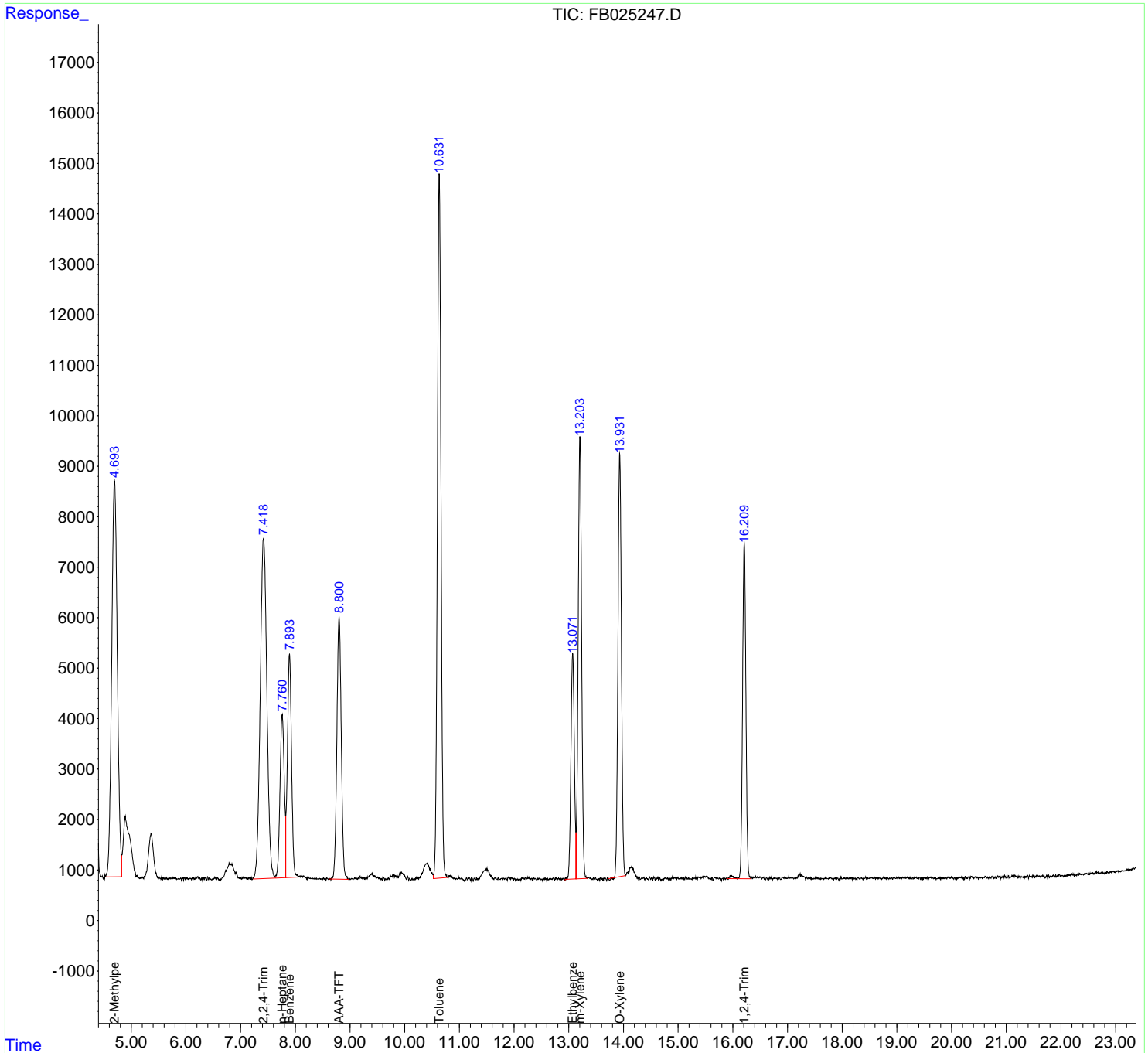
(f)=RT Delta > 1/2 Window

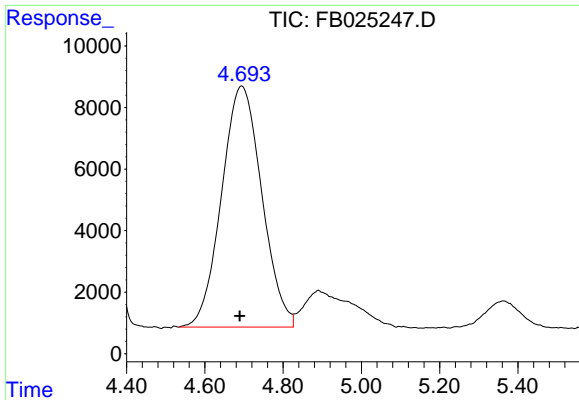
(m)=manual int.

Data Path : Z:\pestpcbsrv\HPCHEM1\FID\_B\Data\FB111320\  
 Data File : FB025247.D  
 Signal(s) : FID2B.CH  
 Acq On : 13 Nov 2020 12:35  
 Operator : DD/AJ  
 Sample : L4680-05MS  
 Misc : 5.08g/5.00ml DI WATER  
 ALS Vial : 7 Sample Multiplier: 1

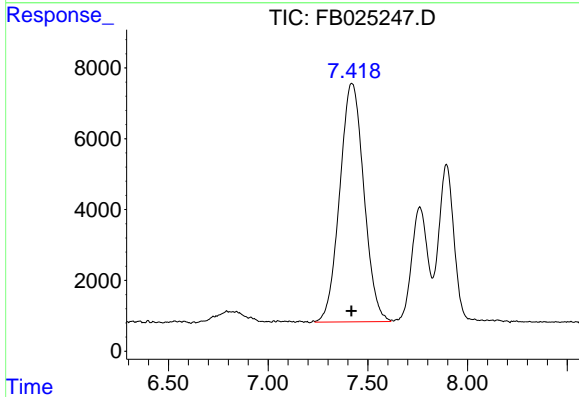
Integration File: Calibration.e  
 Quant Time: Nov 16 09:30:56 2020  
 Quant Method : Z:\pestpcbsrv\HPCHEM1\FID\_B\Method\FB110320.M  
 Quant Title :  
 QLast Update : Wed Nov 04 08:05:53 2020  
 Response via : Initial Calibration  
 Integrator: ChemStation

Volume Inj. : 5 g/ml  
 Signal Phase : RTX-502.2  
 Signal Info : 60mx0.53mmx3.00um

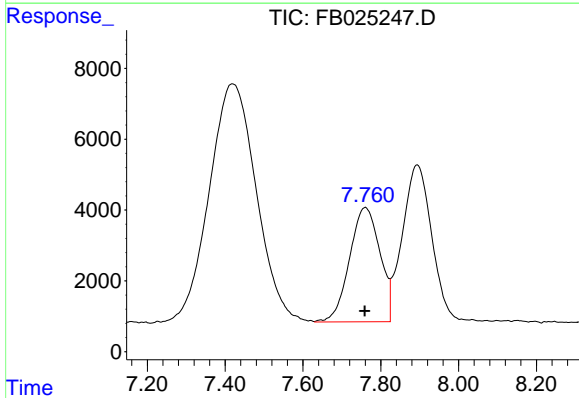




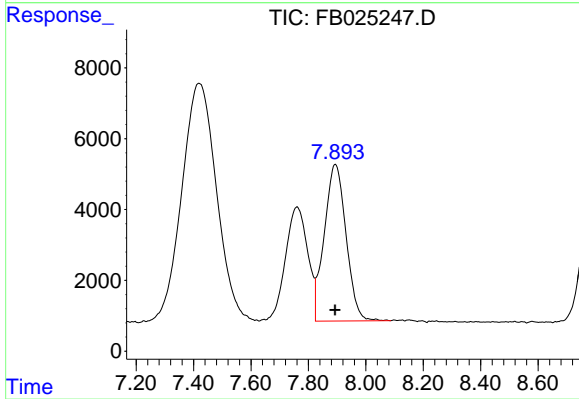
#1 2-Methylpentane  
 R.T.: 4.695 min  
 Delta R.T.: 0.006 min  
 Response: 559675  
 Conc: 17.34 ng/ml



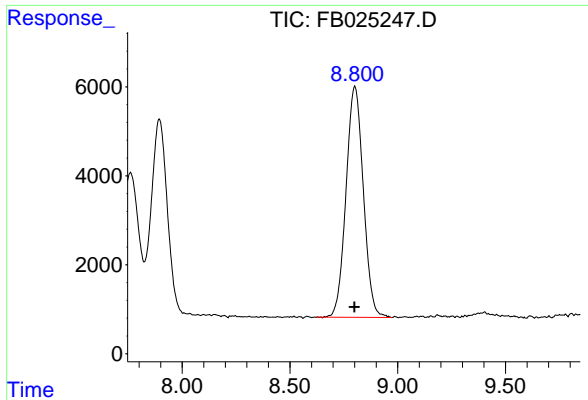
#2 2,2,4-Trimethylpentane  
 R.T.: 7.419 min  
 Delta R.T.: 0.001 min  
 Response: 566331  
 Conc: 17.07 ng/ml



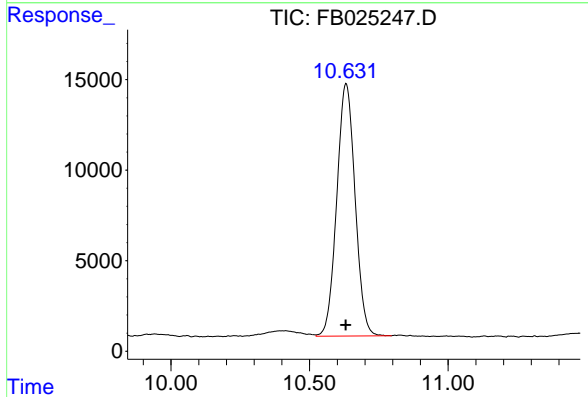
#3 n-Heptane  
 R.T.: 7.761 min  
 Delta R.T.: 0.002 min  
 Response: 174869  
 Conc: 5.32 ng/ml



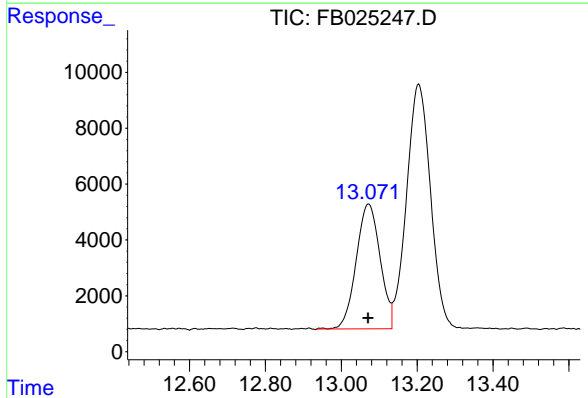
#4 Benzene  
 R.T.: 7.894 min  
 Delta R.T.: 0.000 min  
 Response: 232977  
 Conc: 5.86 ng/ml



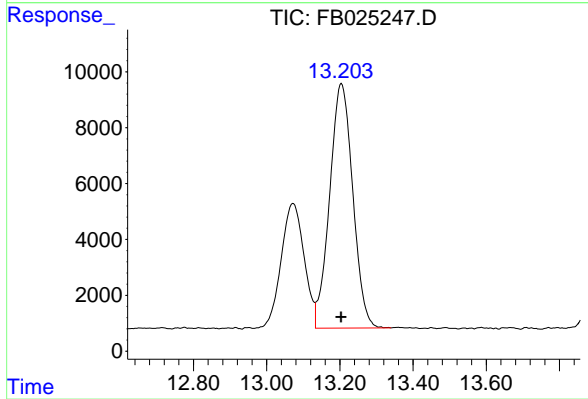
#5 AAA-TFT  
 R.T.: 8.801 min  
 Delta R.T.: 0.002 min  
 Response: 290367  
 Conc: 12.86 ng/ml



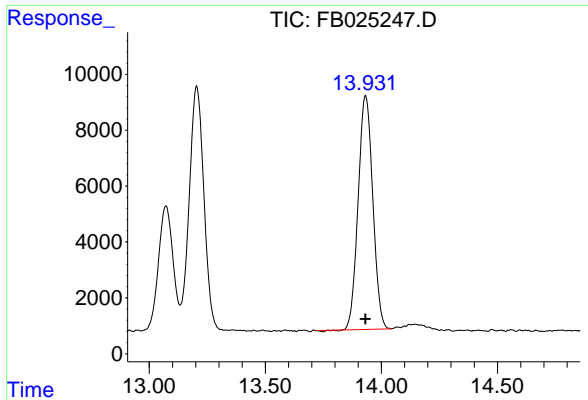
#6 Toluene  
 R.T.: 10.632 min  
 Delta R.T.: 0.002 min  
 Response: 640876  
 Conc: 17.14 ng/ml



#7 Ethylbenzene  
 R.T.: 13.073 min  
 Delta R.T.: 0.002 min  
 Response: 194725  
 Conc: 5.67 ng/ml



#8 m-Xylene  
 R.T.: 13.205 min  
 Delta R.T.: 0.001 min  
 Response: 384197  
 Conc: 11.38 ng/ml



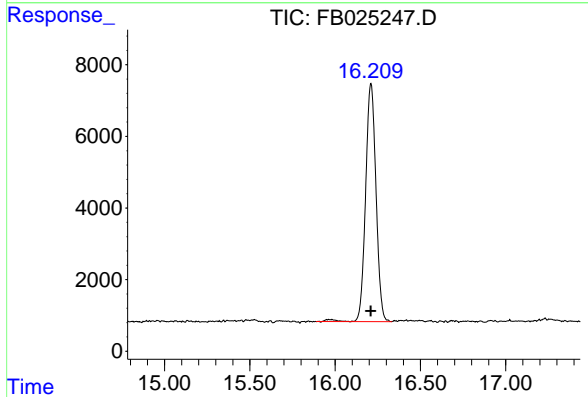
#9 O-Xylene

R.T.: 13.932 min

Delta R.T.: 0.001 min

Response: 366219

Conc: 11.20 ng/ml



#10 1,2,4-Trimethylbenzene

R.T.: 16.210 min

Delta R.T.: 0.001 min

Response: 282092

Conc: 10.25 ng/ml