

Data Path : Z:\pestpcbsrv\HPCHEM1\FID_B\Data\FB111419\
 Data File : FB023001.D
 Signal(s) : FID2B.CH
 Acq On : 14 Nov 2019 22:44
 Operator : DD/AJ
 Sample : 20 PPB GRO STD
 Misc :
 ALS Vial : 21 Sample Multiplier: 1

Integration File: Calibration.e
 Quant Time: Nov 15 01:06:03 2019
 Quant Method : Z:\pestpcbsrv\HPCHEM1\FID_B\Method\FB103119.M
 Quant Title :
 QLast Update : Thu Oct 31 14:57:42 2019
 Response via : Initial Calibration
 Integrator: ChemStation

Volume Inj. : 5 g/ml
 Signal Phase : RTX-502.2
 Signal Info : 60mx0.53mmx3.00um

Compound	R.T.	Response	Conc Units

System Monitoring Compounds			
5) s AAA-TFT	8.796	505742	22.466 ng/ml
Target Compounds			
1) t 2-Methylpentane	4.686	992173	30.844 ng/ml
2) t 2,2,4-Trimethylpentane	7.416	1123156	31.817 ng/ml
3) t n-Heptane	7.754	360302	10.358 ng/ml
4) t Benzene	7.890	458637	10.589 ng/ml
6) t Toluene	10.628	1362373	31.602 ng/ml
7) t Ethylbenzene	13.068	425904	10.668 ng/ml
8) t m-Xylene	13.201	798920	21.154 ng/ml
9) t O-Xylene	13.928	754952	21.182 ng/ml
10) t 1,2,4-Trimethylbenzene	16.207	635695	22.416 ng/ml

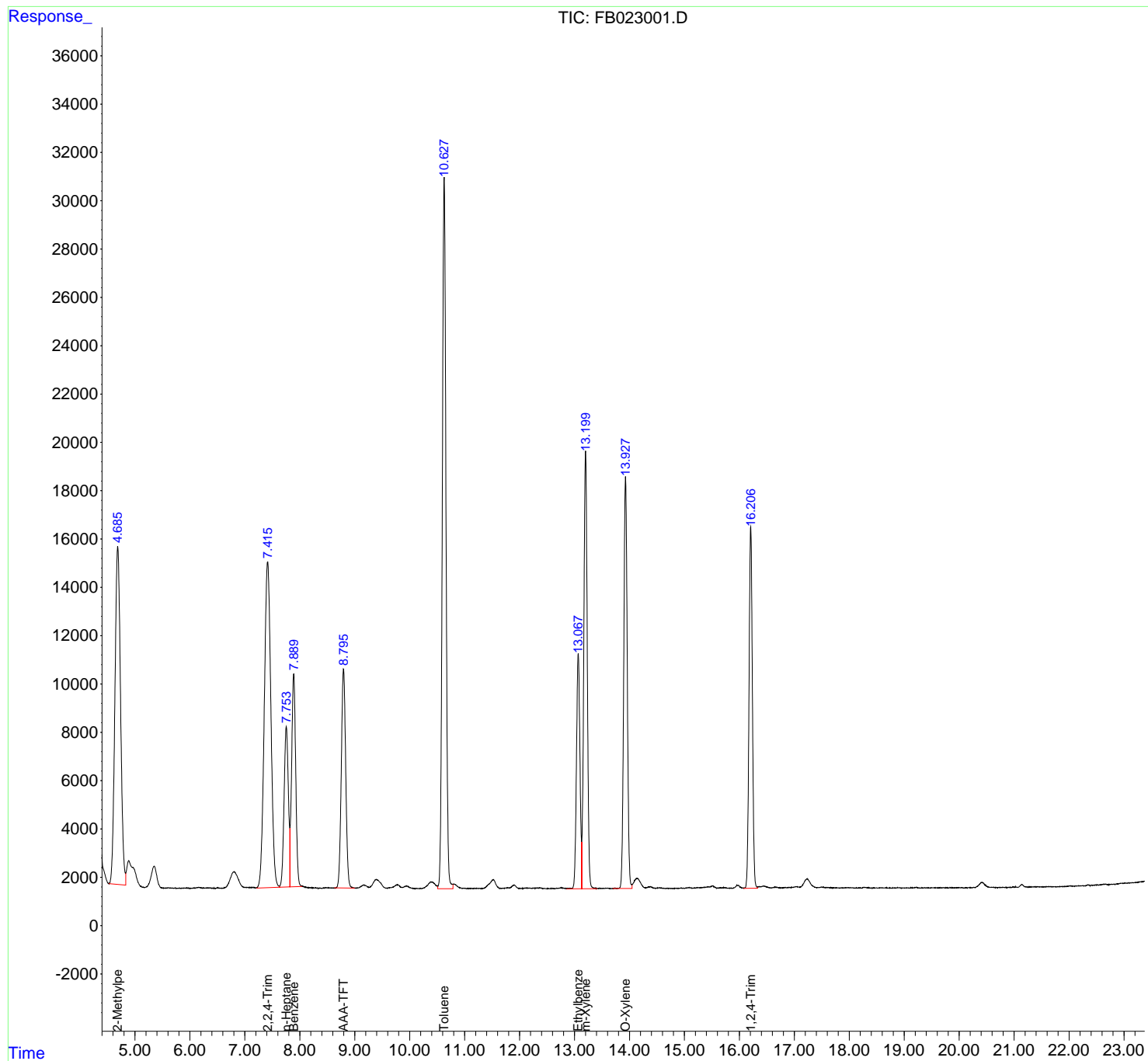
(f)=RT Delta > 1/2 Window

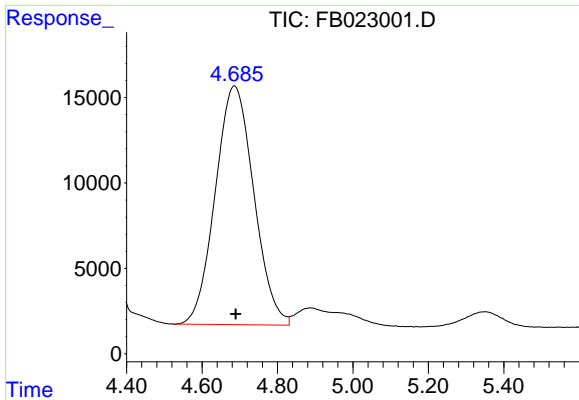
(m)=manual int.

Data Path : Z:\pestpcbsrv\HPCHEM1\FID_B\Data\FB111419\
Data File : FB023001.D
Signal(s) : FID2B.CH
Acq On : 14 Nov 2019 22:44
Operator : DD/AJ
Sample : 20 PPB GRO STD
Misc :
ALS Vial : 21 Sample Multiplier: 1

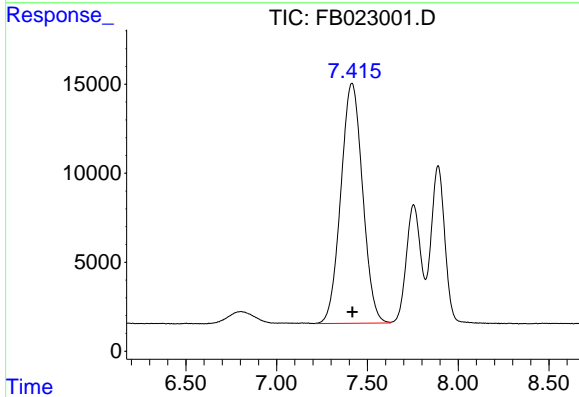
Integration File: Calibration.e
Quant Time: Nov 15 01:06:03 2019
Quant Method : Z:\pestpcbsrv\HPCHEM1\FID_B\Method\FB103119.M
Quant Title :
QLast Update : Thu Oct 31 14:57:42 2019
Response via : Initial Calibration
Integrator: ChemStation

Volume Inj. : 5 g/ml
Signal Phase : RTX-502.2
Signal Info : 60mx0.53mmx3.00um

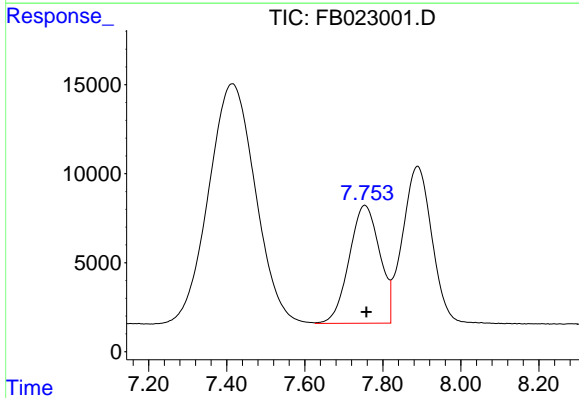




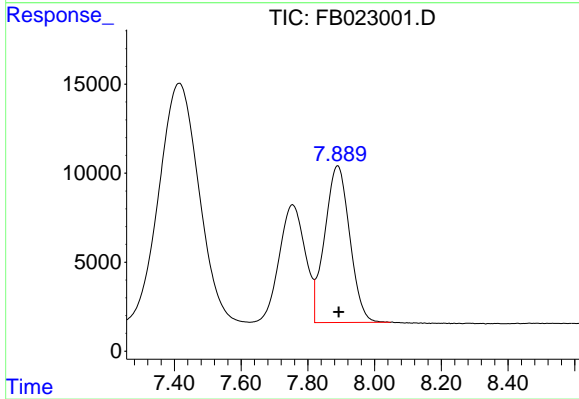
#1 2-Methylpentane
 R.T.: 4.686 min
 Delta R.T.: -0.003 min
 Response: 992173
 Conc: 30.84 ng/ml



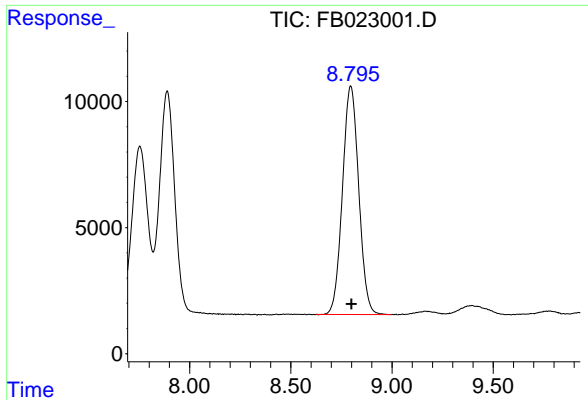
#2 2,2,4-Trimethylpentane
 R.T.: 7.416 min
 Delta R.T.: -0.002 min
 Response: 1123156
 Conc: 31.82 ng/ml



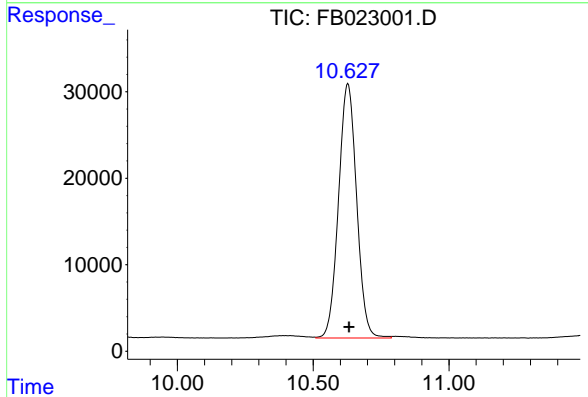
#3 n-Heptane
 R.T.: 7.754 min
 Delta R.T.: -0.004 min
 Response: 360302
 Conc: 10.36 ng/ml



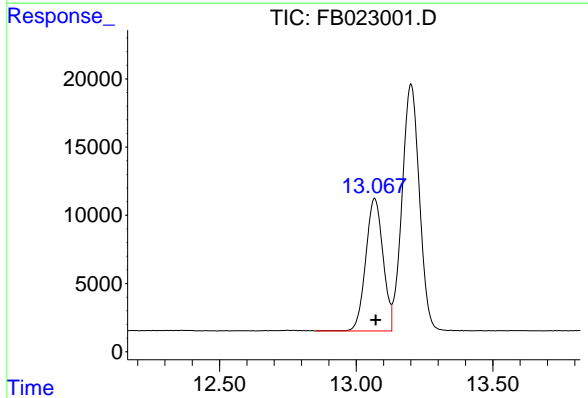
#4 Benzene
 R.T.: 7.890 min
 Delta R.T.: -0.003 min
 Response: 458637
 Conc: 10.59 ng/ml



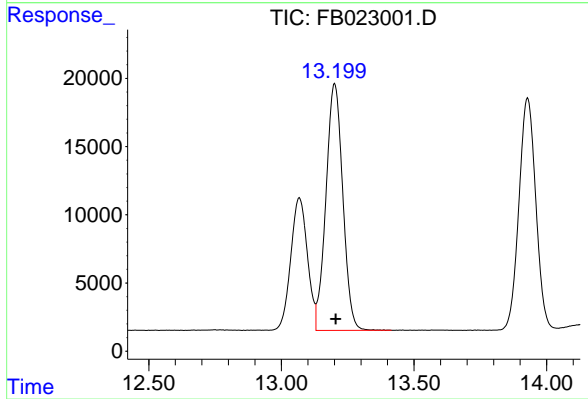
#5 AAA-TFT
 R.T.: 8.796 min
 Delta R.T.: -0.003 min
 Response: 505742
 Conc: 22.47 ng/ml



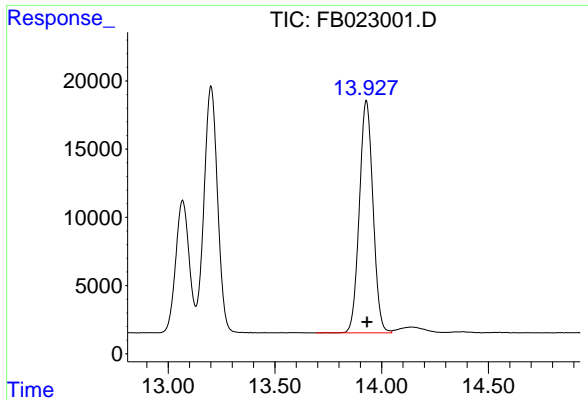
#6 Toluene
 R.T.: 10.628 min
 Delta R.T.: -0.004 min
 Response: 1362373
 Conc: 31.60 ng/ml



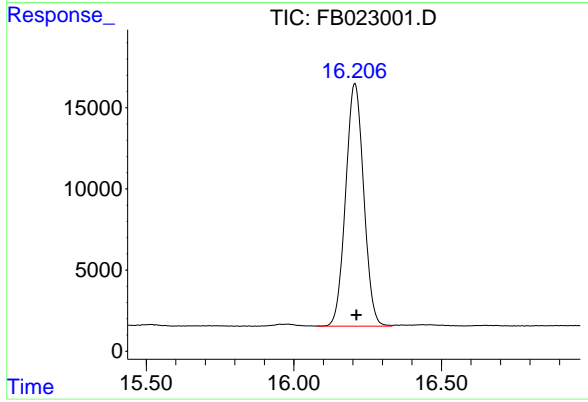
#7 Ethylbenzene
 R.T.: 13.068 min
 Delta R.T.: -0.004 min
 Response: 425904
 Conc: 10.67 ng/ml



#8 m-Xylene
 R.T.: 13.201 min
 Delta R.T.: -0.004 min
 Response: 798920
 Conc: 21.15 ng/ml



#9 O-Xylene
R.T.: 13.928 min
Delta R.T.: -0.004 min
Response: 754952
Conc: 21.18 ng/ml



#10 1,2,4-Trimethylbenzene
R.T.: 16.207 min
Delta R.T.: -0.004 min
Response: 635695
Conc: 22.42 ng/ml