

Data Path : Z:\pestpcbsrv\HPCHEM1\FID\_B\Data\FB111522\  
Data File : FB029033.D  
Signal(s) : FID2B.CH  
Acq On : 15 Nov 2022 19:57  
Operator : AJ/MA  
Sample : N5578-16  
Misc :  
ALS Vial : 17 Sample Multiplier: 1

Instrument :  
FID\_B  
ClientSampleId :  
CAC-HPT-3-GW-(20-23)

Integration File: Calibration.e  
Quant Time: Nov 16 05:28:20 2022  
Quant Method : Z:\pestpcbsrv\HPCHEM1\FID\_B\Method\FB110122.M  
Quant Title :  
QLast Update : Tue Nov 01 12:44:12 2022  
Response via : Initial Calibration  
Integrator: ChemStation

Volume Inj. : 5 g/ml  
Signal Phase : RTX-502.2  
Signal Info : 60mx0.53mmx3.00um

Compound	R.T.	Response	Conc Units
-----			
System Monitoring Compounds			
5) s AAA-TFT	8.787	332334	26.153 ng/ml

Target Compounds

-----

(f)=RT Delta > 1/2 Window

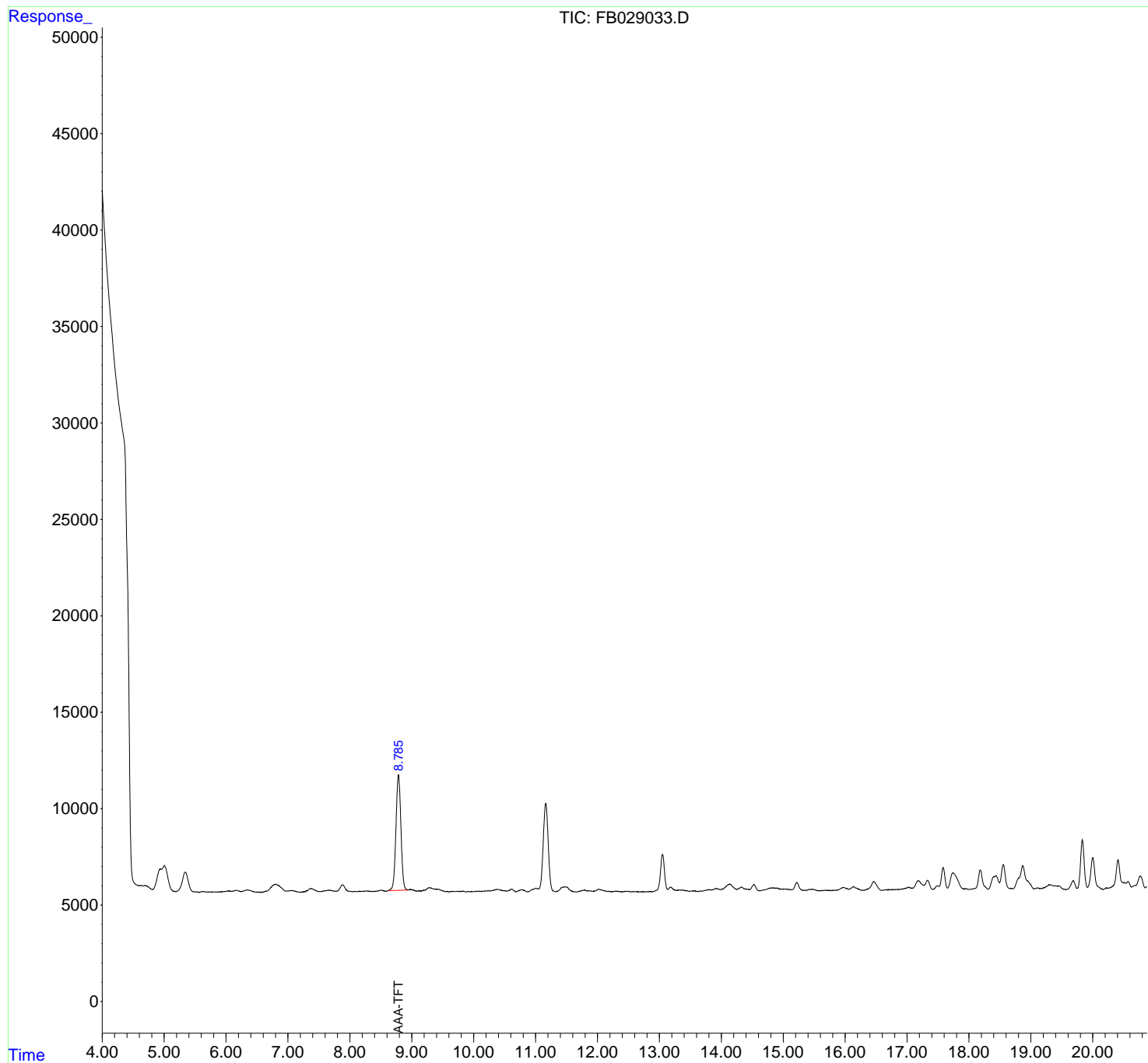
(m)=manual int.

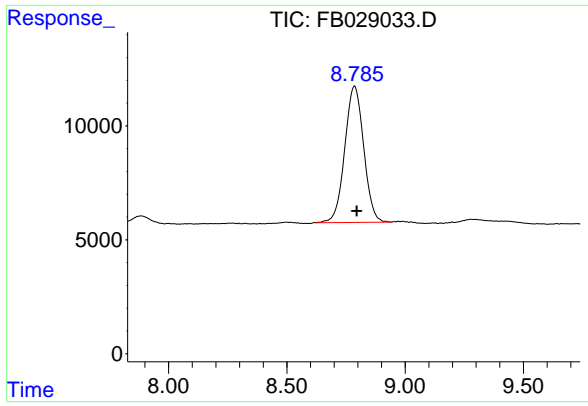
Data Path : Z:\pestpcbsrv\HPCHEM1\FID\_B\Data\FB111522\  
 Data File : FB029033.D  
 Signal(s) : FID2B.CH  
 Acq On : 15 Nov 2022 19:57  
 Operator : AJ/MA  
 Sample : N5578-16  
 Misc :  
 ALS Vial : 17 Sample Multiplier: 1

**Instrument :**  
 FID\_B  
**ClientSampleId :**  
 CAC-HPT-3-GW-(20-23)

Integration File: Calibration.e  
 Quant Time: Nov 16 05:28:20 2022  
 Quant Method : Z:\pestpcbsrv\HPCHEM1\FID\_B\Method\FB110122.M  
 Quant Title :  
 QLast Update : Tue Nov 01 12:44:12 2022  
 Response via : Initial Calibration  
 Integrator: ChemStation

Volume Inj. : 5 g/ml  
 Signal Phase : RTX-502.2  
 Signal Info : 60mx0.53mmx3.00um





#5 AAA-TFT

R.T.: 8.787 min  
Delta R.T.: -0.008 min  
Response: 332334  
Conc: 26.15 ng/ml

Instrument :  
FID\_B  
ClientSampleId :  
CAC-HPT-3-GW-(20-23)