

Data Path : Z:\pestpcbsrv\HPCHEM1\FID_B\Data\FB111524\
 Data File : FB031228.D
 Signal(s) : FID2B.CH
 Acq On : 15 Nov 2024 22:43
 Operator : YP/AJ
 Sample : P4839-10
 Misc : 7.7G/5.00 ML DI WATER
 ALS Vial : 28 Sample Multiplier: 1

Instrument :
 FID_B
 ClientSampleId :

Integration File: Calibration.e
 Quant Time: Nov 18 02:31:50 2024
 Quant Method : Z:\pestpcbsrv\HPCHEM1\FID_B\Method\FB102824.M
 Quant Title :
 QLast Update : Mon Oct 28 12:19:57 2024
 Response via : Initial Calibration
 Integrator: ChemStation

Volume Inj. : 5 g/ml
 Signal Phase : RTX-502.2
 Signal Info : 60mx0.53mmx3.00um

Compound	R.T.	Response	Conc Units

System Monitoring Compounds			
Target Compounds			
10) t 1,2,4-Trimethylbenzene	16.204	7155	0.192 ng/ml

(f)=RT Delta > 1/2 Window

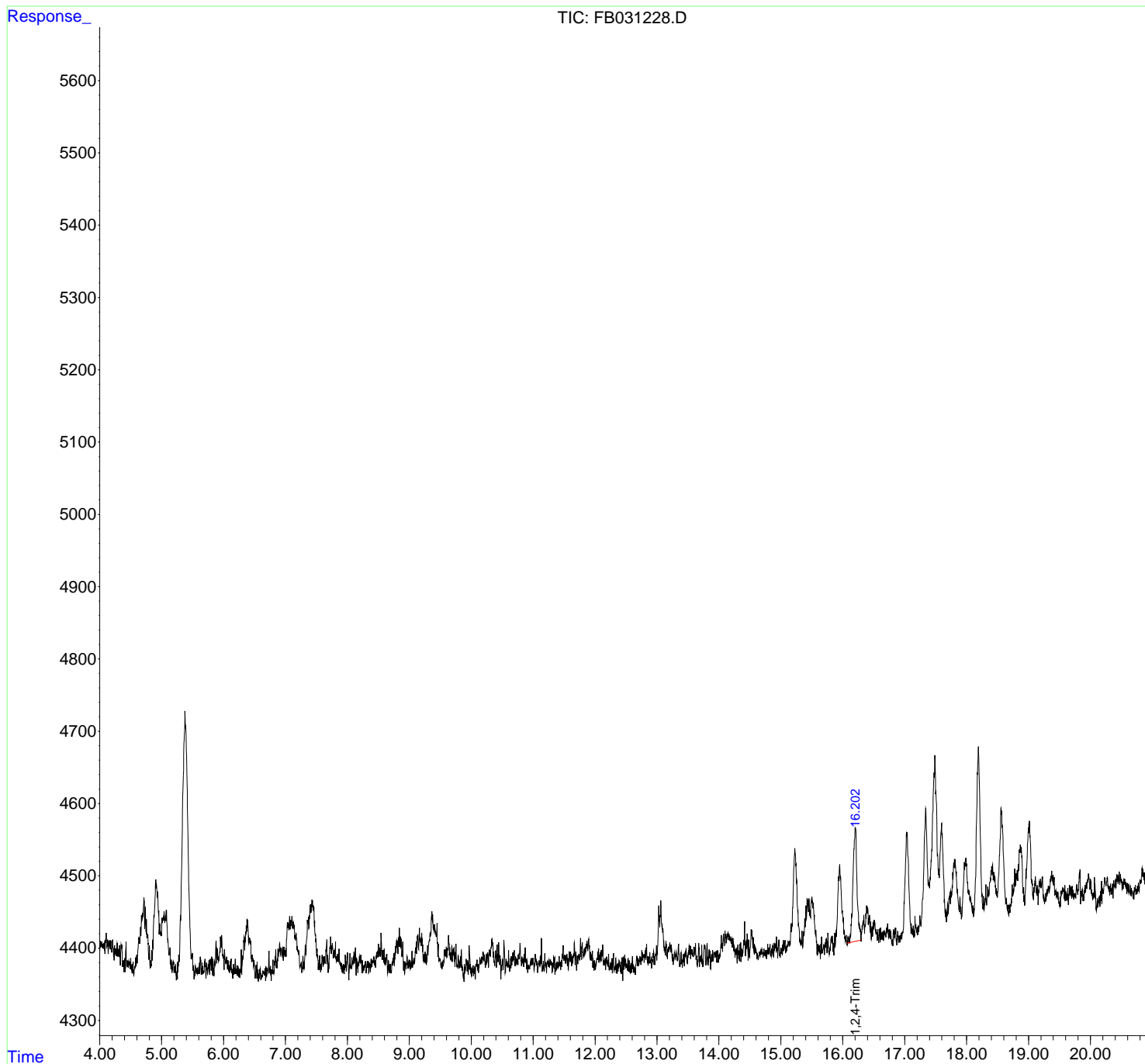
(m)=manual int.

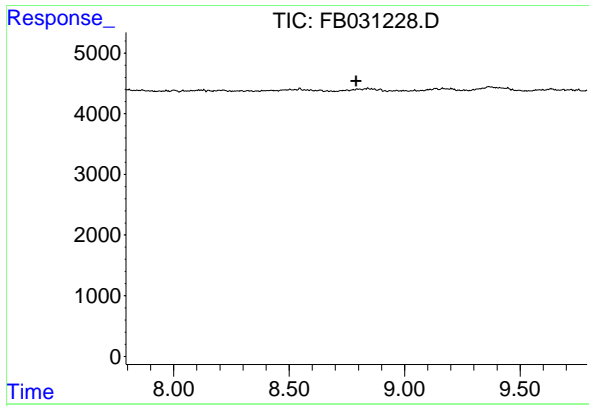
Data Path : Z:\pestpcbsrv\HPCHEM1\FID_B\Data\FB111524\
Data File : FB031228.D
Signal(s) : FID2B.CH
Acq On : 15 Nov 2024 22:43
Operator : YP/AJ
Sample : P4839-10
Misc : 7.7G/5.00 ML DI WATER
ALS Vial : 28 Sample Multiplier: 1

Instrument :
FID_B
ClientSampleId :

Integration File: Calibration.e
Quant Time: Nov 18 02:31:50 2024
Quant Method : Z:\pestpcbsrv\HPCHEM1\FID_B\Method\FB102824.M
Quant Title :
QLast Update : Mon Oct 28 12:19:57 2024
Response via : Initial Calibration
Integrator: ChemStation

Volume Inj. : 5 g/ml
Signal Phase : RTX-502.2
Signal Info : 60mx0.53mmx3.00um

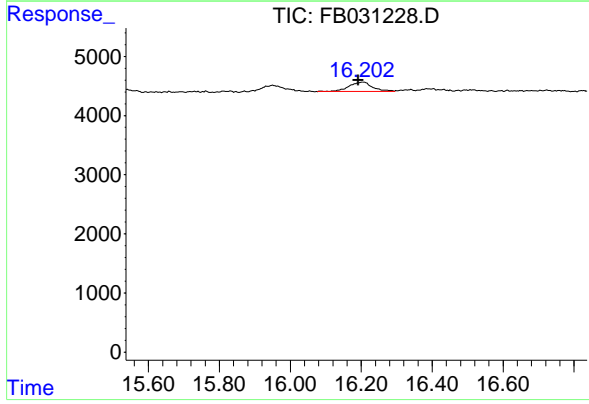




#5 AAA-TFT

R.T.: 0.000 min
 Exp R.T.: 8.791 min
 Response: 0
 Conc: N.D.

Instrument : FID_B
 ClientSampleId :



#10 1,2,4-Trimethylbenzene

R.T.: 16.204 min
 Delta R.T.: 0.012 min
 Response: 7155
 Conc: 0.19 ng/ml