

Data Path : Z:\pestpcbsrv\HPCHEM1\FID_B\Data\FB112818\
 Data File : FB018878.D
 Signal(s) : FID2B.CH
 Acq On : 28 Nov 2018 8:14
 Operator : MJ/SJ
 Sample : 20 PPB GRO STD
 Misc :
 ALS Vial : 1 Sample Multiplier: 1

Integration File: Calibration.e
 Quant Time: Nov 29 02:40:54 2018
 Quant Method : Z:\pestpcbsrv\HPCHEM1\FID_B\Method\FB110918.M
 Quant Title :
 QLast Update : Fri Nov 09 10:53:13 2018
 Response via : Initial Calibration
 Integrator: ChemStation

Volume Inj. : 5 g/ml
 Signal Phase : RTX-502.2
 Signal Info : 60mx0.53mmx3.00um

Compound	R.T.	Response	Conc Units

System Monitoring Compounds			
5) s AAA-TFT	9.108	179601	20.821 ng/ml
Target Compounds			
1) t 2-Methylpentane	4.958	450248	30.785 ng/ml
2) t 2,2,4-Trimethylpentane	7.723	451760	30.798 ng/ml
3) t n-Heptane	8.063	164604	11.411 ng/ml
4) t Benzene	8.201	196196	10.829 ng/ml
6) t Toluene	10.958	476738	31.526 ng/ml
7) t Ethylbenzene	13.408	156150	10.013 ng/ml
8) t m-Xylene	13.541	339535	20.438 ng/ml
9) t O-Xylene	14.273	346714	20.209 ng/ml
10) t 1,2,4-Trimethylbenzene	16.557	415697	20.956 ng/ml

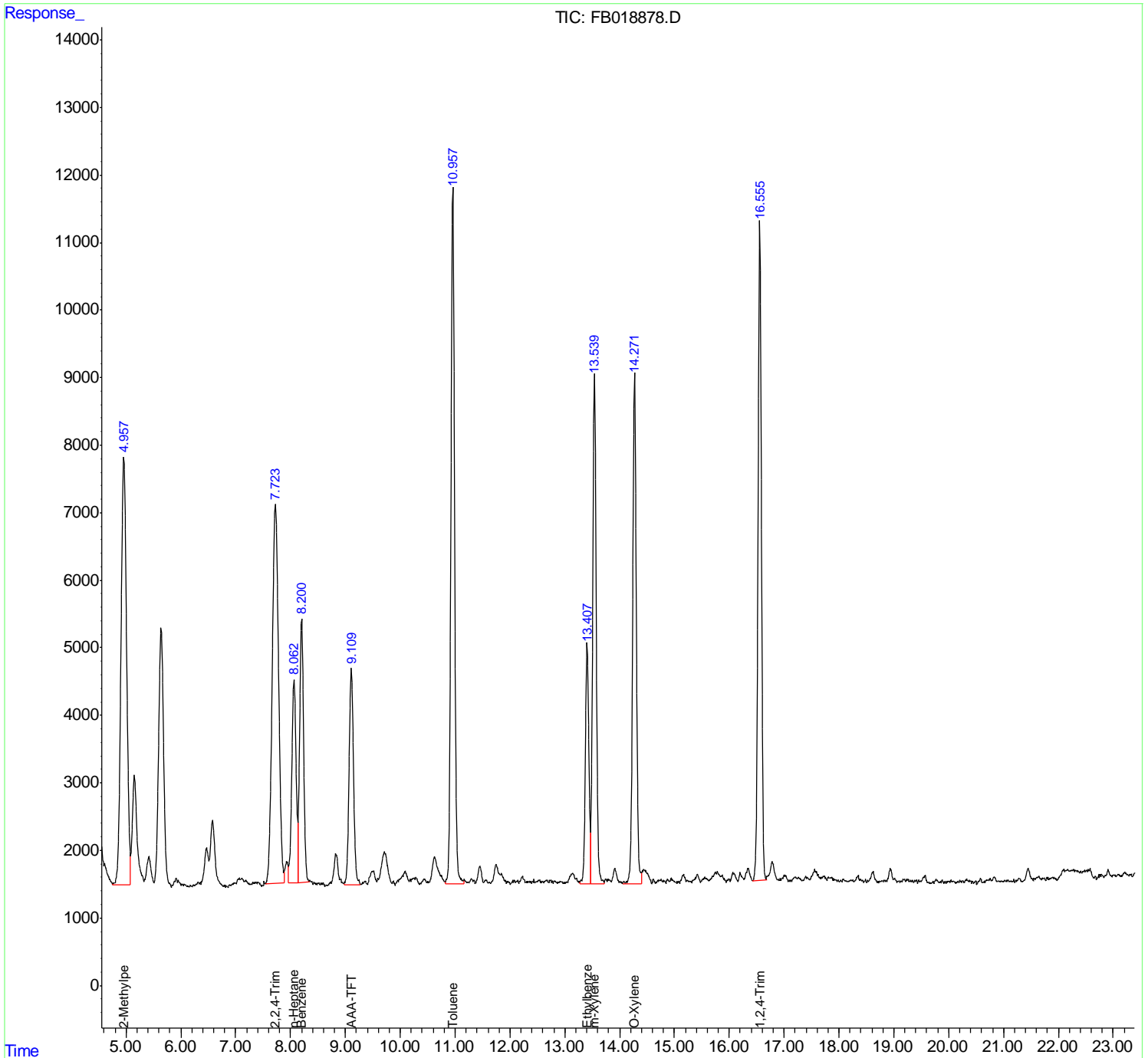
(f)=RT Delta > 1/2 Window

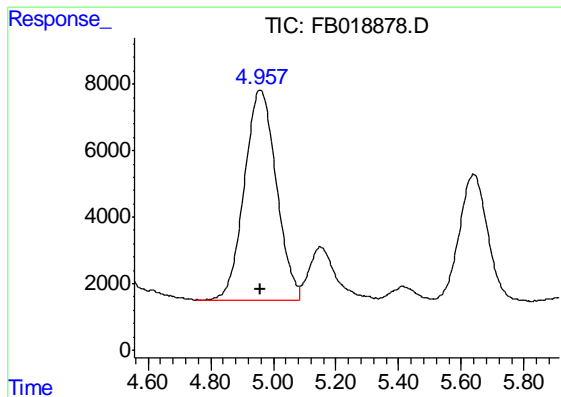
(m)=manual int.

Data Path : Z:\pestpcbsrv\HPCHEM1\FID_B\Data\FB112818\
 Data File : FB018878.D
 Signal(s) : FID2B.CH
 Acq On : 28 Nov 2018 8:14
 Operator : MJ/SJ
 Sample : 20 PPB GRO STD
 Misc :
 ALS Vial : 1 Sample Multiplier: 1

Integration File: Calibration.e
 Quant Time: Nov 29 02:40:54 2018
 Quant Method : Z:\pestpcbsrv\HPCHEM1\FID_B\Method\FB110918.M
 Quant Title :
 QLast Update : Fri Nov 09 10:53:13 2018
 Response via : Initial Calibration
 Integrator: ChemStation

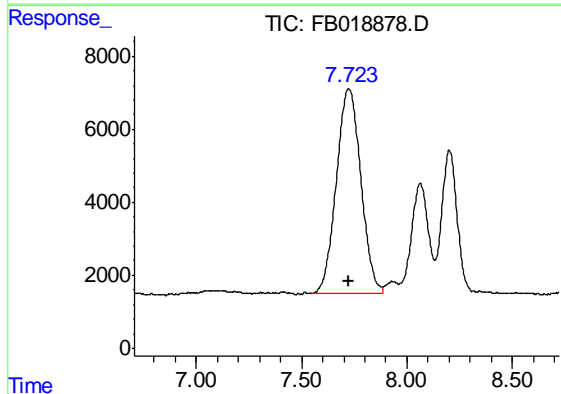
Volume Inj. : 5 g/ml
 Signal Phase : RTX-502.2
 Signal Info : 60mx0.53mmx3.00um





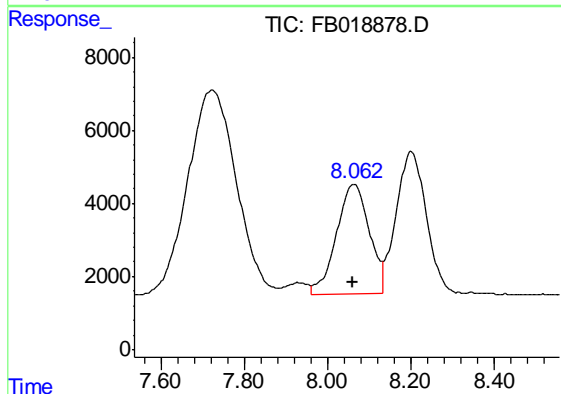
#1 2-Methylpentane

R.T.: 4.958 min
Delta R.T.: -0.002 min
Response: 450248
Conc: 30.78 ng/ml



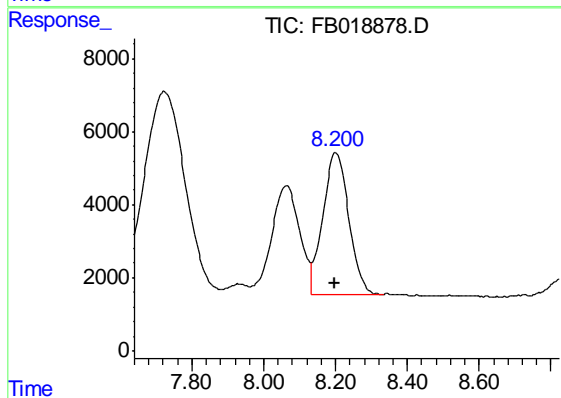
#2 2,2,4-Trimethylpentane

R.T.: 7.723 min
Delta R.T.: 0.000 min
Response: 451760
Conc: 30.80 ng/ml



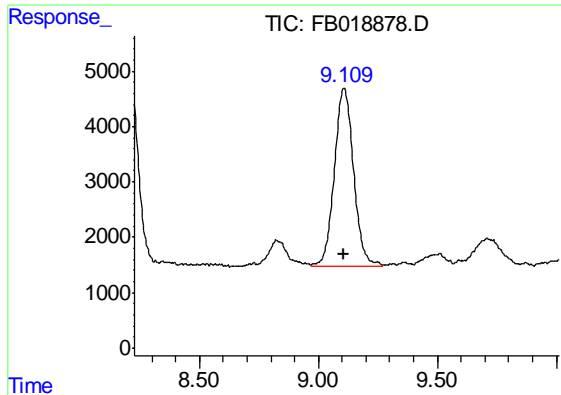
#3 n-Heptane

R.T.: 8.063 min
Delta R.T.: 0.002 min
Response: 164604
Conc: 11.41 ng/ml



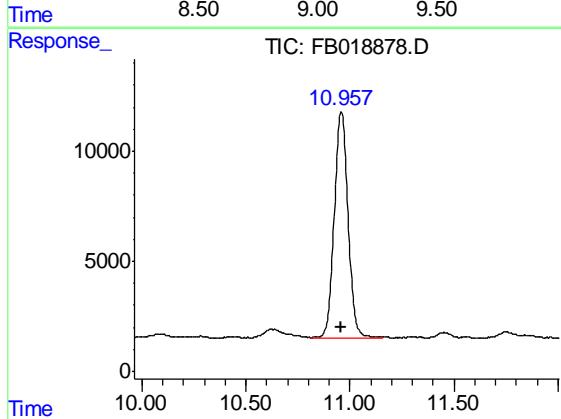
#4 Benzene

R.T.: 8.201 min
Delta R.T.: 0.002 min
Response: 196196
Conc: 10.83 ng/ml



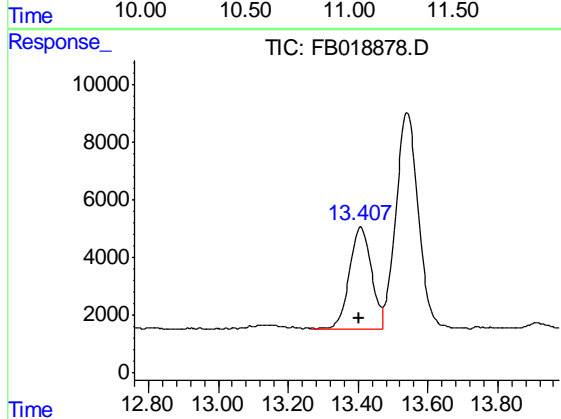
#5 AAA-TFT

R.T.: 9.108 min
 Delta R.T.: 0.003 min
 Response: 179601
 Conc: 20.82 ng/ml



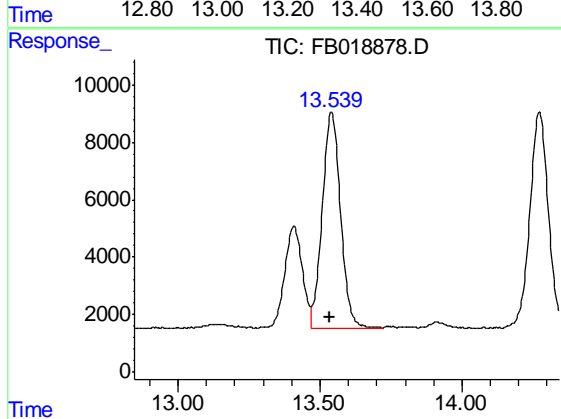
#6 Toluene

R.T.: 10.958 min
 Delta R.T.: 0.004 min
 Response: 476738
 Conc: 31.53 ng/ml



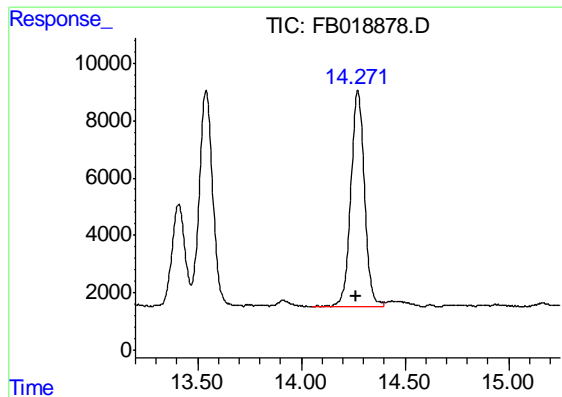
#7 Ethylbenzene

R.T.: 13.408 min
 Delta R.T.: 0.005 min
 Response: 156150
 Conc: 10.01 ng/ml



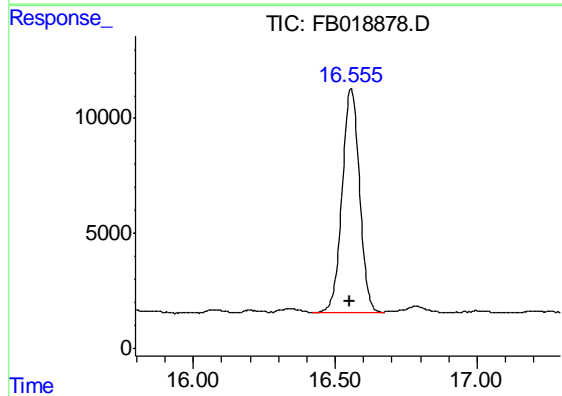
#8 m-Xylene

R.T.: 13.541 min
 Delta R.T.: 0.005 min
 Response: 339535
 Conc: 20.44 ng/ml



#9 O-Xylene

R.T.: 14.273 min
Delta R.T.: 0.005 min
Response: 346714
Conc: 20.21 ng/ml



#10 1,2,4-Trimethylbenzene

R.T.: 16.557 min
Delta R.T.: 0.006 min
Response: 415697
Conc: 20.96 ng/ml