

Data Path : Z:\pestpcbsrv\HPCHEM1\FID_B\Data\FB112818\
 Data File : FB018883.D
 Signal(s) : FID2B.CH
 Acq On : 28 Nov 2018 11:09
 Operator : MJ/SJ
 Sample : J6085-02MSD
 Misc : 5.01g/5.00ml DI WATER
 ALS Vial : 6 Sample Multiplier: 1

Integration File: Calibration.e
 Quant Time: Nov 29 02:41:45 2018
 Quant Method : Z:\pestpcbsrv\HPCHEM1\FID_B\Method\FB110918.M
 Quant Title :
 QLast Update : Fri Nov 09 10:53:13 2018
 Response via : Initial Calibration
 Integrator: ChemStation

Volume Inj. : 5 g/ml
 Signal Phase : RTX-502.2
 Signal Info : 60mx0.53mmx3.00um

Compound	R.T.	Response	Conc Units

System Monitoring Compounds			
5) s AAA-TFT	9.113	151795	17.598 ng/ml
Target Compounds			
1) t 2-Methylpentane	4.965	336043	22.976 ng/ml
2) t 2,2,4-Trimethylpentane	7.730	307080	20.935 ng/ml
3) t n-Heptane	8.069	101000	7.002 ng/ml
4) t Benzene	8.207	178580	9.856 ng/ml
6) t Toluene	10.963	425235	28.120 ng/ml
7) t Ethylbenzene	13.412	133821	8.581 ng/ml
8) t m-Xylene	13.545	280708	16.897 ng/ml
9) t O-Xylene	14.278	290391	16.926 ng/ml
10) t 1,2,4-Trimethylbenzene	16.561	328481	16.559 ng/ml

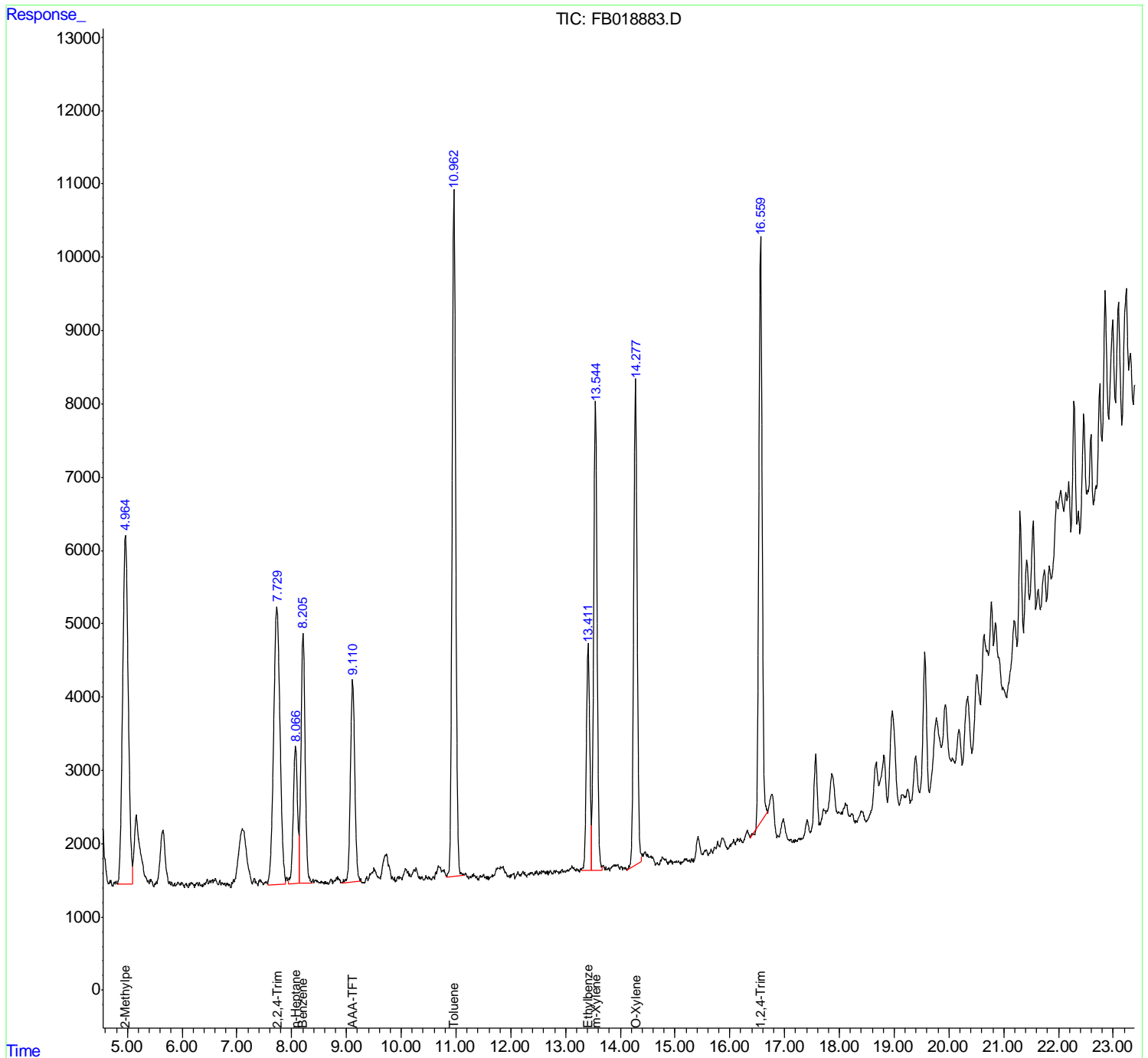
(f)=RT Delta > 1/2 Window

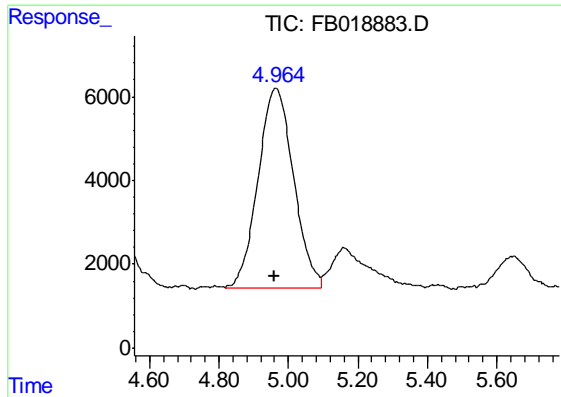
(m)=manual int.

Data Path : Z:\pestpcbsrv\HPCHEM1\FID_B\Data\FB112818\
 Data File : FB018883.D
 Signal(s) : FID2B.CH
 Acq On : 28 Nov 2018 11:09
 Operator : MJ/SJ
 Sample : J6085-02MSD
 Misc : 5.01g/5.00ml DI WATER
 ALS Vial : 6 Sample Multiplier: 1

Integration File: Calibration.e
 Quant Time: Nov 29 02:41:45 2018
 Quant Method : Z:\pestpcbsrv\HPCHEM1\FID_B\Method\FB110918.M
 Quant Title :
 QLast Update : Fri Nov 09 10:53:13 2018
 Response via : Initial Calibration
 Integrator: ChemStation

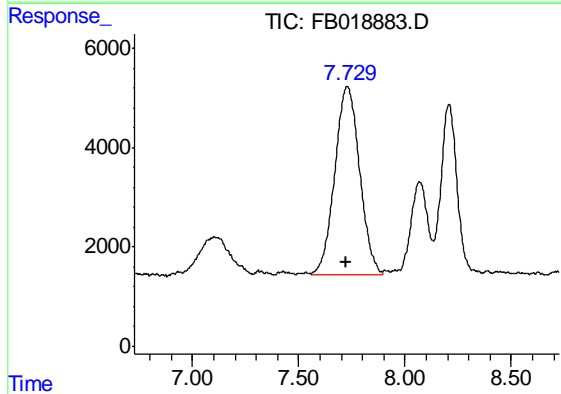
Volume Inj. : 5 g/ml
 Signal Phase : RTX-502.2
 Signal Info : 60mx0.53mmx3.00um





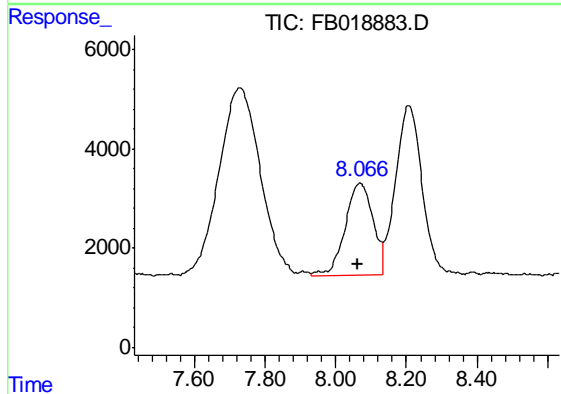
#1 2-Methylpentane

R.T.: 4.965 min
Delta R.T.: 0.005 min
Response: 336043
Conc: 22.98 ng/ml



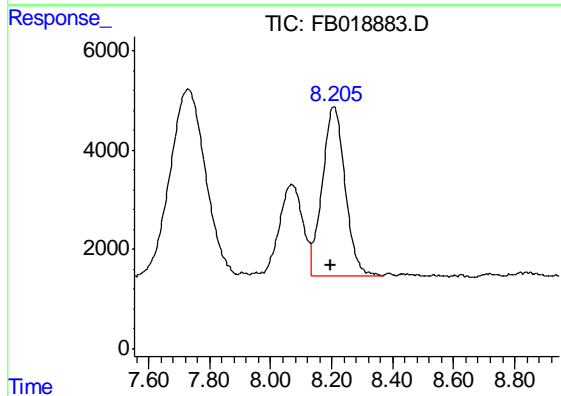
#2 2,2,4-Trimethylpentane

R.T.: 7.730 min
Delta R.T.: 0.007 min
Response: 307080
Conc: 20.93 ng/ml



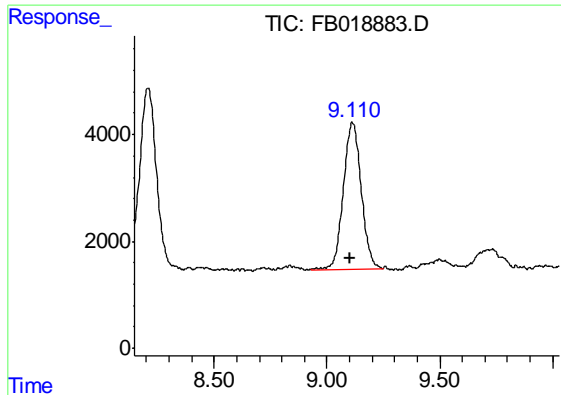
#3 n-Heptane

R.T.: 8.069 min
Delta R.T.: 0.008 min
Response: 101000
Conc: 7.00 ng/ml



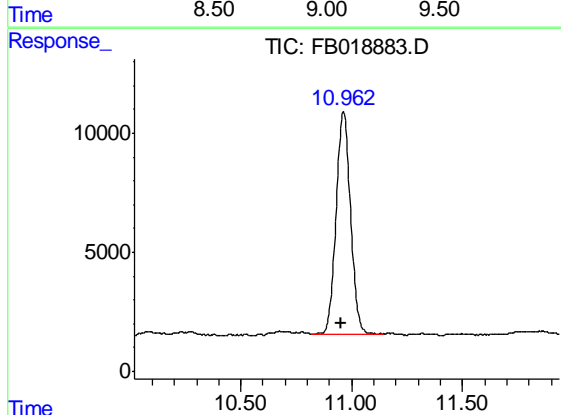
#4 Benzene

R.T.: 8.207 min
Delta R.T.: 0.008 min
Response: 178580
Conc: 9.86 ng/ml



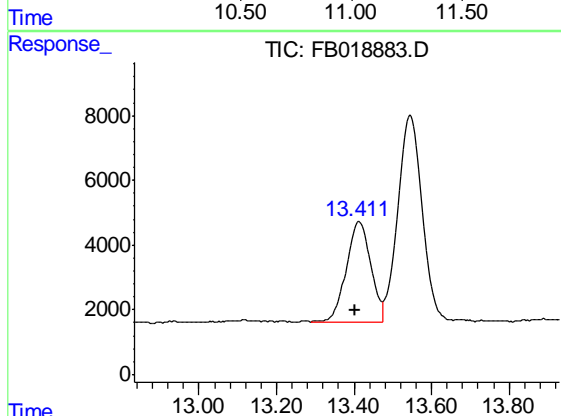
#5 AAA-TFT

R.T.: 9.113 min
Delta R.T.: 0.008 min
Response: 151795
Conc: 17.60 ng/ml



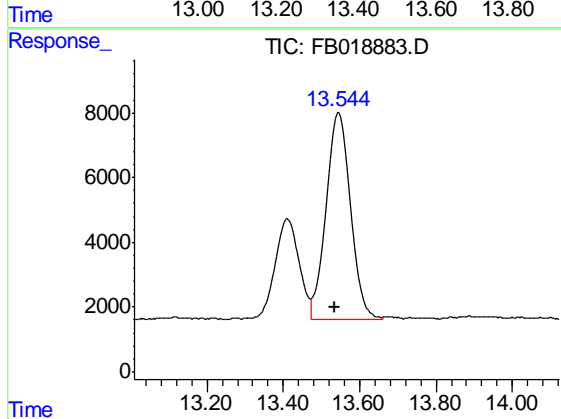
#6 Toluene

R.T.: 10.963 min
Delta R.T.: 0.009 min
Response: 425235
Conc: 28.12 ng/ml



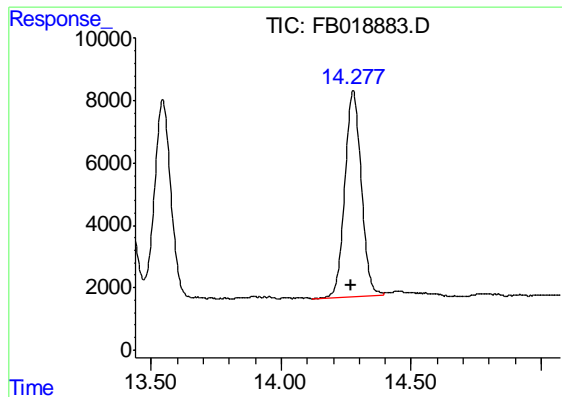
#7 Ethylbenzene

R.T.: 13.412 min
Delta R.T.: 0.009 min
Response: 133821
Conc: 8.58 ng/ml



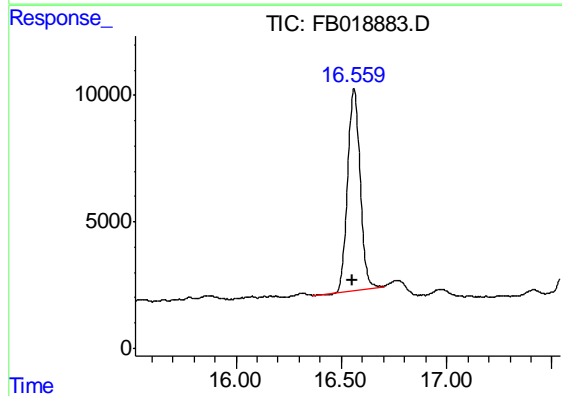
#8 m-Xylene

R.T.: 13.545 min
Delta R.T.: 0.009 min
Response: 280708
Conc: 16.90 ng/ml



#9 O-Xylene

R.T.: 14.278 min
Delta R.T.: 0.010 min
Response: 290391
Conc: 16.93 ng/ml



#10 1,2,4-Trimethylbenzene

R.T.: 16.561 min
Delta R.T.: 0.010 min
Response: 328481
Conc: 16.56 ng/ml