

Data Path : Z:\pestpcbsrv\HPCHEM1\FID_B\Data\FB120120\
Data File : FB025299.D
Signal(s) : FID2B.CH
Acq On : 1 Dec 2020 11:05
Operator : DD/AJ
Sample : L4900-03
Misc : 5.00g/5.00ml DI WATER
ALS Vial : 6 Sample Multiplier: 1

Instrument :
FID_B
ClientSampleId :

Integration File: Calibration.e
Quant Time: Dec 02 00:19:38 2020
Quant Method : Z:\pestpcbsrv\HPCHEM1\FID_B\Method\FB110320.M
Quant Title :
QLast Update : Wed Nov 04 08:05:53 2020
Response via : Initial Calibration
Integrator: ChemStation

Volume Inj. : 5 g/ml
Signal Phase : RTX-502.2
Signal Info : 60mx0.53mmx3.00um

Compound	R.T.	Response	Conc Units

System Monitoring Compounds			
5) s AAA-TFT	8.801	529999	23.473 ng/ml
Target Compounds			

(f)=RT Delta > 1/2 Window

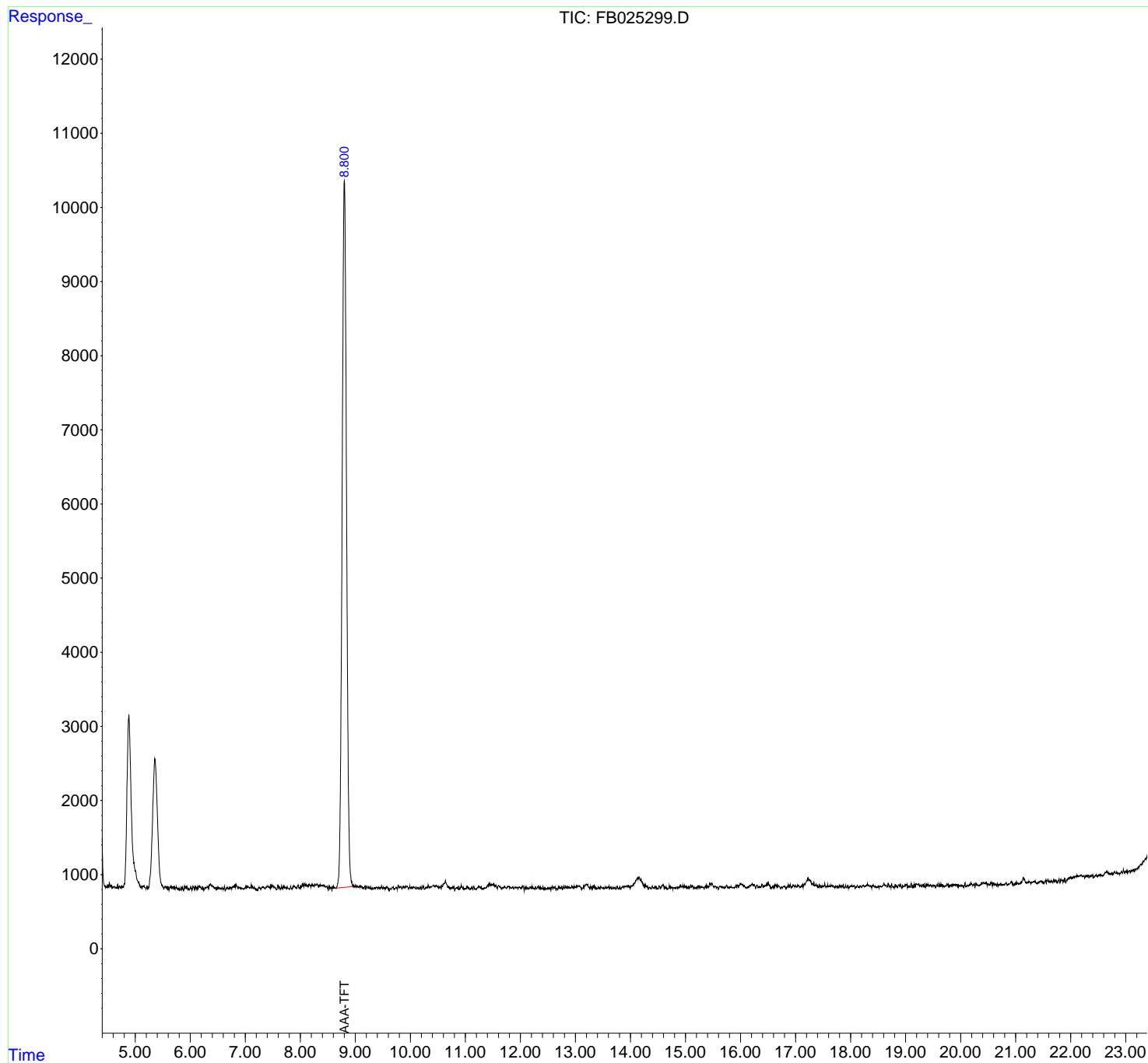
(m)=manual int.

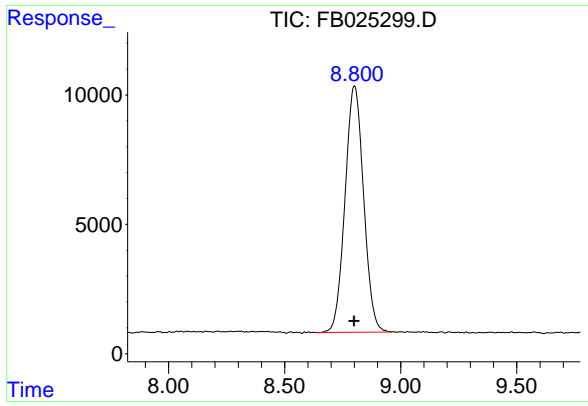
Data Path : Z:\pestpcbsrv\HPCHEM1\FID_B\Data\FB120120\
 Data File : FB025299.D
 Signal(s) : FID2B.CH
 Acq On : 1 Dec 2020 11:05
 Operator : DD/AJ
 Sample : L4900-03
 Misc : 5.00g/5.00ml DI WATER
 ALS Vial : 6 Sample Multiplier: 1

Instrument :
 FID_B
 ClientSampleId :

Integration File: Calibration.e
 Quant Time: Dec 02 00:19:38 2020
 Quant Method : Z:\pestpcbsrv\HPCHEM1\FID_B\Method\FB110320.M
 Quant Title :
 QLast Update : Wed Nov 04 08:05:53 2020
 Response via : Initial Calibration
 Integrator: ChemStation

Volume Inj. : 5 g/ml
 Signal Phase : RTX-502.2
 Signal Info : 60mx0.53mmx3.00um





#5 AAA-TFT

R.T.: 8.801 min
Delta R.T.: 0.002 min
Response: 529999
Conc: 23.47 ng/ml

Instrument :
FID_B
ClientSampleId :