

Data Path : Z:\pestpcbsrv\HPCHEM1\FID\_B\Data\FB121018\  
 Data File : FB019010.D  
 Signal(s) : FID2B.CH  
 Acq On : 11 Dec 2018 5:46  
 Operator : MJ/SJ  
 Sample : J6331-28  
 Misc : 5.05g/5.00ml DI WATER  
 ALS Vial : 27 Sample Multiplier: 1

Instrument :  
 FID\_B  
 ClientSampleId :

Integration File: Calibration.e  
 Quant Time: Dec 11 08:03:36 2018  
 Quant Method : Z:\pestpcbsrv\HPCHEM1\FID\_B\Method\FB120718.M  
 Quant Title :  
 QLast Update : Fri Dec 07 17:57:38 2018  
 Response via : Initial Calibration  
 Integrator: ChemStation

Volume Inj. : 5 g/ml  
 Signal Phase : RTX-502.2  
 Signal Info : 60mx0.53mmx3.00um

Compound	R.T.	Response	Conc Units
-----			
System Monitoring Compounds			
5) s AAA-TFT	9.108	169830	19.430 ng/ml

Target Compounds

(f)=RT Delta > 1/2 Window

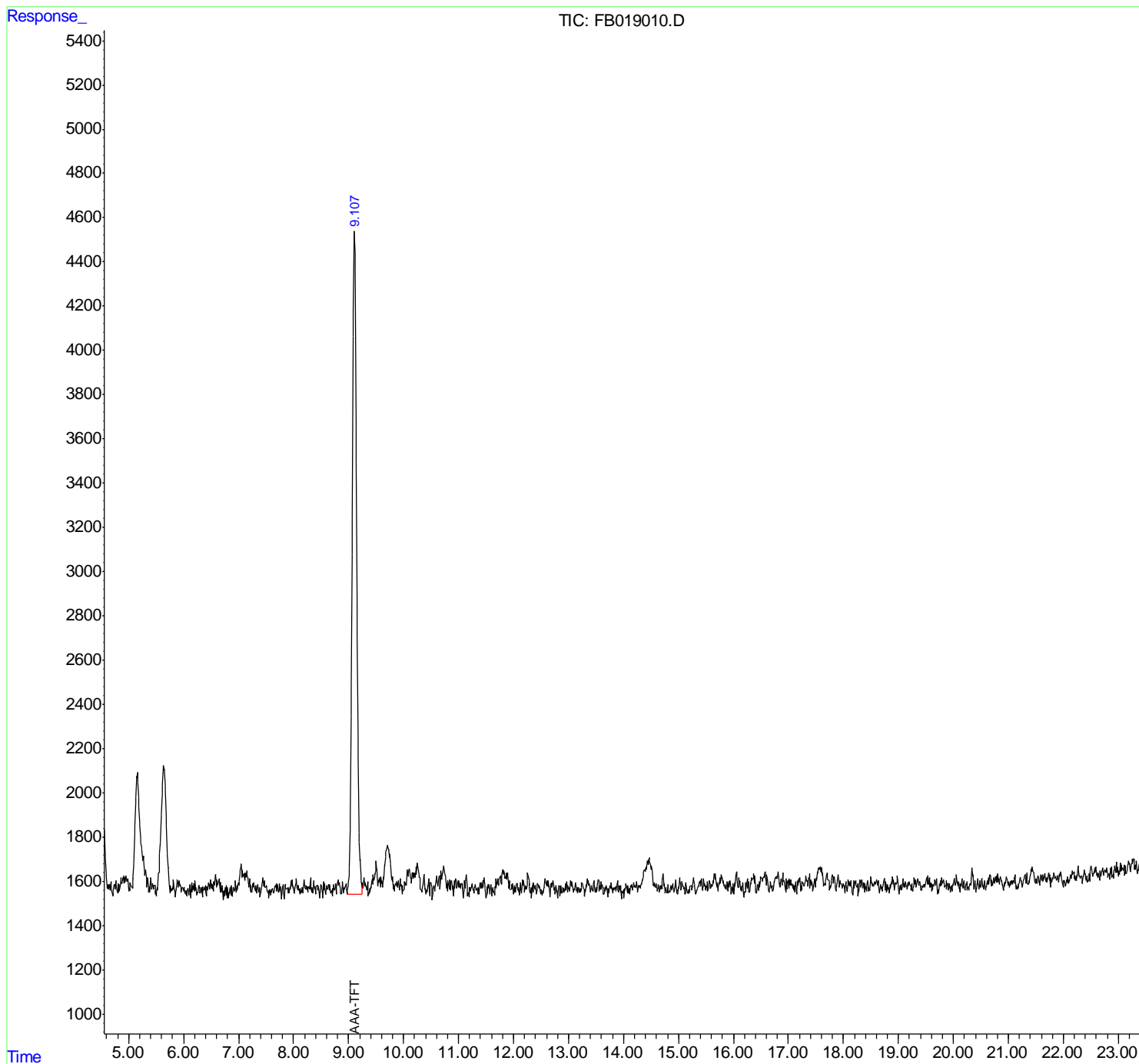
(m)=manual int.

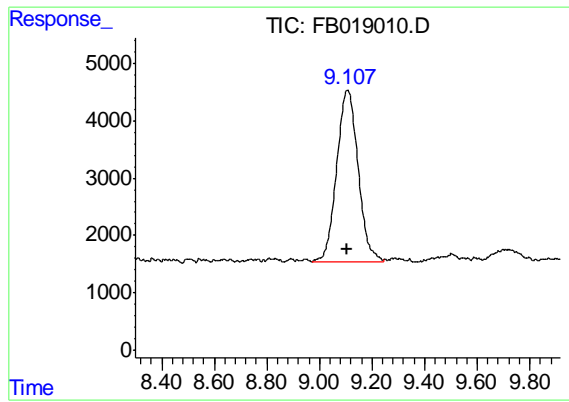
Data Path : Z:\pestpcbsrv\HPCHEM1\FID\_B\Data\FB121018\  
Data File : FB019010.D  
Signal(s) : FID2B.CH  
Acq On : 11 Dec 2018 5:46  
Operator : MJ/SJ  
Sample : J6331-28  
Misc : 5.05g/5.00ml DI WATER  
ALS Vial : 27 Sample Multiplier: 1

Instrument :  
FID\_B  
ClientSampleId :

Integration File: Calibration.e  
Quant Time: Dec 11 08:03:36 2018  
Quant Method : Z:\pestpcbsrv\HPCHEM1\FID\_B\Method\FB120718.M  
Quant Title :  
QLast Update : Fri Dec 07 17:57:38 2018  
Response via : Initial Calibration  
Integrator: ChemStation

Volume Inj. : 5 g/ml  
Signal Phase : RTX-502.2  
Signal Info : 60mx0.53mmx3.00um





#5 AAA-TFT

R.T.: 9.108 min  
Delta R.T.: 0.002 min  
Response: 169830  
Conc: 19.43 ng/ml

Instrument :  
FID\_B  
ClientSampleId :