

Data Path : Z:\pestpcbsrv\HPCHEM1\FID_B\Data\FB121120\
 Data File : FB025332.D
 Signal(s) : FID2B.CH
 Acq On : 11 Dec 2020 10:13
 Operator : DD/AJ
 Sample : 20 PPB GRO STD
 Misc :
 ALS Vial : 1 Sample Multiplier: 1

Instrument :
 FID_B
 ClientSampleId :

Integration File: Calibration.e
 Quant Time: Dec 11 21:57:53 2020
 Quant Method : Z:\pestpcbsrv\HPCHEM1\FID_B\Method\FB120220.M
 Quant Title :
 QLast Update : Wed Dec 02 15:24:25 2020
 Response via : Initial Calibration
 Integrator: ChemStation

Volume Inj. : 5 g/ml
 Signal Phase : RTX-502.2
 Signal Info : 60mx0.53mmx3.00um

Compound	R.T.	Response	Conc Units

System Monitoring Compounds			
5) s AAA-TFT	8.794	414816	19.731 ng/ml
Target Compounds			
1) t 2-Methylpentane	4.684	815975	27.142 ng/ml
2) t 2,2,4-Trimethylpentane	7.412	777644	25.845 ng/ml
3) t n-Heptane	7.752	261844	8.842 ng/ml
4) t Benzene	7.887	350000	9.462 ng/ml
6) t Toluene	10.626	986801	28.082 ng/ml
7) t Ethylbenzene	13.066	297855	9.119 ng/ml
8) t m-Xylene	13.199	596420	18.427 ng/ml
9) t O-Xylene	13.927	576325	18.231 ng/ml
10) t 1,2,4-Trimethylbenzene	16.205	490015	18.045 ng/ml

(f)=RT Delta > 1/2 Window

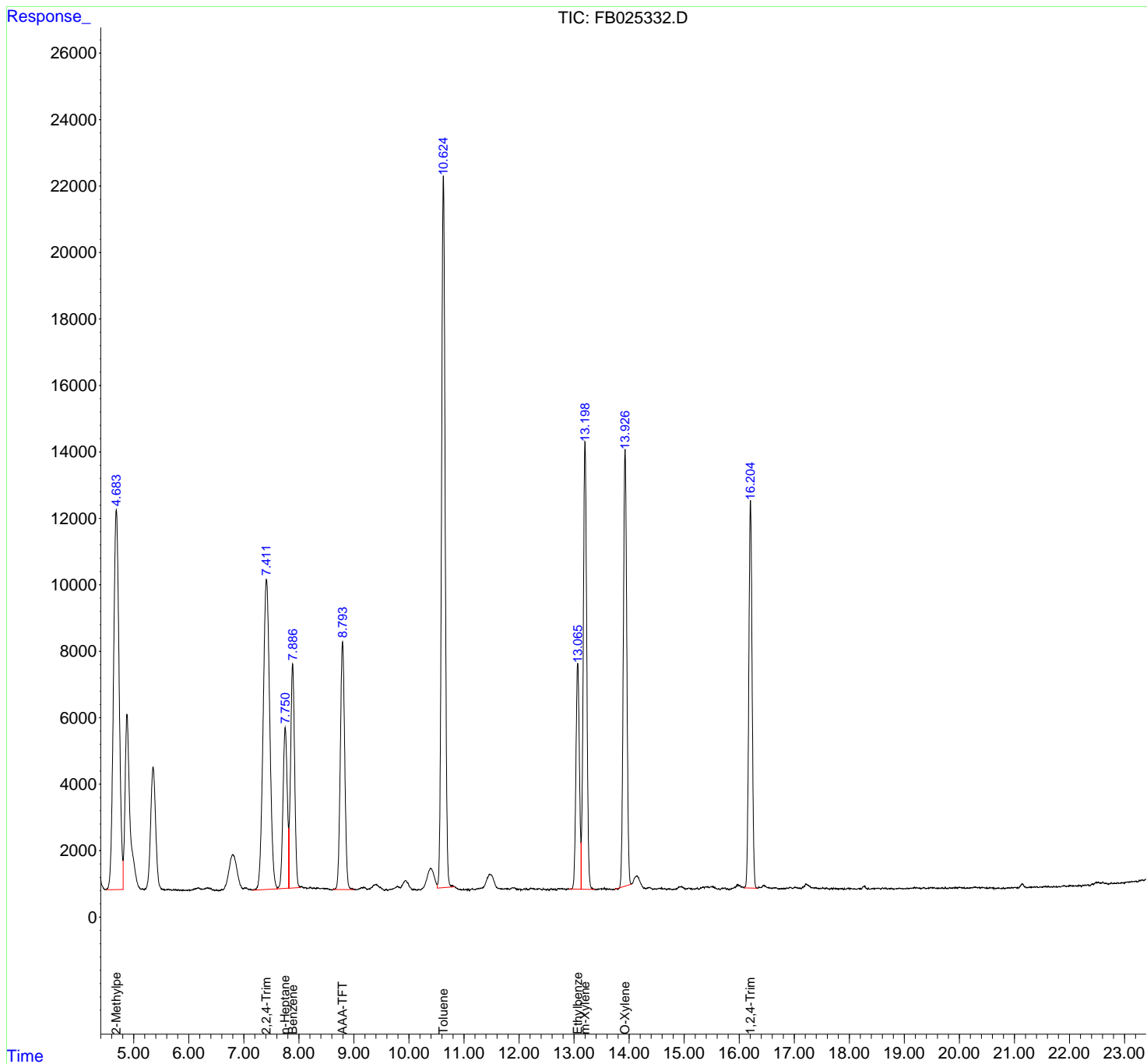
(m)=manual int.

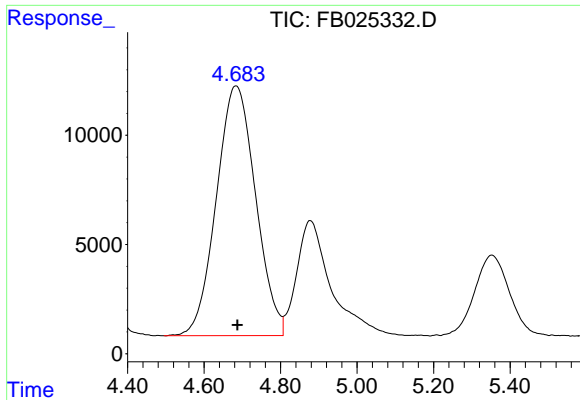
Data Path : Z:\pestpcbsrv\HPCHEM1\FID_B\Data\FB121120\
 Data File : FB025332.D
 Signal(s) : FID2B.CH
 Acq On : 11 Dec 2020 10:13
 Operator : DD/AJ
 Sample : 20 PPB GRO STD
 Misc :
 ALS Vial : 1 Sample Multiplier: 1

Instrument :
 FID_B
 ClientSampled :

Integration File: Calibration.e
 Quant Time: Dec 11 21:57:53 2020
 Quant Method : Z:\pestpcbsrv\HPCHEM1\FID_B\Method\FB120220.M
 Quant Title :
 QLast Update : Wed Dec 02 15:24:25 2020
 Response via : Initial Calibration
 Integrator: ChemStation

Volume Inj. : 5 g/ml
 Signal Phase : RTX-502.2
 Signal Info : 60mx0.53mmx3.00um

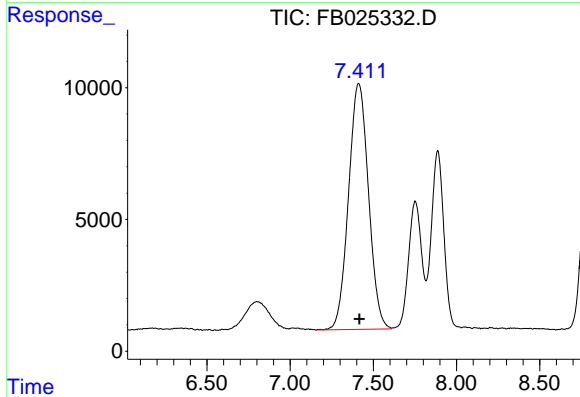




#1 2-Methylpentane

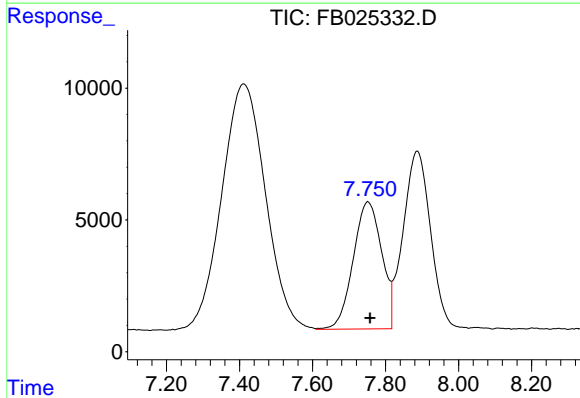
R.T.: 4.684 min
 Delta R.T.: -0.003 min
 Response: 815975
 Conc: 27.14 ng/ml

Instrument :
 FID_B
 ClientSampled :



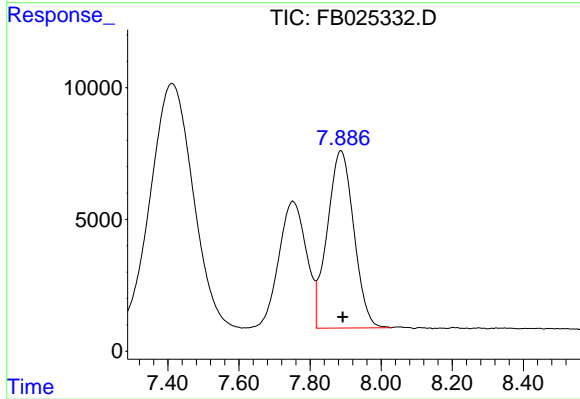
#2 2,2,4-Trimethylpentane

R.T.: 7.412 min
 Delta R.T.: -0.005 min
 Response: 777644
 Conc: 25.84 ng/ml



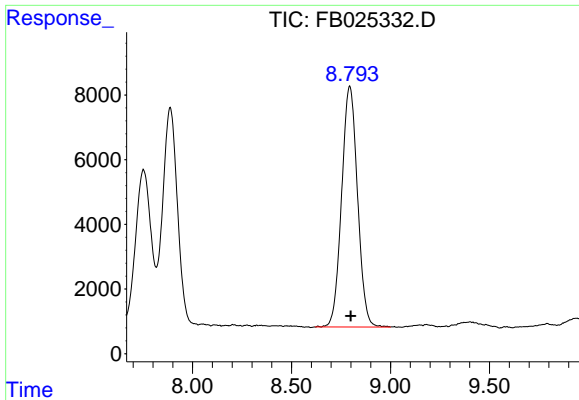
#3 n-Heptane

R.T.: 7.752 min
 Delta R.T.: -0.006 min
 Response: 261844
 Conc: 8.84 ng/ml



#4 Benzene

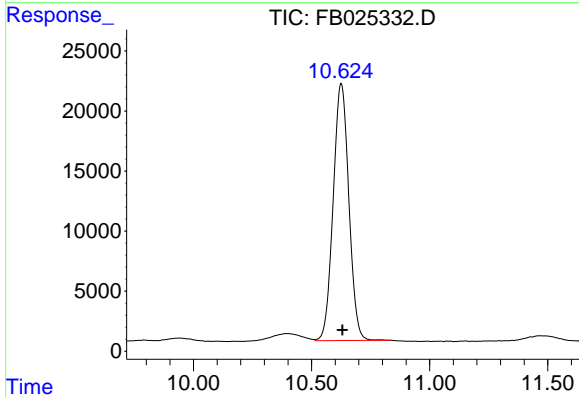
R.T.: 7.887 min
 Delta R.T.: -0.005 min
 Response: 350000
 Conc: 9.46 ng/ml



#5 AAA-TFT

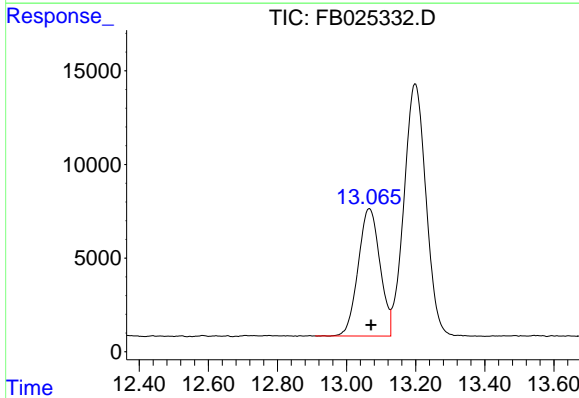
R.T.: 8.794 min
 Delta R.T.: -0.005 min
 Response: 414816
 Conc: 19.73 ng/ml

Instrument :
 FID_B
 ClientSampled :



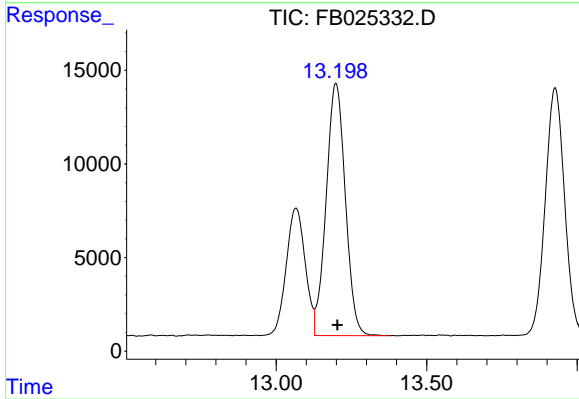
#6 Toluene

R.T.: 10.626 min
 Delta R.T.: -0.004 min
 Response: 986801
 Conc: 28.08 ng/ml



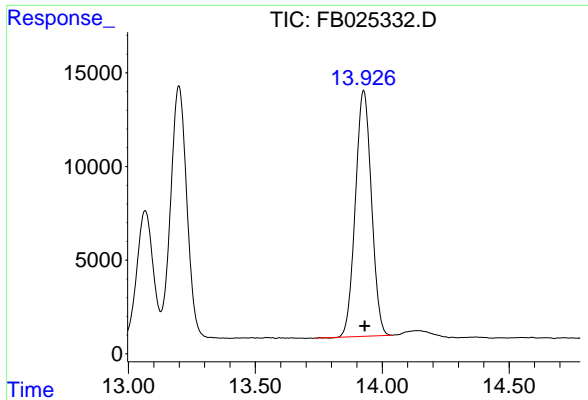
#7 Ethylbenzene

R.T.: 13.066 min
 Delta R.T.: -0.004 min
 Response: 297855
 Conc: 9.12 ng/ml



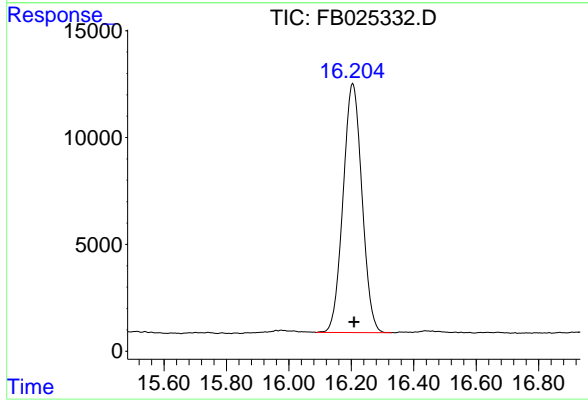
#8 m-Xylene

R.T.: 13.199 min
 Delta R.T.: -0.004 min
 Response: 596420
 Conc: 18.43 ng/ml



#9 O-Xylene
R.T.: 13.927 min
Delta R.T.: -0.004 min
Response: 576325
Conc: 18.23 ng/ml

Instrument :
FID_B
ClientSampleId :



#10 1,2,4-Trimethylbenzene
R.T.: 16.205 min
Delta R.T.: -0.004 min
Response: 490015
Conc: 18.04 ng/ml