

Data Path : Z:\pestpcbsrv\HPCHEM1\FID_B\Data\FB121619\
 Data File : FB023232.D
 Signal(s) : FID2B.CH
 Acq On : 16 Dec 2019 15:24
 Operator : DD/AJ
 Sample : K6247-02MSD
 Misc : 5.05g/5.00ml DI WATER
 ALS Vial : 10 Sample Multiplier: 1

Integration File: Calibration.e
 Quant Time: Dec 17 00:07:41 2019
 Quant Method : Z:\pestpcbsrv\HPCHEM1\FID_B\Method\FB112219.M
 Quant Title :
 QLast Update : Fri Nov 22 12:34:56 2019
 Response via : Initial Calibration
 Integrator: ChemStation

Volume Inj. : 5 g/ml
 Signal Phase : RTX-502.2
 Signal Info : 60mx0.53mmx3.00um

Compound	R.T.	Response	Conc Units

System Monitoring Compounds			
5) s AAA-TFT	8.795	403244	16.416 ng/ml
Target Compounds			
1) t 2-Methylpentane	4.687	739605	22.633 ng/ml
2) t 2,2,4-Trimethylpentane	7.414	843422	24.187 ng/ml
3) t n-Heptane	7.754	269727	7.845 ng/ml
4) t Benzene	7.889	350389	8.410 ng/ml
6) t Toluene	10.626	1004042	24.924 ng/ml
7) t Ethylbenzene	13.067	309929	8.032 ng/ml
8) t m-Xylene	13.199	592696	16.287 ng/ml
9) t O-Xylene	13.927	584436	16.832 ng/ml
10) t 1,2,4-Trimethylbenzene	16.205	508764	18.142 ng/ml

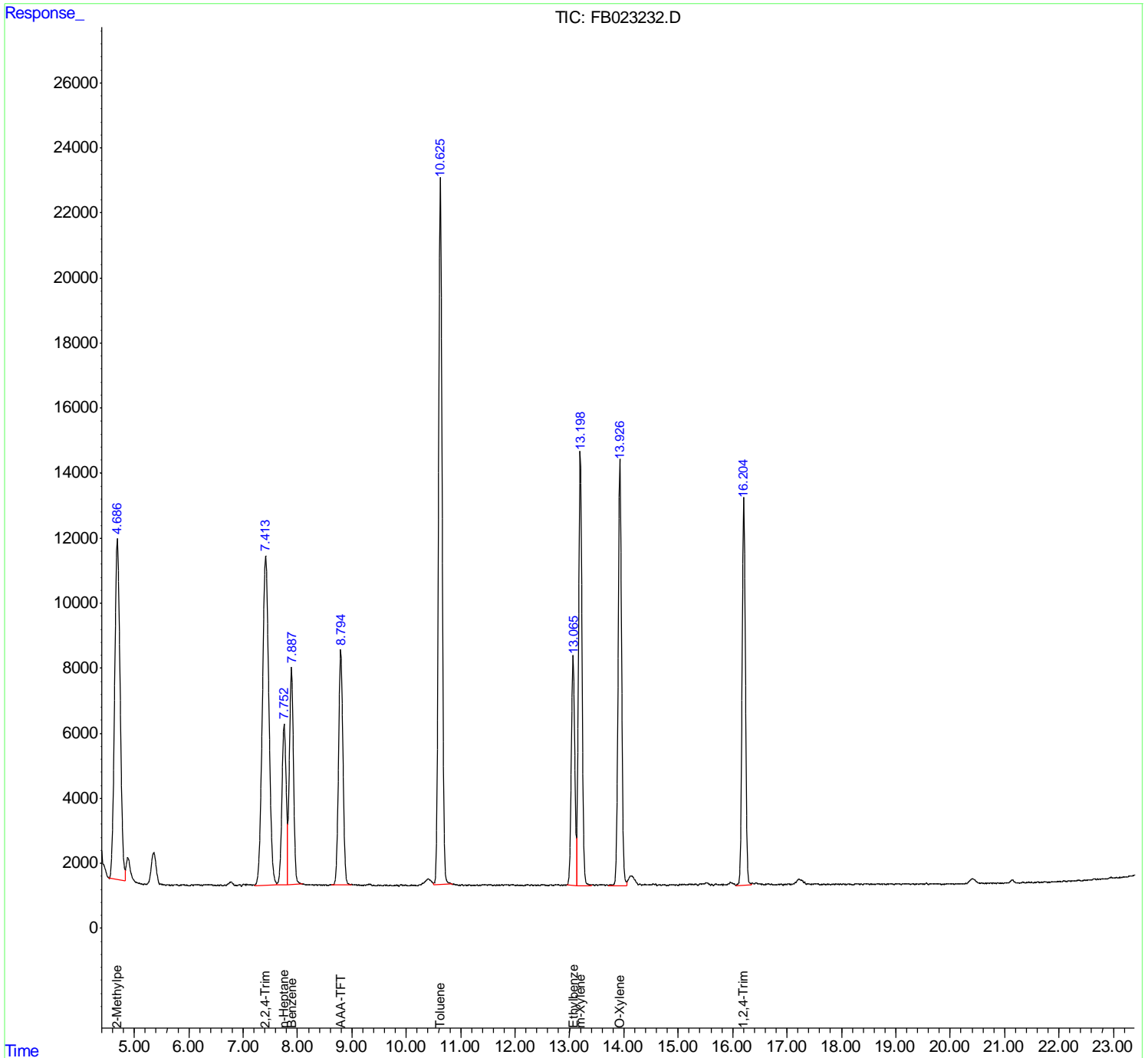
(f)=RT Delta > 1/2 Window

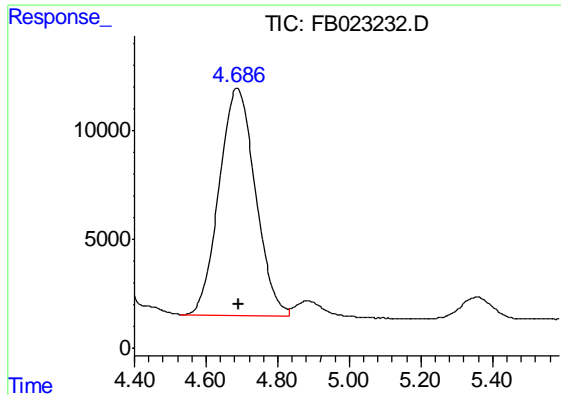
(m)=manual int.

Data Path : Z:\pestpcbsrv\HPCHEM1\FID_B\Data\FB121619\
 Data File : FB023232.D
 Signal(s) : FID2B.CH
 Acq On : 16 Dec 2019 15:24
 Operator : DD/AJ
 Sample : K6247-02MSD
 Misc : 5.05g/5.00ml DI WATER
 ALS Vial : 10 Sample Multiplier: 1

Integration File: Calibration.e
 Quant Time: Dec 17 00:07:41 2019
 Quant Method : Z:\pestpcbsrv\HPCHEM1\FID_B\Method\FB112219.M
 Quant Title :
 QLast Update : Fri Nov 22 12:34:56 2019
 Response via : Initial Calibration
 Integrator: ChemStation

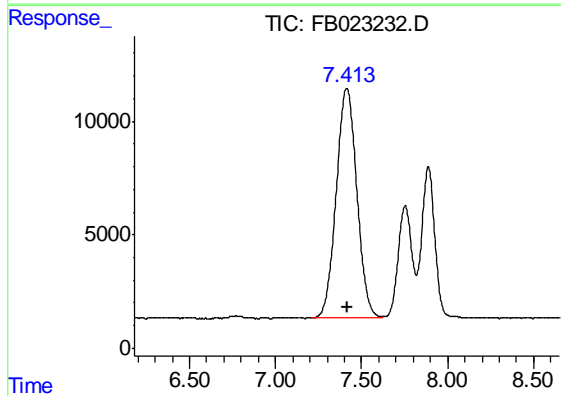
Volume Inj. : 5 g/ml
 Signal Phase : RTX-502.2
 Signal Info : 60mx0.53mmx3.00um





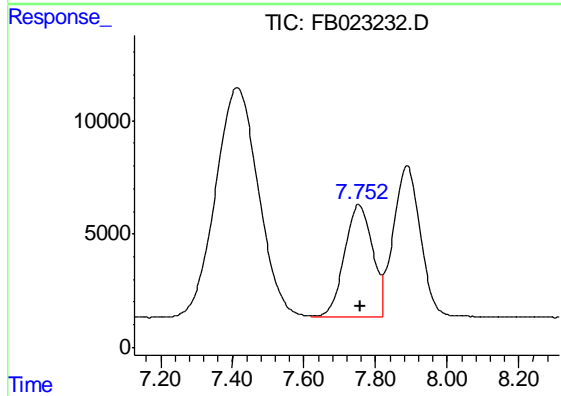
#1 2-Methylpentane

R.T.: 4.687 min
Delta R.T.: -0.004 min
Response: 739605
Conc: 22.63 ng/ml



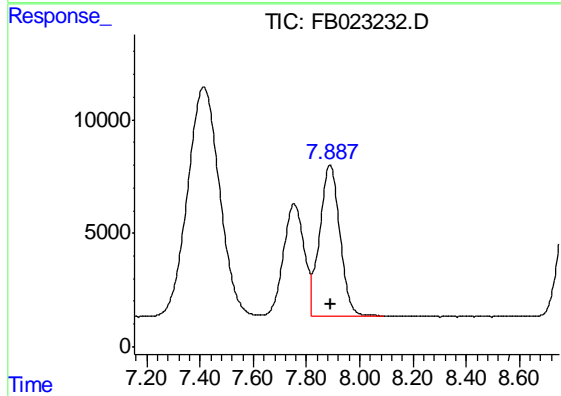
#2 2,2,4-Trimethylpentane

R.T.: 7.414 min
Delta R.T.: -0.004 min
Response: 843422
Conc: 24.19 ng/ml



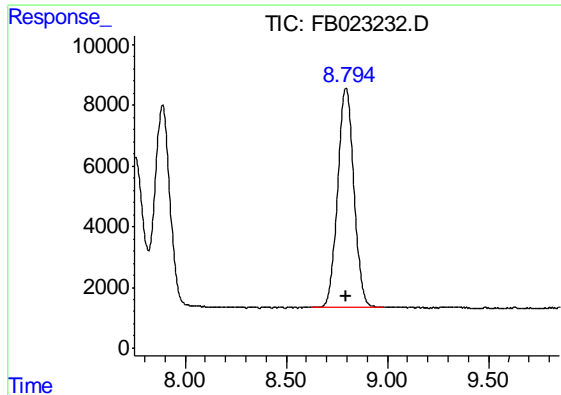
#3 n-Heptane

R.T.: 7.754 min
Delta R.T.: -0.004 min
Response: 269727
Conc: 7.84 ng/ml



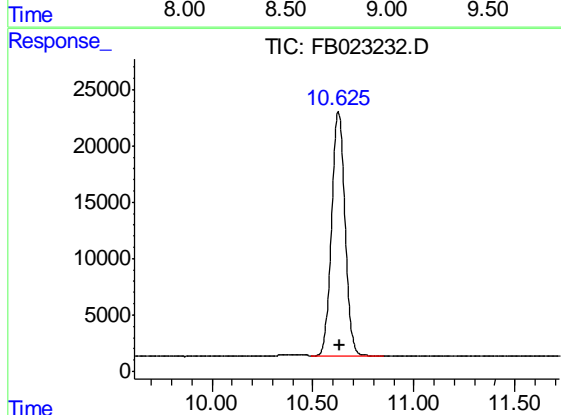
#4 Benzene

R.T.: 7.889 min
Delta R.T.: -0.004 min
Response: 350389
Conc: 8.41 ng/ml



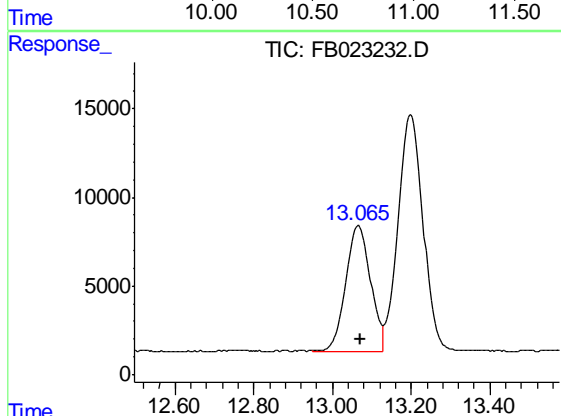
#5 AAA-TFT

R.T.: 8.795 min
Delta R.T.: -0.004 min
Response: 403244
Conc: 16.42 ng/ml



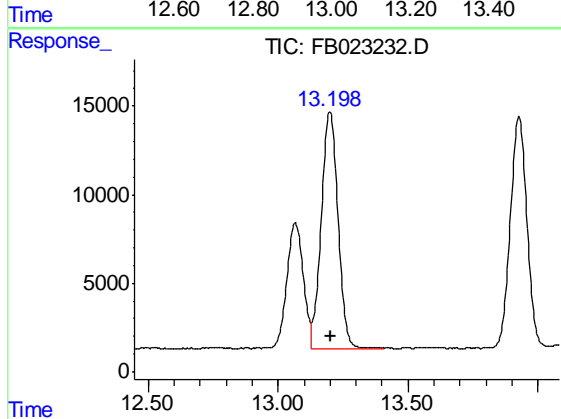
#6 Toluene

R.T.: 10.626 min
Delta R.T.: -0.004 min
Response: 1004042
Conc: 24.92 ng/ml



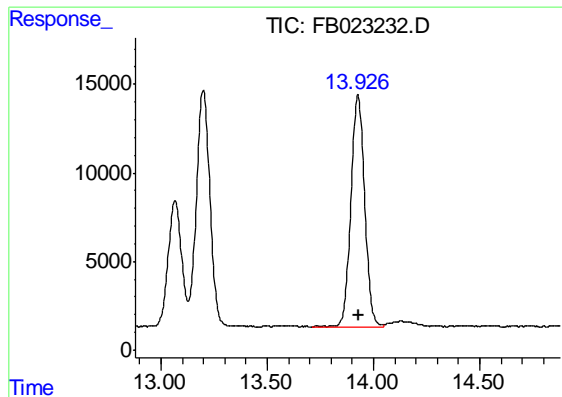
#7 Ethylbenzene

R.T.: 13.067 min
Delta R.T.: -0.004 min
Response: 309929
Conc: 8.03 ng/ml



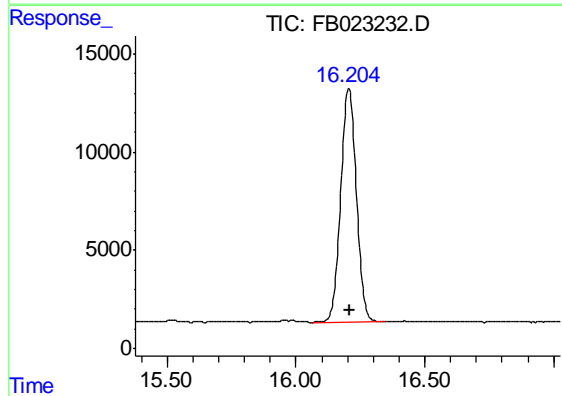
#8 m-Xylene

R.T.: 13.199 min
Delta R.T.: -0.004 min
Response: 592696
Conc: 16.29 ng/ml



#9 O-Xylene

R.T.: 13.927 min
Delta R.T.: -0.004 min
Response: 584436
Conc: 16.83 ng/ml



#10 1,2,4-Trimethylbenzene

R.T.: 16.205 min
Delta R.T.: -0.005 min
Response: 508764
Conc: 18.14 ng/ml