

Data Path : Z:\pestpcbsrv\HPCHEM1\FID_B\Data\FB122719\
 Data File : FB023321.D
 Signal(s) : FID2B.CH
 Acq On : 27 Dec 2019 9:29
 Operator : DD/AJ
 Sample : 20 PPB GRO STD
 Misc :
 ALS Vial : 1 Sample Multiplier: 1

Instrument :
 FID_B
 ClientSampleId :

Integration File: Calibration.e
 Quant Time: Dec 27 21:48:35 2019
 Quant Method : Z:\pestpcbsrv\HPCHEM1\FID_B\Method\FB121919.M
 Quant Title :
 QLast Update : Thu Dec 19 12:43:06 2019
 Response via : Initial Calibration
 Integrator: ChemStation

Volume Inj. : 5 g/ml
 Signal Phase : RTX-502.2
 Signal Info : 60mx0.53mmx3.00um

Compound	R.T.	Response	Conc Units

System Monitoring Compounds			
5) s AAA-TFT	8.790	477505	20.136 ng/ml
Target Compounds			
1) t 2-Methylpentane	4.682	942558	30.454 ng/ml
2) t 2,2,4-Trimethylpentane	7.409	1042125	31.196 ng/ml
3) t n-Heptane	7.749	343324	10.408 ng/ml
4) t Benzene	7.883	407730	10.210 ng/ml
6) t Toluene	10.622	1173256	30.471 ng/ml
7) t Ethylbenzene	13.062	365275	10.064 ng/ml
8) t m-Xylene	13.195	697435	20.092 ng/ml
9) t O-Xylene	13.923	674885	20.037 ng/ml
10) t 1,2,4-Trimethylbenzene	16.201	573567	20.442 ng/ml

(f)=RT Delta > 1/2 Window

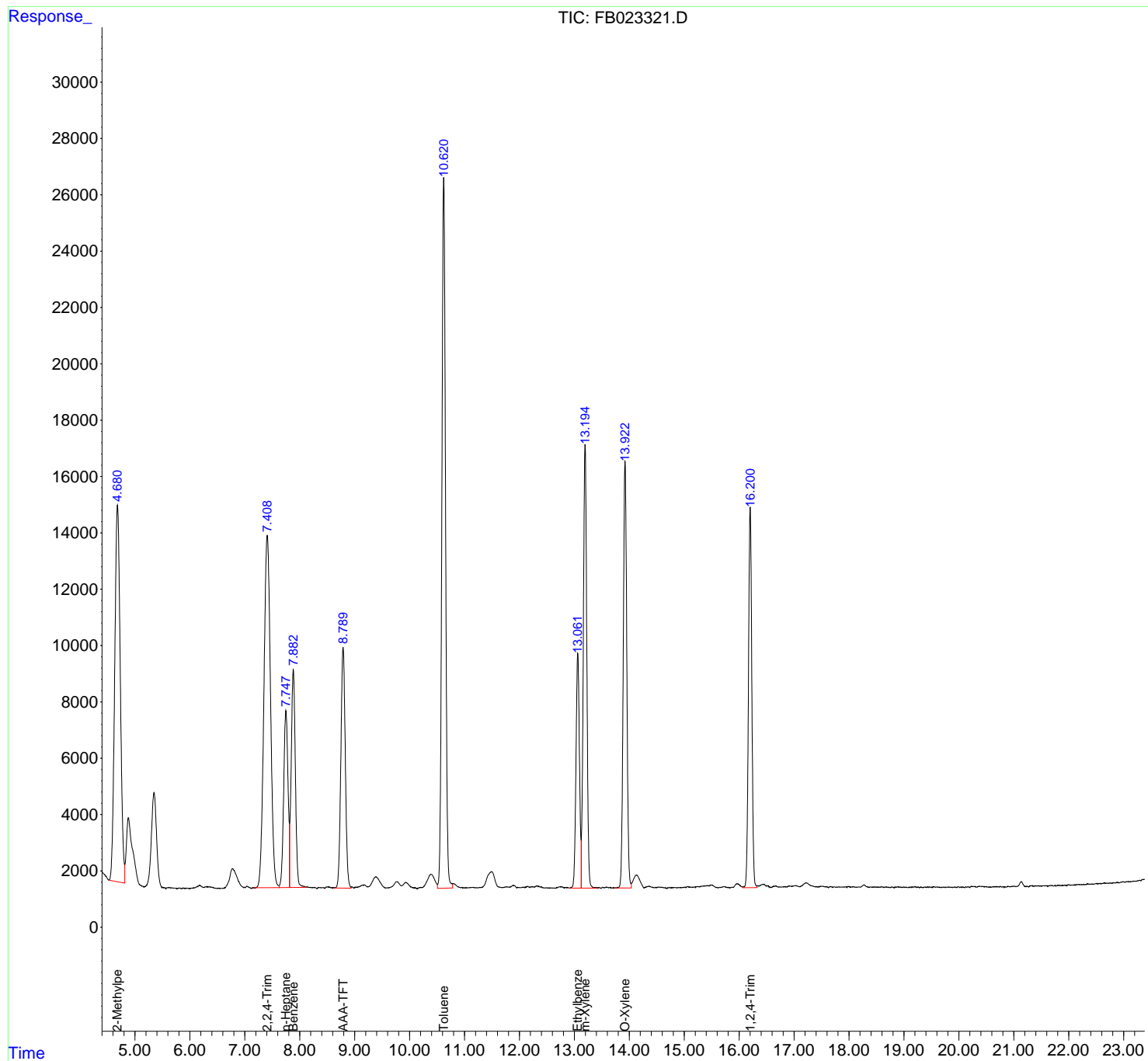
(m)=manual int.

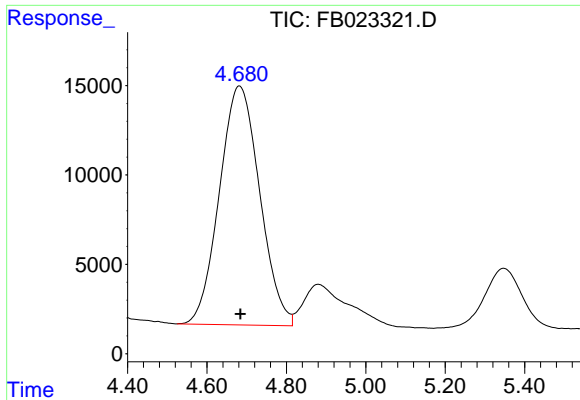
Data Path : Z:\pestpcbsrv\HPCHEM1\FID_B\Data\FB122719\
Data File : FB023321.D
Signal(s) : FID2B.CH
Acq On : 27 Dec 2019 9:29
Operator : DD/AJ
Sample : 20 PPB GRO STD
Misc :
ALS Vial : 1 Sample Multiplier: 1

Instrument :
FID_B
ClientSampled :

Integration File: Calibration.e
Quant Time: Dec 27 21:48:35 2019
Quant Method : Z:\pestpcbsrv\HPCHEM1\FID_B\Method\FB121919.M
Quant Title :
QLast Update : Thu Dec 19 12:43:06 2019
Response via : Initial Calibration
Integrator: ChemStation

Volume Inj. : 5 g/ml
Signal Phase : RTX-502.2
Signal Info : 60mx0.53mmx3.00um

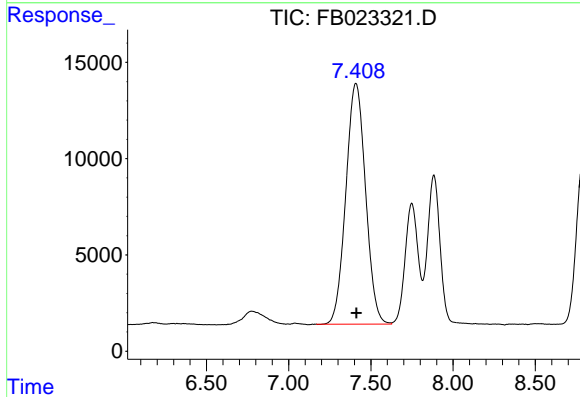




#1 2-Methylpentane

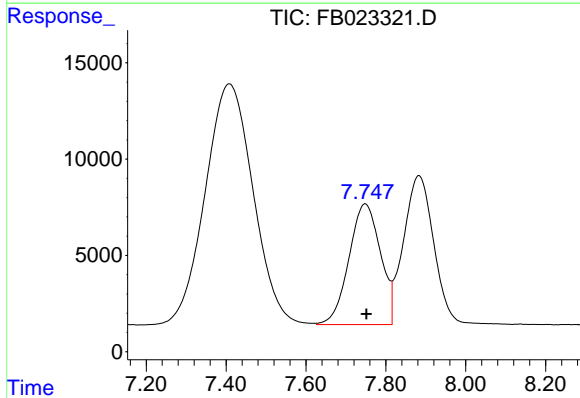
R.T.: 4.682 min
 Delta R.T.: -0.002 min
 Response: 942558
 Conc: 30.45 ng/ml

Instrument :
 FID_B
 ClientSampleId :



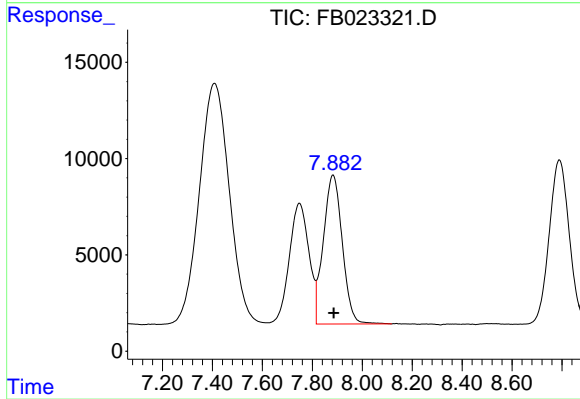
#2 2,2,4-Trimethylpentane

R.T.: 7.409 min
 Delta R.T.: -0.002 min
 Response: 1042125
 Conc: 31.20 ng/ml



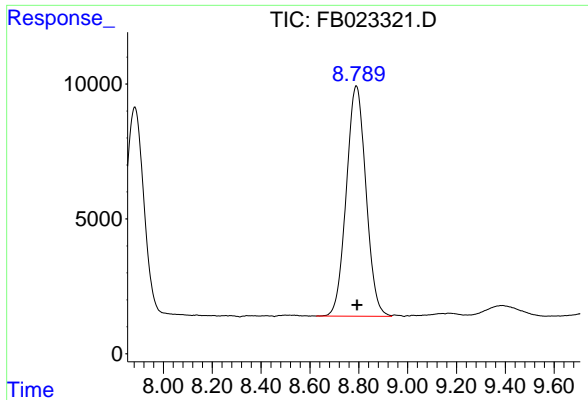
#3 n-Heptane

R.T.: 7.749 min
 Delta R.T.: -0.003 min
 Response: 343324
 Conc: 10.41 ng/ml



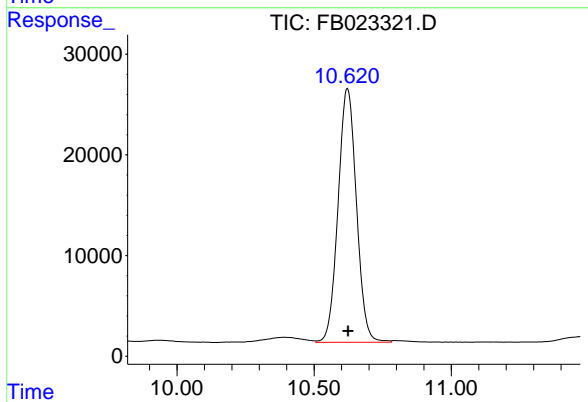
#4 Benzene

R.T.: 7.883 min
 Delta R.T.: -0.003 min
 Response: 407730
 Conc: 10.21 ng/ml

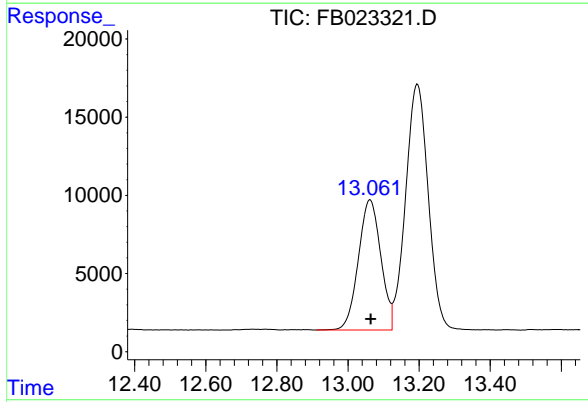


#5 AAA-TFT
 R.T.: 8.790 min
 Delta R.T.: -0.003 min
 Response: 477505
 Conc: 20.14 ng/ml

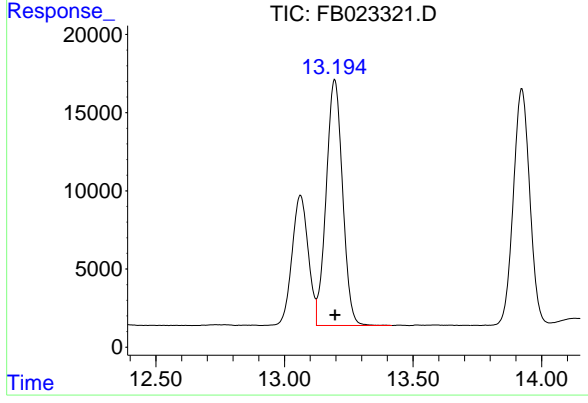
Instrument :
 FID_B
 ClientSampled :



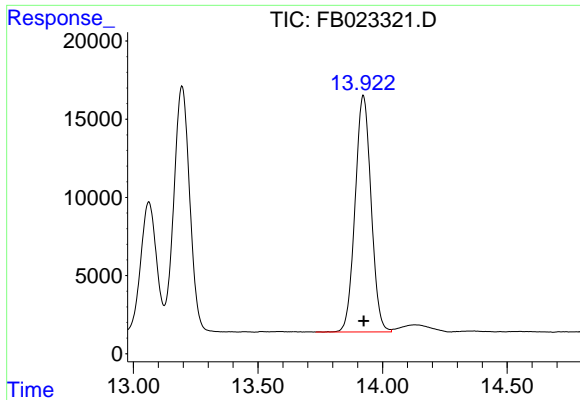
#6 Toluene
 R.T.: 10.622 min
 Delta R.T.: -0.002 min
 Response: 1173256
 Conc: 30.47 ng/ml



#7 Ethylbenzene
 R.T.: 13.062 min
 Delta R.T.: -0.002 min
 Response: 365275
 Conc: 10.06 ng/ml

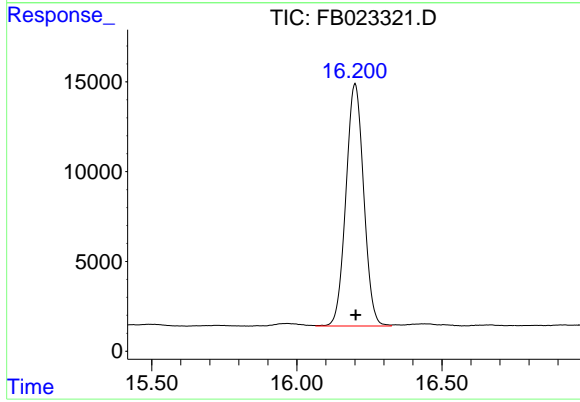


#8 m-Xylene
 R.T.: 13.195 min
 Delta R.T.: -0.002 min
 Response: 697435
 Conc: 20.09 ng/ml



#9 O-Xylene
R.T.: 13.923 min
Delta R.T.: -0.002 min
Response: 674885
Conc: 20.04 ng/ml

Instrument :
FID_B
ClientSampleId :



#10 1,2,4-Trimethylbenzene
R.T.: 16.201 min
Delta R.T.: -0.002 min
Response: 573567
Conc: 20.44 ng/ml