

Data Path : Z:\pestpcbsrv\HPCHEM1\FID\_B\Data\FB122719\  
 Data File : FB023330.D  
 Signal(s) : FID2B.CH  
 Acq On : 27 Dec 2019 16:56  
 Operator : DD/AJ  
 Sample : K6441-06  
 Misc : 5.00g/5.00ml DI WATER  
 ALS Vial : 10 Sample Multiplier: 1

Instrument :  
 FID\_B  
 ClientSampleId :

Integration File: Calibration.e  
 Quant Time: Dec 27 21:50:11 2019  
 Quant Method : Z:\pestpcbsrv\HPCHEM1\FID\_B\Method\FB121919.M  
 Quant Title :  
 QLast Update : Thu Dec 19 12:43:06 2019  
 Response via : Initial Calibration  
 Integrator: ChemStation

Volume Inj. : 5 g/ml  
 Signal Phase : RTX-502.2  
 Signal Info : 60mx0.53mmx3.00um

Compound	R.T.	Response	Conc Units
-----			
System Monitoring Compounds			
5) s AAA-TFT	8.797	273587	11.537 ng/ml
Target Compounds			
6) t Toluene	10.621	1171	0.030 ng/ml
7) t Ethylbenzene	13.048	1508	0.042 ng/ml
8) t m-Xylene	13.199	8312	0.239 ng/ml
9) t O-Xylene	13.922	2782	0.083 ng/ml
10) t 1,2,4-Trimethylbenzene	16.218	2190	0.078 ng/ml
-----			

(f)=RT Delta > 1/2 Window

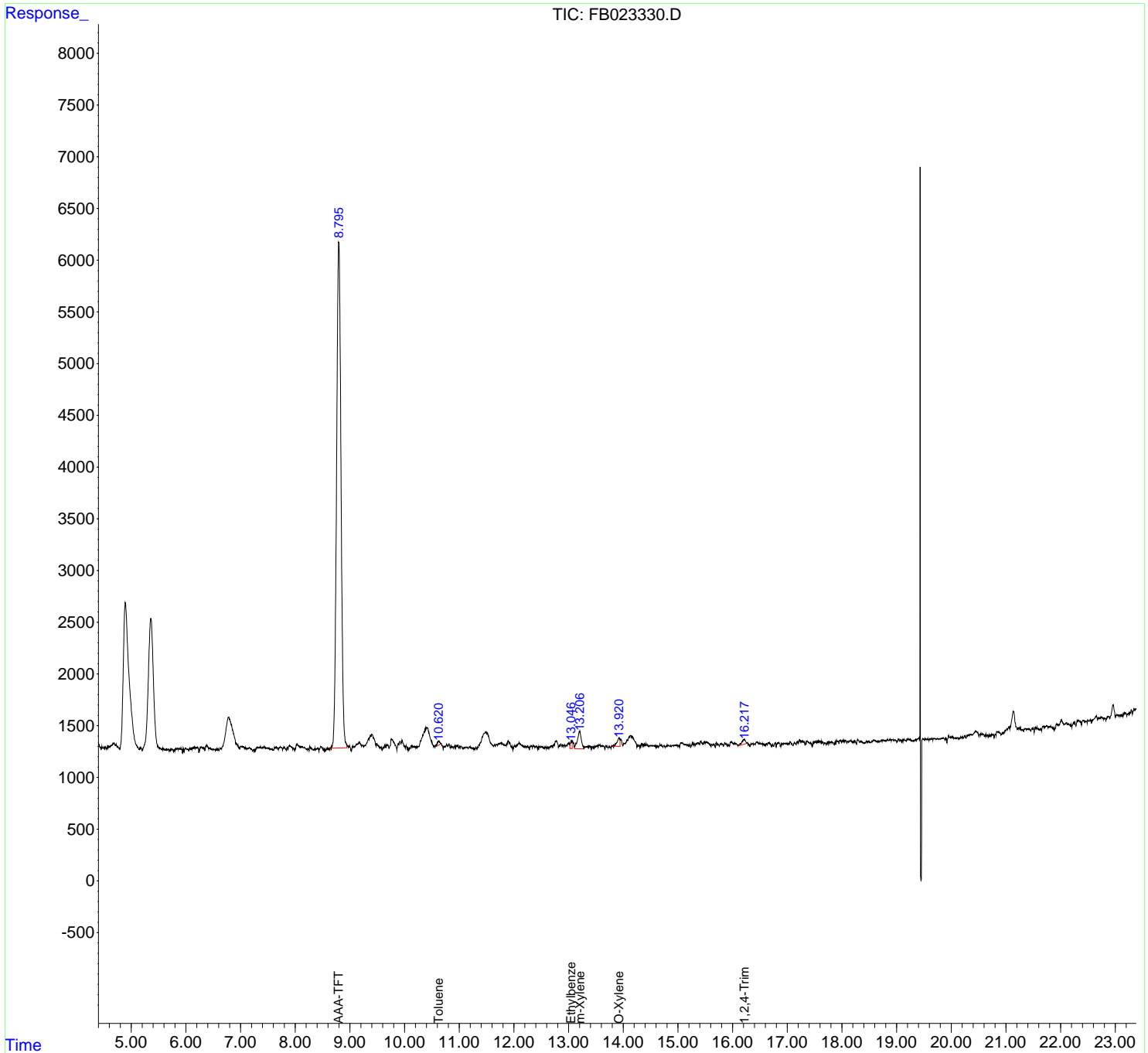
(m)=manual int.

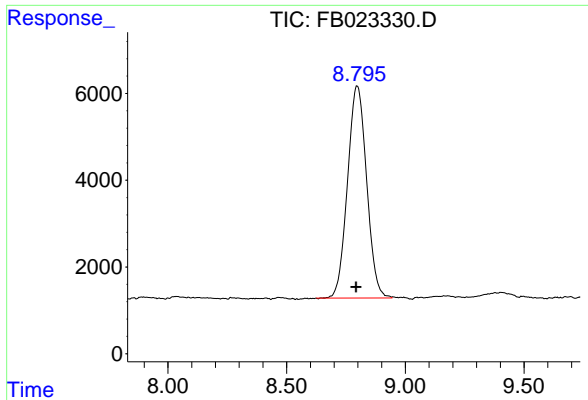
Data Path : Z:\pestpcbsrv\HPCHEM1\FID\_B\Data\FB122719\  
 Data File : FB023330.D  
 Signal(s) : FID2B.CH  
 Acq On : 27 Dec 2019 16:56  
 Operator : DD/AJ  
 Sample : K6441-06  
 Misc : 5.00g/5.00ml DI WATER  
 ALS Vial : 10 Sample Multiplier: 1

Instrument :  
 FID\_B  
 ClientSampled :

Integration File: Calibration.e  
 Quant Time: Dec 27 21:50:11 2019  
 Quant Method : Z:\pestpcbsrv\HPCHEM1\FID\_B\Method\FB121919.M  
 Quant Title :  
 QLast Update : Thu Dec 19 12:43:06 2019  
 Response via : Initial Calibration  
 Integrator: ChemStation

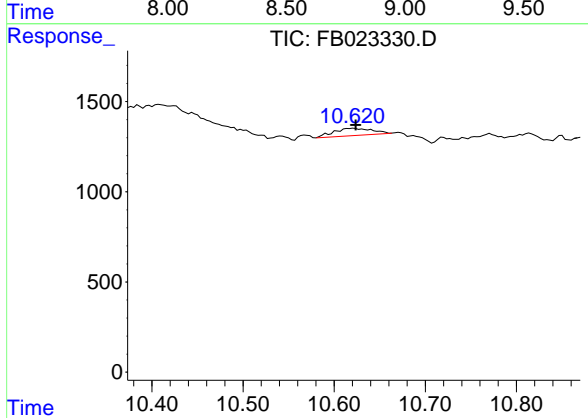
Volume Inj. : 5 g/ml  
 Signal Phase : RTX-502.2  
 Signal Info : 60mx0.53mmx3.00um



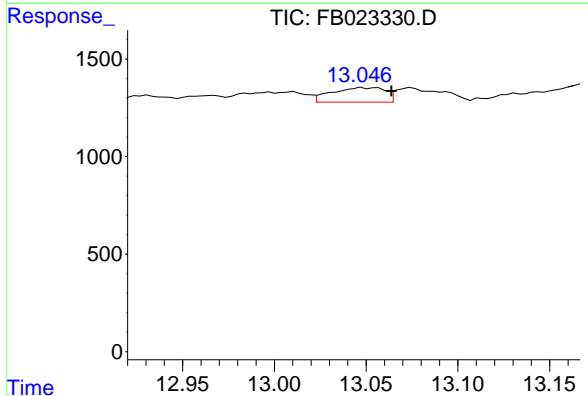


#5 AAA-TFT  
 R.T.: 8.797 min  
 Delta R.T.: 0.004 min  
 Response: 273587  
 Conc: 11.54 ng/ml

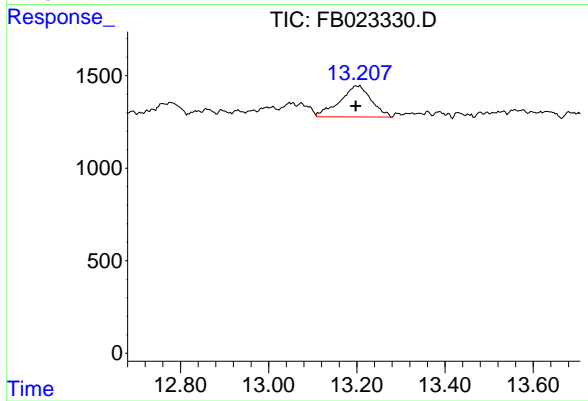
Instrument :  
 FID\_B  
 ClientSampleId :



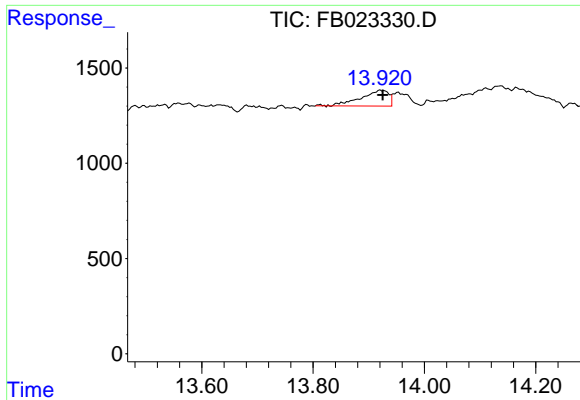
#6 Toluene  
 R.T.: 10.621 min  
 Delta R.T.: -0.002 min  
 Response: 1171  
 Conc: 0.03 ng/ml



#7 Ethylbenzene  
 R.T.: 13.048 min  
 Delta R.T.: -0.015 min  
 Response: 1508  
 Conc: 0.04 ng/ml



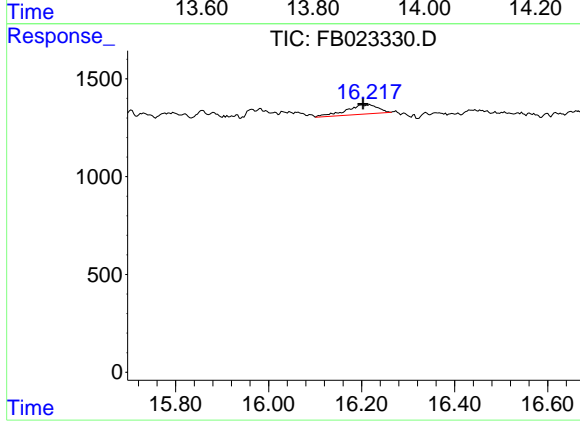
#8 m-Xylene  
 R.T.: 13.199 min  
 Delta R.T.: 0.002 min  
 Response: 8312  
 Conc: 0.24 ng/ml



#9 O-Xylene

R.T.: 13.922 min  
Delta R.T.: -0.003 min  
Response: 2782  
Conc: 0.08 ng/ml

Instrument :  
FID\_B  
ClientSampleId :



#10 1,2,4-Trimethylbenzene

R.T.: 16.218 min  
Delta R.T.: 0.015 min  
Response: 2190  
Conc: 0.08 ng/ml