

Data Path : P:\HPCHEM1\FID_B\Data\FB041018\
 Data File : FB014720.D
 Signal(s) : FID2B.CH
 Acq On : 10 Apr 2018 14:27
 Operator : MJ/SJ
 Sample : BSF0410S1
 Misc : 5.00g/5.00mL DI Water
 ALS Vial : 9 Sample Multiplier: 1

Instrument :
 FID_B
 ClientSampleId :

Integration File: Calibration.e
 Quant Time: Apr 11 06:58:49 2018
 Quant Method : P:\HPCHEM1\FID_B\Method\FB041018.M
 Quant Title :
 QLast Update : Tue Apr 10 12:53:03 2018
 Response via : Initial Calibration
 Integrator: ChemStation

Volume Inj. : 5 g/ml
 Signal Phase : RTX-502.2
 Signal Info : 60mx0.53mmx3.00um

Compound	R.T.	Response	Conc Units

System Monitoring Compounds			
5) s AAA-TFT	9.108	164996	18.765 ng/ml
Target Compounds			
1) t 2-Methylpentane	4.960	502185	30.302 ng/ml
2) t 2,2,4-Trimethylpentane	7.725	473653	29.726 ng/ml
3) t n-Heptane	8.064	150719	9.875 ng/ml
4) t Benzene	8.203	188757	9.896 ng/ml
6) t Toluene	10.957	508188	30.497 ng/ml
7) t Ethylbenzene	13.406	199976	10.148 ng/ml
8) t m-Xylene	13.538	432576	20.324 ng/ml
9) t O-Xylene	14.270	435489	19.940 ng/ml
10) t 1,2,4-Trimethylbenzene	16.553	466680	20.218 ng/ml

(f)=RT Delta > 1/2 Window

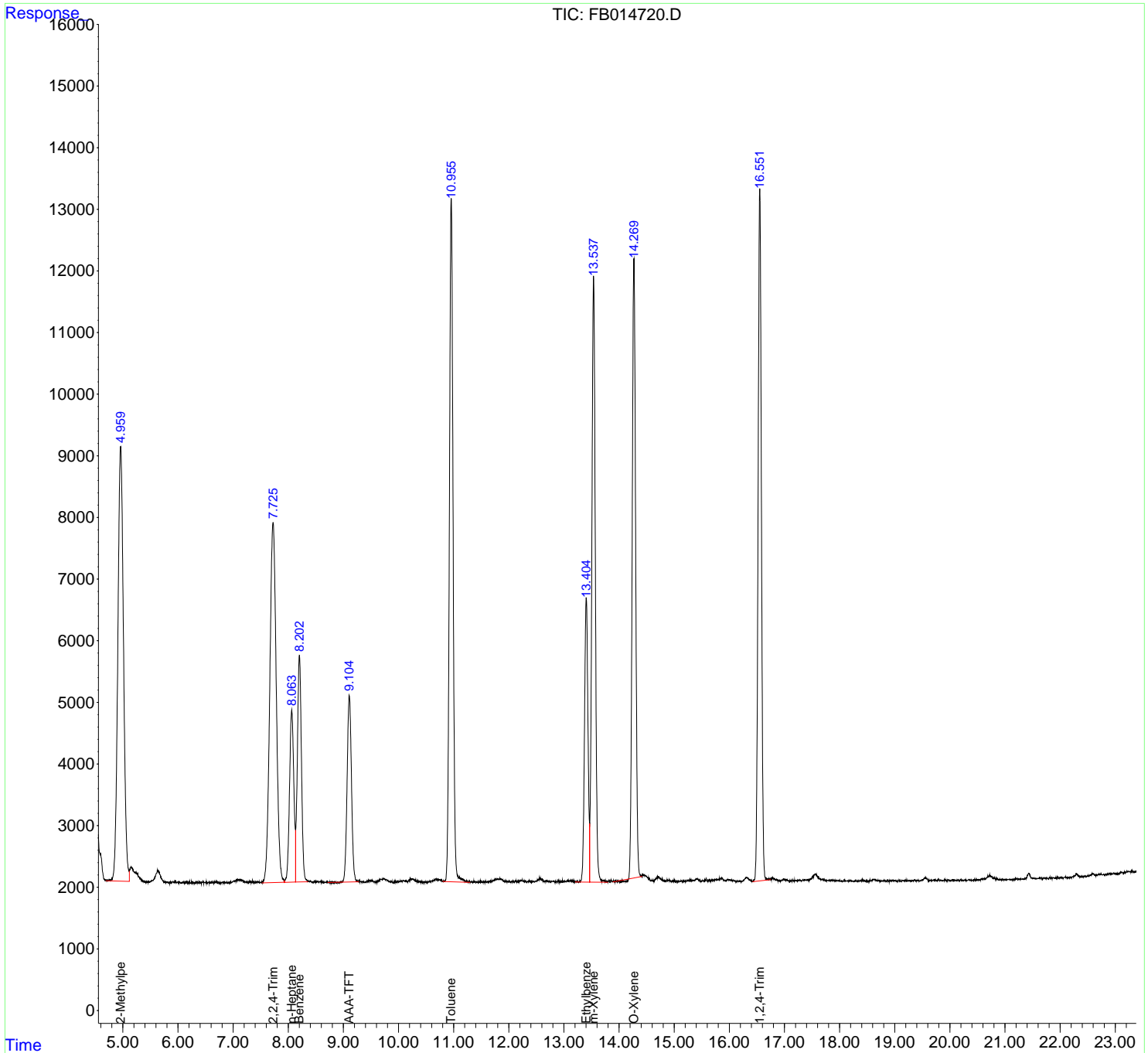
(m)=manual int.

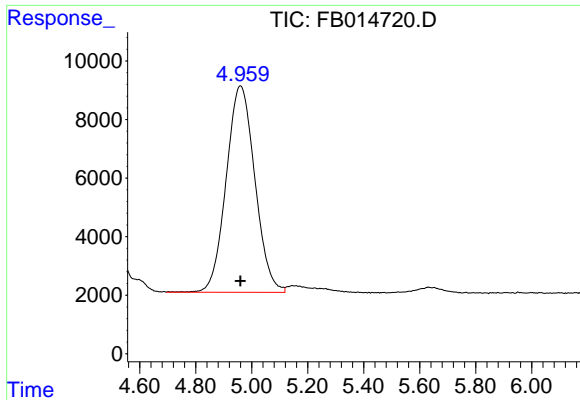
Data Path : P:\HPCHEM1\FID_B\Data\FB041018\
 Data File : FB014720.D
 Signal(s) : FID2B.CH
 Acq On : 10 Apr 2018 14:27
 Operator : MJ/SJ
 Sample : BSF0410S1
 Misc : 5.00g/5.00mL DI Water
 ALS Vial : 9 Sample Multiplier: 1

Instrument :
 FID_B
 ClientSampled :

Integration File: Calibration.e
 Quant Time: Apr 11 06:58:49 2018
 Quant Method : P:\HPCHEM1\FID_B\Method\FB041018.M
 Quant Title :
 QLast Update : Tue Apr 10 12:53:03 2018
 Response via : Initial Calibration
 Integrator: ChemStation

Volume Inj. : 5 g/ml
 Signal Phase : RTX-502.2
 Signal Info : 60mx0.53mmx3.00um

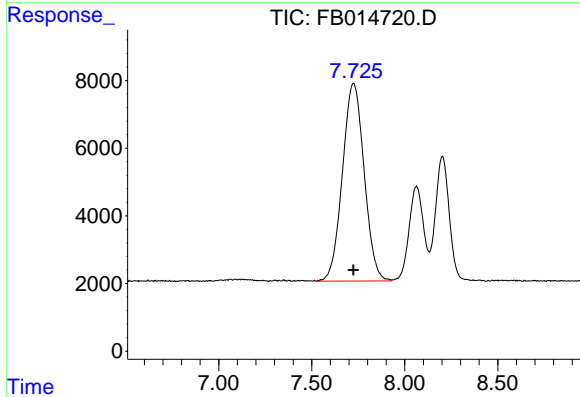




#1 2-Methylpentane

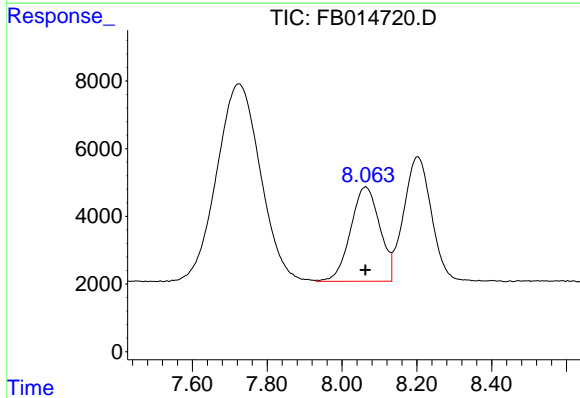
R.T.: 4.960 min
 Delta R.T.: 0.000 min
 Response: 502185
 Conc: 30.30 ng/ml

Instrument :
 FID_B
 ClientSampled :



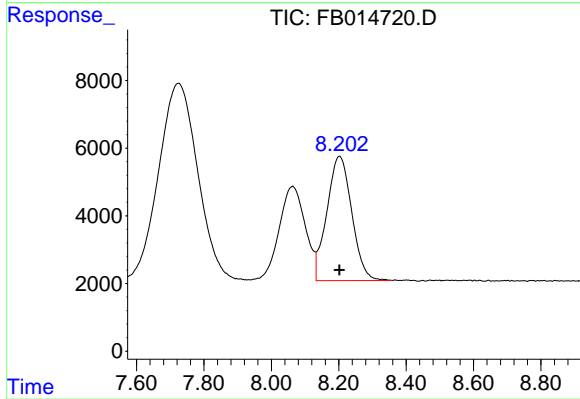
#2 2,2,4-Trimethylpentane

R.T.: 7.725 min
 Delta R.T.: 0.002 min
 Response: 473653
 Conc: 29.73 ng/ml



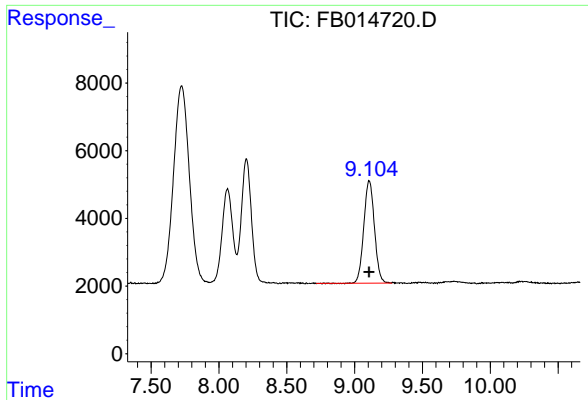
#3 n-Heptane

R.T.: 8.064 min
 Delta R.T.: 0.001 min
 Response: 150719
 Conc: 9.88 ng/ml



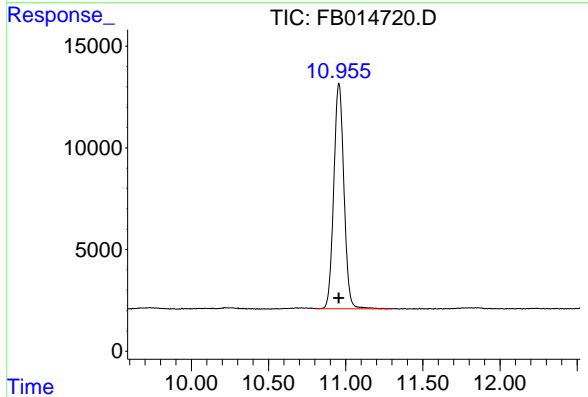
#4 Benzene

R.T.: 8.203 min
 Delta R.T.: 0.000 min
 Response: 188757
 Conc: 9.90 ng/ml

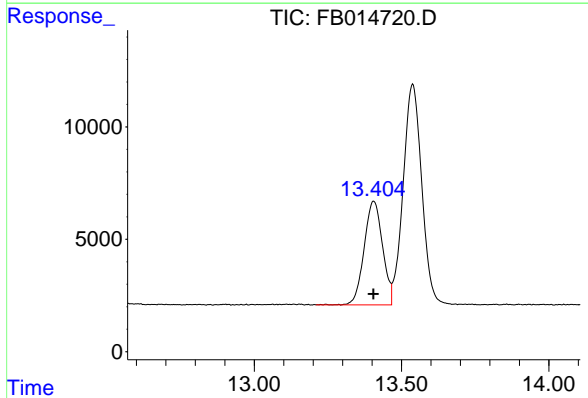


#5 AAA-TFT
 R.T.: 9.108 min
 Delta R.T.: 0.000 min
 Response: 164996
 Conc: 18.77 ng/ml

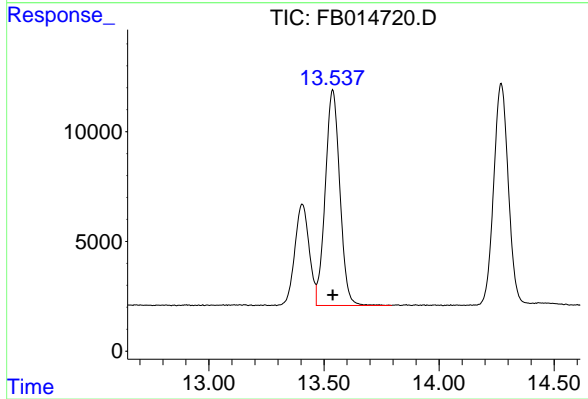
Instrument :
 FID_B
 ClientSampled :



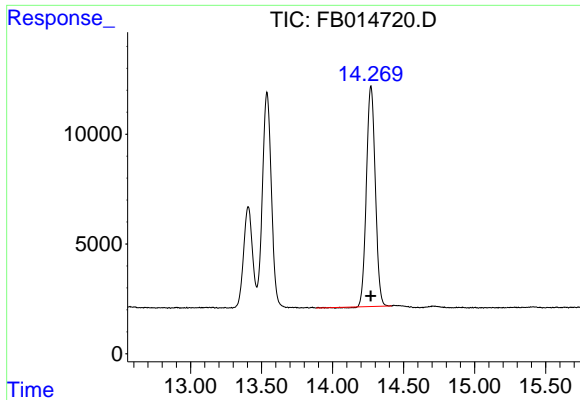
#6 Toluene
 R.T.: 10.957 min
 Delta R.T.: 0.000 min
 Response: 508188
 Conc: 30.50 ng/ml



#7 Ethylbenzene
 R.T.: 13.406 min
 Delta R.T.: 0.001 min
 Response: 199976
 Conc: 10.15 ng/ml



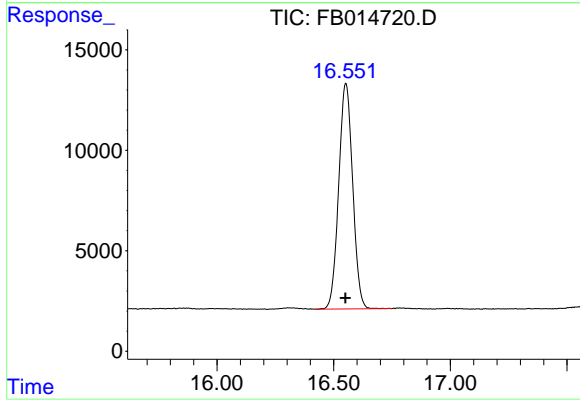
#8 m-Xylene
 R.T.: 13.538 min
 Delta R.T.: 0.001 min
 Response: 432576
 Conc: 20.32 ng/ml



#9 O-Xylene

R.T.: 14.270 min
Delta R.T.: 0.001 min
Response: 435489
Conc: 19.94 ng/ml

Instrument :
FID_B
ClientSampleId :



#10 1,2,4-Trimethylbenzene

R.T.: 16.553 min
Delta R.T.: 0.001 min
Response: 466680
Conc: 20.22 ng/ml