

Data Path : Z:\pestpcbsrv\HPCHEM1\FID_B\Data\FB062218\
 Data File : FB016353.D
 Signal(s) : FID2B.CH
 Acq On : 23 Jun 2018 8:57
 Operator : MJ/SJ
 Sample : J3642-06
 Misc : 5.01g/5.00mL DI Water
 ALS Vial : 40 Sample Multiplier: 1

Instrument :
 FID_B
 ClientSampleId :

Integration File: Calibration.e
 Quant Time: Jun 25 10:14:36 2018
 Quant Method : Z:\pestpcbsrv\HPCHEM1\FID_B\Method\FB060118.M
 Quant Title :
 QLast Update : Fri Jun 01 13:25:03 2018
 Response via : Initial Calibration
 Integrator: ChemStation

Volume Inj. : 5 g/ml
 Signal Phase : RTX-502.2
 Signal Info : 60mx0.53mmx3.00um

Compound	R.T.	Response	Conc Units

System Monitoring Compounds			
5) s AAA-TFT	9.114	118685	16.888 ng/ml
Target Compounds			

(f)=RT Delta > 1/2 Window

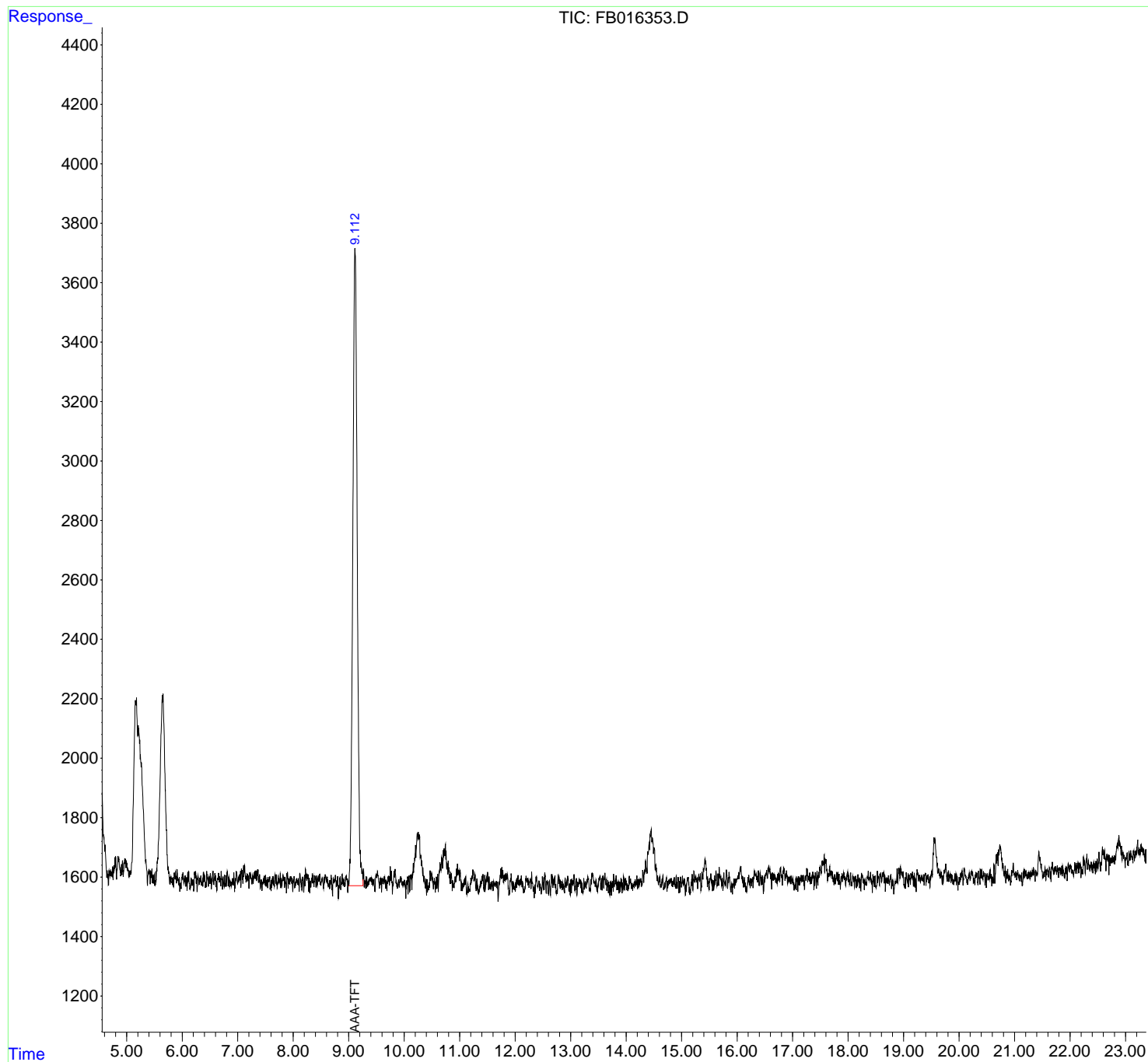
(m)=manual int.

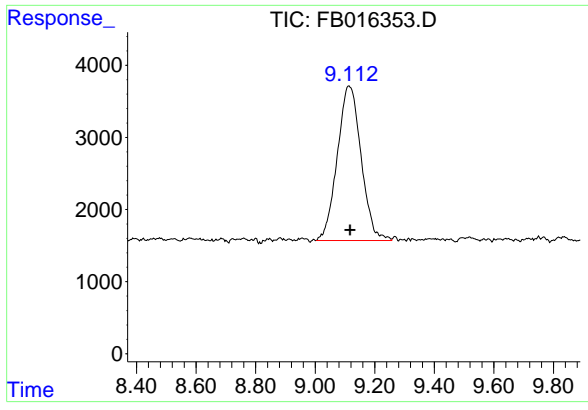
Data Path : Z:\pestpcbsrv\HPCHEM1\FID_B\Data\FB062218\
Data File : FB016353.D
Signal(s) : FID2B.CH
Acq On : 23 Jun 2018 8:57
Operator : MJ/SJ
Sample : J3642-06
Misc : 5.01g/5.00mL DI Water
ALS Vial : 40 Sample Multiplier: 1

Instrument :
FID_B
ClientSampled :

Integration File: Calibration.e
Quant Time: Jun 25 10:14:36 2018
Quant Method : Z:\pestpcbsrv\HPCHEM1\FID_B\Method\FB060118.M
Quant Title :
QLast Update : Fri Jun 01 13:25:03 2018
Response via : Initial Calibration
Integrator: ChemStation

Volume Inj. : 5 g/ml
Signal Phase : RTX-502.2
Signal Info : 60mx0.53mmx3.00um





#5 AAA-TFT

R.T.: 9.114 min
Delta R.T.: -0.003 min
Response: 118685
Conc: 16.89 ng/ml

Instrument :
FID_B
ClientSampleId :