

Data Path : Z:\pestpcbsrv\HPCHEM1\FID_B\Data\FB081318\
 Data File : FB017312.D
 Signal(s) : FID2B.CH
 Acq On : 13 Aug 2018 16:13
 Operator : MJ/SJ
 Sample : 20 PPB GRO STD
 Misc :
 ALS Vial : 14 Sample Multiplier: 1

Integration File: Calibration.e
 Quant Time: Aug 14 08:06:52 2018
 Quant Method : Z:\pestpcbsrv\HPCHEM1\FID_B\Method\FB080818.M
 Quant Title :
 QLast Update : Wed Aug 08 11:39:03 2018
 Response via : Initial Calibration
 Integrator: ChemStation

Volume Inj. : 5 g/ml
 Signal Phase : RTX-502.2
 Signal Info : 60mx0.53mmx3.00um

Compound	R.T.	Response	Conc Units

System Monitoring Compounds			
5) s AAA-TFT	9.114	162386	17.332 ng/ml
Target Compounds			
1) t 2-Methylpentane	4.967	486406	28.445 ng/ml
2) t 2,2,4-Trimethylpentane	7.730	469348	27.778 ng/ml
3) t n-Heptane	8.068	150760	9.358 ng/ml
4) t Benzene	8.208	184469	9.103 ng/ml
6) t Toluene	10.964	462271	28.045 ng/ml
7) t Ethylbenzene	13.414	149948	8.988 ng/ml
8) t m-Xylene	13.546	313122	16.703 ng/ml
9) t O-Xylene	14.278	327522	16.115 ng/ml
10) t 1,2,4-Trimethylbenzene	16.560	396752	17.715 ng/ml

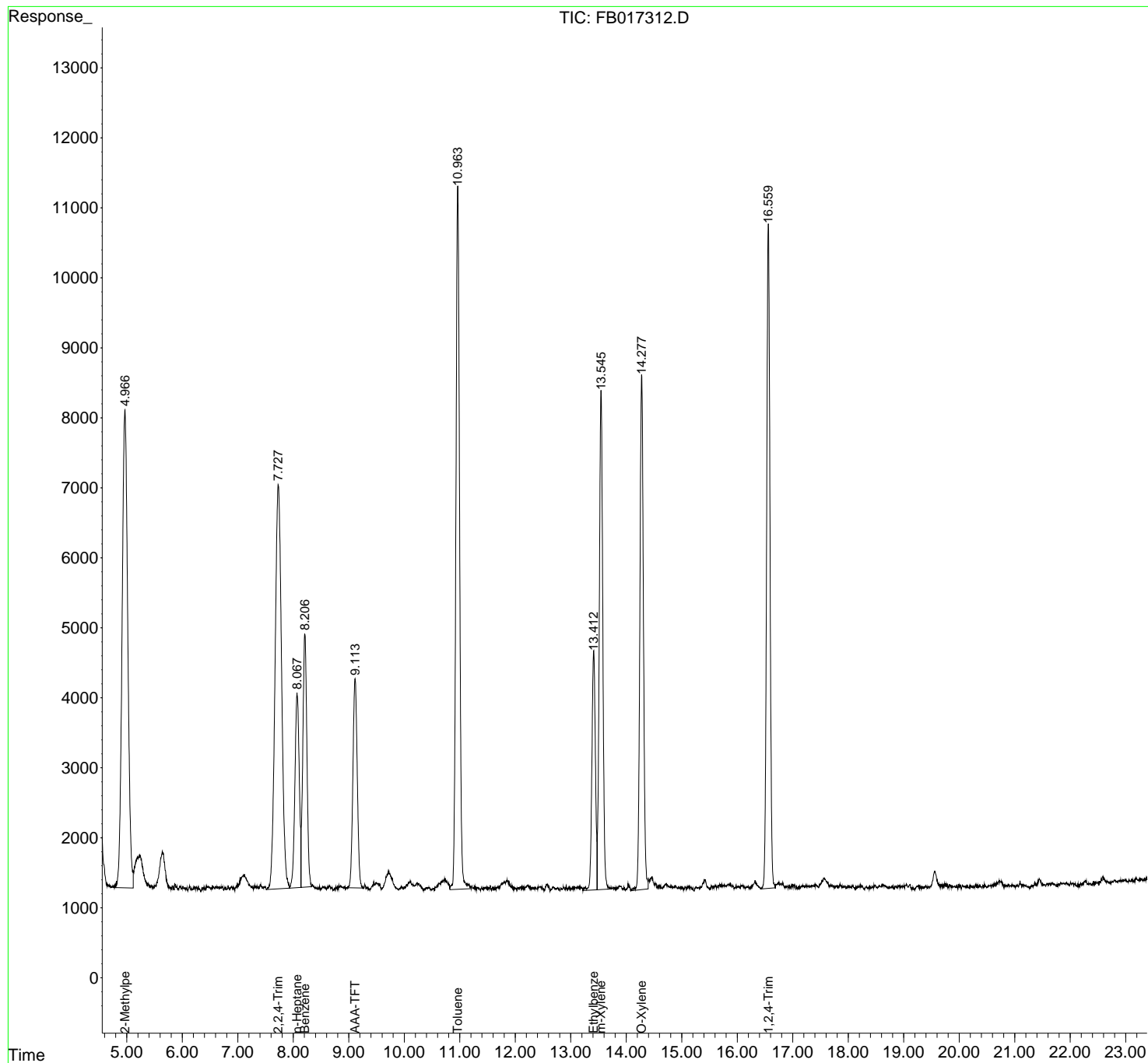
(f)=RT Delta > 1/2 Window

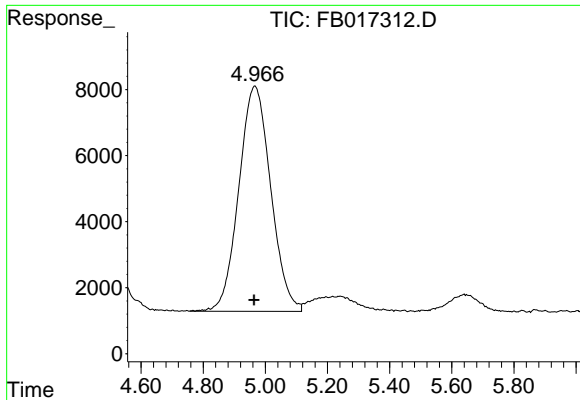
(m)=manual int.

Data Path : Z:\pestpcbsrv\HPCHEM1\FID_B\Data\FB081318\
 Data File : FB017312.D
 Signal(s) : FID2B.CH
 Acq On : 13 Aug 2018 16:13
 Operator : MJ/SJ
 Sample : 20 PPB GRO STD
 Misc :
 ALS Vial : 14 Sample Multiplier: 1

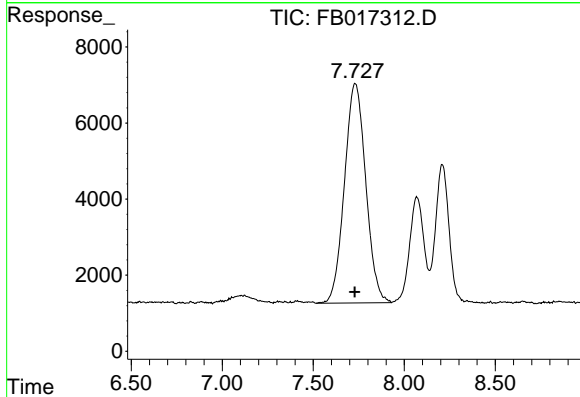
Integration File: Calibration.e
 Quant Time: Aug 14 08:06:52 2018
 Quant Method : Z:\pestpcbsrv\HPCHEM1\FID_B\Method\FB080818.M
 Quant Title :
 QLast Update : Wed Aug 08 11:39:03 2018
 Response via : Initial Calibration
 Integrator: ChemStation

Volume Inj. : 5 g/ml
 Signal Phase : RTX-502.2
 Signal Info : 60mx0.53mmx3.00um

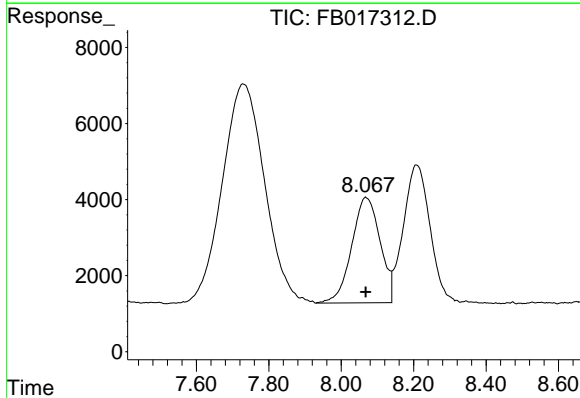




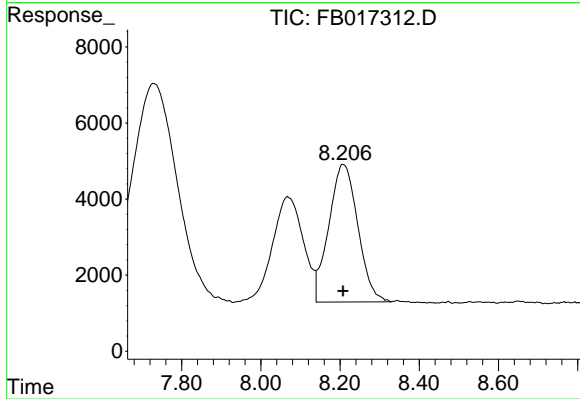
#1 2-Methylpentane
 R.T.: 4.967 min
 Delta R.T.: 0.003 min
 Response: 486406
 Conc: 28.45 ng/ml



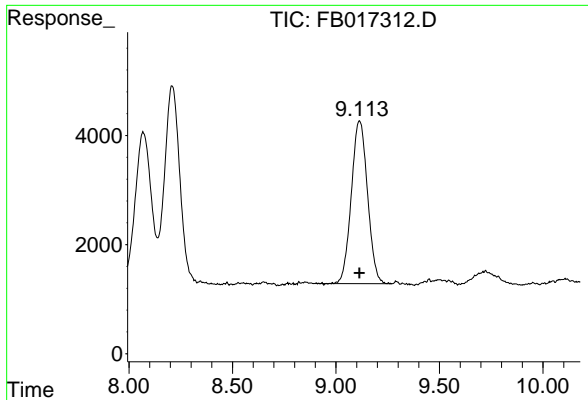
#2 2,2,4-Trimethylpentane
 R.T.: 7.730 min
 Delta R.T.: 0.001 min
 Response: 469348
 Conc: 27.78 ng/ml



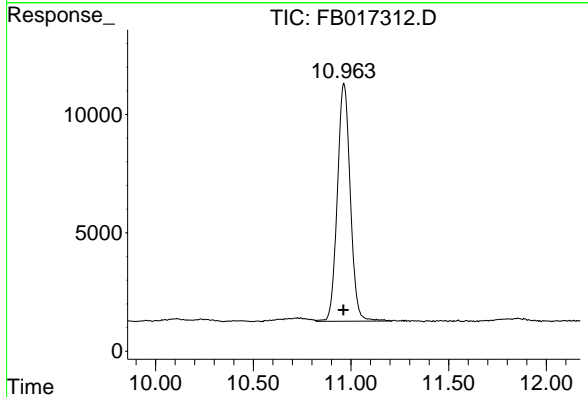
#3 n-Heptane
 R.T.: 8.068 min
 Delta R.T.: 0.000 min
 Response: 150760
 Conc: 9.36 ng/ml



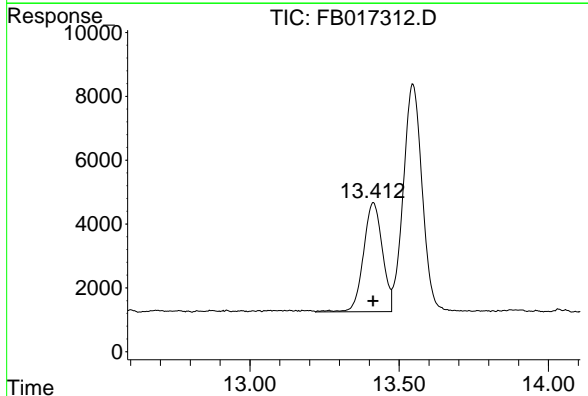
#4 Benzene
 R.T.: 8.208 min
 Delta R.T.: 0.000 min
 Response: 184469
 Conc: 9.10 ng/ml



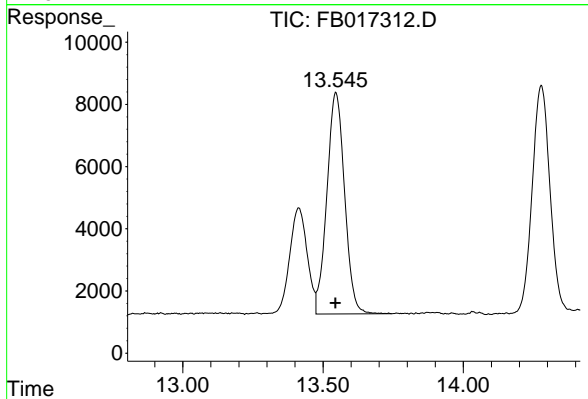
#5 AAA-TFT
 R.T.: 9.114 min
 Delta R.T.: 0.001 min
 Response: 162386
 Conc: 17.33 ng/ml



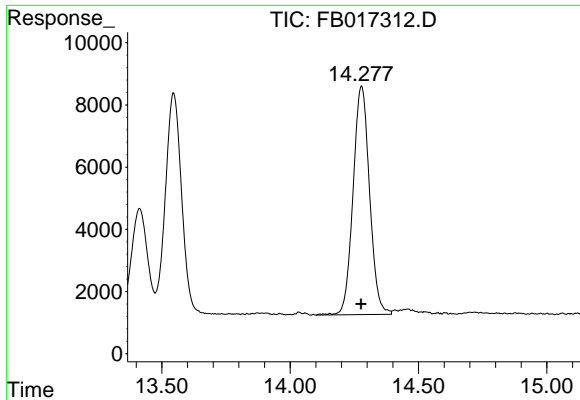
#6 Toluene
 R.T.: 10.964 min
 Delta R.T.: 0.002 min
 Response: 462271
 Conc: 28.04 ng/ml



#7 Ethylbenzene
 R.T.: 13.414 min
 Delta R.T.: 0.002 min
 Response: 149948
 Conc: 8.99 ng/ml

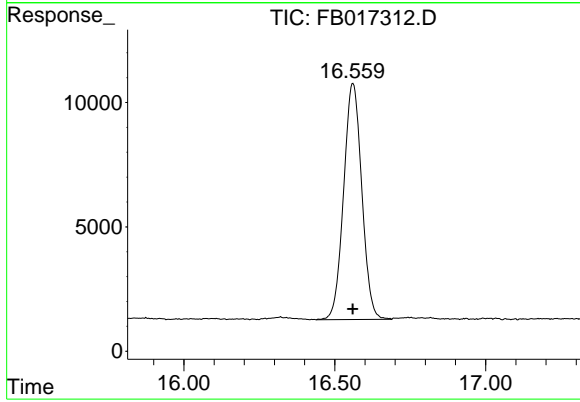


#8 m-Xylene
 R.T.: 13.546 min
 Delta R.T.: 0.002 min
 Response: 313122
 Conc: 16.70 ng/ml



#9 O-Xylene

R.T.: 14.278 min
Delta R.T.: 0.002 min
Response: 327522
Conc: 16.12 ng/ml



#10 1,2,4-Trimethylbenzene

R.T.: 16.560 min
Delta R.T.: 0.001 min
Response: 396752
Conc: 17.72 ng/ml