

Data Path : Z:\pestpcbsrv\HPCHEM1\FID_B\Data\FB081418\
 Data File : FB017348.D
 Signal(s) : FID2B.CH
 Acq On : 14 Aug 2018 14:43
 Operator : MJ/SJ
 Sample : J4447-03MSD
 Misc : 5.01g/5.00mL DI Water
 ALS Vial : 8 Sample Multiplier: 1

Integration File: Calibration.e
 Quant Time: Aug 15 07:51:33 2018
 Quant Method : Z:\pestpcbsrv\HPCHEM1\FID_B\Method\FB080818.M
 Quant Title :
 QLast Update : Wed Aug 08 11:39:03 2018
 Response via : Initial Calibration
 Integrator: ChemStation

Volume Inj. : 5 g/ml
 Signal Phase : RTX-502.2
 Signal Info : 60mx0.53mmx3.00um

Compound	R.T.	Response	Conc Units

System Monitoring Compounds			
5) s AAA-TFT	9.114	178710	19.074 ng/ml
Target Compounds			
1) t 2-Methylpentane	4.965	472761	27.647 ng/ml
2) t 2,2,4-Trimethylpentane	7.730	455237	26.943 ng/ml
3) t n-Heptane	8.070	143690	8.920 ng/ml
4) t Benzene	8.209	180722	8.918 ng/ml
6) t Toluene	10.963	453650	27.522 ng/ml
7) t Ethylbenzene	13.413	151888	9.104 ng/ml
8) t m-Xylene	13.546	323449	17.254 ng/ml
9) t O-Xylene	14.277	337675	16.615 ng/ml
10) t 1,2,4-Trimethylbenzene	16.560	402592	17.976 ng/ml

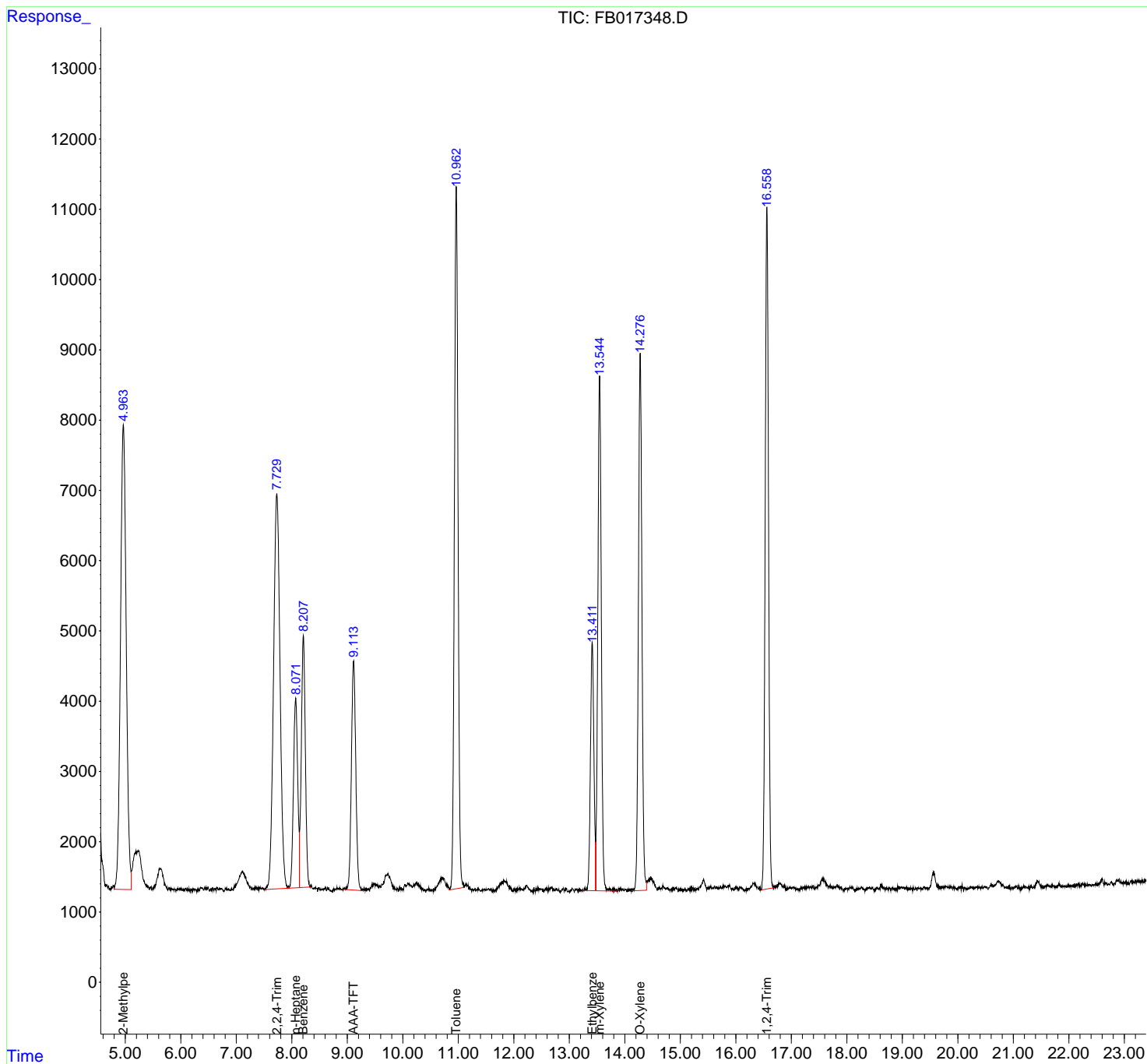
(f)=RT Delta > 1/2 Window

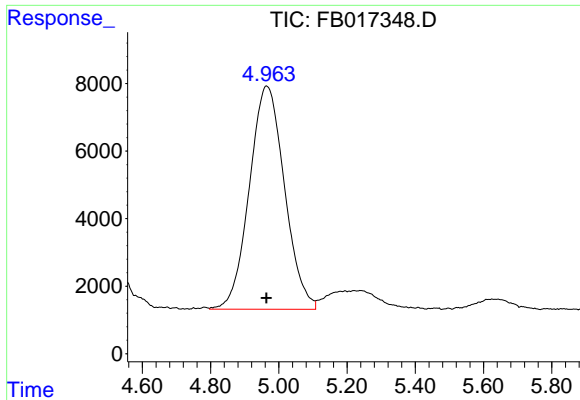
(m)=manual int.

Data Path : Z:\pestpcbsrv\HPCHEM1\FID_B\Data\FB081418\
 Data File : FB017348.D
 Signal(s) : FID2B.CH
 Acq On : 14 Aug 2018 14:43
 Operator : MJ/SJ
 Sample : J4447-03MSD
 Misc : 5.01g/5.00mL DI Water
 ALS Vial : 8 Sample Multiplier: 1

Integration File: Calibration.e
 Quant Time: Aug 15 07:51:33 2018
 Quant Method : Z:\pestpcbsrv\HPCHEM1\FID_B\Method\FB080818.M
 Quant Title :
 QLast Update : Wed Aug 08 11:39:03 2018
 Response via : Initial Calibration
 Integrator: ChemStation

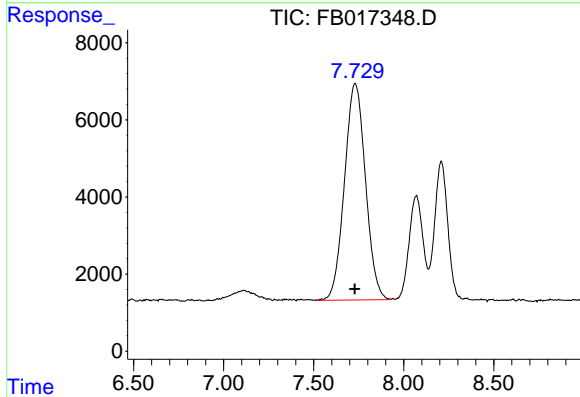
Volume Inj. : 5 g/ml
 Signal Phase : RTX-502.2
 Signal Info : 60mx0.53mmx3.00um





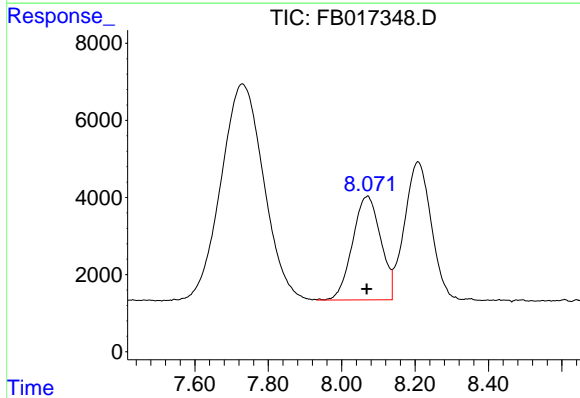
#1 2-Methylpentane

R.T.: 4.965 min
 Delta R.T.: 0.000 min
 Response: 472761
 Conc: 27.65 ng/ml



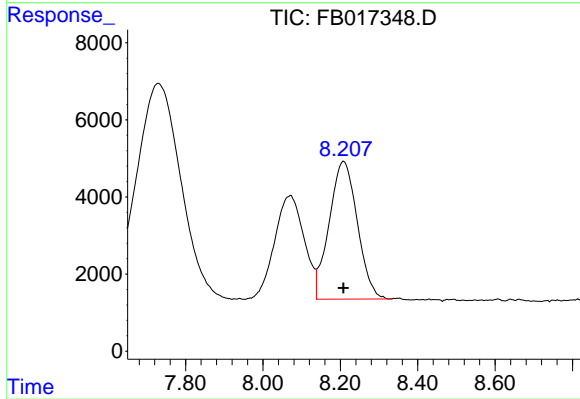
#2 2,2,4-Trimethylpentane

R.T.: 7.730 min
 Delta R.T.: 0.001 min
 Response: 455237
 Conc: 26.94 ng/ml



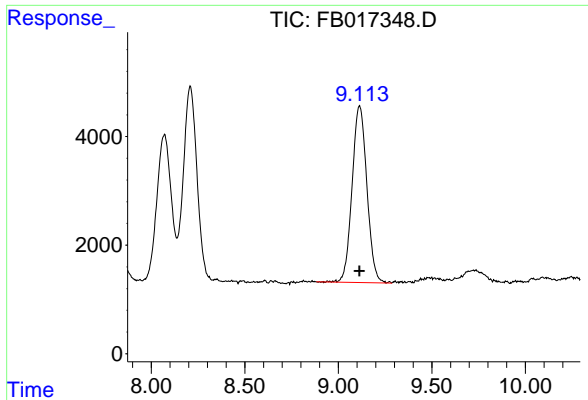
#3 n-Heptane

R.T.: 8.070 min
 Delta R.T.: 0.002 min
 Response: 143690
 Conc: 8.92 ng/ml

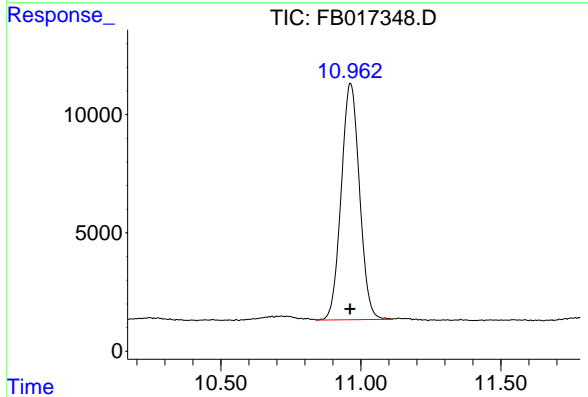


#4 Benzene

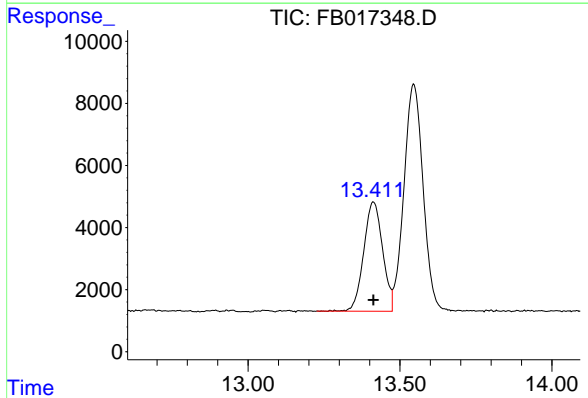
R.T.: 8.209 min
 Delta R.T.: 0.000 min
 Response: 180722
 Conc: 8.92 ng/ml



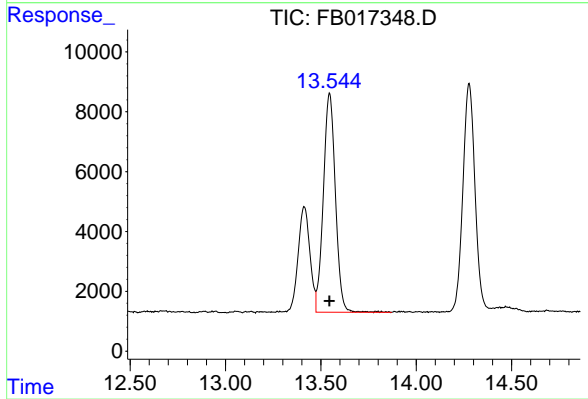
#5 AAA-TFT
 R.T.: 9.114 min
 Delta R.T.: 0.000 min
 Response: 178710
 Conc: 19.07 ng/ml



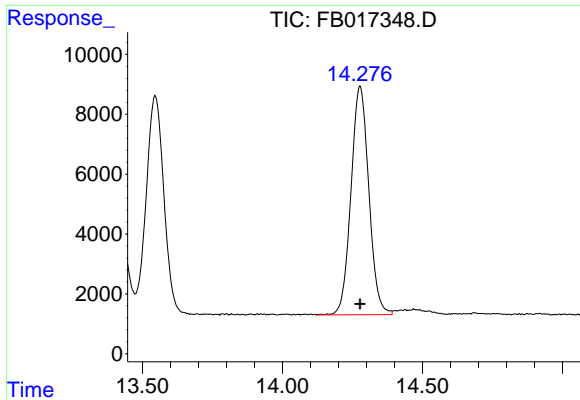
#6 Toluene
 R.T.: 10.963 min
 Delta R.T.: 0.001 min
 Response: 453650
 Conc: 27.52 ng/ml



#7 Ethylbenzene
 R.T.: 13.413 min
 Delta R.T.: 0.000 min
 Response: 151888
 Conc: 9.10 ng/ml

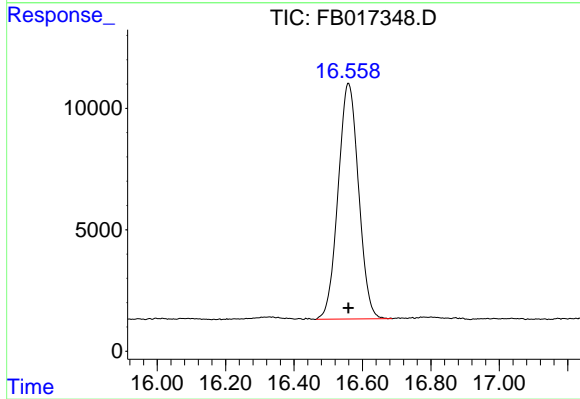


#8 m-Xylene
 R.T.: 13.546 min
 Delta R.T.: 0.001 min
 Response: 323449
 Conc: 17.25 ng/ml



#9 O-Xylene

R.T.: 14.277 min
Delta R.T.: 0.000 min
Response: 337675
Conc: 16.61 ng/ml



#10 1,2,4-Trimethylbenzene

R.T.: 16.560 min
Delta R.T.: 0.000 min
Response: 402592
Conc: 17.98 ng/ml