

Data Path : Z:\pestpcbsrv\HPCHEM1\FID_C\Data\FC010224AL\
Data File : FC065538.D
Signal(s) : FID1A.ch
Acq On : 02 Jan 2024 09:22
Operator : YP/AJ
Sample : I.BLK
Misc :
ALS Vial : 1 Sample Multiplier: 1

Instrument :
FID_C
ClientSampleId :

Integration File: autoint1.e
Quant Time: Jan 03 01:31:41 2024
Quant Method : Z:\pestpcbsrv\HPCHEM1\FID_C\Method\Aliphatic EPH 121823.M
Quant Title : GC Extractables
QLast Update : Mon Dec 18 12:39:13 2023
Response via : Initial Calibration
Integrator: ChemStation

Volume Inj. : 1 u1
Signal Phase : Rxi-1ms
Signal Info : 20M x 0.18mm x 0.18um

Compound	R.T.	Response	Conc Units
----------	------	----------	------------

System Monitoring Compounds

Target Compounds

(f)=RT Delta > 1/2 Window

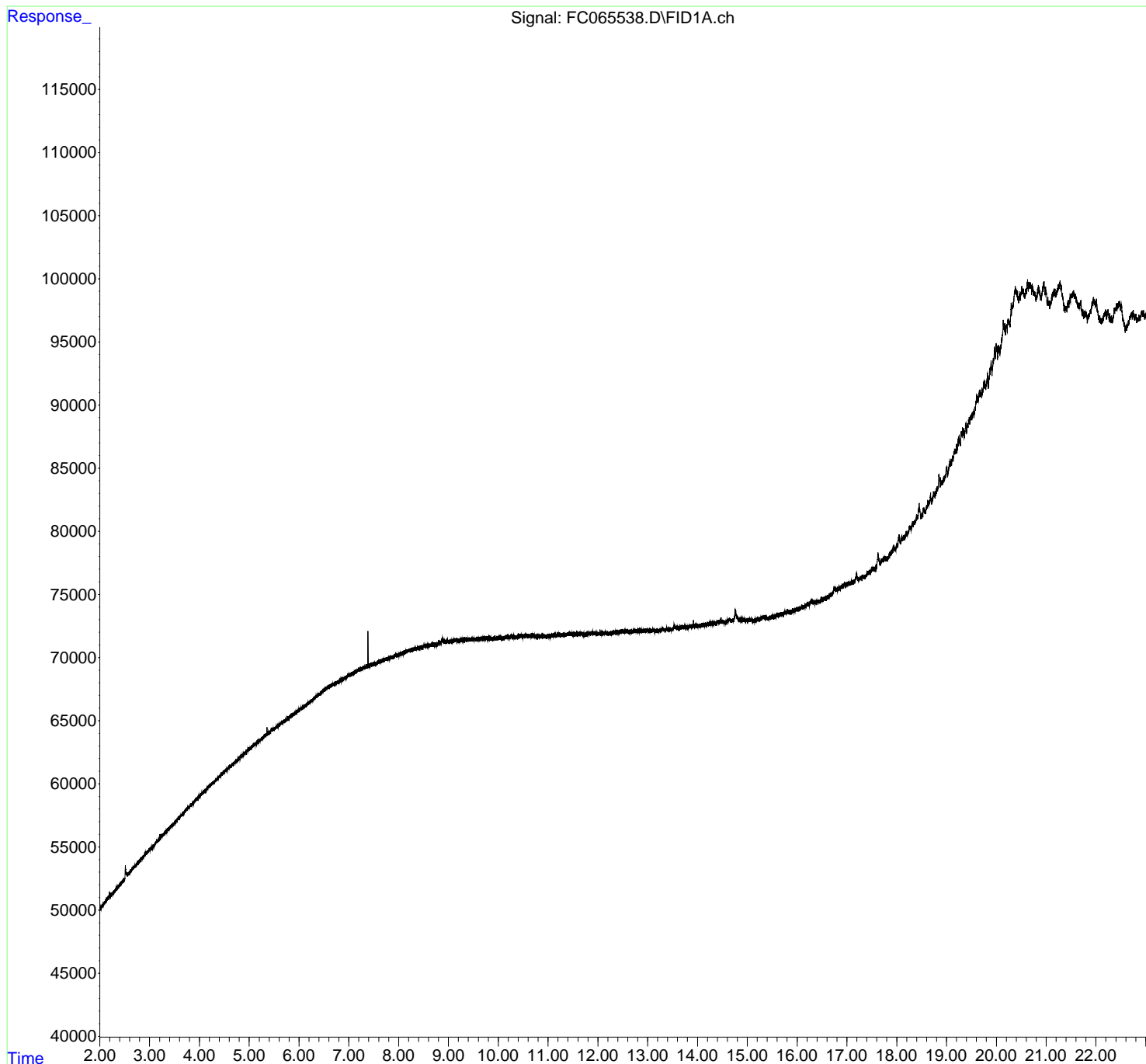
(m)=manual int.

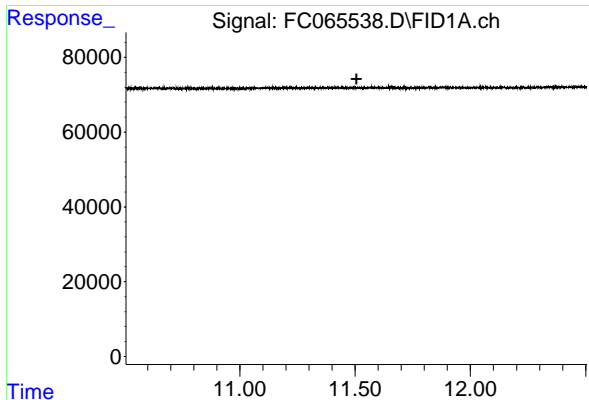
Data Path : Z:\pestpcbsrv\HPCHEM1\FID_C\Data\FC010224AL\
Data File : FC065538.D
Signal(s) : FID1A.ch
Acq On : 02 Jan 2024 09:22
Operator : YP/AJ
Sample : I.BLK
Misc :
ALS Vial : 1 Sample Multiplier: 1

Instrument :
FID_C
ClientSampleId :

Integration File: autoint1.e
Quant Time: Jan 03 01:31:41 2024
Quant Method : Z:\pestpcbsrv\HPCHEM1\FID_C\Method\Aliphatic EPH 121823.M
Quant Title : GC Extractables
QLast Update : Mon Dec 18 12:39:13 2023
Response via : Initial Calibration
Integrator: ChemStation

Volume Inj. : 1 ul
Signal Phase : Rxi-1ms
Signal Info : 20M x 0.18mm x 0.18um

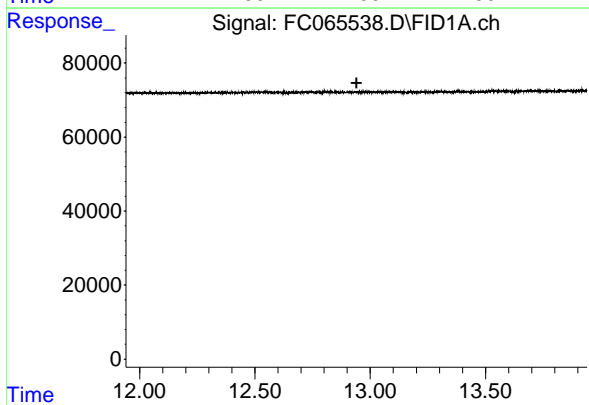




#9 ortho-Terphenyl (SURR)

R.T.: 0.000 min
Exp R.T. : 11.506 min
Response: 0
Conc: N.D.

Instrument :
FID_C
ClientSampleId :



#12 1-chlorooctadecane (SURR)

R.T.: 0.000 min
Exp R.T. : 12.940 min
Response: 0
Conc: N.D.