

Data Path : Z:\pestpcbsrv\HPCHEM1\FID_C\Data\FC010224AL\
 Data File : FC065547.D
 Signal(s) : FID1A.ch
 Acq On : 02 Jan 2024 19:25
 Operator : YP/AJ
 Sample : I.BLK
 Misc :
 ALS Vial : 1 Sample Multiplier: 1

Instrument :
 FID_C
 ClientSampleId :

Integration File: autoint1.e
 Quant Time: Jan 03 01:32:53 2024
 Quant Method : Z:\pestpcbsrv\HPCHEM1\FID_C\Method\Aliphatic EPH 121823.M
 Quant Title : GC Extractables
 QLast Update : Mon Dec 18 12:39:13 2023
 Response via : Initial Calibration
 Integrator: ChemStation

Volume Inj. : 1 ul
 Signal Phase : Rxi-1ms
 Signal Info : 20M x 0.18mm x 0.18um

Compound	R.T.	Response	Conc Units

System Monitoring Compounds			
Target Compounds			
19) T n-Tetratriacontane (C34)	19.228	44388	0.268 ug/ml
20) T n-Hexatriacontane (C36)	19.966	48710	0.302 ug/ml
21) T n-Octatriacontane (C38)	20.683	409256	2.580 ug/ml
22) T n-Tetracontane (C40)	21.557	146636	0.921 ug/ml

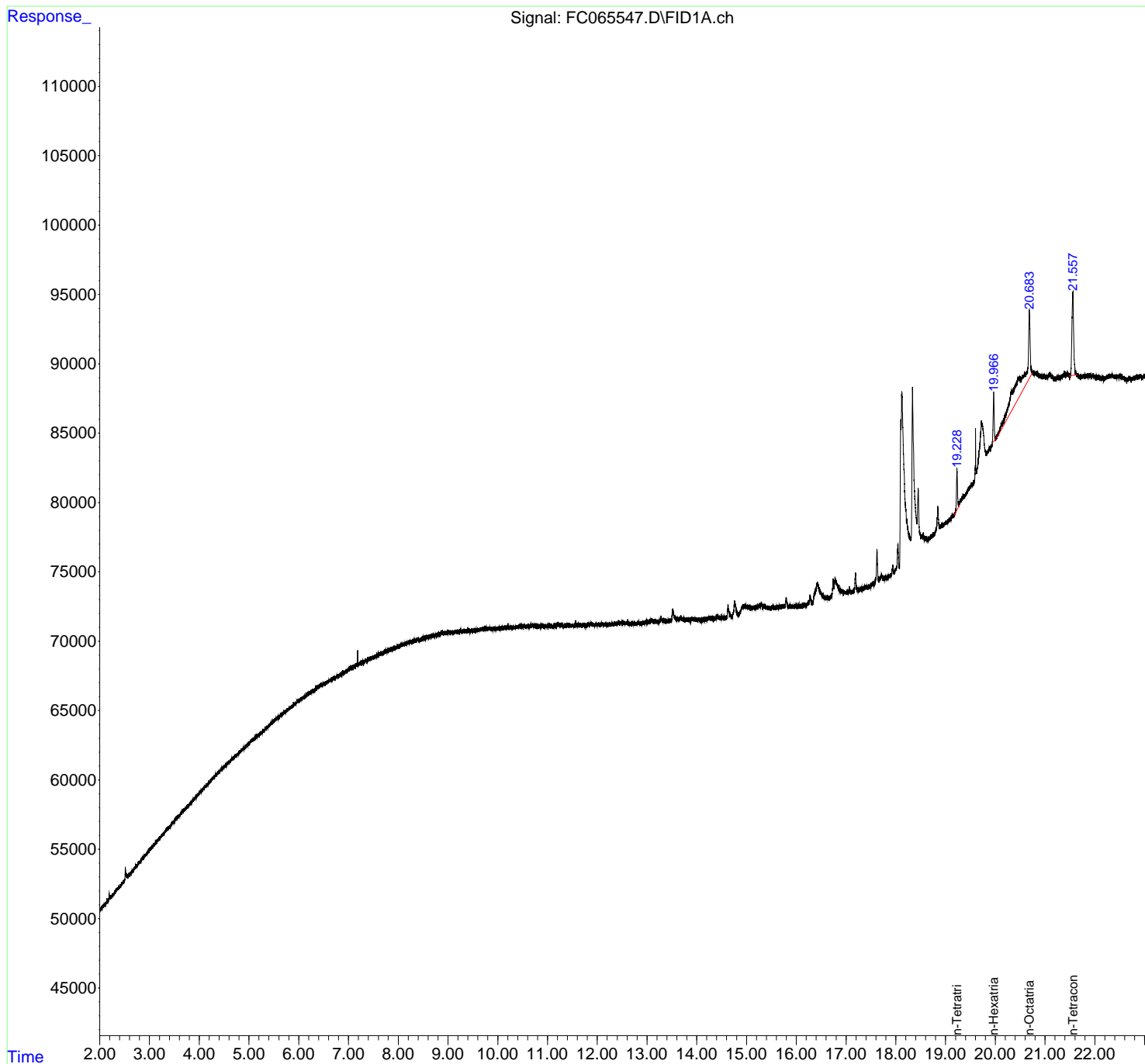
(f)=RT Delta > 1/2 Window (m)=manual int.

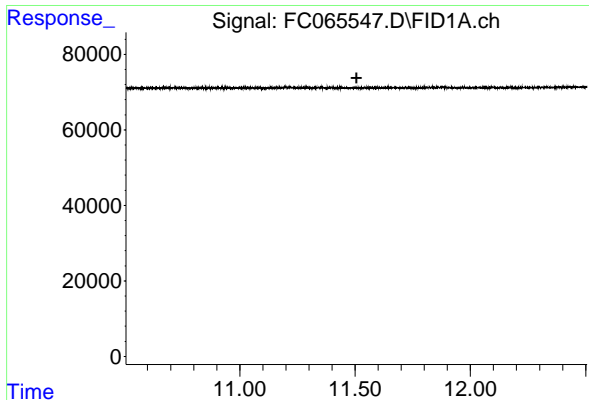
Data Path : Z:\pestpcbsrv\HPCHEM1\FID_C\Data\FC010224AL\
 Data File : FC065547.D
 Signal(s) : FID1A.ch
 Acq On : 02 Jan 2024 19:25
 Operator : YP/AJ
 Sample : I.BLK
 Misc :
 ALS Vial : 1 Sample Multiplier: 1

Instrument :
 FID_C
 ClientSampleId :

Integration File: autoint1.e
 Quant Time: Jan 03 01:32:53 2024
 Quant Method : Z:\pestpcbsrv\HPCHEM1\FID_C\Method\Aliphatic EPH 121823.M
 Quant Title : GC Extractables
 QLast Update : Mon Dec 18 12:39:13 2023
 Response via : Initial Calibration
 Integrator: ChemStation

Volume Inj. : 1 ul
 Signal Phase : Rxi-1ms
 Signal Info : 20M x 0.18mm x 0.18um

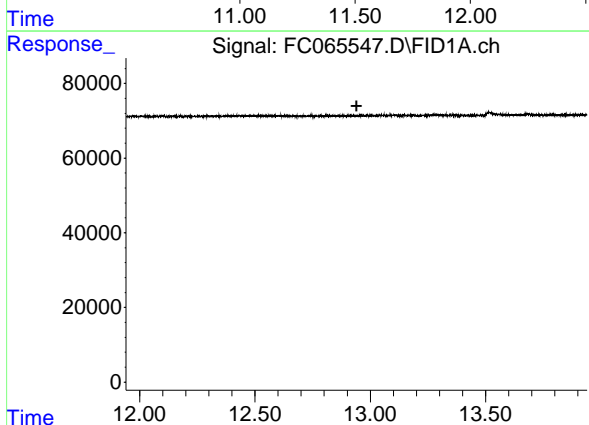




#9 ortho-Terphenyl (SURR)

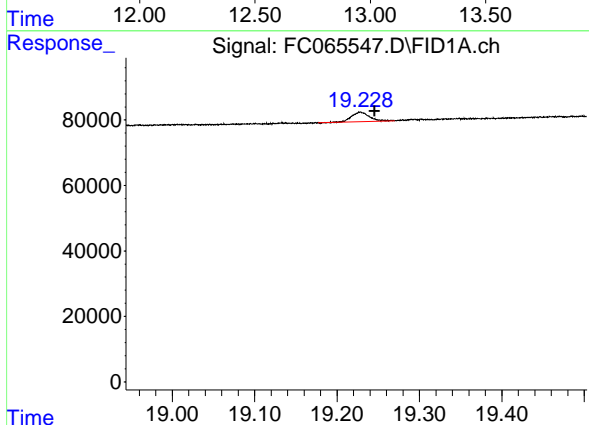
R.T.: 0.000 min
 Exp R.T.: 11.506 min
 Response: 0
 Conc: N.D.

Instrument : FID_C
 ClientSampleId :



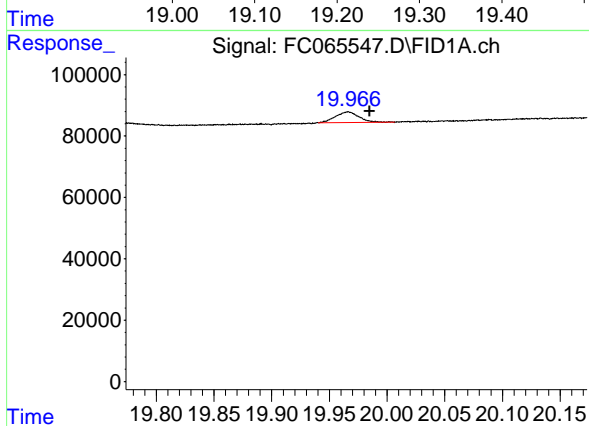
#12 1-chlorooctadecane (SURR)

R.T.: 0.000 min
 Exp R.T.: 12.940 min
 Response: 0
 Conc: N.D.



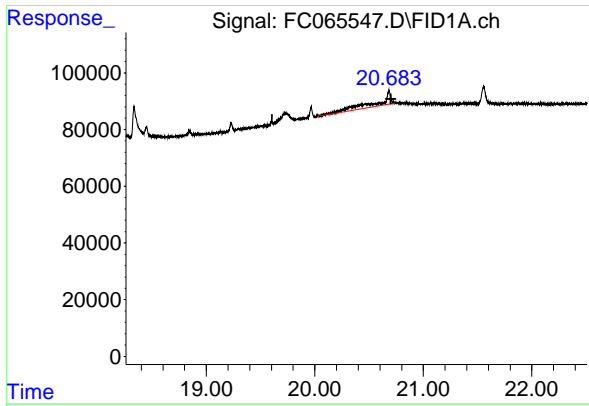
#19 n-Tetratriacontane (C34)

R.T.: 19.228 min
 Delta R.T.: -0.017 min
 Response: 44388
 Conc: 0.27 ug/ml



#20 n-Hexatriacontane (C36)

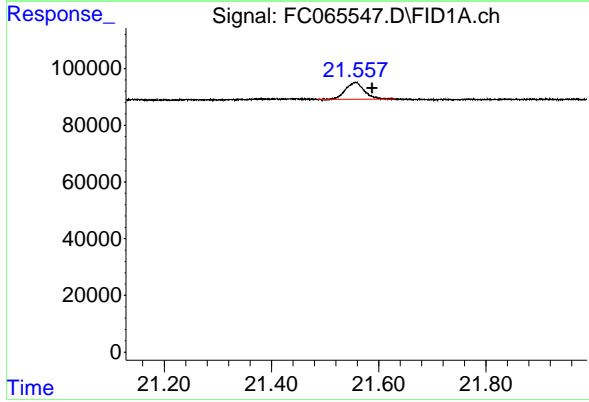
R.T.: 19.966 min
 Delta R.T.: -0.018 min
 Response: 48710
 Conc: 0.30 ug/ml



#21 n-Octatriacontane (C38)

R.T.: 20.683 min
Delta R.T.: -0.020 min
Response: 409256
Conc: 2.58 ug/ml

Instrument :
FID_C
ClientSampleId :



#22 n-Tetracontane (C40)

R.T.: 21.557 min
Delta R.T.: -0.030 min
Response: 146636
Conc: 0.92 ug/ml