

Data Path : Z:\pestpcbsrv\HPCHEM1\FID_C\Data\FC010419AL\
 Data File : FC038474.D
 Signal(s) : FID1A.CH
 Acq On : 04 Jan 2019 18:40
 Operator : AJ\SJ
 Sample : K1025-02
 Misc :
 ALS Vial : 13 Sample Multiplier: 1

Instrument :
 FID_C
 ClientSampled :
 B-2

Manual Integrations
 APPROVED

Sohil
 1/7/2019 10:32:34 AM

Integration File: autoint1.e
 Quant Time: Jan 05 00:10:01 2019
 Quant Method : Z:\pestpcbsrv\HPCHEM1\FID_C\Method\Alaphatic EPH 121018.M
 Quant Title : GC Extractables
 QLast Update : Sat Dec 15 05:55:02 2018
 Response via : Initial Calibration
 Integrator: ChemStation 6890 Scale Mode: Large solvent peaks clipped

Volume Inj. : 1 ul
 Signal Phase : Rxi-1ms
 Signal Info : 20M x 0.18mm x 0.18um

Compound	R.T.	Response	Conc Units

System Monitoring Compounds			
9) S ortho-Terphenyl (SURR)	11.269	3044813	23.356 ug/ml
Spiked Amount	50.000	Recovery	= 46.71%
12) S 1-chlorooctadecane (S...	12.714	2340771	23.217 ug/mlm
Spiked Amount	50.000	Recovery	= 46.43%

Target Compounds

(f)=RT Delta > 1/2 Window

(m)=manual int.

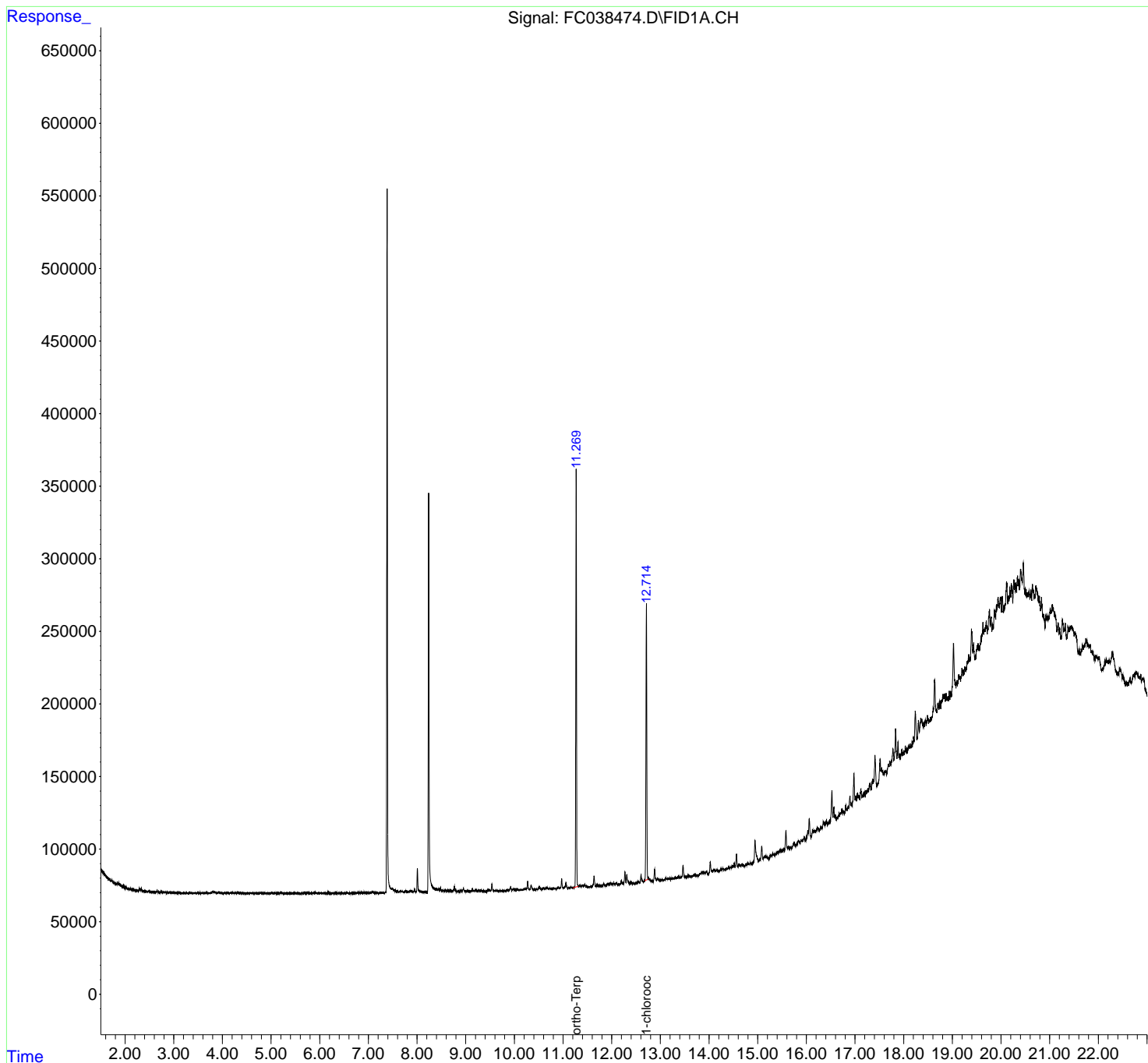
Data Path : Z:\pestpcbsrv\HPCHEM1\FID_C\Data\FC010419AL\
 Data File : FC038474.D
 Signal(s) : FID1A.CH
 Acq On : 04 Jan 2019 18:40
 Operator : AJ\SJ
 Sample : K1025-02
 Misc :
 ALS Vial : 13 Sample Multiplier: 1

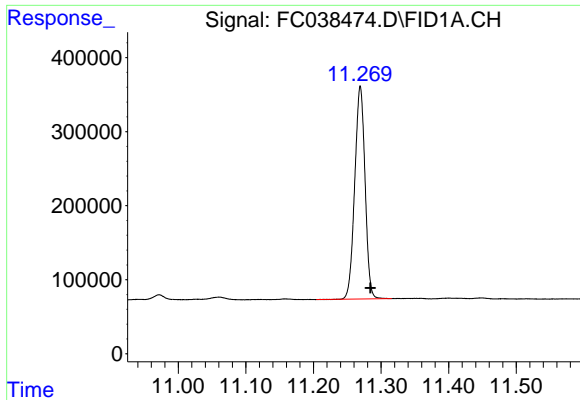
Instrument :
 FID_C
 ClientSampled :
 B-2

Manual Integrations
APPROVED
 Sohil
 1/7/2019 10:32:34 AM

Integration File: autoint1.e
 Quant Time: Jan 05 00:10:01 2019
 Quant Method : Z:\pestpcbsrv\HPCHEM1\FID_C\Method\Alaphatic EPH 121018.M
 Quant Title : GC Extractables
 QLast Update : Sat Dec 15 05:55:02 2018
 Response via : Initial Calibration
 Integrator: ChemStation 6890 Scale Mode: Large solvent peaks clipped

Volume Inj. : 1 ul
 Signal Phase : Rxi-1ms
 Signal Info : 20M x 0.18mm x 0.18um





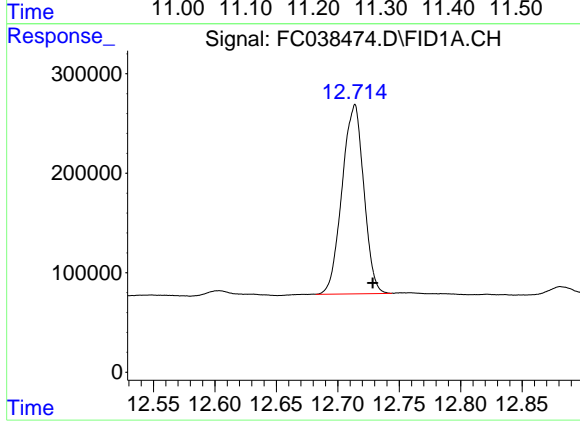
#9 ortho-Terphenyl (SURR)

R.T.: 11.269 min
Delta R.T.: -0.015 min
Response: 3044813
Conc: 23.36 ug/ml

Instrument :
FID_C
ClientSampled :
B-2

Manual Integrations
APPROVED

Sohil
1/7/2019 10:32:34 AM



#12 1-chlorooctadecane (SURR)

R.T.: 12.714 min
Delta R.T.: -0.015 min
Response: 2340771
Conc: 23.22 ug/ml m