

Data Path : Z:\pestpcbsrv\HPCHEM1\FID_C\Data\FC010523AL\
 Data File : FC062574.D
 Signal(s) : FID1A.ch
 Acq On : 04 Jan 2023 23:56
 Operator : YP/AJ
 Sample : 20 PPM ALIPHATIC HC STD ICV
 Misc :
 ALS Vial : 16 Sample Multiplier: 1

Instrument :
 FID_C
 ClientSampleId :

Integration File: autoint1.e
 Quant Time: Jan 05 04:56:39 2023
 Quant Method : Z:\pestpcbsrv\HPCHEM1\FID_C\Method\Aliphatic EPH 010523.M
 Quant Title : GC Extractables
 QLast Update : Thu Jan 05 04:54:00 2023
 Response via : Initial Calibration
 Integrator: ChemStation

Volume Inj. : 1 ul
 Signal Phase : Rxi-1ms
 Signal Info : 20M x 0.18mm x 0.18um

Compound	R.T.	Response	Conc Units

System Monitoring Compounds			
9) S ortho-Terphenyl (SURR)	11.559	2866064	20.286 ug/ml
Spiked Amount	50.000	Recovery	= 40.57%
12) S 1-chlorooctadecane (S...	12.997	2145610	20.369 ug/ml
Spiked Amount	50.000	Recovery	= 40.74%
Target Compounds			
1) T n-Nonane (C9)	3.318	2722048	20.356 ug/ml
2) T n-Decane (C10)	4.384	2652460	20.452 ug/ml
3) T A~Naphthalene (C11.7)	5.969	2999601	20.412 ug/ml
4) T n-Dodecane (C12)	6.404	2648058	20.604 ug/ml
5) T A~2-methylnaphthalene...	7.026	2791352	20.417 ug/ml
6) T n-Tetradecane (C14)	8.200	2613844	20.305 ug/ml
7) T n-Hexadecane (C16)	9.803	2625332	20.329 ug/ml
8) T n-Octadecane (C18)	11.246	2628670	20.299 ug/ml
10) T n-Eicosane (C20)	12.554	2504062	20.290 ug/ml
11) T n-Heneicosane (C21)	13.165	2489057	20.308 ug/ml
13) T n-Docosane (C22)	13.751	2422343	20.262 ug/ml
14) T n-Tetracosane (C24)	14.853	2360156	20.266 ug/ml
15) T n-Hexacosane (C26)	15.871	2274111	20.243 ug/ml
16) T n-Octacosane (C28)	16.818	2205796	20.089 ug/ml
17) T n-Tricontane (C30)	17.704	2172960	20.065 ug/ml
18) T n-Dotriacontane (C32)	18.537	2177246	19.943 ug/ml
19) T n-Tetratriacontane (C34)	19.318	2173429	19.991 ug/ml
20) T n-Hexatriacontane (C36)	20.053	2136285	19.205 ug/ml
21) T n-Octatriacontane (C38)	20.788	2112019	19.943 ug/ml
22) T n-Tetracontane (C40)	21.693	2134752	20.046 ug/ml

(f)=RT Delta > 1/2 Window

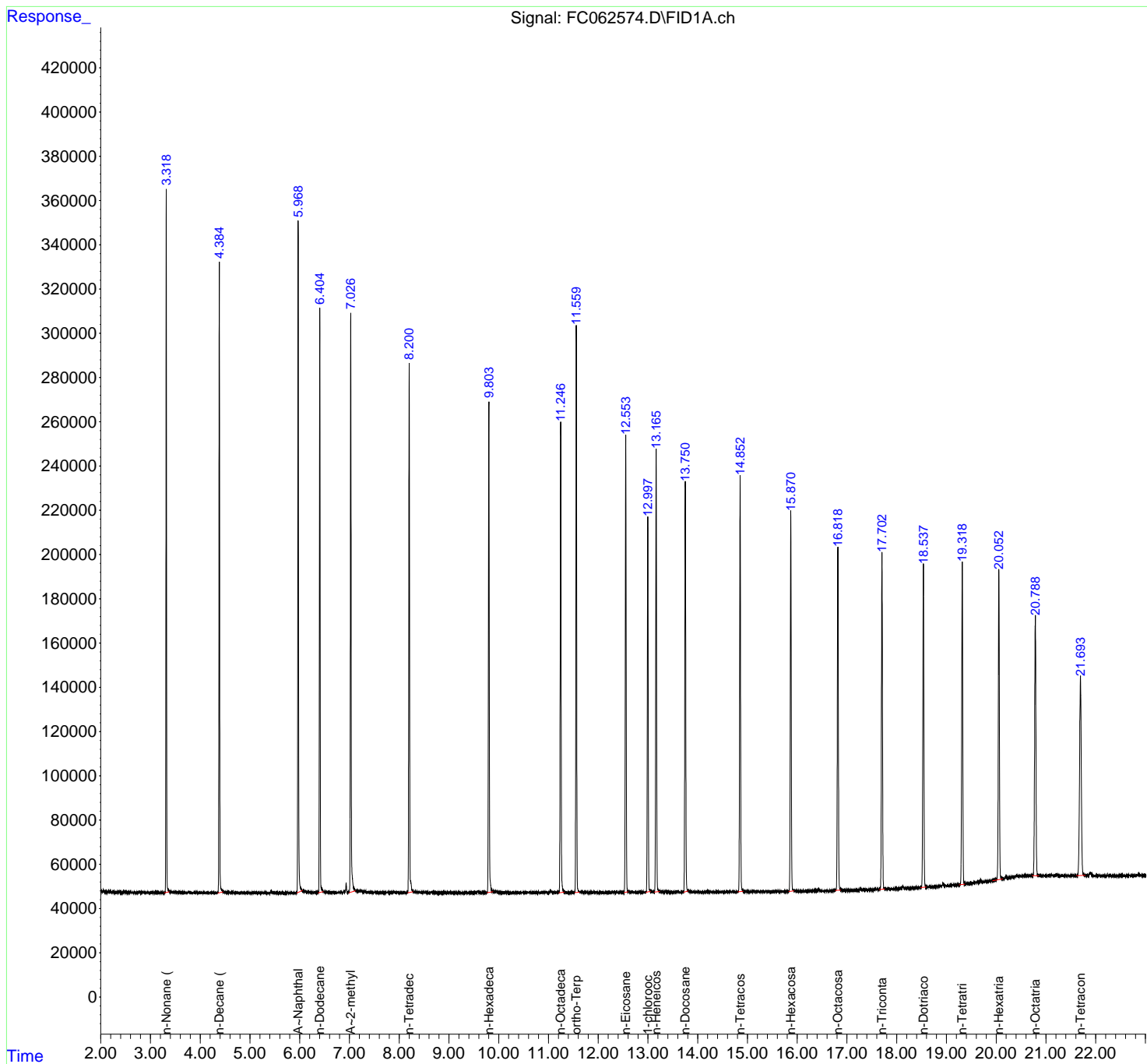
(m)=manual int.

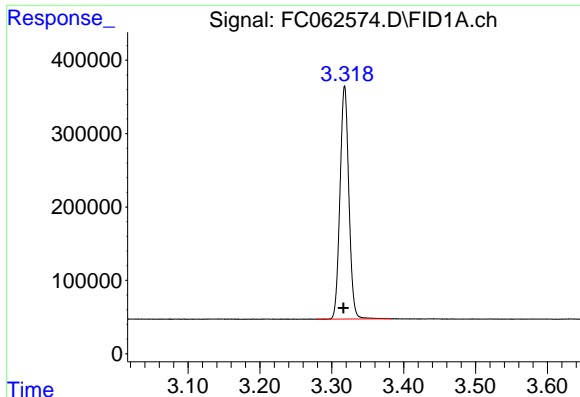
Data Path : Z:\pestpcbsrv\HPCHEM1\FID_C\Data\FC010523AL\
 Data File : FC062574.D
 Signal(s) : FID1A.ch
 Acq On : 04 Jan 2023 23:56
 Operator : YP/AJ
 Sample : 20 PPM ALIPHATIC HC STD ICV
 Misc :
 ALS Vial : 16 Sample Multiplier: 1

Instrument :
 FID_C
 ClientSampleId :

Integration File: autoint1.e
 Quant Time: Jan 05 04:56:39 2023
 Quant Method : Z:\pestpcbsrv\HPCHEM1\FID_C\Method\Aliphatic EPH 010523.M
 Quant Title : GC Extractables
 QLast Update : Thu Jan 05 04:54:00 2023
 Response via : Initial Calibration
 Integrator: ChemStation

Volume Inj. : 1 ul
 Signal Phase : Rxi-1ms
 Signal Info : 20M x 0.18mm x 0.18um

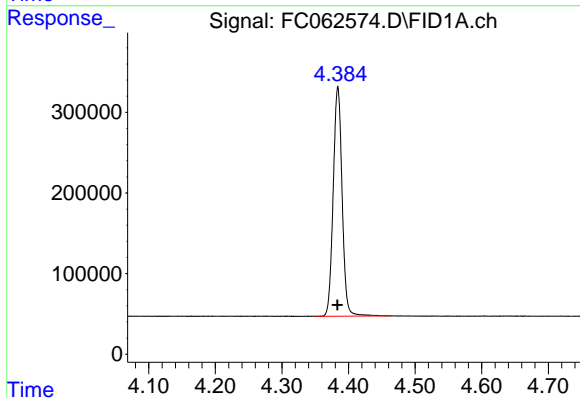




#1 n-Nonane (C9)

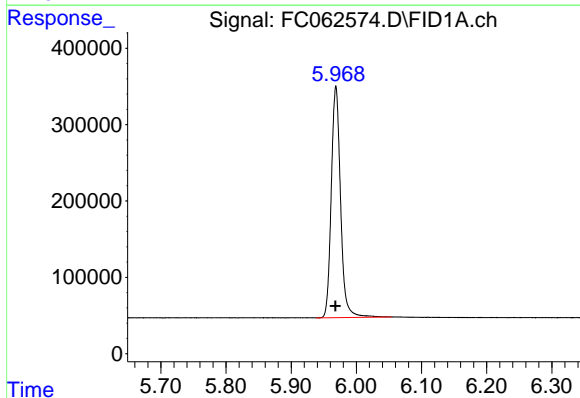
R.T.: 3.318 min
Delta R.T.: 0.002 min
Response: 2722048
Conc: 20.36 ug/ml

Instrument :
FID_C
ClientSampleId :



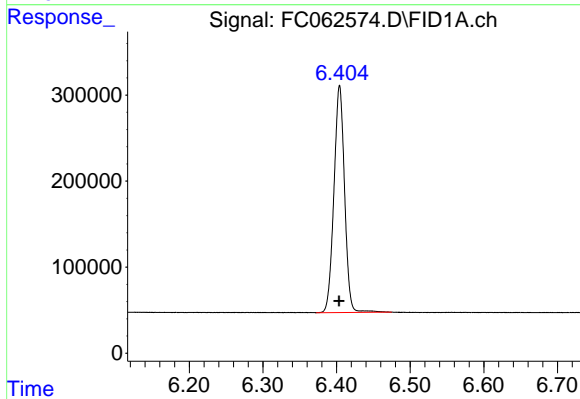
#2 n-Decane (C10)

R.T.: 4.384 min
Delta R.T.: 0.000 min
Response: 2652460
Conc: 20.45 ug/ml



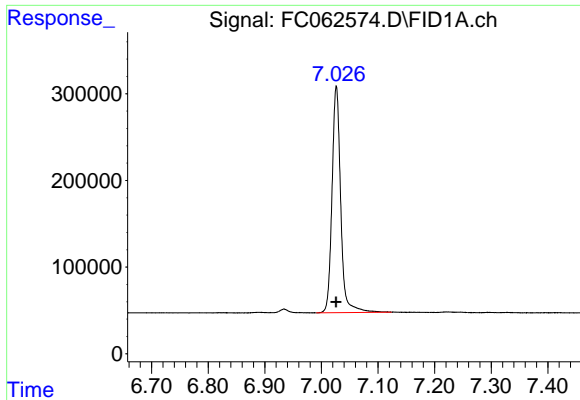
#3 A~Naphthalene (C11.7)

R.T.: 5.969 min
Delta R.T.: 0.000 min
Response: 2999601
Conc: 20.41 ug/ml



#4 n-Dodecane (C12)

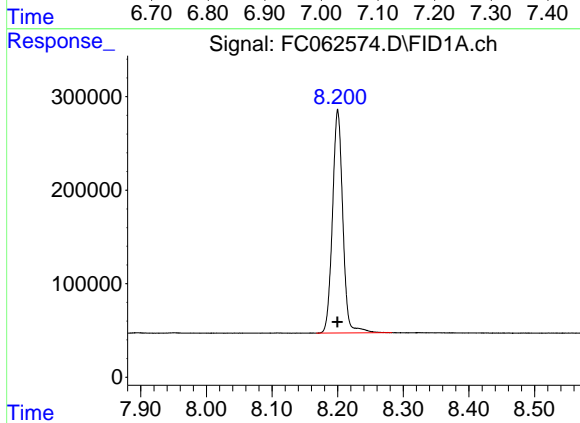
R.T.: 6.404 min
Delta R.T.: 0.000 min
Response: 2648058
Conc: 20.60 ug/ml



#5 A~2-methylnaphthalene (C12.89)

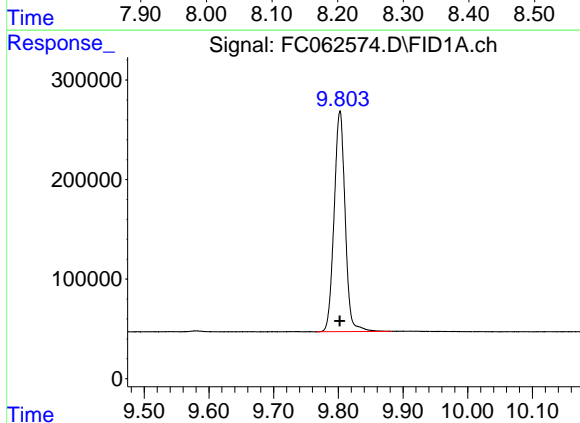
R.T.: 7.026 min
 Delta R.T.: 0.000 min
 Response: 2791352
 Conc: 20.42 ug/ml

Instrument :
 FID_C
 ClientSampleId :



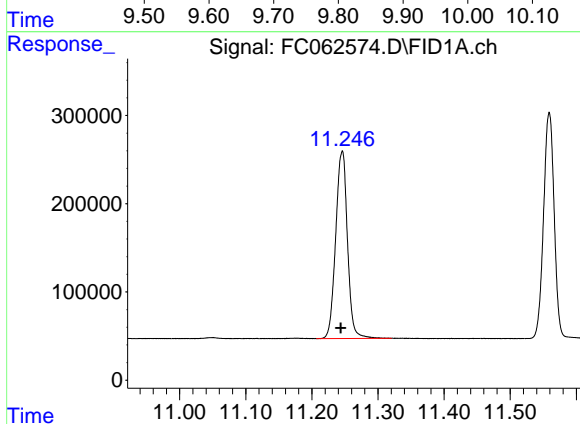
#6 n-Tetradecane (C14)

R.T.: 8.200 min
 Delta R.T.: 0.000 min
 Response: 2613844
 Conc: 20.31 ug/ml



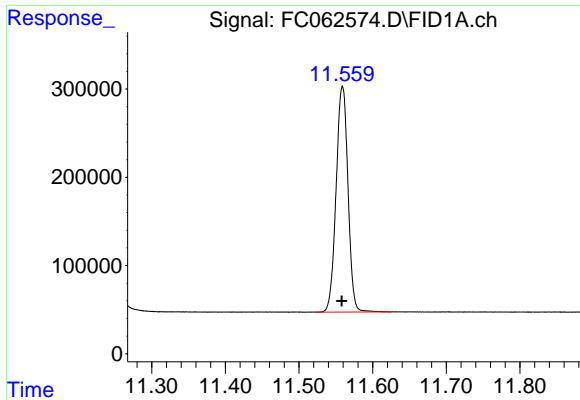
#7 n-Hexadecane (C16)

R.T.: 9.803 min
 Delta R.T.: 0.000 min
 Response: 2625332
 Conc: 20.33 ug/ml



#8 n-Octadecane (C18)

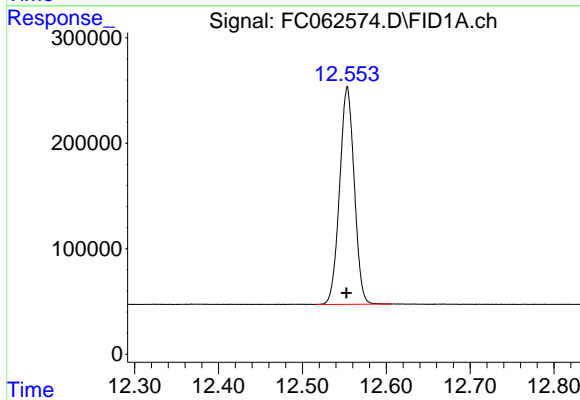
R.T.: 11.246 min
 Delta R.T.: 0.002 min
 Response: 2628670
 Conc: 20.30 ug/ml



#9 ortho-Terphenyl (SURR)

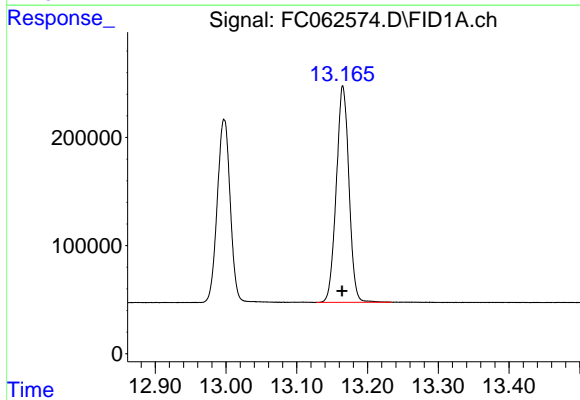
R.T.: 11.559 min
 Delta R.T.: 0.000 min
 Response: 2866064
 Conc: 20.29 ug/ml

Instrument :
 FID_C
 ClientSampleId :



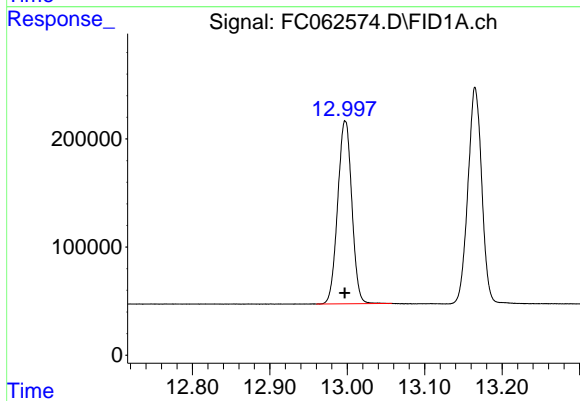
#10 n-Eicosane (C20)

R.T.: 12.554 min
 Delta R.T.: 0.001 min
 Response: 2504062
 Conc: 20.29 ug/ml



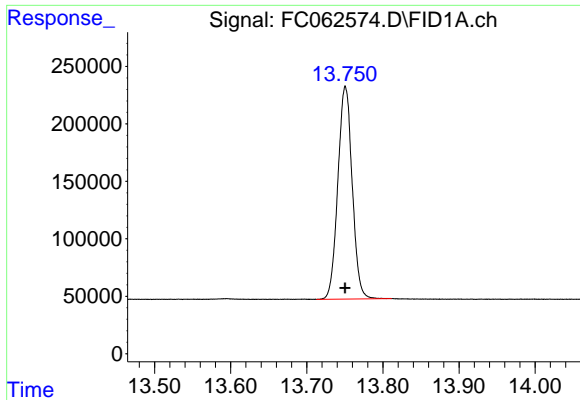
#11 n-Heneicosane (C21)

R.T.: 13.165 min
 Delta R.T.: 0.000 min
 Response: 2489057
 Conc: 20.31 ug/ml



#12 1-chlorooctadecane (SURR)

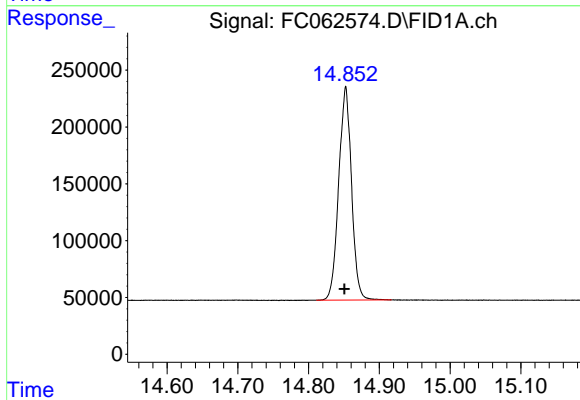
R.T.: 12.997 min
 Delta R.T.: 0.000 min
 Response: 2145610
 Conc: 20.37 ug/ml



#13 n-Docosane (C22)

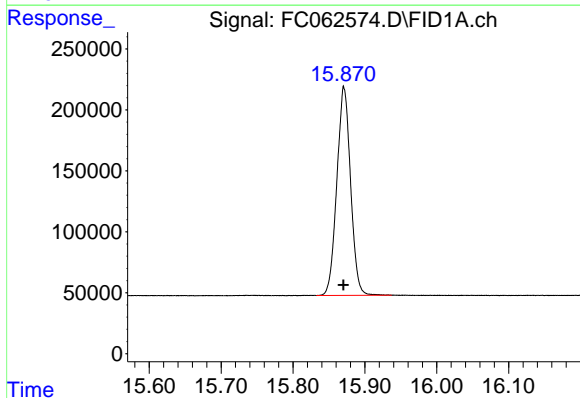
R.T.: 13.751 min
 Delta R.T.: 0.000 min
 Response: 2422343
 Conc: 20.26 ug/ml

Instrument :
 FID_C
 ClientSampleId :



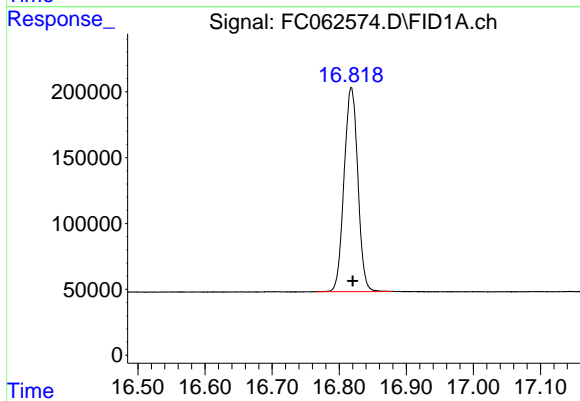
#14 n-Tetracosane (C24)

R.T.: 14.853 min
 Delta R.T.: 0.002 min
 Response: 2360156
 Conc: 20.27 ug/ml



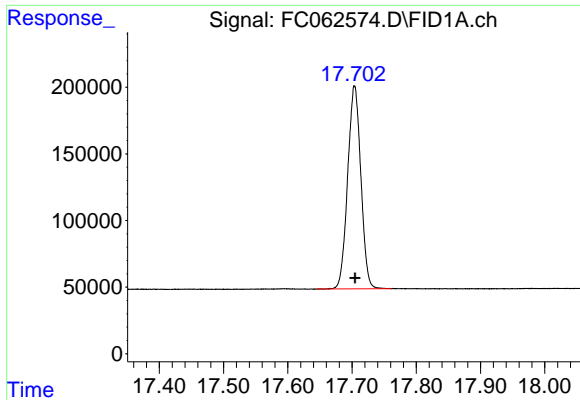
#15 n-Hexacosane (C26)

R.T.: 15.871 min
 Delta R.T.: 0.000 min
 Response: 2274111
 Conc: 20.24 ug/ml



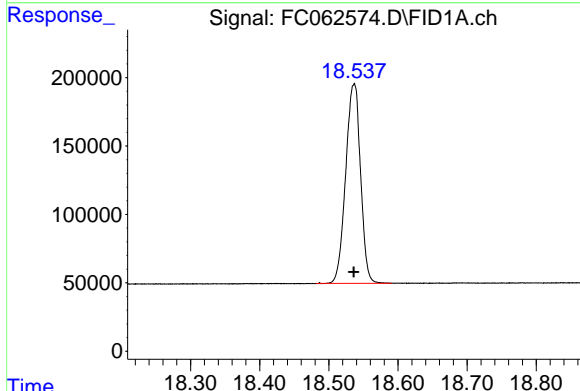
#16 n-Octacosane (C28)

R.T.: 16.818 min
 Delta R.T.: -0.002 min
 Response: 2205796
 Conc: 20.09 ug/ml

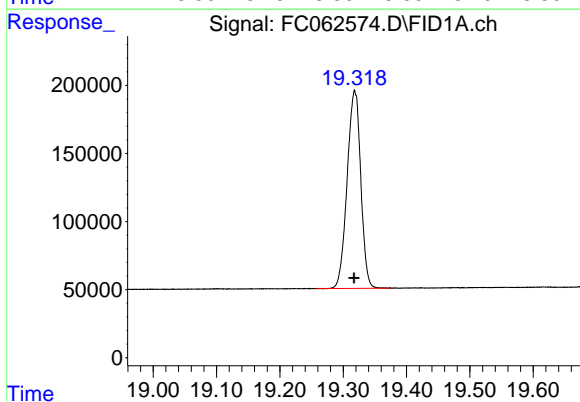


#17 n-Tricontane (C30)
 R.T.: 17.704 min
 Delta R.T.: -0.001 min
 Response: 2172960
 Conc: 20.06 ug/ml

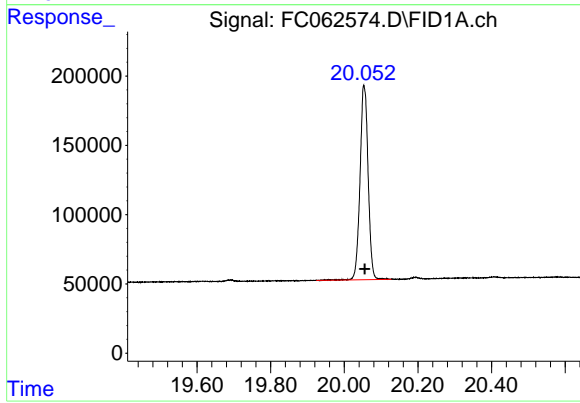
Instrument :
 FID_C
 ClientSampleId :



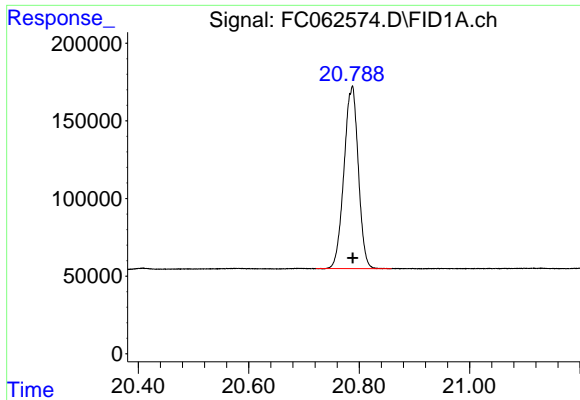
#18 n-Dotriacontane (C32)
 R.T.: 18.537 min
 Delta R.T.: 0.000 min
 Response: 2177246
 Conc: 19.94 ug/ml



#19 n-Tetratriacontane (C34)
 R.T.: 19.318 min
 Delta R.T.: 0.000 min
 Response: 2173429
 Conc: 19.99 ug/ml



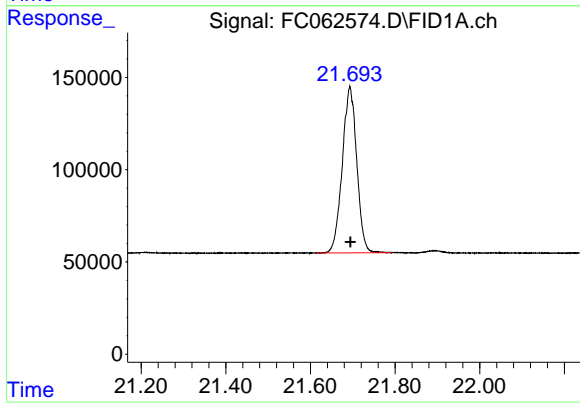
#20 n-Hexatriacontane (C36)
 R.T.: 20.053 min
 Delta R.T.: -0.002 min
 Response: 2136285
 Conc: 19.21 ug/ml



#21 n-Octatriacontane (C38)

R.T.: 20.788 min
Delta R.T.: 0.000 min
Response: 2112019
Conc: 19.94 ug/ml

Instrument :
FID_C
ClientSampleId :



#22 n-Tetracontane (C40)

R.T.: 21.693 min
Delta R.T.: -0.002 min
Response: 2134752
Conc: 20.05 ug/ml