

Data Path : Z:\pestpcbsrv\HPCHEM1\FID_C\Data\FC010621AL\
 Data File : FC051587.D
 Signal(s) : FID1A.CH
 Acq On : 06 Jan 2021 19:15
 Operator : DD\AJ
 Sample : M1004-09
 Misc :
 ALS Vial : 9 Sample Multiplier: 1

Instrument :
 FID_C
 ClientSampleId :

Integration File: autoint1.e
 Quant Time: Jan 07 00:50:45 2021
 Quant Method : Z:\pestpcbsrv\HPCHEM1\FID_C\Method\Alaphatic EPH 122120.M
 Quant Title : GC Extractables
 QLast Update : Tue Dec 22 00:33:00 2020
 Response via : Initial Calibration
 Integrator: ChemStation 6890 Scale Mode: Large solvent peaks clipped

Volume Inj. : 1 ul
 Signal Phase : Rxi-1ms
 Signal Info : 20M x 0.18mm x 0.18um

Compound	R.T.	Response	Conc Units

System Monitoring Compounds			
9) S ortho-Terphenyl (SURR)	11.537	664281	5.731 ug/ml
Spiked Amount	50.000	Recovery	= 11.46%
12) S 1-chlorooctadecane (S...	12.994	4082687	45.258 ug/ml
Spiked Amount	50.000	Recovery	= 90.52%
Target Compounds			
8) T n-Octadecane (C18)	11.237	411171	3.855 ug/ml
10) T n-Eicosane (C20)	12.548	481674	4.473 ug/ml

(f)=RT Delta > 1/2 Window

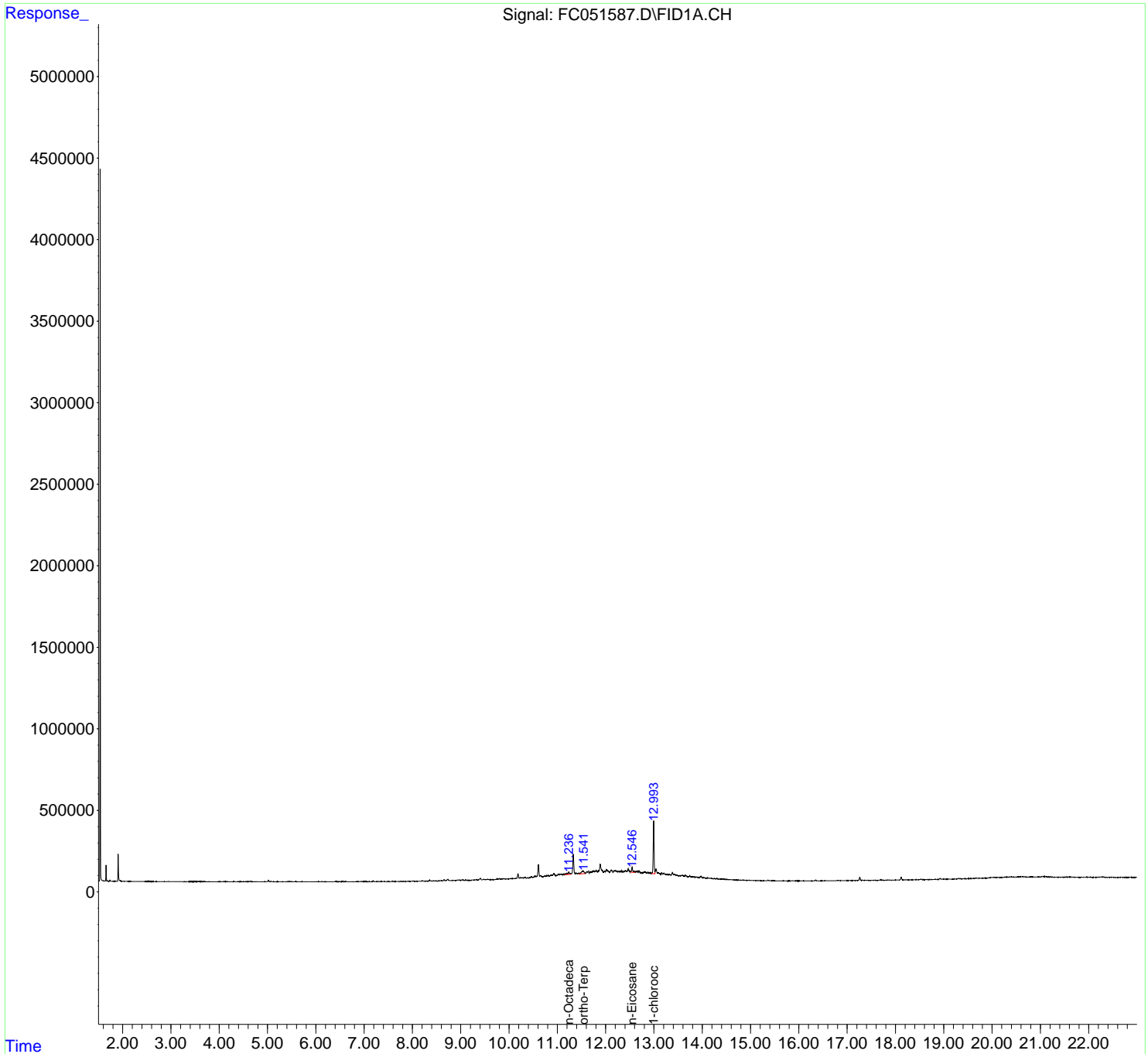
(m)=manual int.

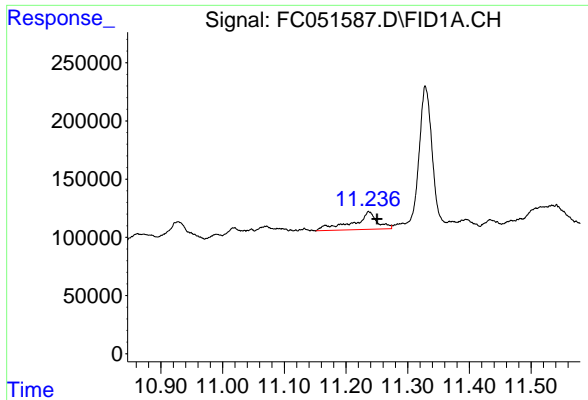
Data Path : Z:\pestpcbsrv\HPCHEM1\FID_C\Data\FC010621AL\
 Data File : FC051587.D
 Signal(s) : FID1A.CH
 Acq On : 06 Jan 2021 19:15
 Operator : DD\AJ
 Sample : M1004-09
 Misc :
 ALS Vial : 9 Sample Multiplier: 1

Instrument :
 FID_C
 ClientSampleId :

Integration File: autoint1.e
 Quant Time: Jan 07 00:50:45 2021
 Quant Method : Z:\pestpcbsrv\HPCHEM1\FID_C\Method\Alaphatic EPH 122120.M
 Quant Title : GC Extractables
 QLast Update : Tue Dec 22 00:33:00 2020
 Response via : Initial Calibration
 Integrator: ChemStation 6890 Scale Mode: Large solvent peaks clipped

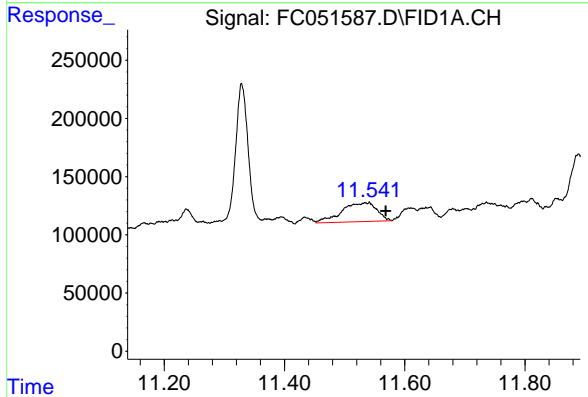
Volume Inj. : 1 ul
 Signal Phase : Rxi-1ms
 Signal Info : 20M x 0.18mm x 0.18um



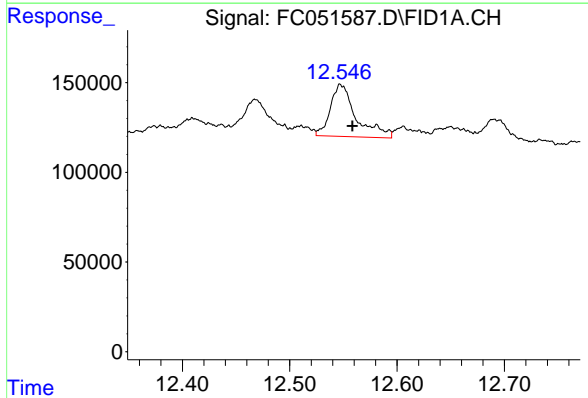


#8 n-Octadecane (C18)
 R.T.: 11.237 min
 Delta R.T.: -0.013 min
 Response: 411171
 Conc: 3.86 ug/ml

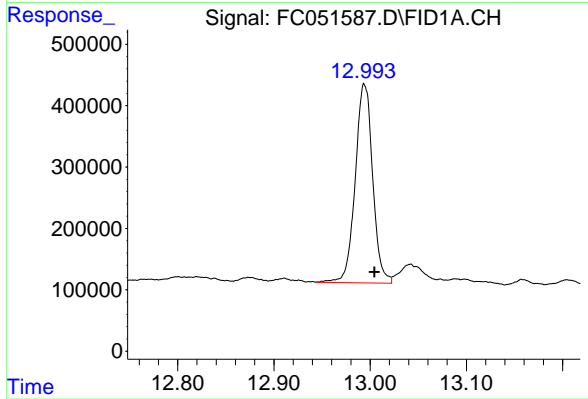
Instrument :
 FID_C
 ClientSampled :



#9 ortho-Terphenyl (SURR)
 R.T.: 11.537 min
 Delta R.T.: -0.032 min
 Response: 664281
 Conc: 5.73 ug/ml



#10 n-Eicosane (C20)
 R.T.: 12.548 min
 Delta R.T.: -0.010 min
 Response: 481674
 Conc: 4.47 ug/ml



#12 1-chlorooctadecane (SURR)
 R.T.: 12.994 min
 Delta R.T.: -0.010 min
 Response: 4082687
 Conc: 45.26 ug/ml