

Data Path : Z:\pestpcbsrv\HPCHEM1\FID\_C\Data\FC010621AL\  
 Data File : FC051588.D  
 Signal(s) : FID1A.CH  
 Acq On : 06 Jan 2021 19:52  
 Operator : DD\AJ  
 Sample : PB133911BL  
 Misc :  
 ALS Vial : 10 Sample Multiplier: 1

Instrument :  
 FID\_C  
 ClientSampleId :  
 PB133911BL

Integration File: autoint1.e  
 Quant Time: Jan 07 00:50:54 2021  
 Quant Method : Z:\pestpcbsrv\HPCHEM1\FID\_C\Method\Alaphatic EPH 122120.M  
 Quant Title : GC Extractables  
 QLast Update : Tue Dec 22 00:33:00 2020  
 Response via : Initial Calibration  
 Integrator: ChemStation 6890 Scale Mode: Large solvent peaks clipped

Volume Inj. : 1 ul  
 Signal Phase : Rxi-1ms  
 Signal Info : 20M x 0.18mm x 0.18um

Compound	R.T.	Response	Conc Units
-----			
System Monitoring Compounds			
9) S ortho-Terphenyl (SURR)	11.559	5585931	48.196 ug/ml
Spiked Amount	50.000	Recovery	= 96.39%
12) S 1-chlorooctadecane (S...	12.993	4293540	47.595 ug/ml
Spiked Amount	50.000	Recovery	= 95.19%

Target Compounds

(f)=RT Delta > 1/2 Window

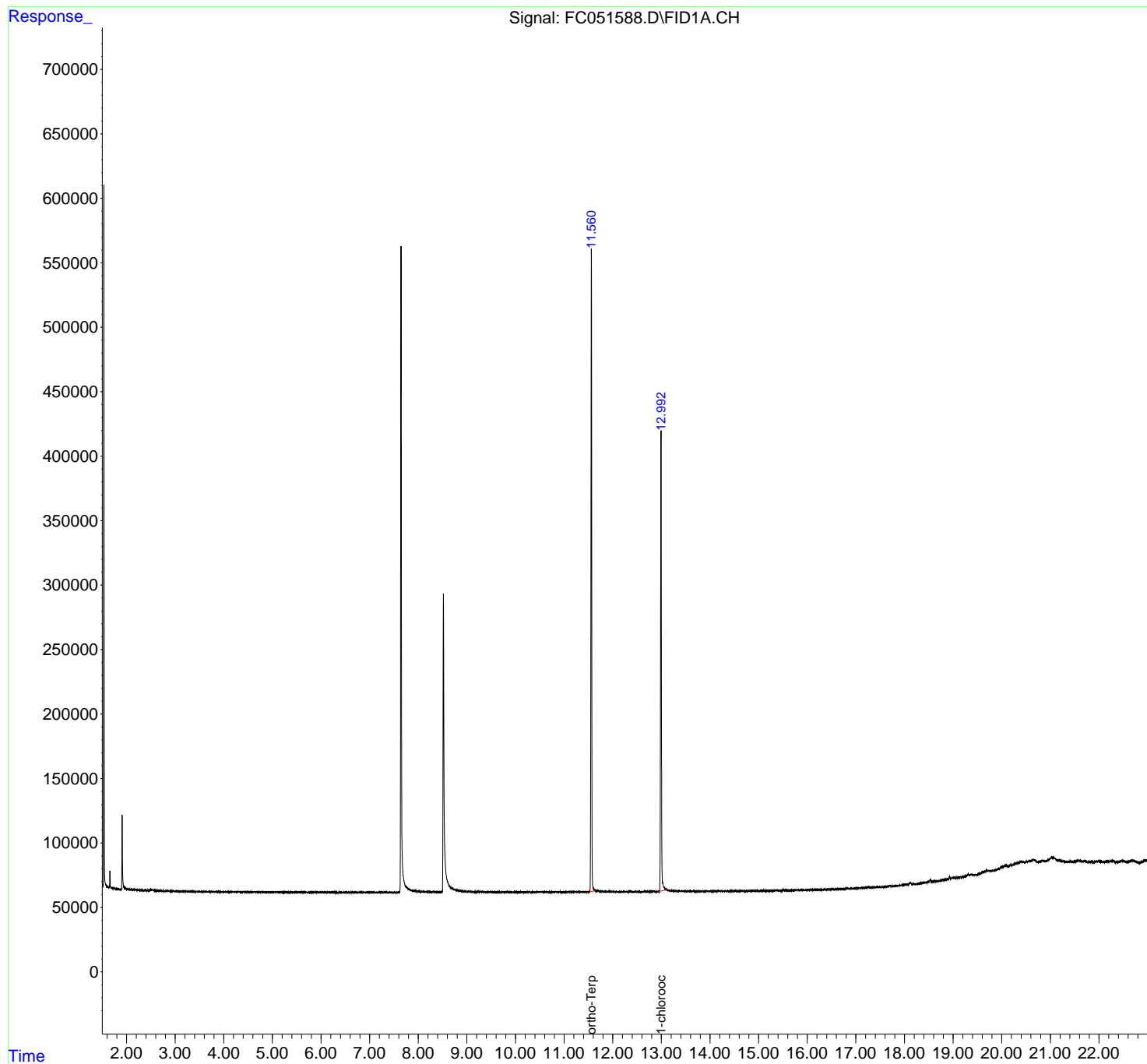
(m)=manual int.

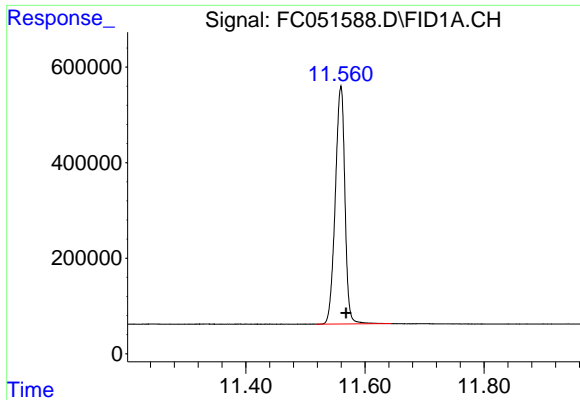
Data Path : Z:\pestpcbsrv\HPCHEM1\FID\_C\Data\FC010621AL\  
Data File : FC051588.D  
Signal(s) : FID1A.CH  
Acq On : 06 Jan 2021 19:52  
Operator : DD\AJ  
Sample : PB133911BL  
Misc :  
ALS Vial : 10 Sample Multiplier: 1

Instrument :  
FID\_C  
ClientSampleId :  
PB133911BL

Integration File: autoint1.e  
Quant Time: Jan 07 00:50:54 2021  
Quant Method : Z:\pestpcbsrv\HPCHEM1\FID\_C\Method\Aliphatic EPH 122120.M  
Quant Title : GC Extractables  
QLast Update : Tue Dec 22 00:33:00 2020  
Response via : Initial Calibration  
Integrator: ChemStation 6890 Scale Mode: Large solvent peaks clipped

Volume Inj. : 1 ul  
Signal Phase : Rxi-1ms  
Signal Info : 20M x 0.18mm x 0.18um

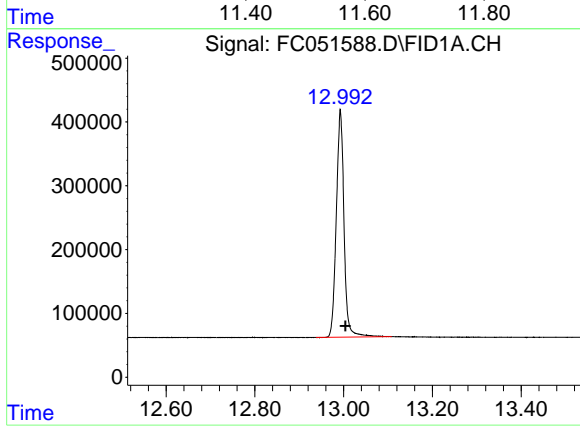




#9 ortho-Terphenyl (SURR)

R.T.: 11.559 min  
Delta R.T.: -0.009 min  
Response: 5585931  
Conc: 48.20 ug/ml

Instrument :  
FID\_C  
ClientSampled :  
PB133911BL



#12 1-chlorooctadecane (SURR)

R.T.: 12.993 min  
Delta R.T.: -0.012 min  
Response: 4293540  
Conc: 47.60 ug/ml