

Data Path : Z:\pestpcbsrv\HPCHEM1\FID_C\Data\FC010820AL\
 Data File : FC045233.D
 Signal(s) : FID1A.CH
 Acq On : 08 Jan 2020 20:21
 Operator : DD\AJ
 Sample : L1013-05
 Misc :
 ALS Vial : 11 Sample Multiplier: 1

Integration File: autoint1.e
 Quant Time: Jan 09 01:19:18 2020
 Quant Method : Z:\pestpcbsrv\HPCHEM1\FID_C\Method\Alaphatic EPH 122319.M
 Quant Title : GC Extractables
 QLast Update : Tue Dec 24 03:02:13 2019
 Response via : Initial Calibration
 Integrator: ChemStation 6890 Scale Mode: Large solvent peaks clipped

Volume Inj. : 1 ul
 Signal Phase : Rxi-1ms
 Signal Info : 20M x 0.18mm x 0.18um

Compound	R.T.	Response	Conc Units

System Monitoring Compounds			
9) S ortho-Terphenyl (SURR)	11.765	3735134	32.933 ug/ml
Spiked Amount	50.000	Recovery	= 65.87%
12) S 1-chlorooctadecane (S...	13.182	14859919	166.655 ug/ml
Spiked Amount	50.000	Recovery	= 333.31%
Target Compounds			
6) T n-Tetradecane (C14)	8.396	146503	1.437 ug/ml
7) T n-Hexadecane (C16)	9.993	368907	3.583 ug/ml
8) T n-Octadecane (C18)	11.431	290543	2.794 ug/ml
10) T n-Eicosane (C20)	12.738	255952	2.446 ug/ml
11) T n-Heneicosane (C21)	13.372	886682	8.384 ug/ml
13) T n-Docosane (C22)	13.935	143862	1.361 ug/ml
14) T n-Tetracosane (C24)	15.041	546204	5.112 ug/ml
15) T n-Hexacosane (C26)	16.054	221699	2.079 ug/ml
16) T n-Octacosane (C28)	17.002	205699	1.948 ug/ml
17) T n-Tricontane (C30)	17.887	391946	3.845 ug/ml
18) T n-Dotriacontane (C32)	18.716	420932	4.866 ug/ml
19) T n-Tetratriacontane (C34)	19.498	231062	3.154 ug/ml
20) T n-Hexatriacontane (C36)	20.242	180809	2.751 ug/ml

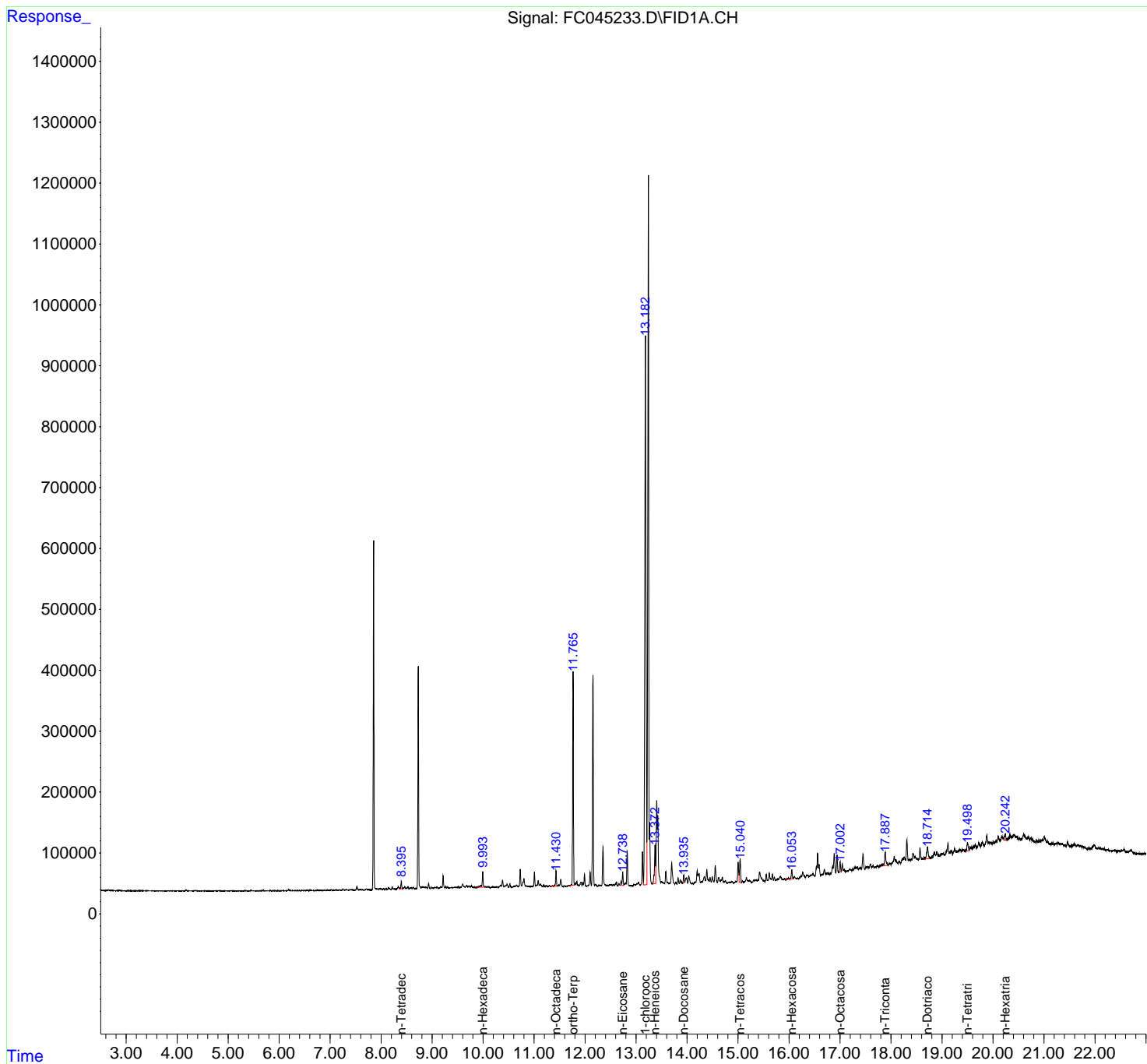
(f)=RT Delta > 1/2 Window

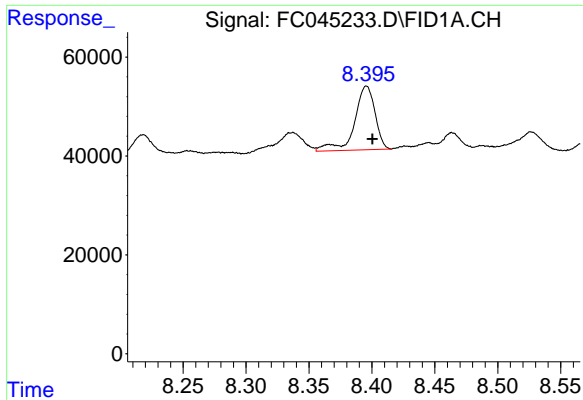
(m)=manual int.

Data Path : Z:\pestpcbsrv\HPCHEM1\FID_C\Data\FC010820AL\
 Data File : FC045233.D
 Signal(s) : FID1A.CH
 Acq On : 08 Jan 2020 20:21
 Operator : DD\AJ
 Sample : L1013-05
 Misc :
 ALS Vial : 11 Sample Multiplier: 1

Integration File: autoint1.e
 Quant Time: Jan 09 01:19:18 2020
 Quant Method : Z:\pestpcbsrv\HPCHEM1\FID_C\Method\Aliphatic EPH 122319.M
 Quant Title : GC Extractables
 QLast Update : Tue Dec 24 03:02:13 2019
 Response via : Initial Calibration
 Integrator: ChemStation 6890 Scale Mode: Large solvent peaks clipped

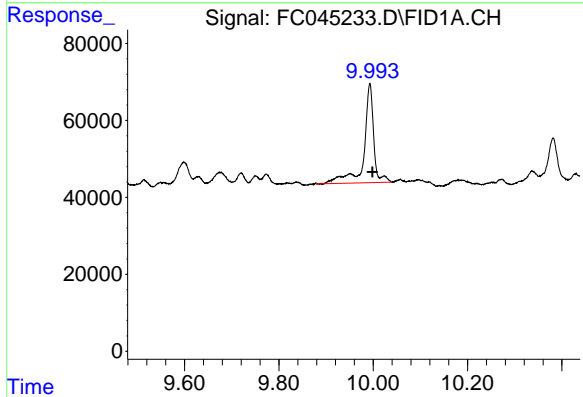
Volume Inj. : 1 ul
 Signal Phase : Rxi-1ms
 Signal Info : 20M x 0.18mm x 0.18um





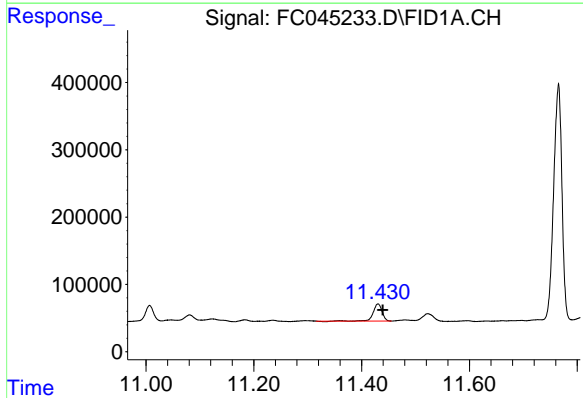
#6 n-Tetradecane (C14)

R.T.: 8.396 min
Delta R.T.: -0.005 min
Response: 146503
Conc: 1.44 ug/ml



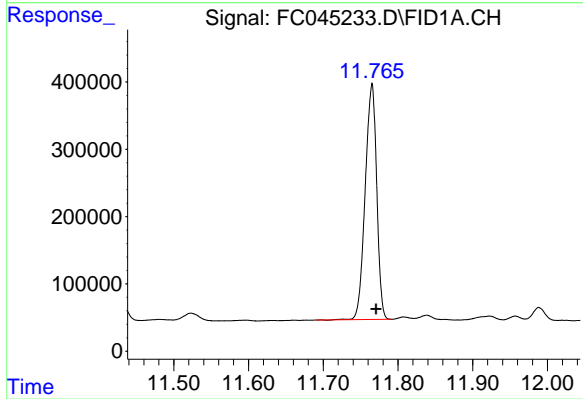
#7 n-Hexadecane (C16)

R.T.: 9.993 min
Delta R.T.: -0.005 min
Response: 368907
Conc: 3.58 ug/ml



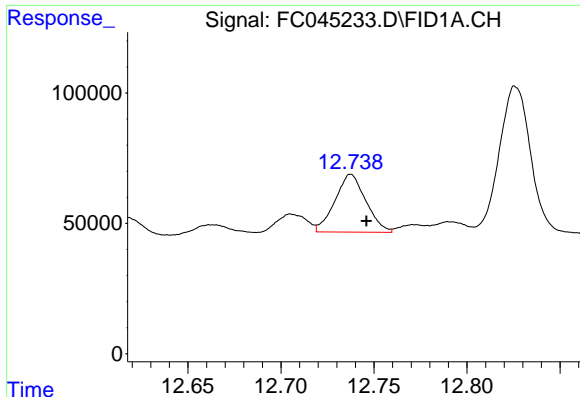
#8 n-Octadecane (C18)

R.T.: 11.431 min
Delta R.T.: -0.009 min
Response: 290543
Conc: 2.79 ug/ml



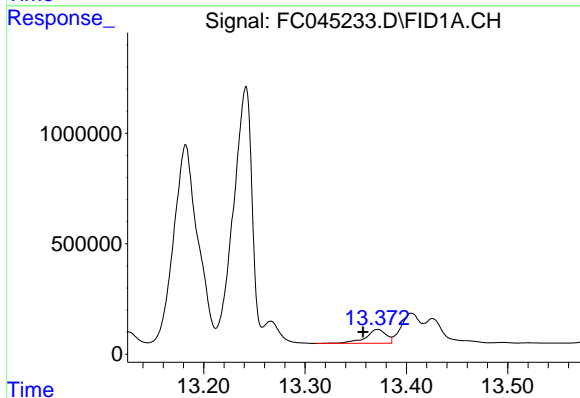
#9 ortho-Terphenyl (SURR)

R.T.: 11.765 min
Delta R.T.: -0.005 min
Response: 3735134
Conc: 32.93 ug/ml



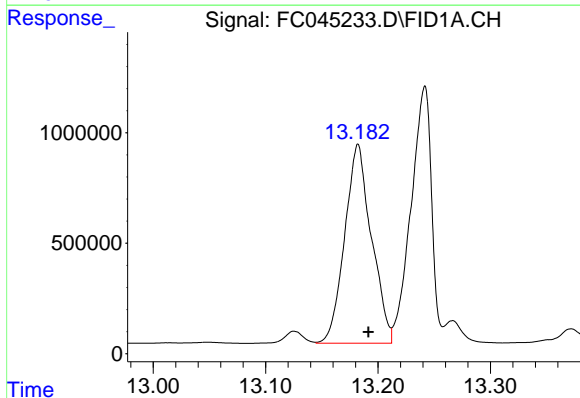
#10 n-Eicosane (C20)

R.T.: 12.738 min
 Delta R.T.: -0.008 min
 Response: 255952
 Conc: 2.45 ug/ml



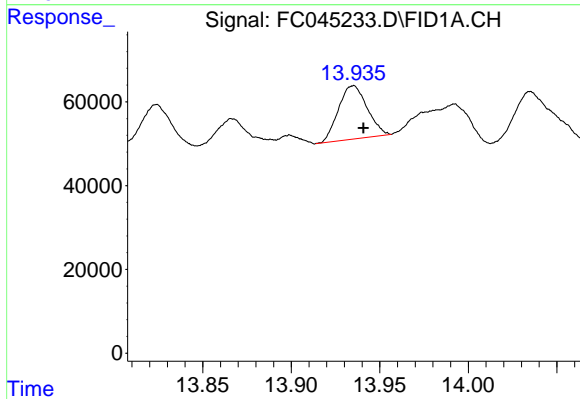
#11 n-Heneicosane (C21)

R.T.: 13.372 min
 Delta R.T.: 0.014 min
 Response: 886682
 Conc: 8.38 ug/ml



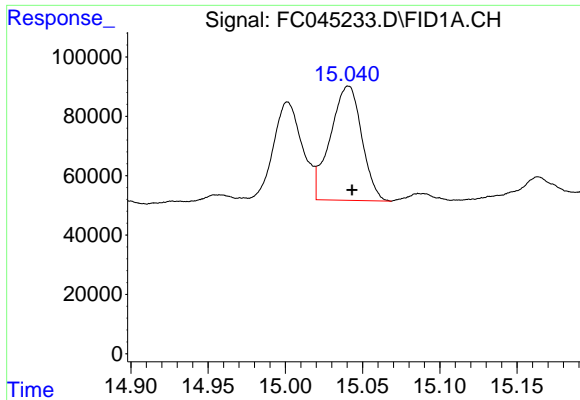
#12 1-chlorooctadecane (SURR)

R.T.: 13.182 min
 Delta R.T.: -0.009 min
 Response: 14859919
 Conc: 166.65 ug/ml



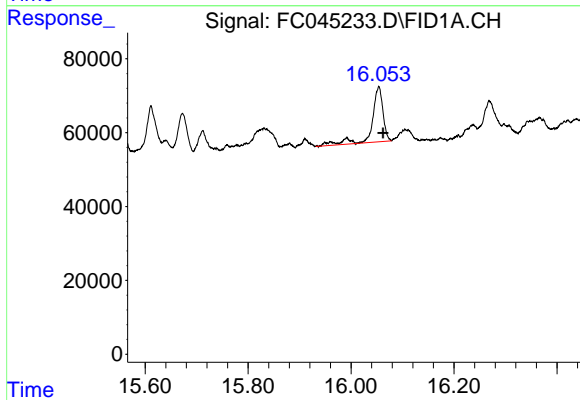
#13 n-Docosane (C22)

R.T.: 13.935 min
 Delta R.T.: -0.006 min
 Response: 143862
 Conc: 1.36 ug/ml



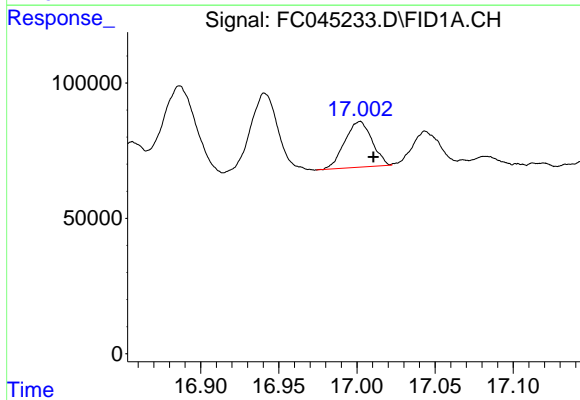
#14 n-Tetracosane (C24)

R.T.: 15.041 min
Delta R.T.: -0.002 min
Response: 546204
Conc: 5.11 ug/ml



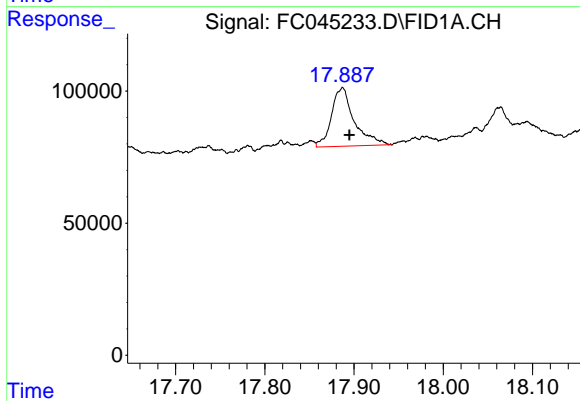
#15 n-Hexacosane (C26)

R.T.: 16.054 min
Delta R.T.: -0.008 min
Response: 221699
Conc: 2.08 ug/ml



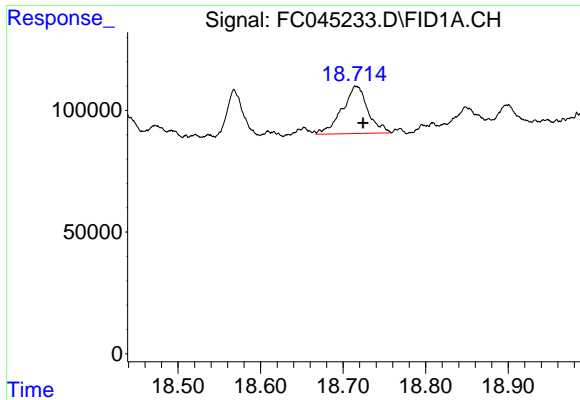
#16 n-Octacosane (C28)

R.T.: 17.002 min
Delta R.T.: -0.009 min
Response: 205699
Conc: 1.95 ug/ml



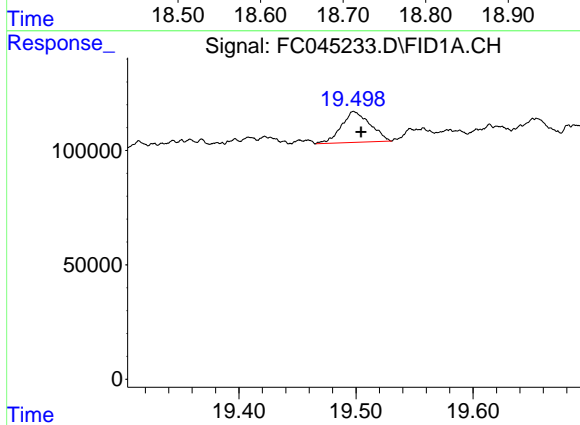
#17 n-Tricontane (C30)

R.T.: 17.887 min
Delta R.T.: -0.008 min
Response: 391946
Conc: 3.84 ug/ml



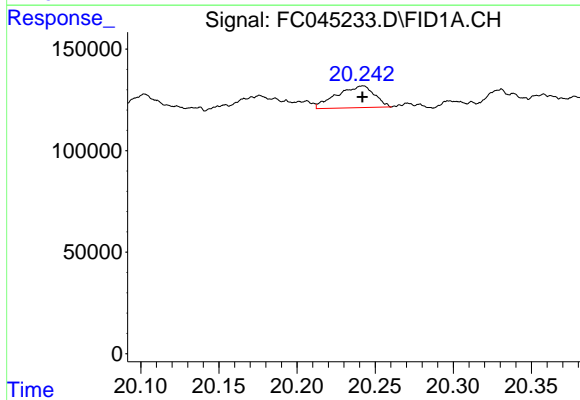
#18 n-Dotriacontane (C32)

R.T.: 18.716 min
Delta R.T.: -0.009 min
Response: 420932
Conc: 4.87 ug/ml



#19 n-Tetraatriacontane (C34)

R.T.: 19.498 min
Delta R.T.: -0.006 min
Response: 231062
Conc: 3.15 ug/ml



#20 n-Hexatriacontane (C36)

R.T.: 20.242 min
Delta R.T.: 0.000 min
Response: 180809
Conc: 2.75 ug/ml