

Data Path : Z:\pestpcbsrv\HPCHEM1\FID\_C\Data\FC011019AL\  
Data File : FC038562.D  
Signal(s) : FID1A.CH  
Acq On : 11 Jan 2019 3:49  
Operator : AJ\SJ  
Sample : K1100-01  
Misc :  
ALS Vial : 29 Sample Multiplier: 1

Integration File: autoint1.e  
Quant Time: Jan 11 06:33:15 2019  
Quant Method : Z:\pestpcbsrv\HPCHEM1\FID\_C\Method\Alaphatic EPH 010919.M  
Quant Title : GC Extractables  
QLast Update : Thu Jan 10 05:47:13 2019  
Response via : Initial Calibration  
Integrator: ChemStation 6890 Scale Mode: Large solvent peaks clipped

Volume Inj. : 1 ul  
Signal Phase : Rxi-1ms  
Signal Info : 20M x 0.18mm x 0.18um

| Compound                       | R.T.   | Response | Conc Units    |
|--------------------------------|--------|----------|---------------|
| -----                          |        |          |               |
| System Monitoring Compounds    |        |          |               |
| 12) S 1-chlorooctadecane (S... | 12.703 | 2654931  | 33.630 ug/mlm |
| Spiked Amount                  | 50.000 | Recovery | = 67.26%      |

Target Compounds

-----

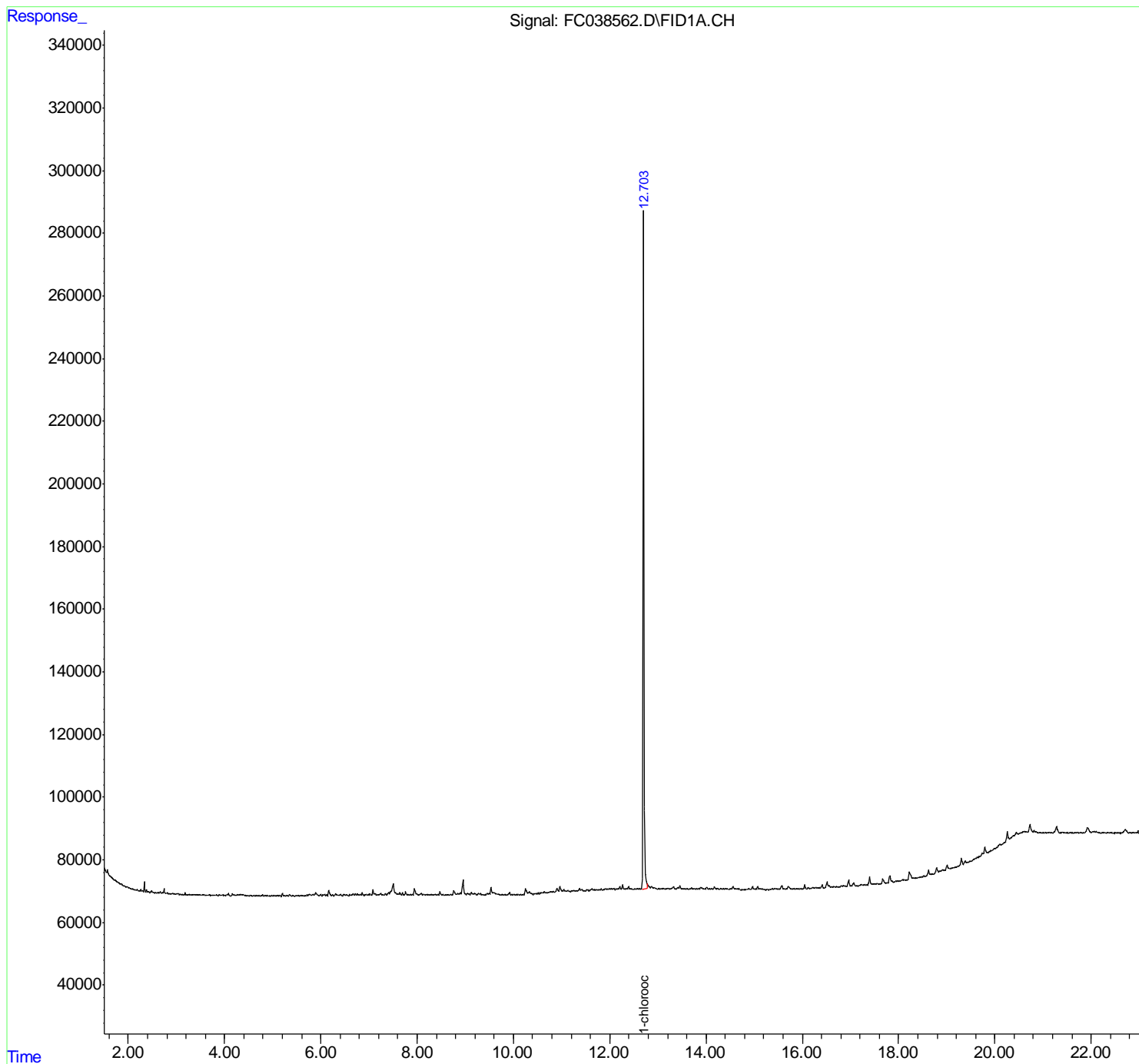
(f)=RT Delta > 1/2 Window

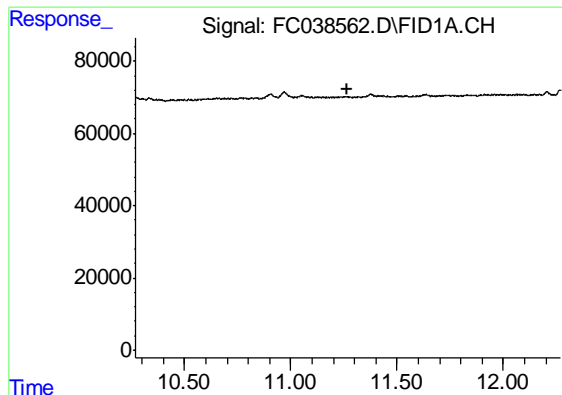
(m)=manual int.

Data Path : Z:\pestpcbsrv\HPCHEM1\FID\_C\Data\FC011019AL\  
Data File : FC038562.D  
Signal(s) : FID1A.CH  
Acq On : 11 Jan 2019 3:49  
Operator : AJ\SJ  
Sample : K1100-01  
Misc :  
ALS Vial : 29 Sample Multiplier: 1

Integration File: autoint1.e  
Quant Time: Jan 11 06:33:15 2019  
Quant Method : Z:\pestpcbsrv\HPCHEM1\FID\_C\Method\Alaphatic EPH 010919.M  
Quant Title : GC Extractables  
QLast Update : Thu Jan 10 05:47:13 2019  
Response via : Initial Calibration  
Integrator: ChemStation 6890 Scale Mode: Large solvent peaks clipped

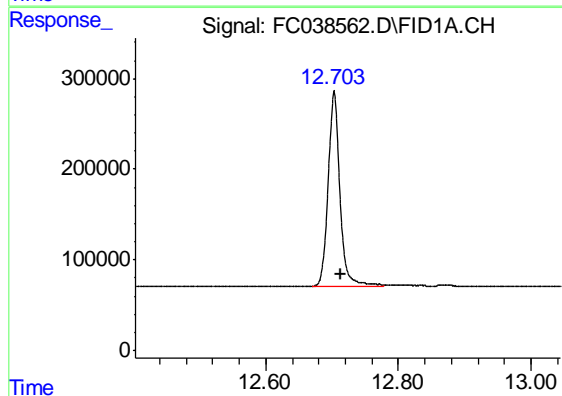
Volume Inj. : 1 ul  
Signal Phase : Rxi-1ms  
Signal Info : 20M x 0.18mm x 0.18um





#9 ortho-Terphenyl (SURR)

R.T.: 0.000 min  
Exp R.T. : 11.269 min  
Response: 0  
Conc: N.D.



#12 1-chlorooctadecane (SURR)

R.T.: 12.703 min  
Delta R.T.: -0.010 min  
Response: 2654931  
Conc: 33.63 ug/ml m