

Data Path : Z:\pestpcbsrv\HPCHEM1\FID\_C\Data\FC011022AL\  
 Data File : FC057798.D  
 Signal(s) : FID1A.CH  
 Acq On : 10 Jan 2022 18:18  
 Operator : AJ\MA  
 Sample : N1065-29  
 Misc :  
 ALS Vial : 11 Sample Multiplier: 1

Instrument :  
 FID\_C  
 ClientSampleId :

Integration File: autoint1.e  
 Quant Time: Jan 11 00:12:50 2022  
 Quant Method : Z:\pestpcbsrv\HPCHEM1\FID\_C\Method\Aliphatic EPH 010522.M  
 Quant Title : GC Extractables  
 QLast Update : Wed Jan 05 12:13:43 2022  
 Response via : Initial Calibration  
 Integrator: ChemStation 6890 Scale Mode: Large solvent peaks clipped

Volume Inj. : 1 ul  
 Signal Phase : Rxi-1ms  
 Signal Info : 20M x 0.18mm x 0.18um

Compound	R.T.	Response	Conc Units
-----			
System Monitoring Compounds			
9) S ortho-Terphenyl (SURR)	10.709	10720380	55.441 ug/ml
Spiked Amount	50.000	Recovery	= 110.88%
12) S 1-chlorooctadecane (S...	12.145	7989227	54.206 ug/ml
Spiked Amount	50.000	Recovery	= 108.41%
Target Compounds			
3) T A~Naphthalene (C11.7)	5.225f	192651	1.061 ug/ml
10) T n-Eicosane (C20)	11.728	675089	3.943 ug/ml
18) T n-Dotriacontane (C32)	17.667	146495	1.051 ug/ml
-----			

(f)=RT Delta > 1/2 Window

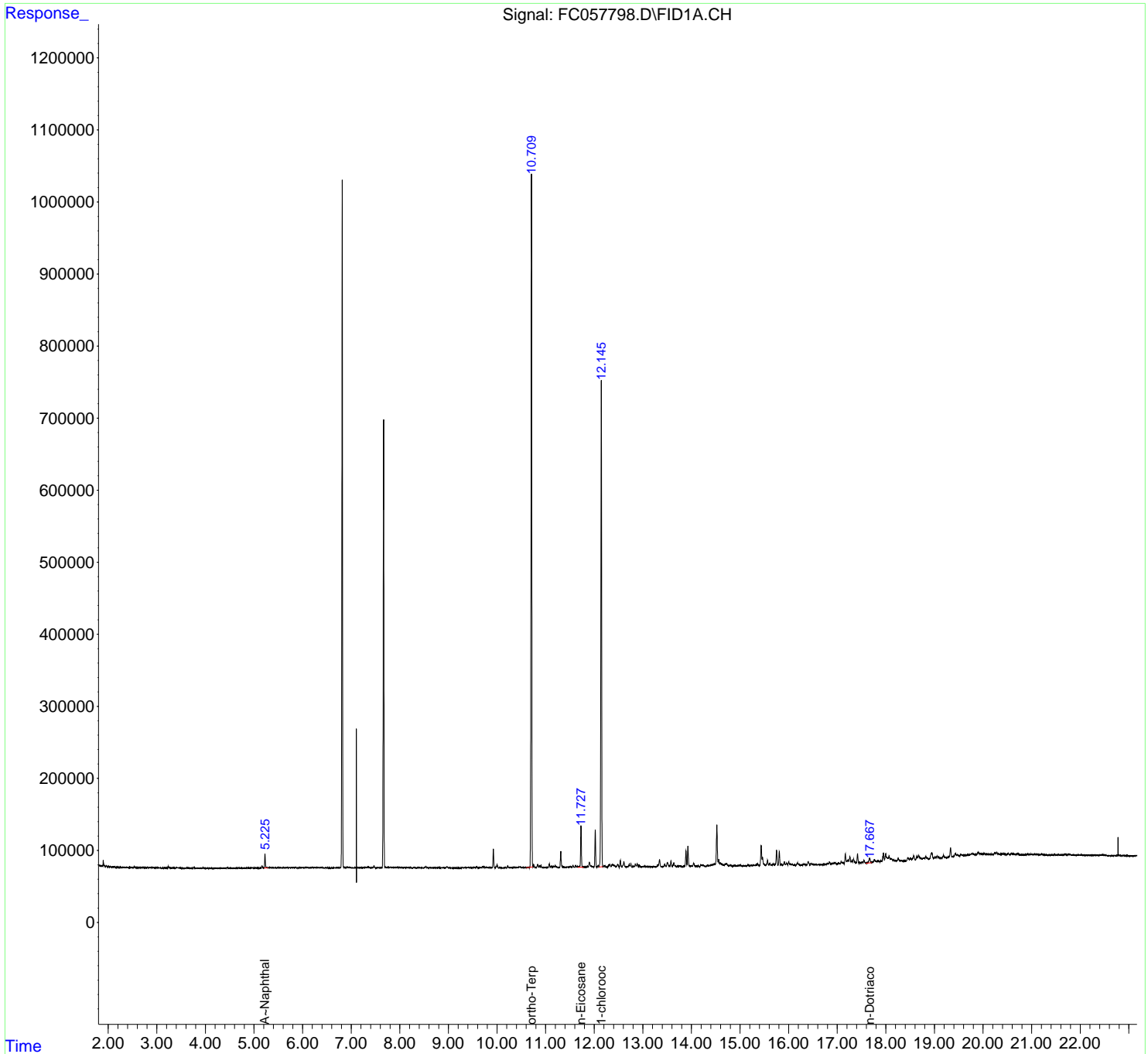
(m)=manual int.

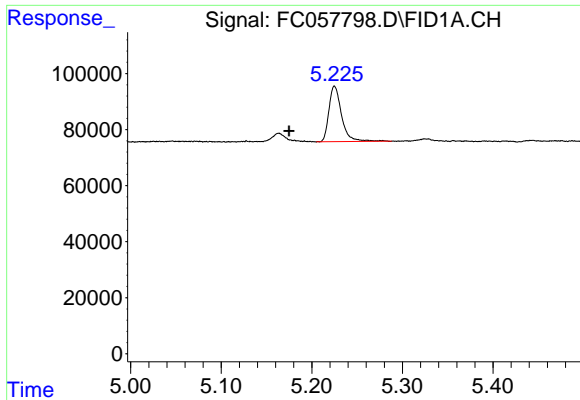
Data Path : Z:\pestpcbsrv\HPCHEM1\FID\_C\Data\FC011022AL\  
Data File : FC057798.D  
Signal(s) : FID1A.CH  
Acq On : 10 Jan 2022 18:18  
Operator : AJ\MA  
Sample : N1065-29  
Misc :  
ALS Vial : 11 Sample Multiplier: 1

Instrument :  
FID\_C  
ClientSampleId :

Integration File: autoint1.e  
Quant Time: Jan 11 00:12:50 2022  
Quant Method : Z:\pestpcbsrv\HPCHEM1\FID\_C\Method\Aliphatic EPH 010522.M  
Quant Title : GC Extractables  
QLast Update : Wed Jan 05 12:13:43 2022  
Response via : Initial Calibration  
Integrator: ChemStation 6890 Scale Mode: Large solvent peaks clipped

Volume Inj. : 1 ul  
Signal Phase : Rxi-1ms  
Signal Info : 20M x 0.18mm x 0.18um

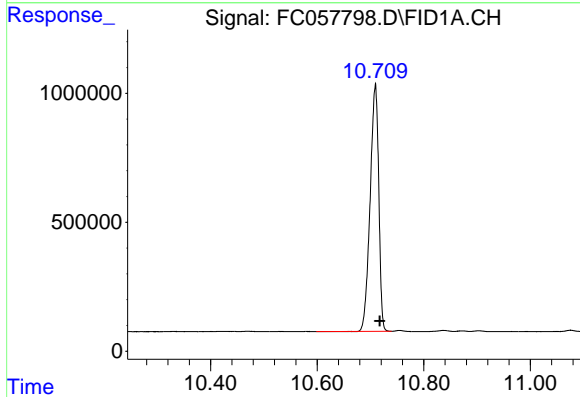




#3 A~Naphthalene (C11.7)

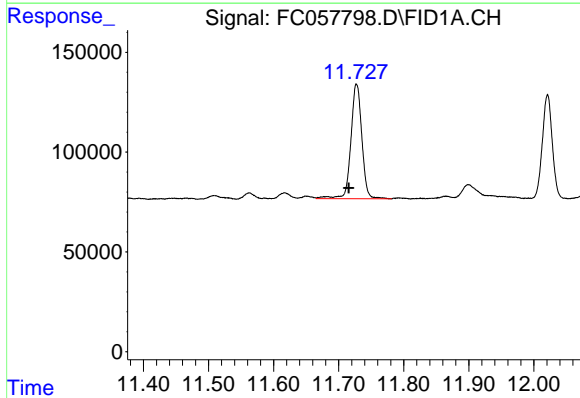
R.T.: 5.225 min  
 Delta R.T.: 0.051 min  
 Response: 192651  
 Conc: 1.06 ug/ml

Instrument :  
 FID\_C  
 ClientSampleId :



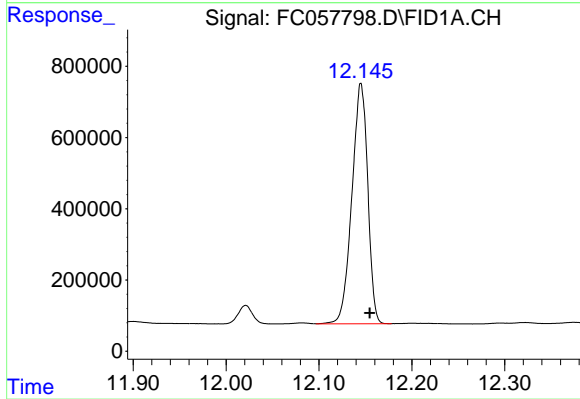
#9 ortho-Terphenyl (SURR)

R.T.: 10.709 min  
 Delta R.T.: -0.009 min  
 Response: 10720380  
 Conc: 55.44 ug/ml



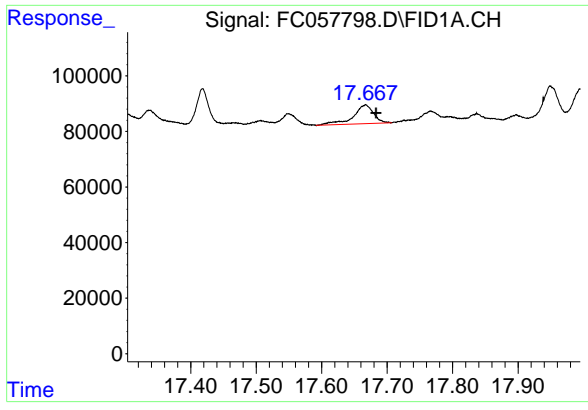
#10 n-Eicosane (C20)

R.T.: 11.728 min  
 Delta R.T.: 0.012 min  
 Response: 675089  
 Conc: 3.94 ug/ml



#12 1-chlorooctadecane (SURR)

R.T.: 12.145 min  
 Delta R.T.: -0.010 min  
 Response: 7989227  
 Conc: 54.21 ug/ml



#18 n-Dotriacontane (C32)

R.T.: 17.667 min  
Delta R.T.: -0.016 min  
Response: 146495  
Conc: 1.05 ug/ml

Instrument :  
FID\_C  
ClientSampleId :