

Data Path : Z:\pestpcbsrv\HPCHEM1\FID\_C\Data\FC011022AL\  
 Data File : FC057793.D  
 Signal(s) : FID1A.CH  
 Acq On : 10 Jan 2022 15:33  
 Operator : AJ\MA  
 Sample : N1065-14  
 Misc :  
 ALS Vial : 6 Sample Multiplier: 1

Instrument :  
 FID\_C  
 ClientSampleId :  
 AMI-4

Integration File: autoint1.e  
 Quant Time: Jan 11 00:11:42 2022  
 Quant Method : Z:\pestpcbsrv\HPCHEM1\FID\_C\Method\Aliphatic EPH 010522.M  
 Quant Title : GC Extractables  
 QLast Update : Wed Jan 05 12:13:43 2022  
 Response via : Initial Calibration  
 Integrator: ChemStation 6890 Scale Mode: Large solvent peaks clipped

Volume Inj. : 1 ul  
 Signal Phase : Rxi-1ms  
 Signal Info : 20M x 0.18mm x 0.18um

| Compound                       | R.T.   | Response | Conc Units   |
|--------------------------------|--------|----------|--------------|
| -----                          |        |          |              |
| System Monitoring Compounds    |        |          |              |
| 9) S ortho-Terphenyl (SURR)    | 10.707 | 5913855  | 30.584 ug/ml |
| Spiked Amount                  | 50.000 | Recovery | = 61.17%     |
| 12) S 1-chlorooctadecane (S... | 12.145 | 4620226  | 31.348 ug/ml |
| Spiked Amount                  | 50.000 | Recovery | = 62.70%     |

Target Compounds

-----

(f)=RT Delta > 1/2 Window

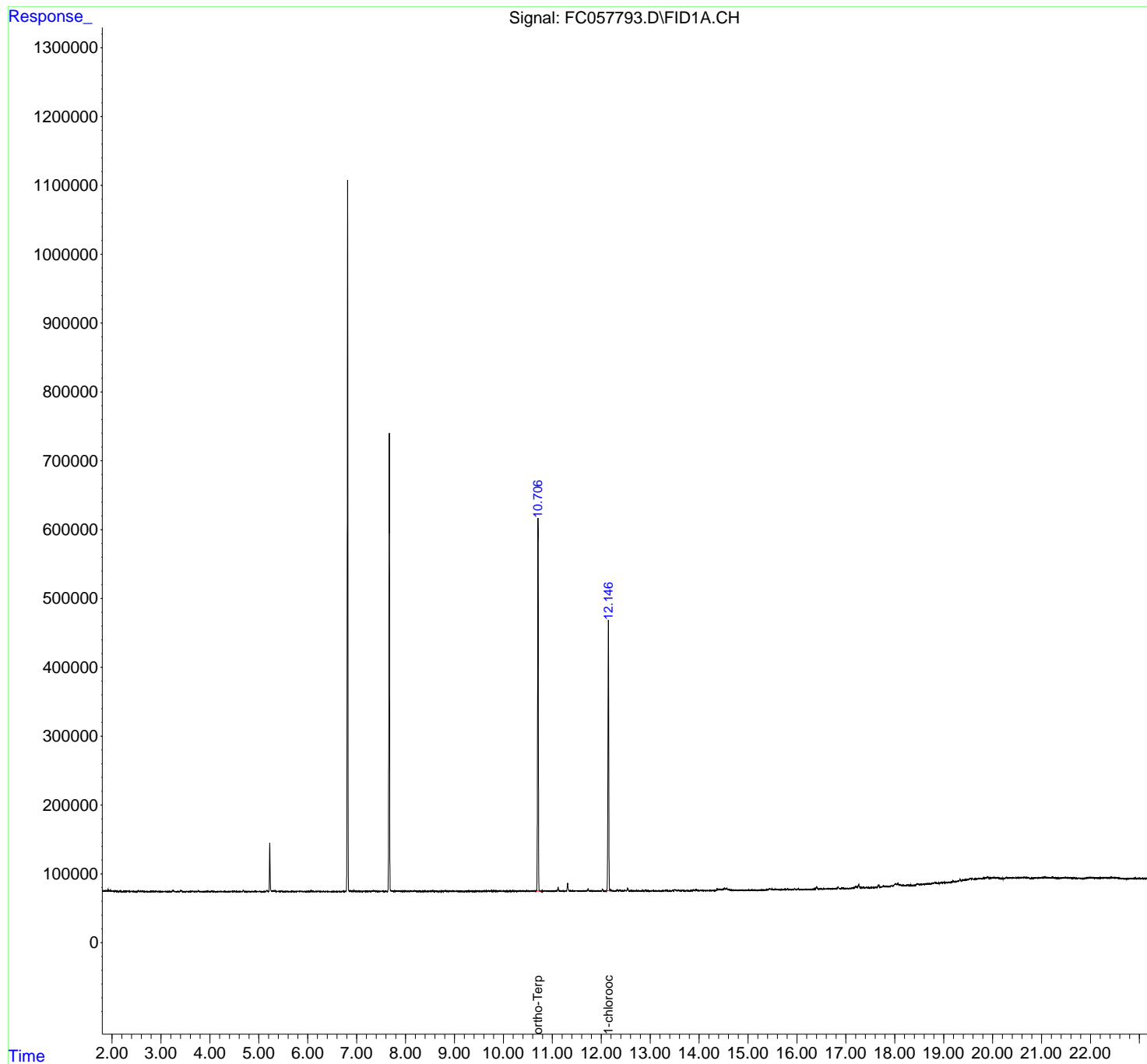
(m)=manual int.

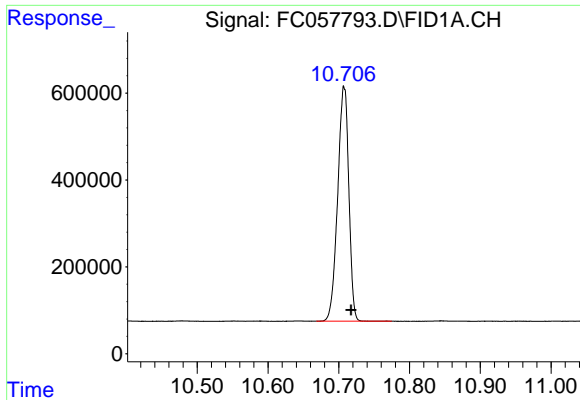
Data Path : Z:\pestpcbsrv\HPCHEM1\FID\_C\Data\FC011022AL\  
Data File : FC057793.D  
Signal(s) : FID1A.CH  
Acq On : 10 Jan 2022 15:33  
Operator : AJ\MA  
Sample : N1065-14  
Misc :  
ALS Vial : 6 Sample Multiplier: 1

Instrument :  
FID\_C  
ClientSampleId :  
AMI-4

Integration File: autoint1.e  
Quant Time: Jan 11 00:11:42 2022  
Quant Method : Z:\pestpcbsrv\HPCHEM1\FID\_C\Method\Aliphatic EPH 010522.M  
Quant Title : GC Extractables  
QLast Update : Wed Jan 05 12:13:43 2022  
Response via : Initial Calibration  
Integrator: ChemStation 6890 Scale Mode: Large solvent peaks clipped

Volume Inj. : 1 ul  
Signal Phase : Rxi-1ms  
Signal Info : 20M x 0.18mm x 0.18um

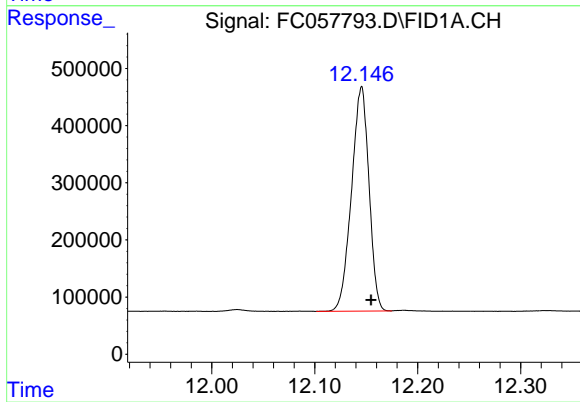




#9 ortho-Terphenyl (SURR)

R.T.: 10.707 min  
Delta R.T.: -0.010 min  
Response: 5913855  
Conc: 30.58 ug/ml

Instrument :  
FID\_C  
ClientSampleId :  
AMI-4



#12 1-chlorooctadecane (SURR)

R.T.: 12.145 min  
Delta R.T.: -0.010 min  
Response: 4620226  
Conc: 31.35 ug/ml