

Data Path : Z:\pestpcbsrv\HPCHEM1\FID\_C\Data\FC011023AL\  
 Data File : FC062612.D  
 Signal(s) : FID1A.ch  
 Acq On : 10 Jan 2023 21:08  
 Operator : YP/AJ  
 Sample : 20 PPM ALIPHATIC HC STD  
 Misc :  
 ALS Vial : 2 Sample Multiplier: 1

Instrument :  
 FID\_C  
 ClientSampleId :  
 20 PPM ALIPHATIC HC STD

Integration File: autoint1.e  
 Quant Time: Jan 11 05:49:03 2023  
 Quant Method : Z:\pestpcbsrv\HPCHEM1\FID\_C\Method\Aliphatic EPH 010523.M  
 Quant Title : GC Extractables  
 QLast Update : Thu Jan 05 04:54:00 2023  
 Response via : Initial Calibration  
 Integrator: ChemStation

Volume Inj. : 1 ul  
 Signal Phase : Rxi-1ms  
 Signal Info : 20M x 0.18mm x 0.18um

Compound	R.T.	Response	Conc Units
-----			
System Monitoring Compounds			
9) S ortho-Terphenyl (SURR)	11.557	2699219	19.105 ug/ml
Spiked Amount	50.000	Recovery	= 38.21%
12) S 1-chlorooctadecane (S...	12.993	2054828	19.507 ug/ml
Spiked Amount	50.000	Recovery	= 39.01%
Target Compounds			
1) T n-Nonane (C9)	3.312	2530809	18.926 ug/ml
2) T n-Decane (C10)	4.381	2501400	19.287 ug/ml
3) T A~Naphthalene (C11.7)	5.967	2840032	19.327 ug/ml
4) T n-Dodecane (C12)	6.403	2465155	19.181 ug/ml
5) T A~2-methylnaphthalene...	7.025	2640554	19.314 ug/ml
6) T n-Tetradecane (C14)	8.198	2482912	19.288 ug/ml
7) T n-Hexadecane (C16)	9.800	2492983	19.304 ug/ml
8) T n-Octadecane (C18)	11.242	2493645	19.256 ug/ml
10) T n-Eicosane (C20)	12.550	2393333	19.393 ug/ml
11) T n-Heneicosane (C21)	13.161	2361898	19.271 ug/ml
13) T n-Docosane (C22)	13.747	2347530	19.636 ug/ml
14) T n-Tetracosane (C24)	14.848	2368904	20.341 ug/ml
15) T n-Hexacosane (C26)	15.869	2305257	20.520 ug/ml
16) T n-Octacosane (C28)	16.817	2323727	21.163 ug/ml
17) T n-Tricontane (C30)	17.701	2404304	22.201 ug/ml
18) T n-Dotriacontane (C32)	18.531	2446696	22.411 ug/ml
19) T n-Tetratriacontane (C34)	19.314	2350916	21.624 ug/ml
20) T n-Hexatriacontane (C36)	20.051	2394134	21.523 ug/ml
21) T n-Octatriacontane (C38)	20.784	2240216	21.153 ug/ml
22) T n-Tetracontane (C40)	21.689	2176980	20.442 ug/ml

(f)=RT Delta > 1/2 Window

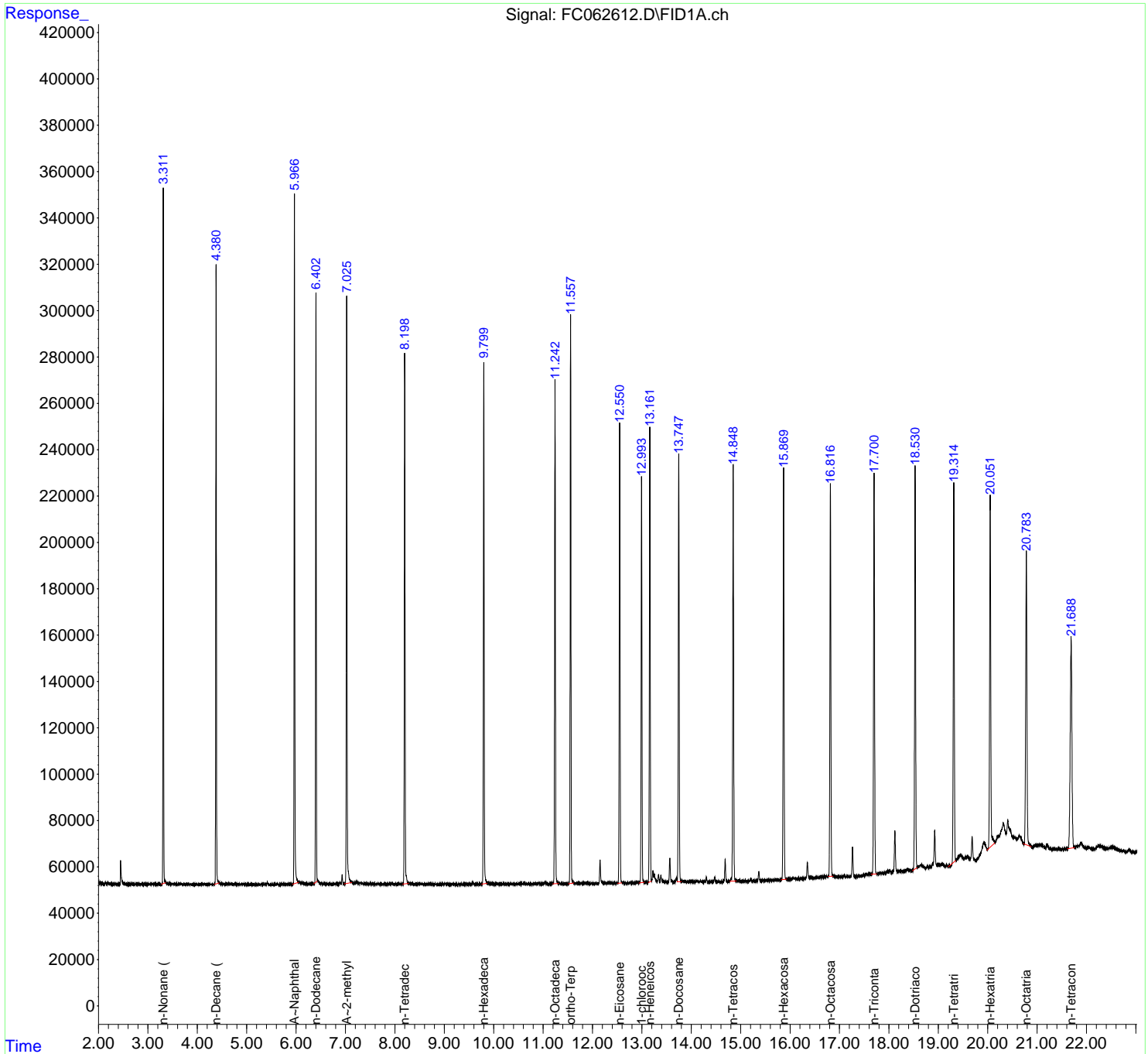
(m)=manual int.

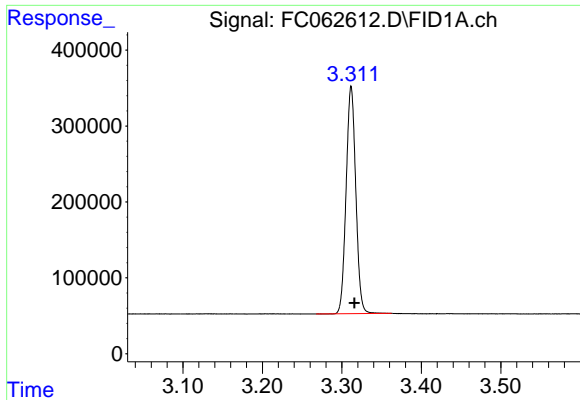
Data Path : Z:\pestpcbsrv\HPCHEM1\FID\_C\Data\FC011023AL\  
 Data File : FC062612.D  
 Signal(s) : FID1A.ch  
 Acq On : 10 Jan 2023 21:08  
 Operator : YP/AJ  
 Sample : 20 PPM ALIPHATIC HC STD  
 Misc :  
 ALS Vial : 2 Sample Multiplier: 1

Instrument :  
 FID\_C  
 ClientSampleId :  
 20 PPM ALIPHATIC HC STD

Integration File: autoint1.e  
 Quant Time: Jan 11 05:49:03 2023  
 Quant Method : Z:\pestpcbsrv\HPCHEM1\FID\_C\Method\Aliphatic EPH 010523.M  
 Quant Title : GC Extractables  
 QLast Update : Thu Jan 05 04:54:00 2023  
 Response via : Initial Calibration  
 Integrator: ChemStation

Volume Inj. : 1 ul  
 Signal Phase : Rxi-1ms  
 Signal Info : 20M x 0.18mm x 0.18um

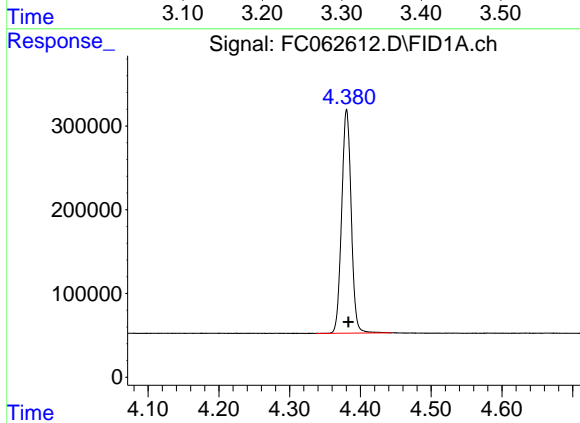




#1 n-Nonane (C9)

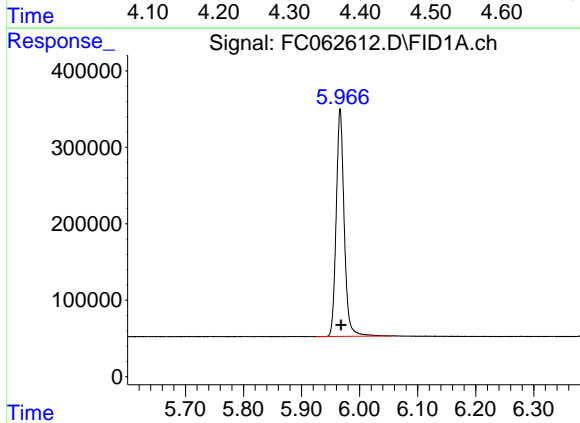
R.T.: 3.312 min  
 Delta R.T.: -0.004 min  
 Response: 2530809  
 Conc: 18.93 ug/ml

Instrument : FID\_C  
 ClientSampleId : 20 PPM ALIPHATIC HC STD



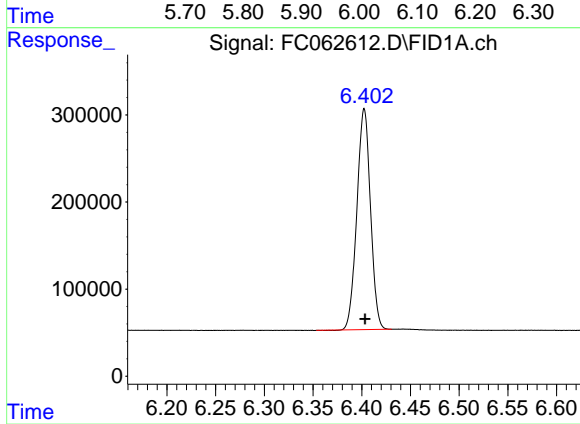
#2 n-Decane (C10)

R.T.: 4.381 min  
 Delta R.T.: -0.003 min  
 Response: 2501400  
 Conc: 19.29 ug/ml



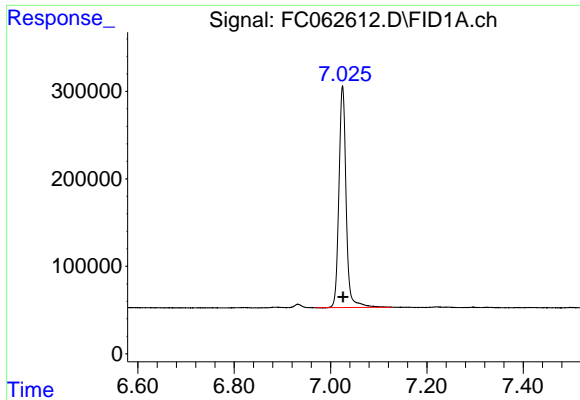
#3 A~Naphthalene (C11.7)

R.T.: 5.967 min  
 Delta R.T.: -0.001 min  
 Response: 2840032  
 Conc: 19.33 ug/ml



#4 n-Dodecane (C12)

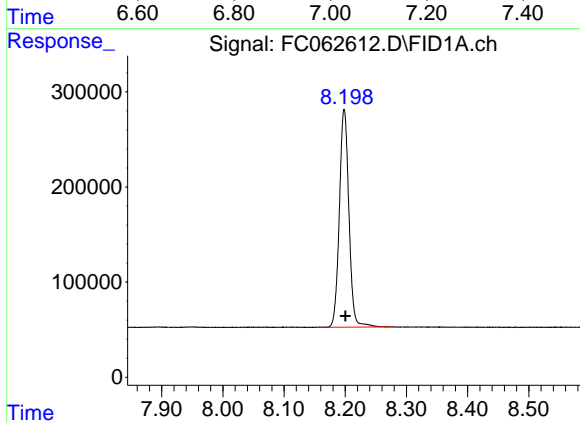
R.T.: 6.403 min  
 Delta R.T.: 0.000 min  
 Response: 2465155  
 Conc: 19.18 ug/ml



#5 A~2-methylnaphthalene (C12.89)

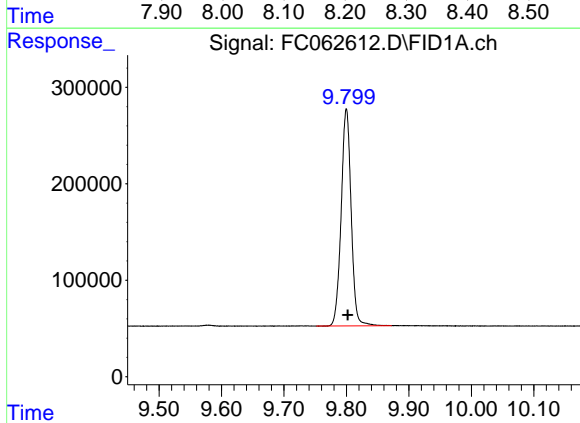
R.T.: 7.025 min  
 Delta R.T.: 0.000 min  
 Response: 2640554  
 Conc: 19.31 ug/ml

Instrument : FID\_C  
 ClientSampleId : 20 PPM ALIPHATIC HC STD



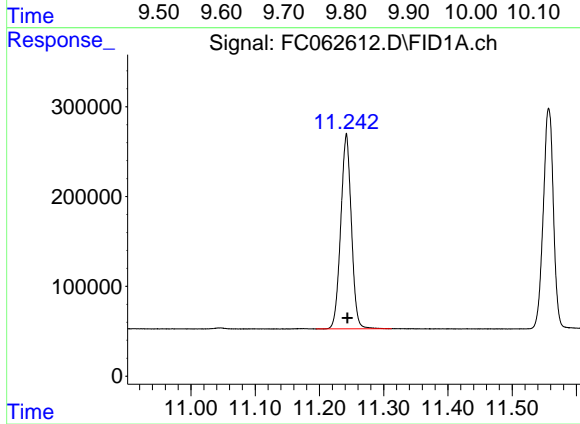
#6 n-Tetradecane (C14)

R.T.: 8.198 min  
 Delta R.T.: -0.002 min  
 Response: 2482912  
 Conc: 19.29 ug/ml



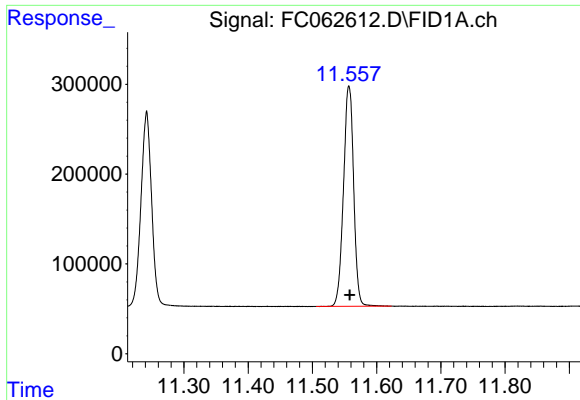
#7 n-Hexadecane (C16)

R.T.: 9.800 min  
 Delta R.T.: -0.002 min  
 Response: 2492983  
 Conc: 19.30 ug/ml



#8 n-Octadecane (C18)

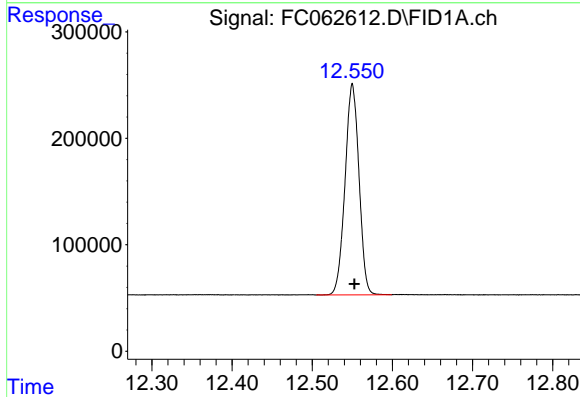
R.T.: 11.242 min  
 Delta R.T.: -0.002 min  
 Response: 2493645  
 Conc: 19.26 ug/ml



#9 ortho-Terphenyl (SURR)

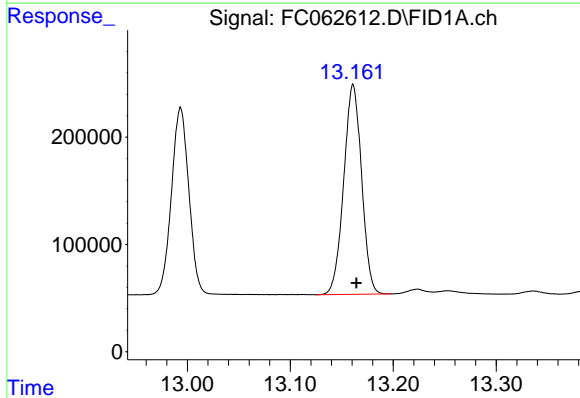
R.T.: 11.557 min  
 Delta R.T.: -0.001 min  
 Response: 2699219  
 Conc: 19.10 ug/ml

Instrument :  
 FID\_C  
 ClientSampleId :  
 20 PPM ALIPHATIC HC STD



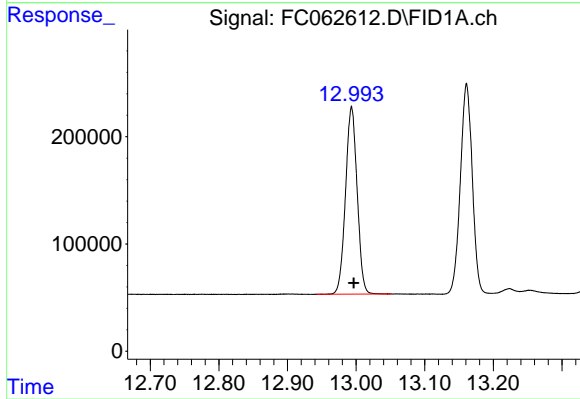
#10 n-Eicosane (C20)

R.T.: 12.550 min  
 Delta R.T.: -0.002 min  
 Response: 2393333  
 Conc: 19.39 ug/ml



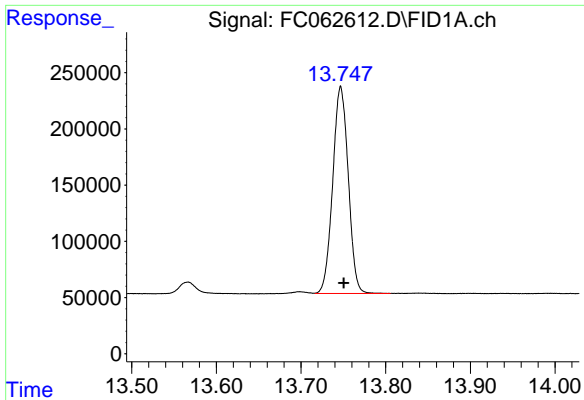
#11 n-Heneicosane (C21)

R.T.: 13.161 min  
 Delta R.T.: -0.003 min  
 Response: 2361898  
 Conc: 19.27 ug/ml



#12 1-chlorooctadecane (SURR)

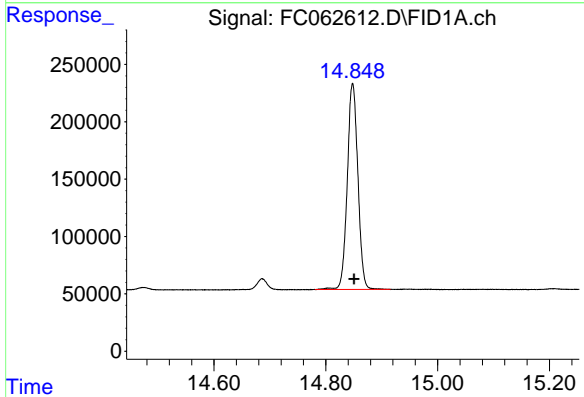
R.T.: 12.993 min  
 Delta R.T.: -0.003 min  
 Response: 2054828  
 Conc: 19.51 ug/ml



#13 n-Docosane (C22)

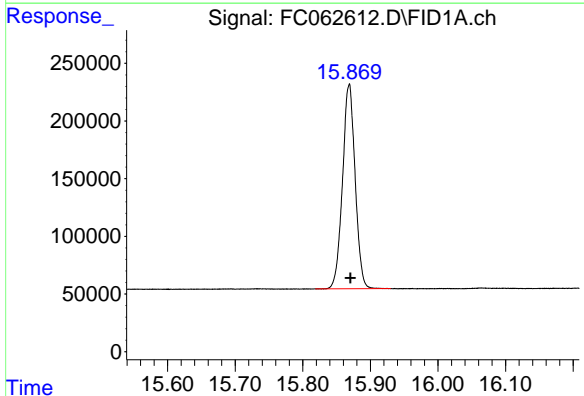
R.T.: 13.747 min  
Delta R.T.: -0.003 min  
Response: 2347530  
Conc: 19.64 ug/ml

Instrument :  
FID\_C  
ClientSampleId :  
20 PPM ALIPHATIC HC STD



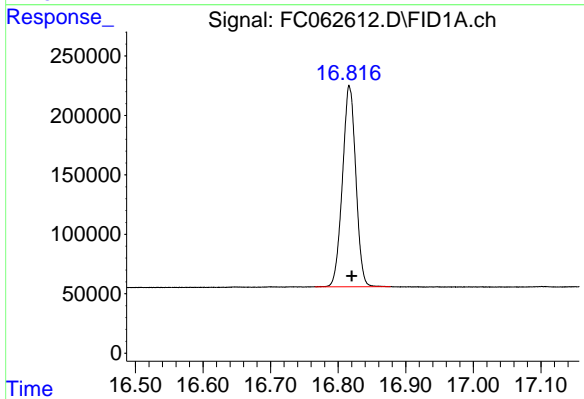
#14 n-Tetracosane (C24)

R.T.: 14.848 min  
Delta R.T.: -0.003 min  
Response: 2368904  
Conc: 20.34 ug/ml



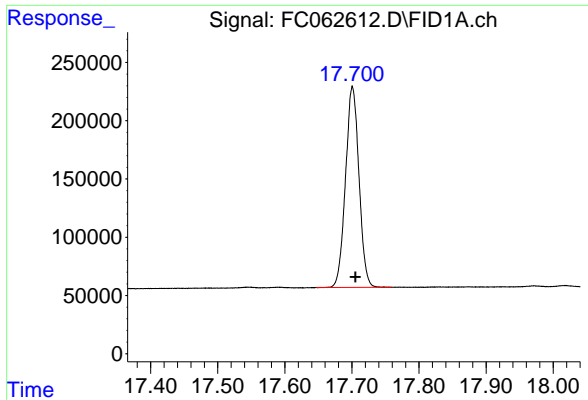
#15 n-Hexacosane (C26)

R.T.: 15.869 min  
Delta R.T.: -0.002 min  
Response: 2305257  
Conc: 20.52 ug/ml



#16 n-Octacosane (C28)

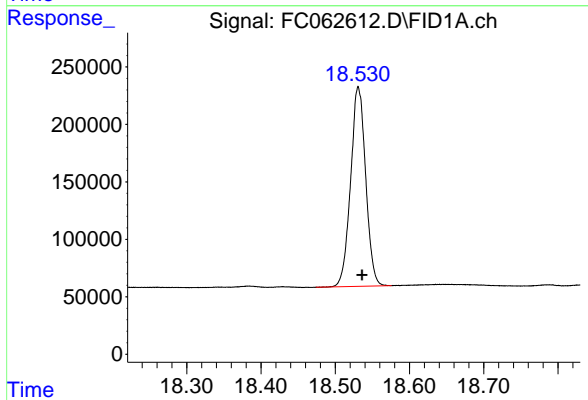
R.T.: 16.817 min  
Delta R.T.: -0.003 min  
Response: 2323727  
Conc: 21.16 ug/ml



#17 n-Tricontane (C30)

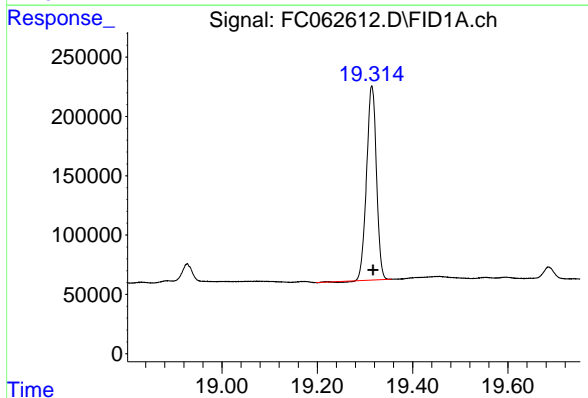
R.T.: 17.701 min  
Delta R.T.: -0.004 min  
Response: 2404304  
Conc: 22.20 ug/ml

Instrument :  
FID\_C  
ClientSampleId :  
20 PPM ALIPHATIC HC STD



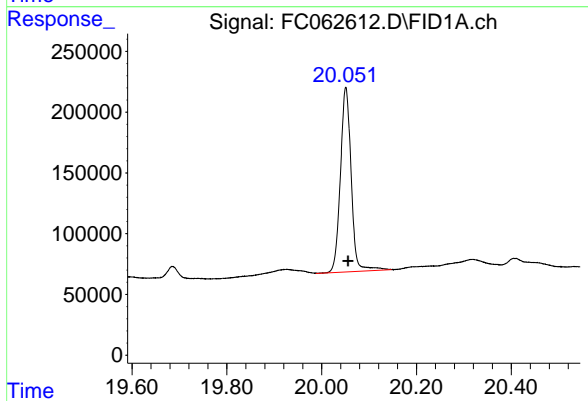
#18 n-Dotriacontane (C32)

R.T.: 18.531 min  
Delta R.T.: -0.005 min  
Response: 2446696  
Conc: 22.41 ug/ml



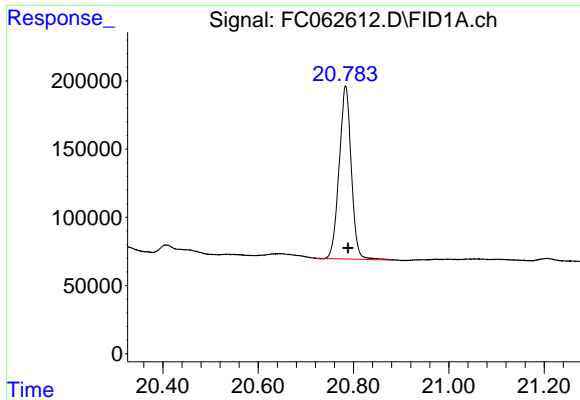
#19 n-Tetratriacontane (C34)

R.T.: 19.314 min  
Delta R.T.: -0.003 min  
Response: 2350916  
Conc: 21.62 ug/ml



#20 n-Hexatriacontane (C36)

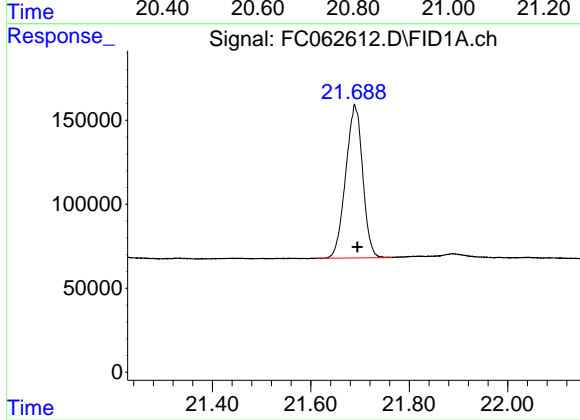
R.T.: 20.051 min  
Delta R.T.: -0.005 min  
Response: 2394134  
Conc: 21.52 ug/ml



#21 n-Octatriacontane (C38)

R.T.: 20.784 min  
 Delta R.T.: -0.005 min  
 Response: 2240216  
 Conc: 21.15 ug/ml

Instrument :  
 FID\_C  
 ClientSampleId :  
 20 PPM ALIPHATIC HC STD



#22 n-Tetracontane (C40)

R.T.: 21.689 min  
 Delta R.T.: -0.006 min  
 Response: 2176980  
 Conc: 20.44 ug/ml