

Data Path : Z:\pestpcbsrv\HPCHEM1\FID_C\Data\FC011119AL\
 Data File : FC038597.D
 Signal(s) : FID1A.CH
 Acq On : 12 Jan 2019 1:16
 Operator : AJ\SJ
 Sample : PB116251BL
 Misc :
 ALS Vial : 28 Sample Multiplier: 1

Integration File: autoint1.e
 Quant Time: Jan 12 02:22:43 2019
 Quant Method : Z:\pestpcbsrv\HPCHEM1\FID_C\Method\Alaphatic EPH 010919.M
 Quant Title : GC Extractables
 QLast Update : Thu Jan 10 05:47:13 2019
 Response via : Initial Calibration
 Integrator: ChemStation 6890 Scale Mode: Large solvent peaks clipped

Volume Inj. : 1 ul
 Signal Phase : Rxi-1ms
 Signal Info : 20M x 0.18mm x 0.18um

Compound	R.T.	Response	Conc Units

System Monitoring Compounds			
12) S 1-chlorooctadecane (S...	12.698	3570893	45.233 ug/ml
Spiked Amount	50.000	Recovery	= 90.47%

Target Compounds

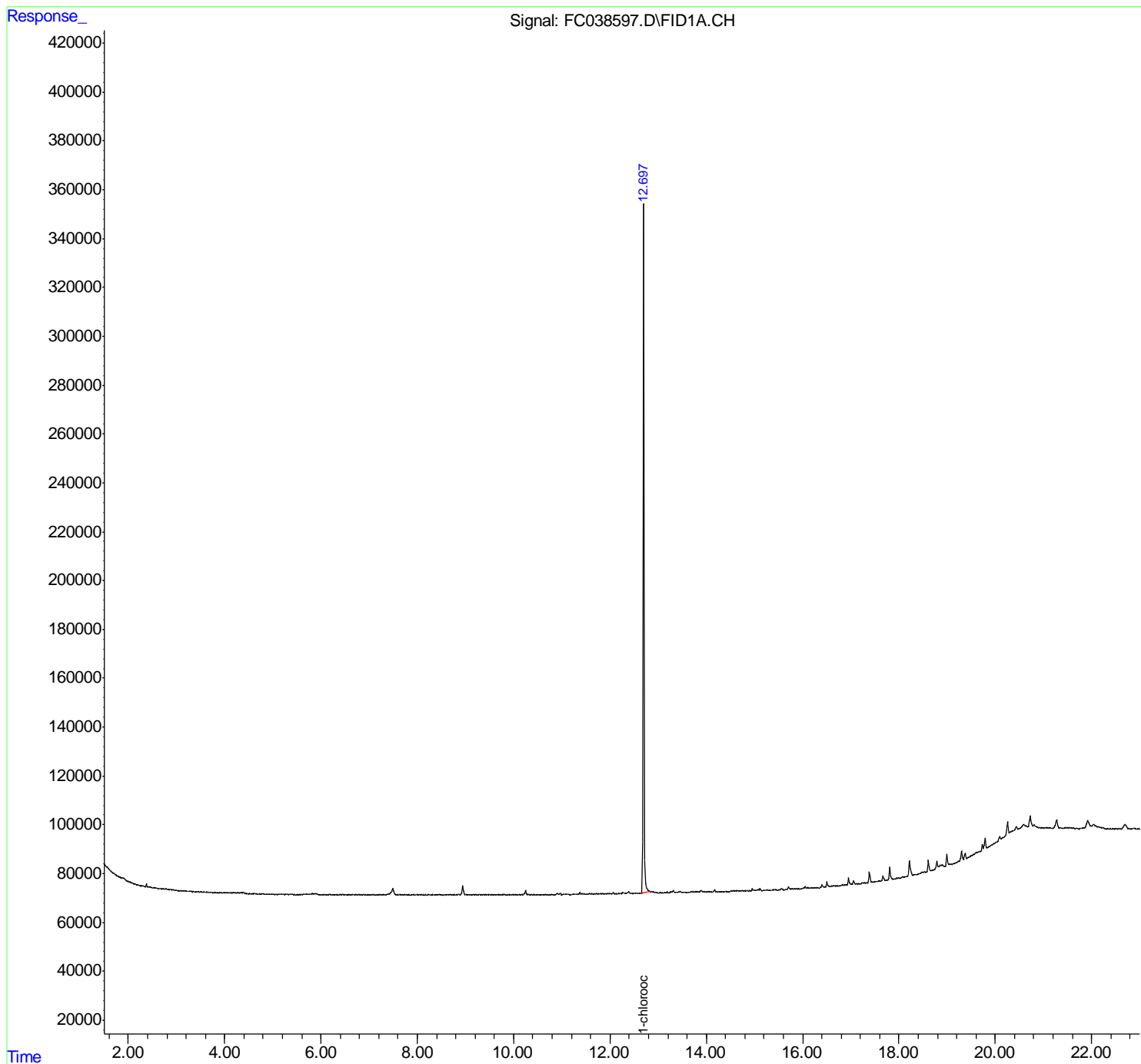
(f)=RT Delta > 1/2 Window

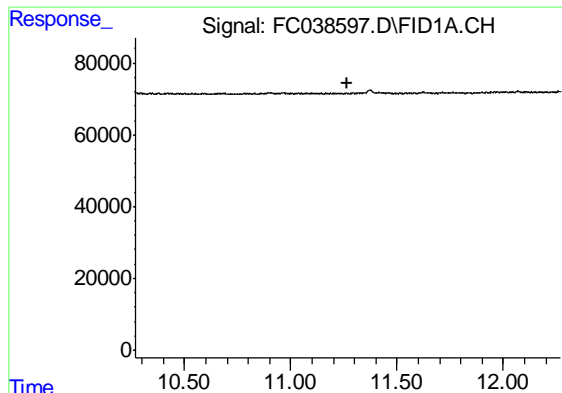
(m)=manual int.

Data Path : Z:\pestpcbsrv\HPCHEM1\FID_C\Data\FC011119AL\
 Data File : FC038597.D
 Signal(s) : FID1A.CH
 Acq On : 12 Jan 2019 1:16
 Operator : AJ\SJ
 Sample : PB116251BL
 Misc :
 ALS Vial : 28 Sample Multiplier: 1

Integration File: autoint1.e
 Quant Time: Jan 12 02:22:43 2019
 Quant Method : Z:\pestpcbsrv\HPCHEM1\FID_C\Method\Alaphatic EPH 010919.M
 Quant Title : GC Extractables
 QLast Update : Thu Jan 10 05:47:13 2019
 Response via : Initial Calibration
 Integrator: ChemStation 6890 Scale Mode: Large solvent peaks clipped

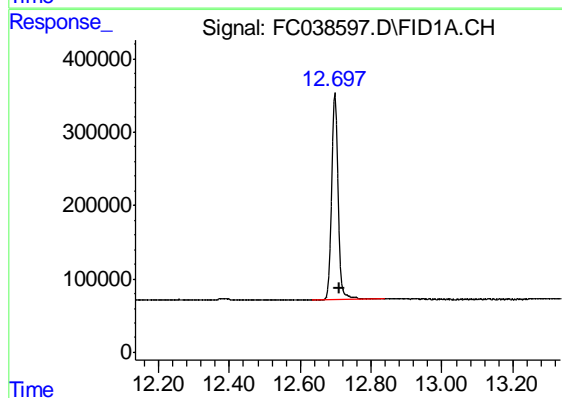
Volume Inj. : 1 ul
 Signal Phase : Rxi-1ms
 Signal Info : 20M x 0.18mm x 0.18um





#9 ortho-Terphenyl (SURR)

R.T.: 0.000 min
Exp R.T. : 11.269 min
Response: 0
Conc: N.D.



#12 1-chlorooctadecane (SURR)

R.T.: 12.698 min
Delta R.T.: -0.014 min
Response: 3570893
Conc: 45.23 ug/ml