

Data Path : Z:\pestpcbsrv\HPCHEM1\FID_C\Data\FC011122AL\
 Data File : FC057825.D
 Signal(s) : FID1A.CH
 Acq On : 11 Jan 2022 13:22
 Operator : AJ\MA
 Sample : I.BLK
 Misc :
 ALS Vial : 1 Sample Multiplier: 1

Instrument :
 FID_C
 ClientSampleId :

Integration File: autoint1.e
 Quant Time: Jan 11 23:56:13 2022
 Quant Method : Z:\pestpcbsrv\HPCHEM1\FID_C\Method\Aliphatic EPH 010522.M
 Quant Title : GC Extractables
 QLast Update : Wed Jan 05 12:13:43 2022
 Response via : Initial Calibration
 Integrator: ChemStation 6890 Scale Mode: Large solvent peaks clipped

Volume Inj. : 1 ul
 Signal Phase : Rxi-1ms
 Signal Info : 20M x 0.18mm x 0.18um

Compound	R.T.	Response	Conc Units

System Monitoring Compounds			
Target Compounds			
17) T n-Tricontane (C30)	16.837	186771	1.196 ug/ml
18) T n-Dotriacontane (C32)	17.667	219099	1.571 ug/ml
19) T n-Tetratriacontane (C34)	18.448	159494	1.283 ug/ml
20) T n-Hexatriacontane (C36)	19.184	111496	1.003 ug/ml

(f)=RT Delta > 1/2 Window

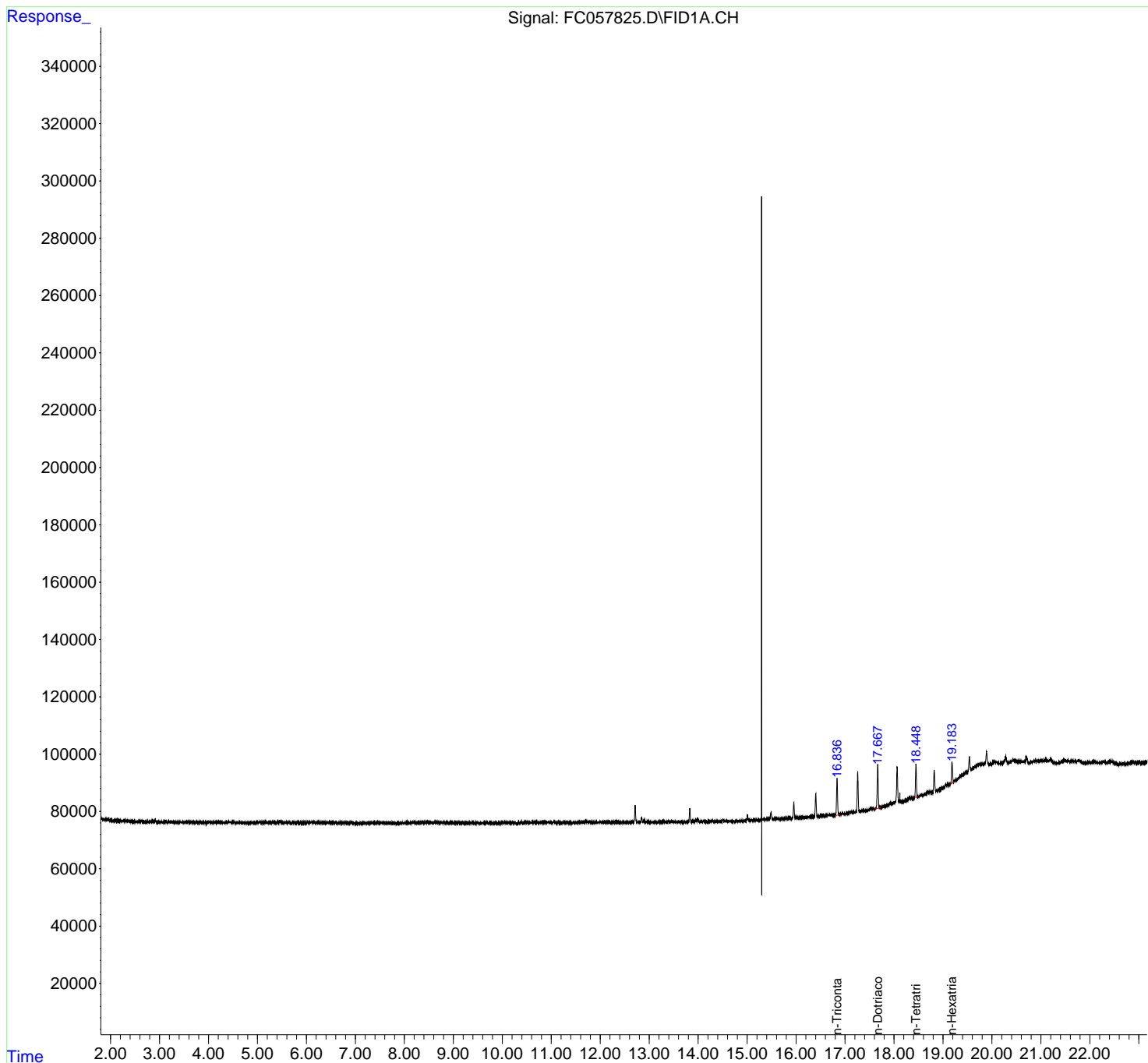
(m)=manual int.

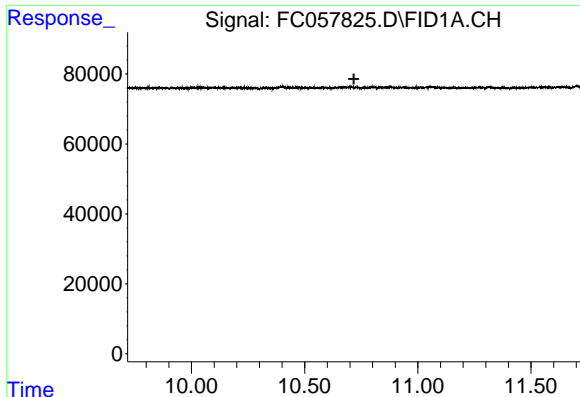
Data Path : Z:\pestpcbsrv\HPCHEM1\FID_C\Data\FC011122AL\
Data File : FC057825.D
Signal(s) : FID1A.CH
Acq On : 11 Jan 2022 13:22
Operator : AJ\MA
Sample : I.BLK
Misc :
ALS Vial : 1 Sample Multiplier: 1

Instrument :
FID_C
ClientSampleId :

Integration File: autoint1.e
Quant Time: Jan 11 23:56:13 2022
Quant Method : Z:\pestpcbsrv\HPCHEM1\FID_C\Method\Aliphatic EPH 010522.M
Quant Title : GC Extractables
QLast Update : Wed Jan 05 12:13:43 2022
Response via : Initial Calibration
Integrator: ChemStation 6890 Scale Mode: Large solvent peaks clipped

Volume Inj. : 1 ul
Signal Phase : Rxi-1ms
Signal Info : 20M x 0.18mm x 0.18um

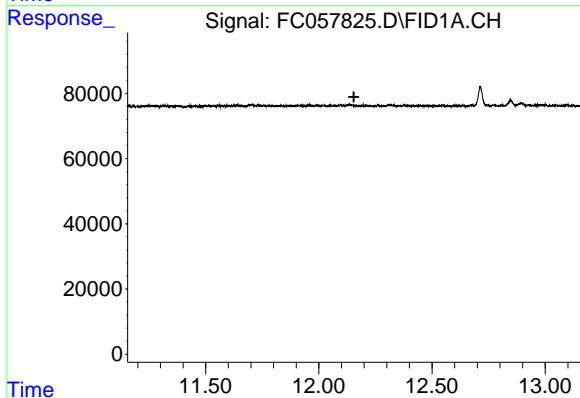




#9 ortho-Terphenyl (SURR)

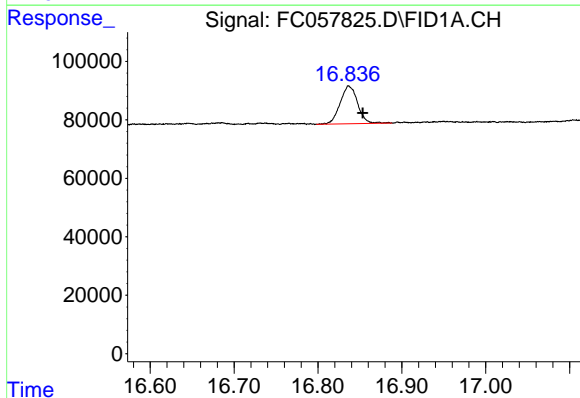
R.T.: 0.000 min
 Exp R.T. : 10.717 min
 Response: 0
 Conc: N.D.

Instrument :
 FID_C
 ClientSampleId :



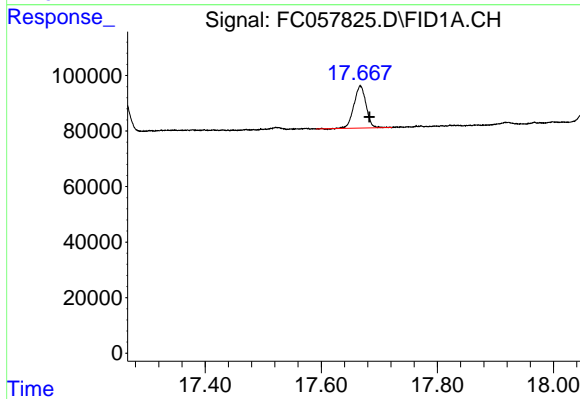
#12 1-chlorooctadecane (SURR)

R.T.: 0.000 min
 Exp R.T. : 12.155 min
 Response: 0
 Conc: N.D.



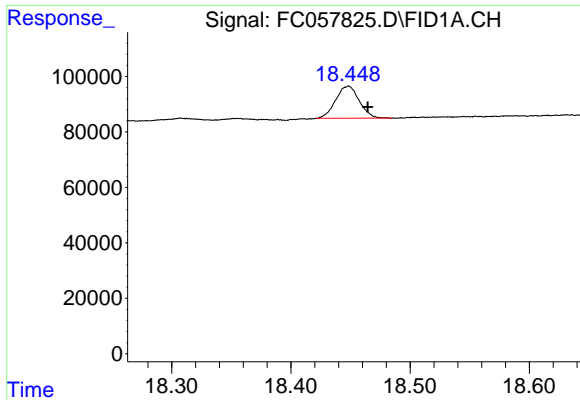
#17 n-Tricontane (C30)

R.T.: 16.837 min
 Delta R.T.: -0.016 min
 Response: 186771
 Conc: 1.20 ug/ml



#18 n-Dotriacontane (C32)

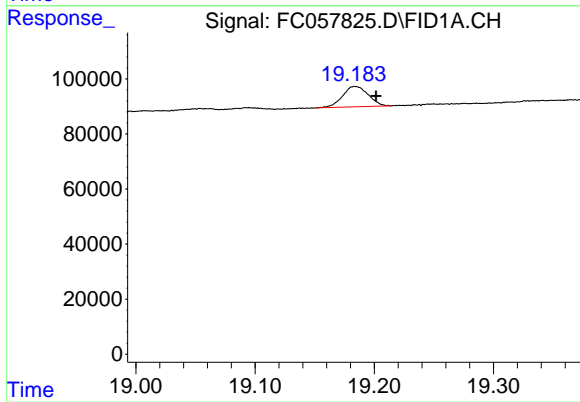
R.T.: 17.667 min
 Delta R.T.: -0.016 min
 Response: 219099
 Conc: 1.57 ug/ml



#19 n-Tetratriacontane (C34)

R.T.: 18.448 min
Delta R.T.: -0.017 min
Response: 159494
Conc: 1.28 ug/ml

Instrument :
FID_C
ClientSampleId :



#20 n-Hexatriacontane (C36)

R.T.: 19.184 min
Delta R.T.: -0.017 min
Response: 111496
Conc: 1.00 ug/ml