

Data Path : Z:\pestpcbsrv\HPCHEM1\FID_C\Data\FC011223AL\
 Data File : FC062636.D
 Signal(s) : FID1A.ch
 Acq On : 12 Jan 2023 22:48
 Operator : YP/AJ
 Sample : 01056-05D
 Misc :
 ALS Vial : 14 Sample Multiplier: 1

Instrument :
 FID_C
 ClientSampleId :
 T-5

Integration File: autoint1.e
 Quant Time: Jan 13 02:34:43 2023
 Quant Method : Z:\pestpcbsrv\HPCHEM1\FID_C\Method\Aliphatic EPH 010523.M
 Quant Title : GC Extractables
 QLast Update : Thu Jan 05 04:54:00 2023
 Response via : Initial Calibration
 Integrator: ChemStation

Volume Inj. : 1 ul
 Signal Phase : Rxi-1ms
 Signal Info : 20M x 0.18mm x 0.18um

Compound	R.T.	Response	Conc Units

System Monitoring Compounds			
12) S 1-chlorooctadecane (S...	12.997	3680342	34.938 ug/ml
Spiked Amount	50.000	Recovery	= 69.88%

Target Compounds

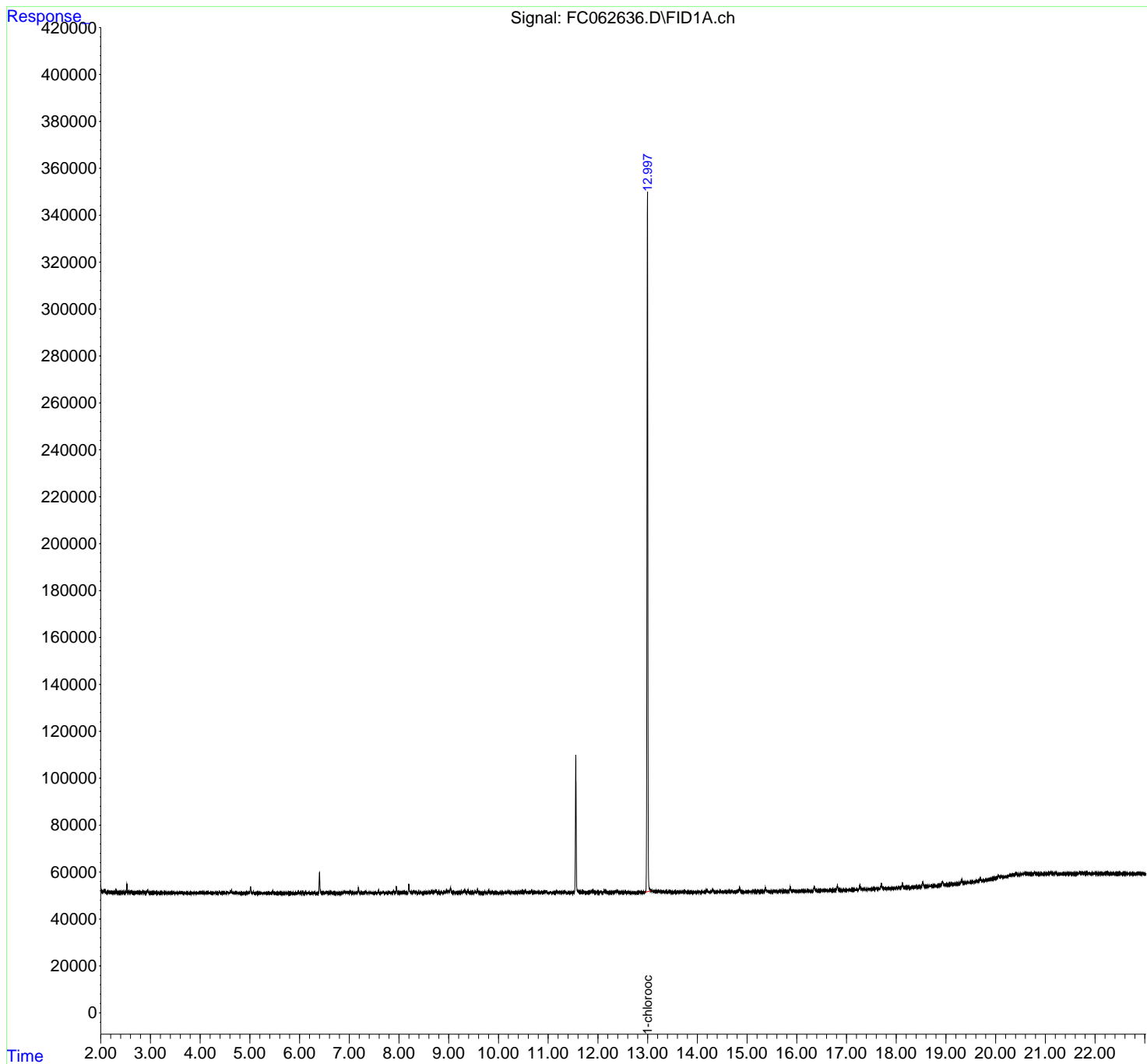
(f)=RT Delta > 1/2 Window (m)=manual int.

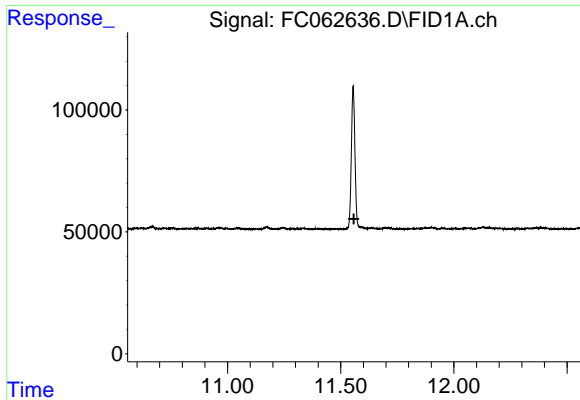
Data Path : Z:\pestpcbsrv\HPCHEM1\FID_C\Data\FC011223AL\
Data File : FC062636.D
Signal(s) : FID1A.ch
Acq On : 12 Jan 2023 22:48
Operator : YP/AJ
Sample : 01056-05D
Misc :
ALS Vial : 14 Sample Multiplier: 1

Instrument :
FID_C
ClientSampleId :
T-5

Integration File: autoint1.e
Quant Time: Jan 13 02:34:43 2023
Quant Method : Z:\pestpcbsrv\HPCHEM1\FID_C\Method\Aliphatic EPH 010523.M
Quant Title : GC Extractables
QLast Update : Thu Jan 05 04:54:00 2023
Response via : Initial Calibration
Integrator: ChemStation

Volume Inj. : 1 ul
Signal Phase : Rxi-1ms
Signal Info : 20M x 0.18mm x 0.18um

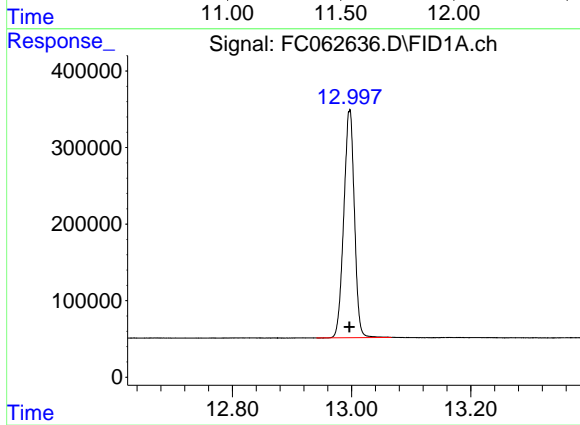




#9 ortho-Terphenyl (SURR)

R.T.: 0.000 min
Exp R.T.: 11.558 min
Response: 0
Conc: N.D.

Instrument :
FID_C
ClientSampleId :
T-5



#12 1-chlorooctadecane (SURR)

R.T.: 12.997 min
Delta R.T.: 0.000 min
Response: 3680342
Conc: 34.94 ug/ml