

Data Path : Z:\pestpcbsrv\HPCHEM1\FID_C\Data\FC011322AL\
 Data File : FC057917.D
 Signal(s) : FID1A.CH
 Acq On : 14 Jan 2022 14:23
 Operator : AJ\MA
 Sample : 20 PPM ALIPHATIC HC STD
 Misc :
 ALS Vial : 2 Sample Multiplier: 1

Instrument :
 FID_C
 ClientSampleId :
 20 PPM ALIPHATIC HC STD

Integration File: sample.E
 Quant Time: Jan 14 14:46:58 2022
 Quant Method : Z:\pestpcbsrv\HPCHEM1\FID_C\Method\Aliphatic EPH 010522.M
 Quant Title : GC Extractables
 QLast Update : Wed Jan 05 12:13:43 2022
 Response via : Initial Calibration
 Integrator: ChemStation 6890 Scale Mode: Large solvent peaks clipped

Volume Inj. : 1 ul
 Signal Phase : Rxi-1ms
 Signal Info : 20M x 0.18mm x 0.18um

Compound	R.T.	Response	Conc Units

System Monitoring Compounds			
9) S ortho-Terphenyl (SURR)	10.706	3564775	18.435 ug/ml
Spiked Amount	50.000	Recovery	= 36.87%
12) S 1-chlorooctadecane (S...	12.144	2698024	18.306 ug/ml
Spiked Amount	50.000	Recovery	= 36.61%
Target Compounds			
1) T n-Nonane (C9)	2.634	3051662	19.083 ug/ml
2) T n-Decane (C10)	3.624	3140258	19.537 ug/ml
3) T A~Naphthalene (C11.7)	5.162	3549441	19.547 ug/ml
4) T n-Dodecane (C12)	5.596	3179850	19.717 ug/ml
5) T A~2-methylnaphthalene...	6.203	3579773	19.576 ug/ml
6) T n-Tetradecane (C14)	7.377	3263149	19.766 ug/ml
7) T n-Hexadecane (C16)	8.969	3290805	19.701 ug/ml
8) T n-Octadecane (C18)	10.402	3317710	19.279 ug/ml
10) T n-Eicosane (C20)	11.705	3195081	18.663 ug/ml
11) T n-Heneicosane (C21)	12.314	3157624	18.260 ug/ml
13) T n-Docosane (C22)	12.898	3094325	17.886 ug/ml
14) T n-Tetracosane (C24)	13.995	3042058	17.573 ug/ml
15) T n-Hexacosane (C26)	15.012	2920461	17.354 ug/ml
16) T n-Octacosane (C28)	15.958	2999914	18.332 ug/ml
17) T n-Tricontane (C30)	16.844	3197832	20.483 ug/ml
18) T n-Dotriacontane (C32)	17.673	3115780	22.347 ug/ml
19) T n-Tetratriacontane (C34)	18.456	2776342	22.338 ug/ml
20) T n-Hexatriacontane (C36)	19.192	2495673	22.447 ug/ml
21) T n-Octatriacontane (C38)	19.899	2282694	21.883 ug/ml
22) T n-Tetracontane (C40)	20.727	2223136	23.218 ug/ml

(f)=RT Delta > 1/2 Window

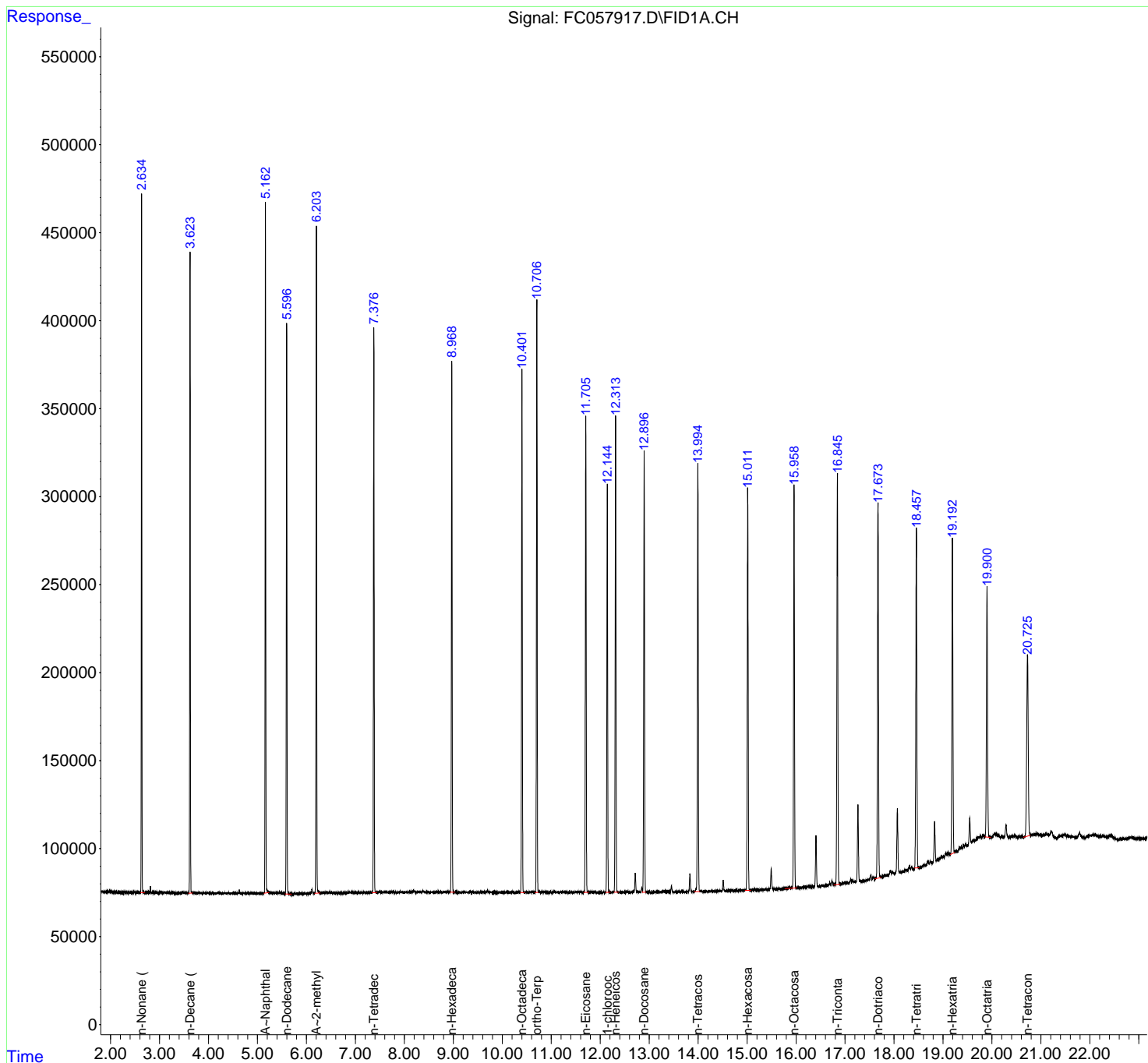
(m)=manual int.

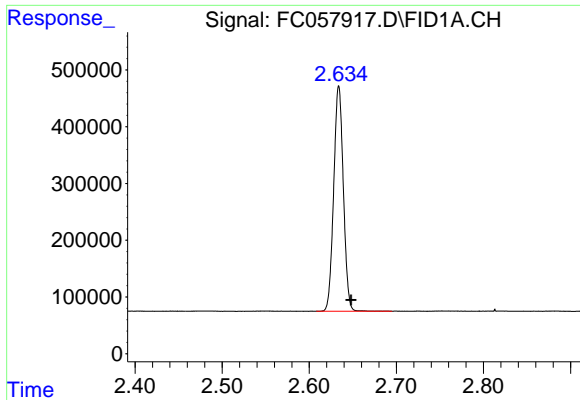
Data Path : Z:\pestpcbsrv\HPCHEM1\FID_C\Data\FC011322AL\
 Data File : FC057917.D
 Signal(s) : FID1A.CH
 Acq On : 14 Jan 2022 14:23
 Operator : AJ\MA
 Sample : 20 PPM ALIPHATIC HC STD
 Misc :
 ALS Vial : 2 Sample Multiplier: 1

Instrument :
 FID_C
 ClientSampleId :
 20 PPM ALIPHATIC HC STD

Integration File: sample.E
 Quant Time: Jan 14 14:46:58 2022
 Quant Method : Z:\pestpcbsrv\HPCHEM1\FID_C\Method\Aliphatic EPH 010522.M
 Quant Title : GC Extractables
 QLast Update : Wed Jan 05 12:13:43 2022
 Response via : Initial Calibration
 Integrator: ChemStation 6890 Scale Mode: Large solvent peaks clipped

Volume Inj. : 1 ul
 Signal Phase : Rxi-1ms
 Signal Info : 20M x 0.18mm x 0.18um

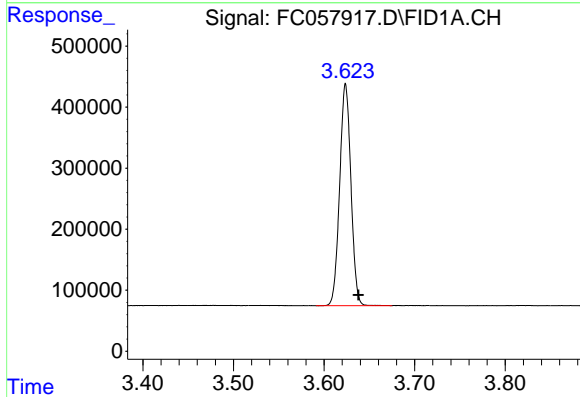




#1 n-Nonane (C9)

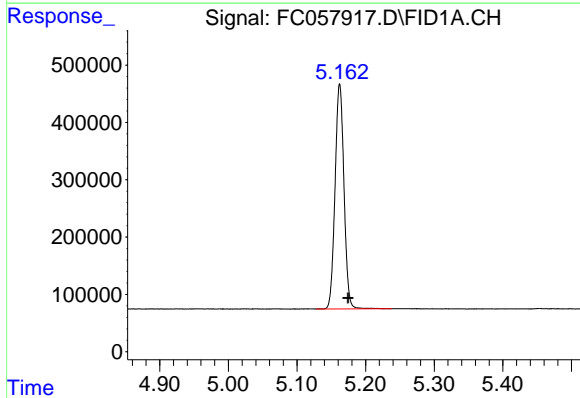
R.T.: 2.634 min
 Delta R.T.: -0.014 min
 Response: 3051662
 Conc: 19.08 ug/ml

Instrument : FID_C
 ClientSampleId : 20 PPM ALIPHATIC HC STD



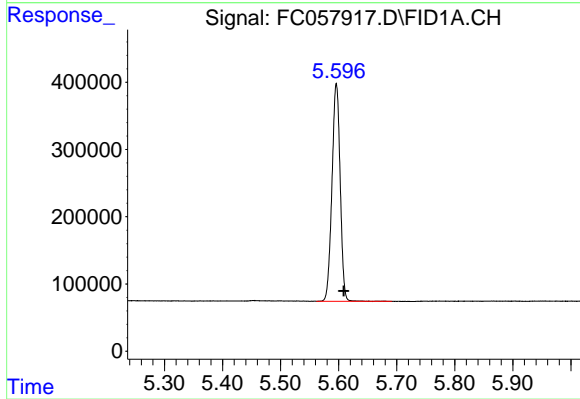
#2 n-Decane (C10)

R.T.: 3.624 min
 Delta R.T.: -0.014 min
 Response: 3140258
 Conc: 19.54 ug/ml



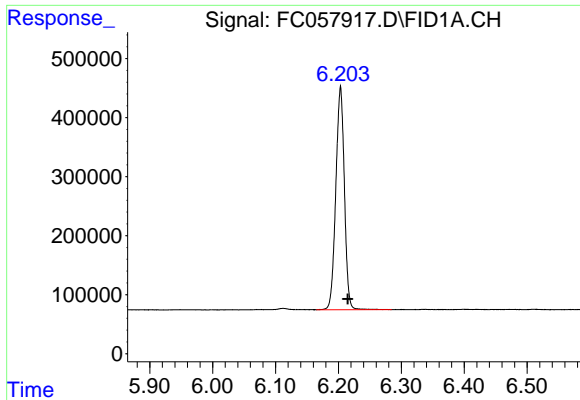
#3 A~Naphthalene (C11.7)

R.T.: 5.162 min
 Delta R.T.: -0.012 min
 Response: 3549441
 Conc: 19.55 ug/ml



#4 n-Dodecane (C12)

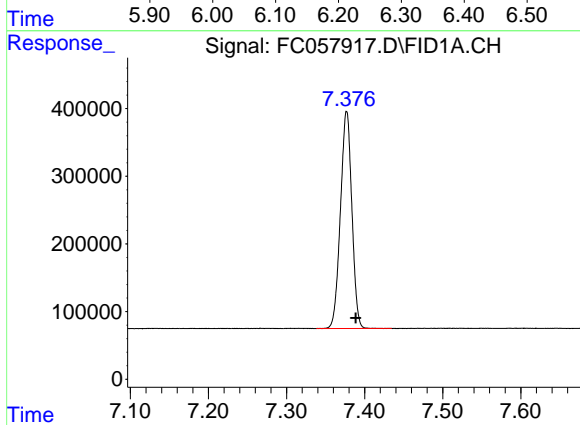
R.T.: 5.596 min
 Delta R.T.: -0.013 min
 Response: 3179850
 Conc: 19.72 ug/ml



#5 A~2-methylnaphthalene (C12.89)

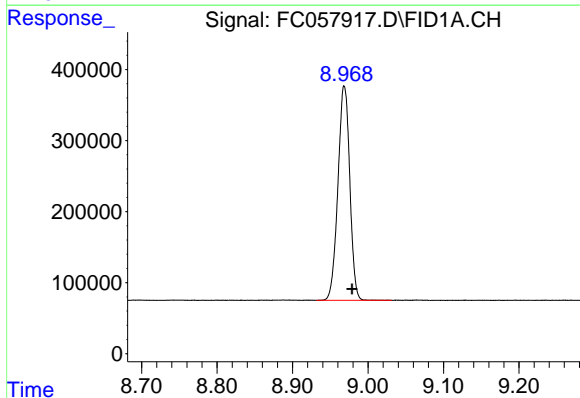
R.T.: 6.203 min
 Delta R.T.: -0.011 min
 Response: 3579773
 Conc: 19.58 ug/ml

Instrument :
 FID_C
 ClientSampleId :
 20 PPM ALIPHATIC HC STD



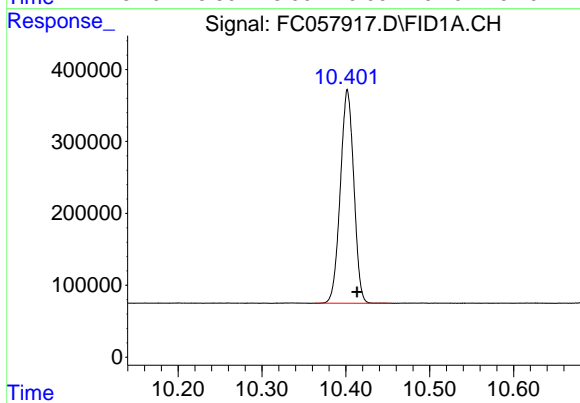
#6 n-Tetradecane (C14)

R.T.: 7.377 min
 Delta R.T.: -0.012 min
 Response: 3263149
 Conc: 19.77 ug/ml



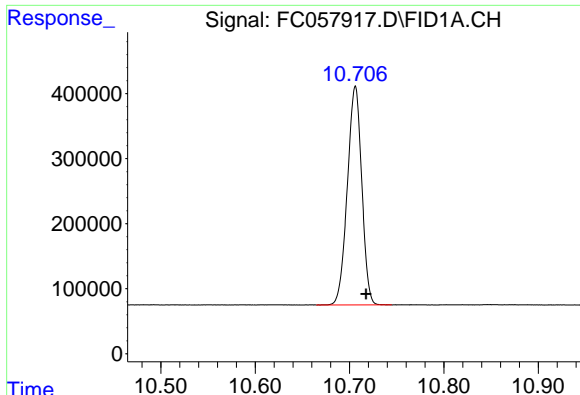
#7 n-Hexadecane (C16)

R.T.: 8.969 min
 Delta R.T.: -0.010 min
 Response: 3290805
 Conc: 19.70 ug/ml



#8 n-Octadecane (C18)

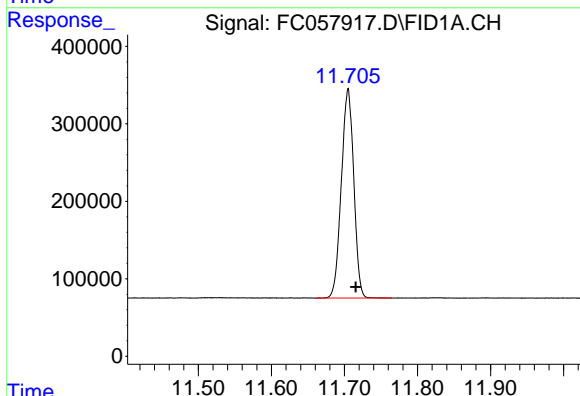
R.T.: 10.402 min
 Delta R.T.: -0.011 min
 Response: 3317710
 Conc: 19.28 ug/ml



#9 ortho-Terphenyl (SURR)

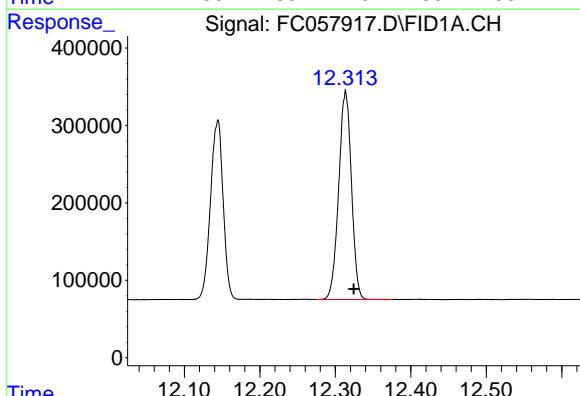
R.T.: 10.706 min
 Delta R.T.: -0.011 min
 Response: 3564775
 Conc: 18.44 ug/ml

Instrument :
 FID_C
 ClientSampleId :
 20 PPM ALIPHATIC HC STD



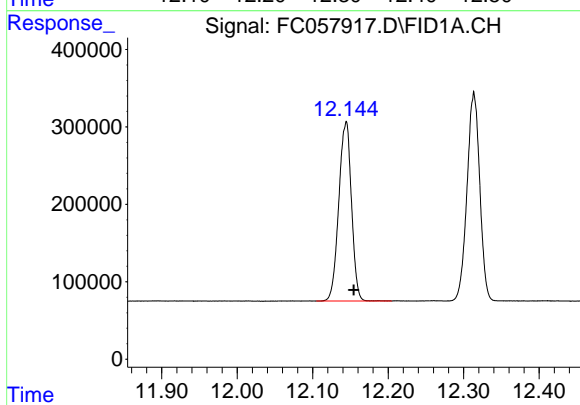
#10 n-Eicosane (C20)

R.T.: 11.705 min
 Delta R.T.: -0.011 min
 Response: 3195081
 Conc: 18.66 ug/ml



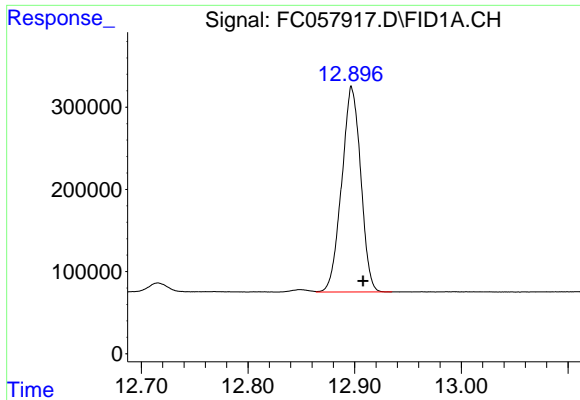
#11 n-Heneicosane (C21)

R.T.: 12.314 min
 Delta R.T.: -0.011 min
 Response: 3157624
 Conc: 18.26 ug/ml



#12 1-chlorooctadecane (SURR)

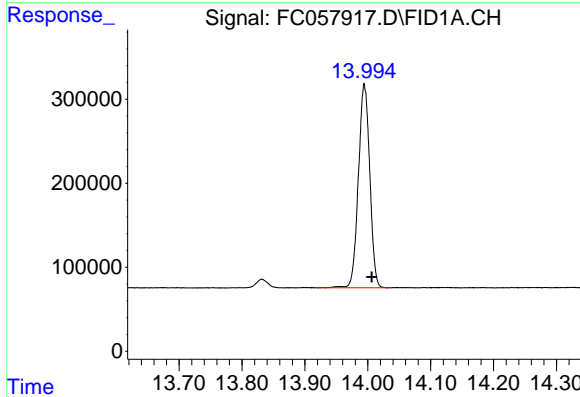
R.T.: 12.144 min
 Delta R.T.: -0.011 min
 Response: 2698024
 Conc: 18.31 ug/ml



#13 n-Docosane (C22)

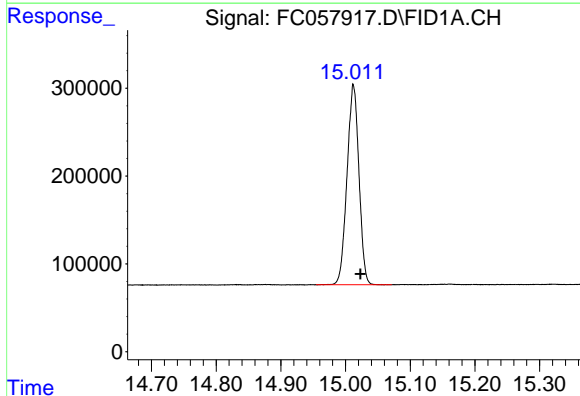
R.T.: 12.898 min
Delta R.T.: -0.010 min
Response: 3094325
Conc: 17.89 ug/ml

Instrument :
FID_C
ClientSampleId :
20 PPM ALIPHATIC HC STD



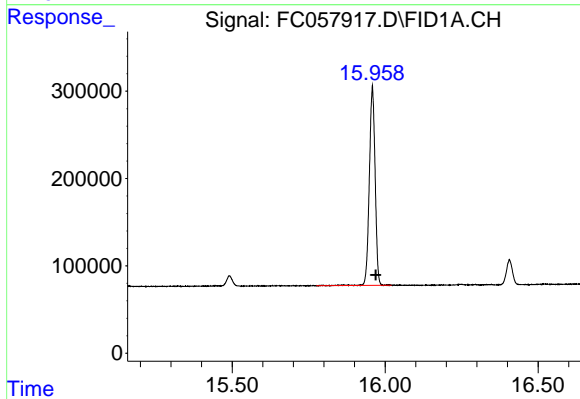
#14 n-Tetracosane (C24)

R.T.: 13.995 min
Delta R.T.: -0.012 min
Response: 3042058
Conc: 17.57 ug/ml



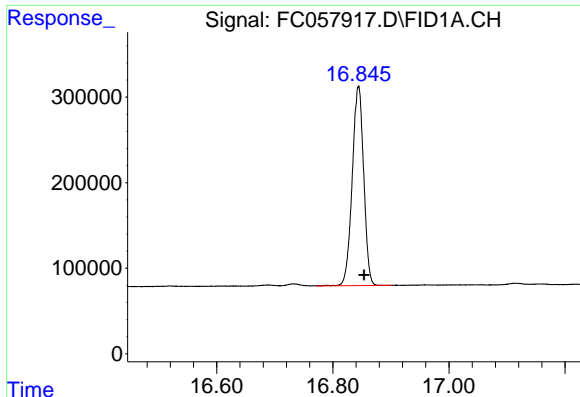
#15 n-Hexacosane (C26)

R.T.: 15.012 min
Delta R.T.: -0.011 min
Response: 2920461
Conc: 17.35 ug/ml



#16 n-Octacosane (C28)

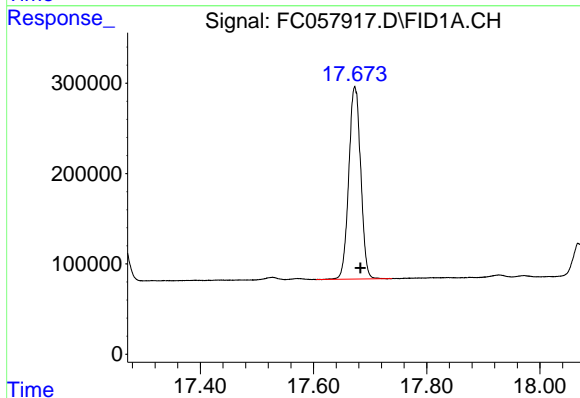
R.T.: 15.958 min
Delta R.T.: -0.011 min
Response: 2999914
Conc: 18.33 ug/ml



#17 n-Tricontane (C30)

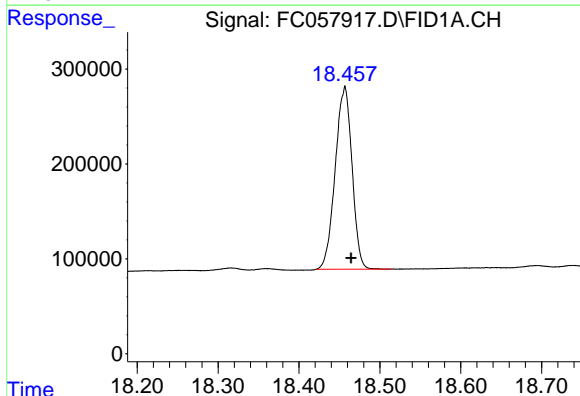
R.T.: 16.844 min
 Delta R.T.: -0.010 min
 Response: 3197832
 Conc: 20.48 ug/ml

Instrument :
 FID_C
 ClientSampleId :
 20 PPM ALIPHATIC HC STD



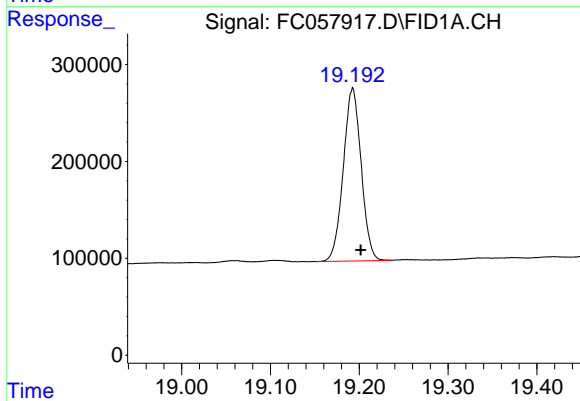
#18 n-Dotriacontane (C32)

R.T.: 17.673 min
 Delta R.T.: -0.010 min
 Response: 3115780
 Conc: 22.35 ug/ml



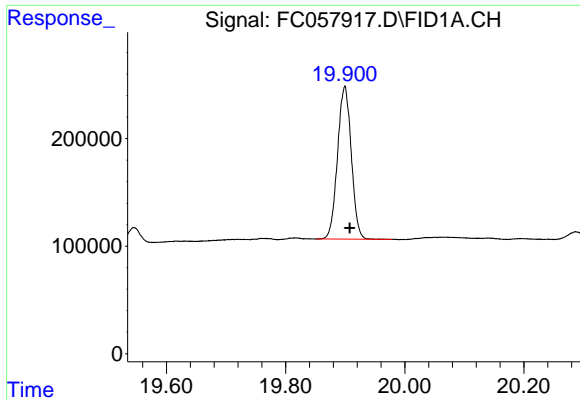
#19 n-Tetratriacontane (C34)

R.T.: 18.456 min
 Delta R.T.: -0.008 min
 Response: 2776342
 Conc: 22.34 ug/ml



#20 n-Hexatriacontane (C36)

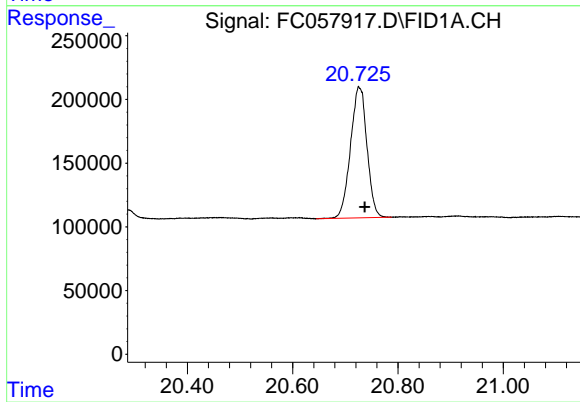
R.T.: 19.192 min
 Delta R.T.: -0.009 min
 Response: 2495673
 Conc: 22.45 ug/ml



#21 n-Octatriacontane (C38)

R.T.: 19.899 min
Delta R.T.: -0.008 min
Response: 2282694
Conc: 21.88 ug/ml

Instrument :
FID_C
ClientSampleId :
20 PPM ALIPHATIC HC STD



#22 n-Tetracontane (C40)

R.T.: 20.727 min
Delta R.T.: -0.010 min
Response: 2223136
Conc: 23.22 ug/ml