

Data Path : Z:\pestpcbsrv\HPCHEM1\FID_C\Data\FC011419AL\
 Data File : FC038625.D
 Signal(s) : FID1A.CH
 Acq On : 14 Jan 2019 21:16
 Operator : AJ\SJ
 Sample : K1139-01
 Misc :
 ALS Vial : 6 Sample Multiplier: 1

Integration File: autoint1.e
 Quant Time: Jan 14 23:38:59 2019
 Quant Method : Z:\pestpcbsrv\HPCHEM1\FID_C\Method\Alaphatic EPH 010919.M
 Quant Title : GC Extractables
 QLast Update : Thu Jan 10 05:47:13 2019
 Response via : Initial Calibration
 Integrator: ChemStation 6890 Scale Mode: Large solvent peaks clipped

Volume Inj. : 1 ul
 Signal Phase : Rxi-1ms
 Signal Info : 20M x 0.18mm x 0.18um

Compound	R.T.	Response	Conc Units
System Monitoring Compounds			
9) S ortho-Terphenyl (SURR)	11.256	3128642	28.983 ug/mlm
Spiked Amount	50.000	Recovery =	57.97%
12) S 1-chlorooctadecane (S...	12.699	2349071	29.756 ug/ml
Spiked Amount	50.000	Recovery =	59.51%

Target Compounds

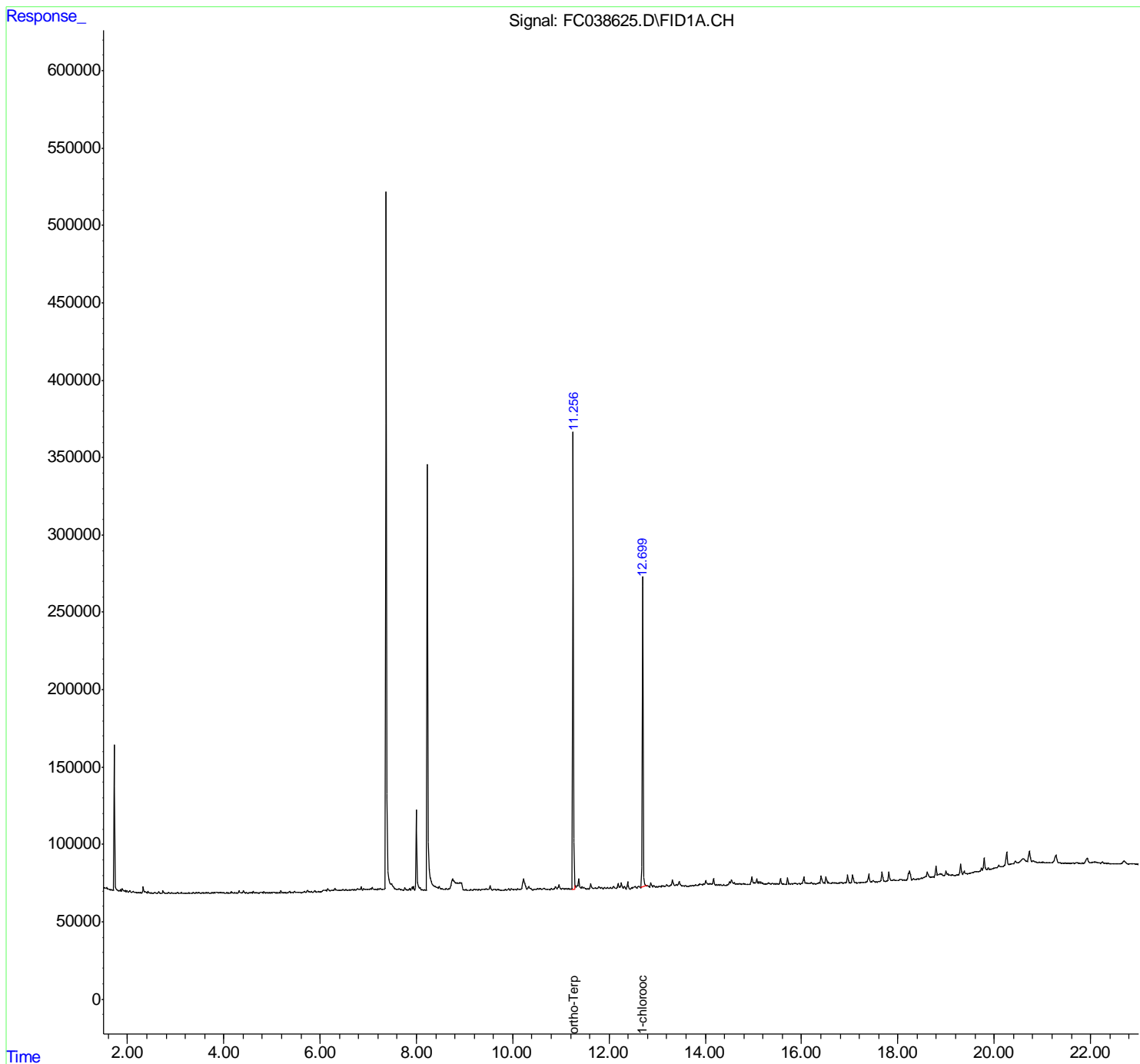
(f)=RT Delta > 1/2 Window

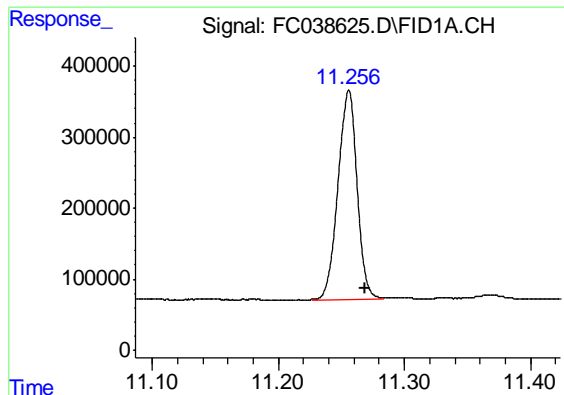
(m)=manual int.

Data Path : Z:\pestpcbsrv\HPCHEM1\FID_C\Data\FC011419AL\
Data File : FC038625.D
Signal(s) : FID1A.CH
Acq On : 14 Jan 2019 21:16
Operator : AJ\SJ
Sample : K1139-01
Misc :
ALS Vial : 6 Sample Multiplier: 1

Integration File: autoint1.e
Quant Time: Jan 14 23:38:59 2019
Quant Method : Z:\pestpcbsrv\HPCHEM1\FID_C\Method\Alaphatic EPH 010919.M
Quant Title : GC Extractables
QLast Update : Thu Jan 10 05:47:13 2019
Response via : Initial Calibration
Integrator: ChemStation 6890 Scale Mode: Large solvent peaks clipped

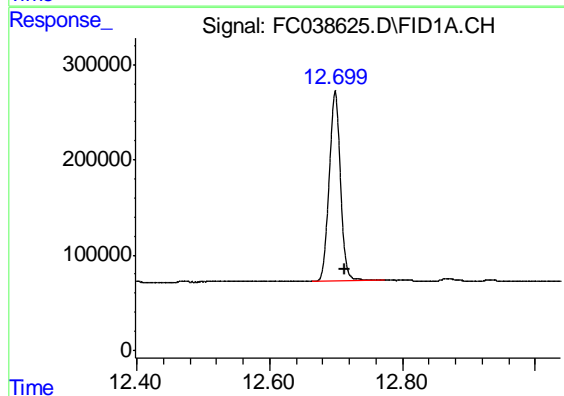
Volume Inj. : 1 ul
Signal Phase : Rxi-1ms
Signal Info : 20M x 0.18mm x 0.18um





#9 ortho-Terphenyl (SURR)

R.T.: 11.256 min
Delta R.T.: -0.013 min
Response: 3128642
Conc: 28.98 ug/ml m



#12 1-chlorooctadecane (SURR)

R.T.: 12.699 min
Delta R.T.: -0.014 min
Response: 2349071
Conc: 29.76 ug/ml