

Data Path : Z:\pestpcbsrv\HPCHEM1\FID_C\Data\FC011422AL\
 Data File : FC057935.D
 Signal(s) : FID1A.CH
 Acq On : 15 Jan 2022 00:16
 Operator : AJ\MA
 Sample : N1145-10
 Misc :
 ALS Vial : 18 Sample Multiplier: 1

Instrument :
 FID_C
 ClientSampleId :

Integration File: autoint1.e
 Quant Time: Jan 15 01:06:41 2022
 Quant Method : Z:\pestpcbsrv\HPCHEM1\FID_C\Method\Aliphatic EPH 010522.M
 Quant Title : GC Extractables
 QLast Update : Wed Jan 05 12:13:43 2022
 Response via : Initial Calibration
 Integrator: ChemStation 6890 Scale Mode: Large solvent peaks clipped

Volume Inj. : 1 ul
 Signal Phase : Rxi-1ms
 Signal Info : 20M x 0.18mm x 0.18um

Compound	R.T.	Response	Conc Units

System Monitoring Compounds			
9) S ortho-Terphenyl (SURR)	10.708	6201653	32.072 ug/ml
Spiked Amount	50.000	Recovery	= 64.14%
12) S 1-chlorooctadecane (S...	12.145	4637316	31.464 ug/ml
Spiked Amount	50.000	Recovery	= 62.93%
Target Compounds			
3) T A~Naphthalene (C11.7)	5.163	97499	0.537 ug/ml
6) T n-Tetradecane (C14)	7.346	60823	0.368 ug/ml

(f)=RT Delta > 1/2 Window

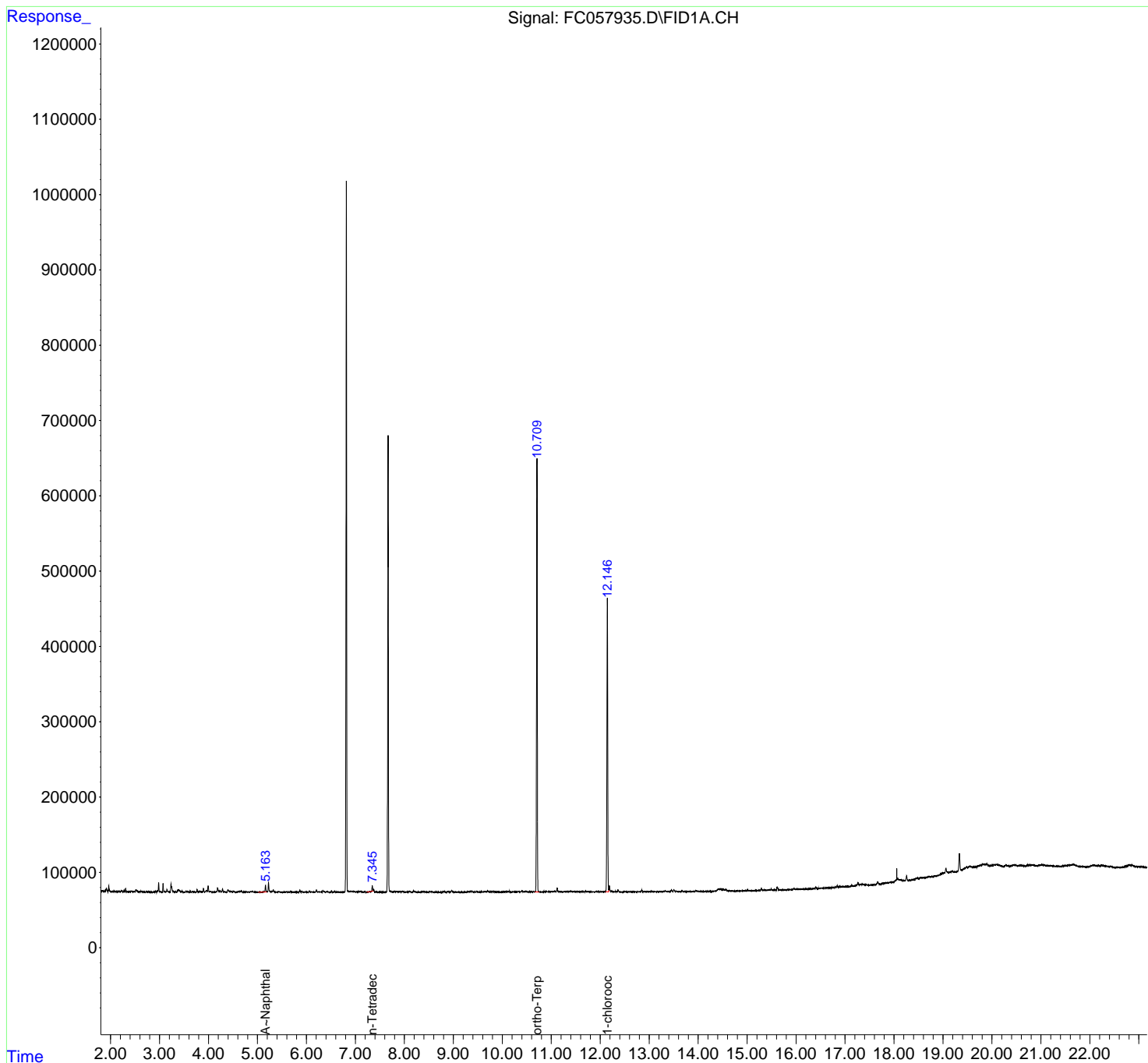
(m)=manual int.

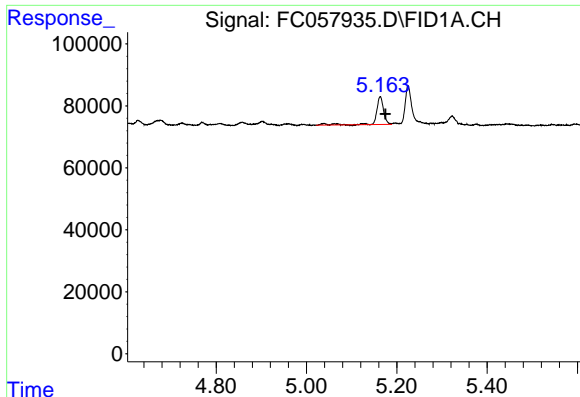
Data Path : Z:\pestpcbsrv\HPCHEM1\FID_C\Data\FC011422AL\
Data File : FC057935.D
Signal(s) : FID1A.CH
Acq On : 15 Jan 2022 00:16
Operator : AJ\MA
Sample : N1145-10
Misc :
ALS Vial : 18 Sample Multiplier: 1

Instrument :
FID_C
ClientSampleId :

Integration File: autoint1.e
Quant Time: Jan 15 01:06:41 2022
Quant Method : Z:\pestpcbsrv\HPCHEM1\FID_C\Method\Aliphatic EPH 010522.M
Quant Title : GC Extractables
QLast Update : Wed Jan 05 12:13:43 2022
Response via : Initial Calibration
Integrator: ChemStation 6890 Scale Mode: Large solvent peaks clipped

Volume Inj. : 1 ul
Signal Phase : Rxi-1ms
Signal Info : 20M x 0.18mm x 0.18um

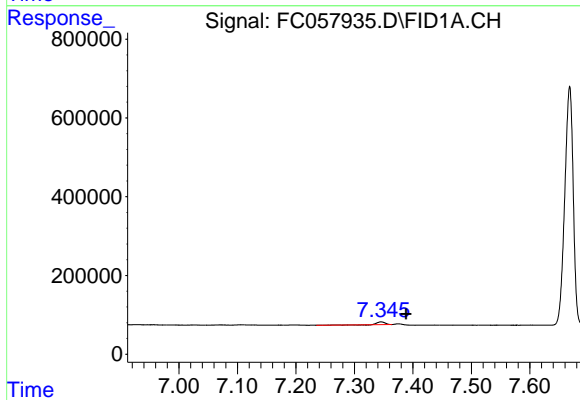




#3 A~Naphthalene (C11.7)

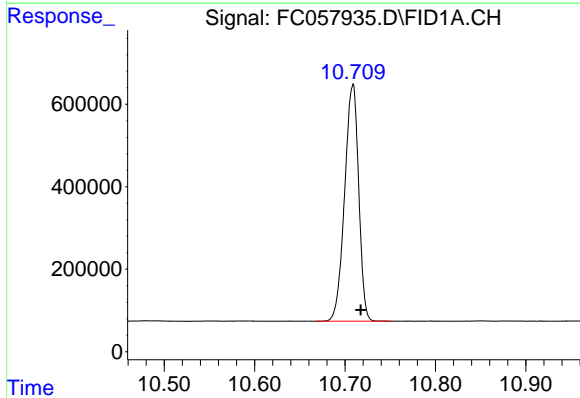
R.T.: 5.163 min
 Delta R.T.: -0.011 min
 Response: 97499
 Conc: 0.54 ug/ml

Instrument :
 FID_C
 ClientSampleId :



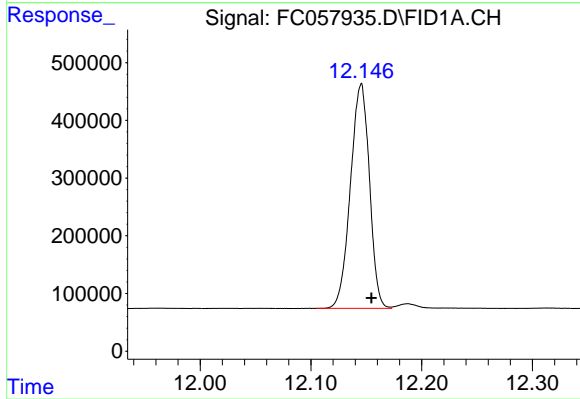
#6 n-Tetradecane (C14)

R.T.: 7.346 min
 Delta R.T.: -0.043 min
 Response: 60823
 Conc: 0.37 ug/ml



#9 ortho-Terphenyl (SURR)

R.T.: 10.708 min
 Delta R.T.: -0.009 min
 Response: 6201653
 Conc: 32.07 ug/ml



#12 1-chlorooctadecane (SURR)

R.T.: 12.145 min
 Delta R.T.: -0.010 min
 Response: 4637316
 Conc: 31.46 ug/ml