

Data Path : Z:\pestpcbsrv\HPCHEM1\FID_C\Data\FC011619AL\
 Data File : FC038672.D
 Signal(s) : FID1A.CH
 Acq On : 16 Jan 2019 19:38
 Operator : AJ\SJ
 Sample : K1147-16
 Misc :
 ALS Vial : 13 Sample Multiplier: 1

Integration File: autoint1.e
 Quant Time: Jan 17 00:22:00 2019
 Quant Method : Z:\pestpcbsrv\HPCHEM1\FID_C\Method\Alaphatic EPH 010919.M
 Quant Title : GC Extractables
 QLast Update : Thu Jan 10 05:47:13 2019
 Response via : Initial Calibration
 Integrator: ChemStation 6890 Scale Mode: Large solvent peaks clipped

Volume Inj. : 1 ul
 Signal Phase : Rxi-1ms
 Signal Info : 20M x 0.18mm x 0.18um

Compound	R.T.	Response	Conc Units
System Monitoring Compounds			
9) S ortho-Terphenyl (SURR)	11.250	3728381	34.539 ug/mlm
Spiked Amount	50.000	Recovery =	69.08%
12) S 1-chlorooctadecane (S...	12.692	2895915	36.683 ug/mlm
Spiked Amount	50.000	Recovery =	73.37%

Target Compounds

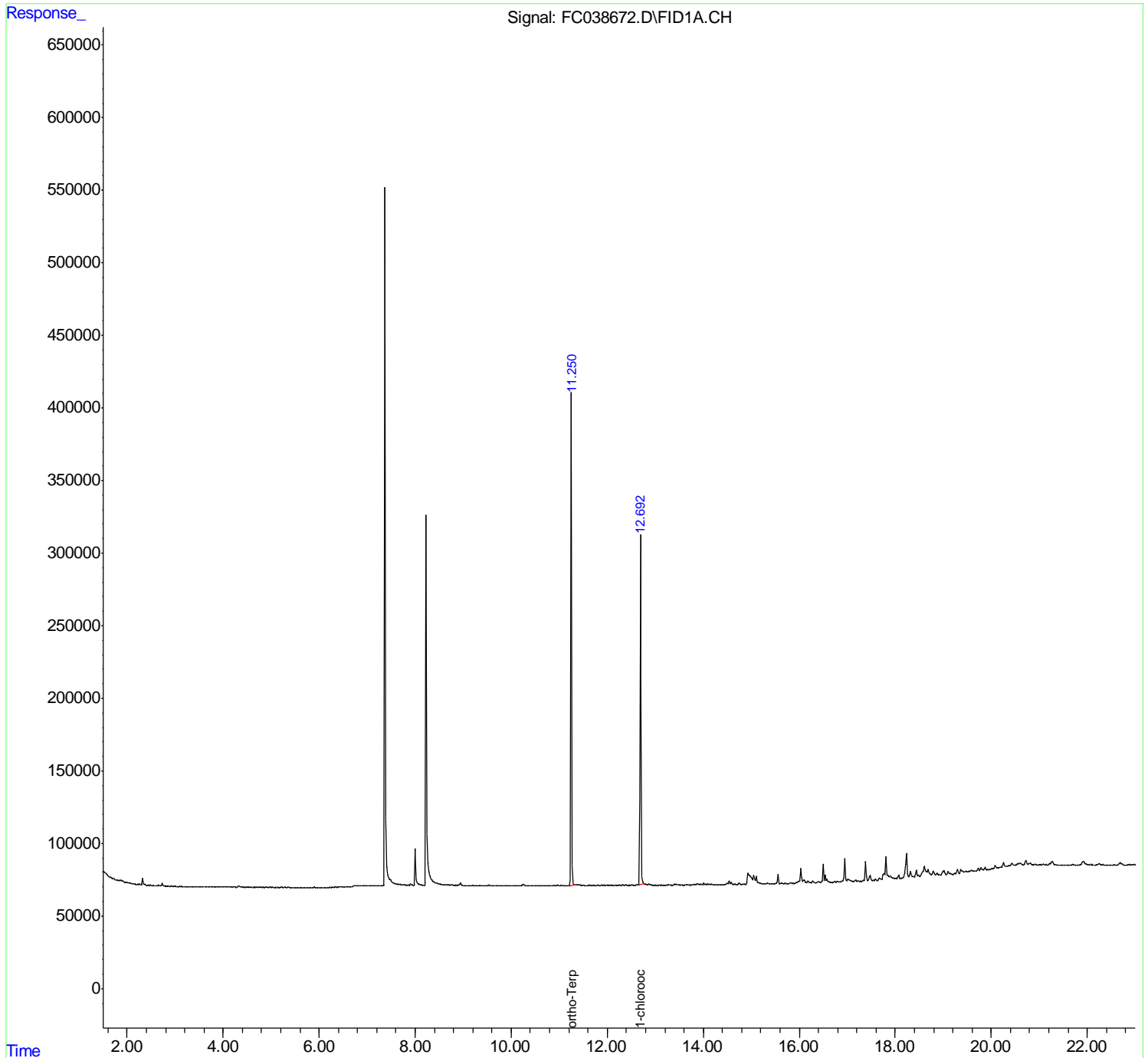
(f)=RT Delta > 1/2 Window

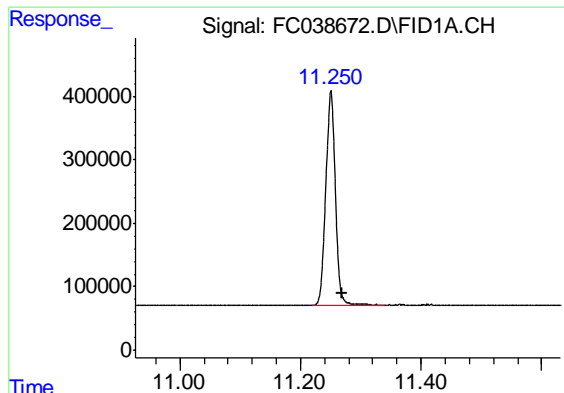
(m)=manual int.

Data Path : Z:\pestpcbsrv\HPCHEM1\FID_C\Data\FC011619AL\
 Data File : FC038672.D
 Signal(s) : FID1A.CH
 Acq On : 16 Jan 2019 19:38
 Operator : AJ\SJ
 Sample : K1147-16
 Misc :
 ALS Vial : 13 Sample Multiplier: 1

Integration File: autoint1.e
 Quant Time: Jan 17 00:22:00 2019
 Quant Method : Z:\pestpcbsrv\HPCHEM1\FID_C\Method\Alaphatic EPH 010919.M
 Quant Title : GC Extractables
 QLast Update : Thu Jan 10 05:47:13 2019
 Response via : Initial Calibration
 Integrator: ChemStation 6890 Scale Mode: Large solvent peaks clipped

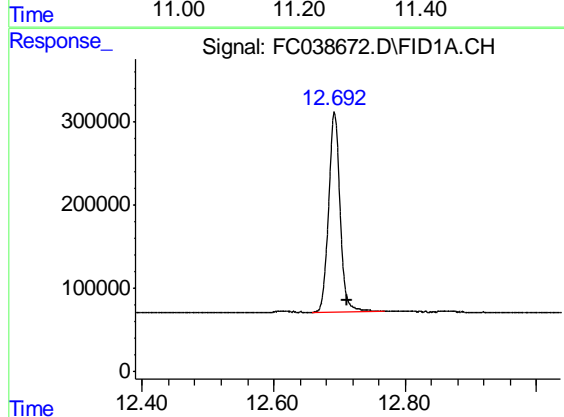
Volume Inj. : 1 ul
 Signal Phase : Rxi-1ms
 Signal Info : 20M x 0.18mm x 0.18um





#9 ortho-Terphenyl (SURR)

R.T.: 11.250 min
Delta R.T.: -0.018 min
Response: 3728381
Conc: 34.54 ug/ml m



#12 1-chlorooctadecane (SURR)

R.T.: 12.692 min
Delta R.T.: -0.020 min
Response: 2895915
Conc: 36.68 ug/ml m