

Data Path : Z:\pestpcbsrv\HPCHEM1\FID_C\Data\FC011722AL\
 Data File : FC057945.D
 Signal(s) : FID1A.CH
 Acq On : 17 Jan 2022 13:19
 Operator : AJ\MA
 Sample : N1145-08DL 5X
 Misc :
 ALS Vial : 6 Sample Multiplier: 1

Instrument :
 FID_C
ClientSampleId :
 A3-8-5.5DL

Manual Integrations
APPROVED

Reviewed By :Yogesh Patel 01/18/2022
 Supervised By :Ankita Jodhani 01/18/2022

Integration File: autoint1.e
 Quant Time: Jan 18 00:50:55 2022
 Quant Method : Z:\pestpcbsrv\HPCHEM1\FID_C\Method\Aliphatic EPH 010522.M
 Quant Title : GC Extractables
 QLast Update : Wed Jan 05 12:13:43 2022
 Response via : Initial Calibration
 Integrator: ChemStation 6890 Scale Mode: Large solvent peaks clipped

Volume Inj. : 1 ul
 Signal Phase : Rxi-1ms
 Signal Info : 20M x 0.18mm x 0.18um

Compound	R.T.	Response	Conc Units

System Monitoring Compounds			
9) S ortho-Terphenyl (SURR)	10.709	1351141	6.988 ug/ml
Spiked Amount	50.000	Recovery =	13.98%
12) S 1-chlorooctadecane (S...	12.147	1046757	7.102 ug/mlm
Spiked Amount	50.000	Recovery =	14.20%

Target Compounds

(f)=RT Delta > 1/2 Window

(m)=manual int.

Data Path : Z:\pestpcbsrv\HPCHEM1\FID_C\Data\FC011722AL\
 Data File : FC057945.D
 Signal(s) : FID1A.CH
 Acq On : 17 Jan 2022 13:19
 Operator : AJ\MA
 Sample : N1145-08DL 5X
 Misc :
 ALS Vial : 6 Sample Multiplier: 1

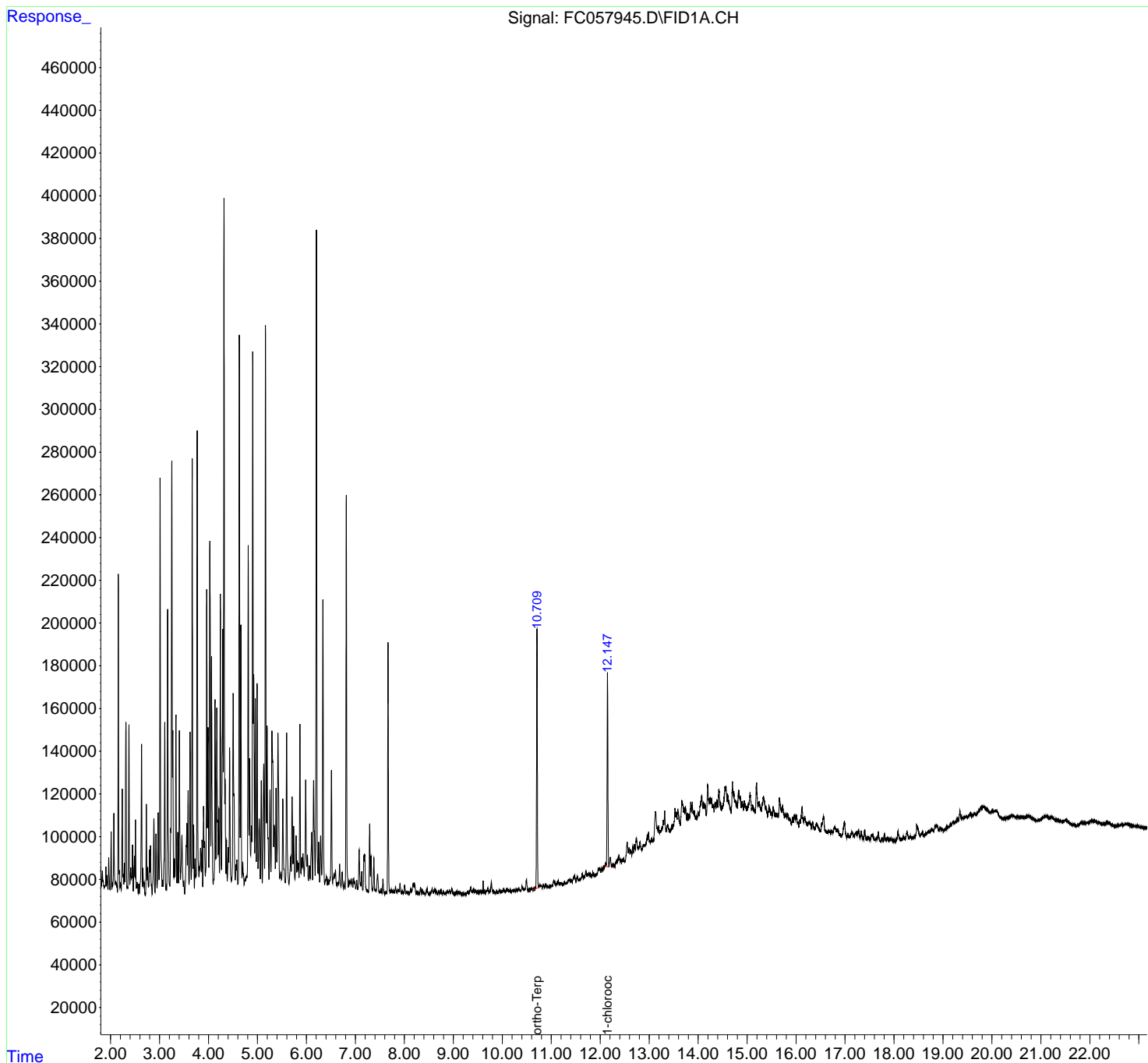
Instrument :
 FID_C
ClientSampleId :
 A3-8-5.5DL

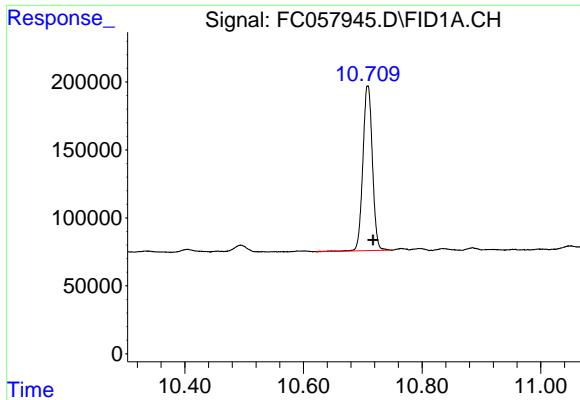
Manual Integrations
APPROVED

Reviewed By :Yogesh Patel 01/18/2022
 Supervised By :Ankita Jodhani 01/18/2022

Integration File: autoint1.e
 Quant Time: Jan 18 00:50:55 2022
 Quant Method : Z:\pestpcbsrv\HPCHEM1\FID_C\Method\Aliphatic EPH 010522.M
 Quant Title : GC Extractables
 QLast Update : Wed Jan 05 12:13:43 2022
 Response via : Initial Calibration
 Integrator: ChemStation 6890 Scale Mode: Large solvent peaks clipped

Volume Inj. : 1 ul
 Signal Phase : Rxi-1ms
 Signal Info : 20M x 0.18mm x 0.18um





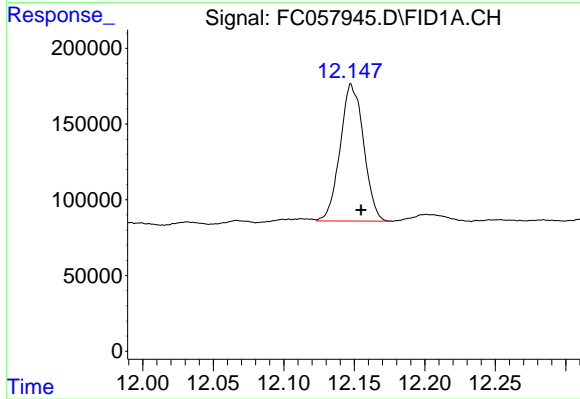
#9 ortho-Terphenyl (SURR)

R.T.: 10.709 min
 Delta R.T.: -0.009 min
 Response: 1351141
 Conc: 6.99 ug/ml

Instrument :
 FID_C
 ClientSampleId :
 A3-8-5.5DL

Manual Integrations
 APPROVED

Reviewed By :Yogesh Patel 01/18/2022
 Supervised By :Ankita Jodhani 01/18/2022



#12 1-chlorooctadecane (SURR)

R.T.: 12.147 min
 Delta R.T.: -0.008 min
 Response: 1046757
 Conc: 7.10 ug/ml m