

Data Path : Z:\pestpcbsrv\HPCHEM1\FID_C\Data\FC012419AL\
 Data File : FC038769.D
 Signal(s) : FID1A.CH
 Acq On : 24 Jan 2019 20:27
 Operator : AJ\SJ
 Sample : 20 PPM ALIPHATIC HC STD
 Misc :
 ALS Vial : 2 Sample Multiplier: 1

Instrument :
 FID_C
 ClientSampleId :
 20 PPM ALIPHATIC HC STD

Integration File: autoint1.e
 Quant Time: Jan 25 02:13:47 2019
 Quant Method : Z:\pestpcbsrv\HPCHEM1\FID_C\Method\Aliphatic EPH 010919.M
 Quant Title : GC Extractables
 QLast Update : Thu Jan 10 05:47:13 2019
 Response via : Initial Calibration
 Integrator: ChemStation 6890 Scale Mode: Large solvent peaks clipped

Volume Inj. : 1 ul
 Signal Phase : Rxi-1ms
 Signal Info : 20M x 0.18mm x 0.18um

| Compound | R.T. | Response | Conc Units |
|--------------------------------|--------|------------|--------------|
| System Monitoring Compounds | | | |
| 9) S ortho-Terphenyl (SURR) | 11.250 | 2235171 | 20.706 ug/ml |
| Spiked Amount | 50.000 | Recovery = | 41.41% |
| 12) S 1-chlorooctadecane (S... | 12.694 | 1682044 | 21.307 ug/ml |
| Spiked Amount | 50.000 | Recovery = | 42.61% |
| Target Compounds | | | |
| 1) T n-Nonane (C9) | 3.093 | 1711977 | 19.159 ug/ml |
| 2) T n-Decane (C10) | 4.148 | 1770515 | 19.904 ug/ml |
| 3) T A~Naphthalene (C11.7) | 5.708 | 2015474 | 20.641 ug/ml |
| 4) T n-Dodecane (C12) | 6.151 | 1848780 | 20.632 ug/ml |
| 5) T A~2-methylnaphthalene... | 6.755 | 1957754 | 20.408 ug/ml |
| 6) T n-Tetradecane (C14) | 7.932 | 1910377 | 21.229 ug/ml |
| 7) T n-Hexadecane (C16) | 9.521 | 1965464 | 21.691 ug/ml |
| 8) T n-Octadecane (C18) | 10.954 | 1965802 | 21.545 ug/ml |
| 10) T n-Eicosane (C20) | 12.256 | 1974908 | 21.602 ug/ml |
| 11) T n-Heneicosane (C21) | 12.864 | 1964130 | 21.955 ug/ml |
| 13) T n-Docosane (C22) | 13.447 | 1961389 | 21.977 ug/ml |
| 14) T n-Tetracosane (C24) | 14.545 | 1957538 | 22.170 ug/ml |
| 15) T n-Hexacosane (C26) | 15.561 | 1953177 | 22.450 ug/ml |
| 16) T n-Octacosane (C28) | 16.505 | 1995844 | 22.978 ug/ml |
| 17) T n-Tricontane (C30) | 17.389 | 2000931 | 23.163 ug/ml |
| 18) T n-Dotriacontane (C32) | 18.217 | 1982599 | 24.365 ug/ml |
| 19) T n-Tetratriacontane (C34) | 18.996 | 1638270 | 24.178 ug/ml |
| 20) T n-Hexatriacontane (C36) | 19.733 | 1465205 | 24.512 ug/ml |
| 21) T n-Octatriacontane (C38) | 20.434 | 1424670 | 22.379 ug/ml |
| 22) T n-Tetracontane (C40) | 21.270 | 1062973 | 18.276 ug/ml |

(f)=RT Delta > 1/2 Window

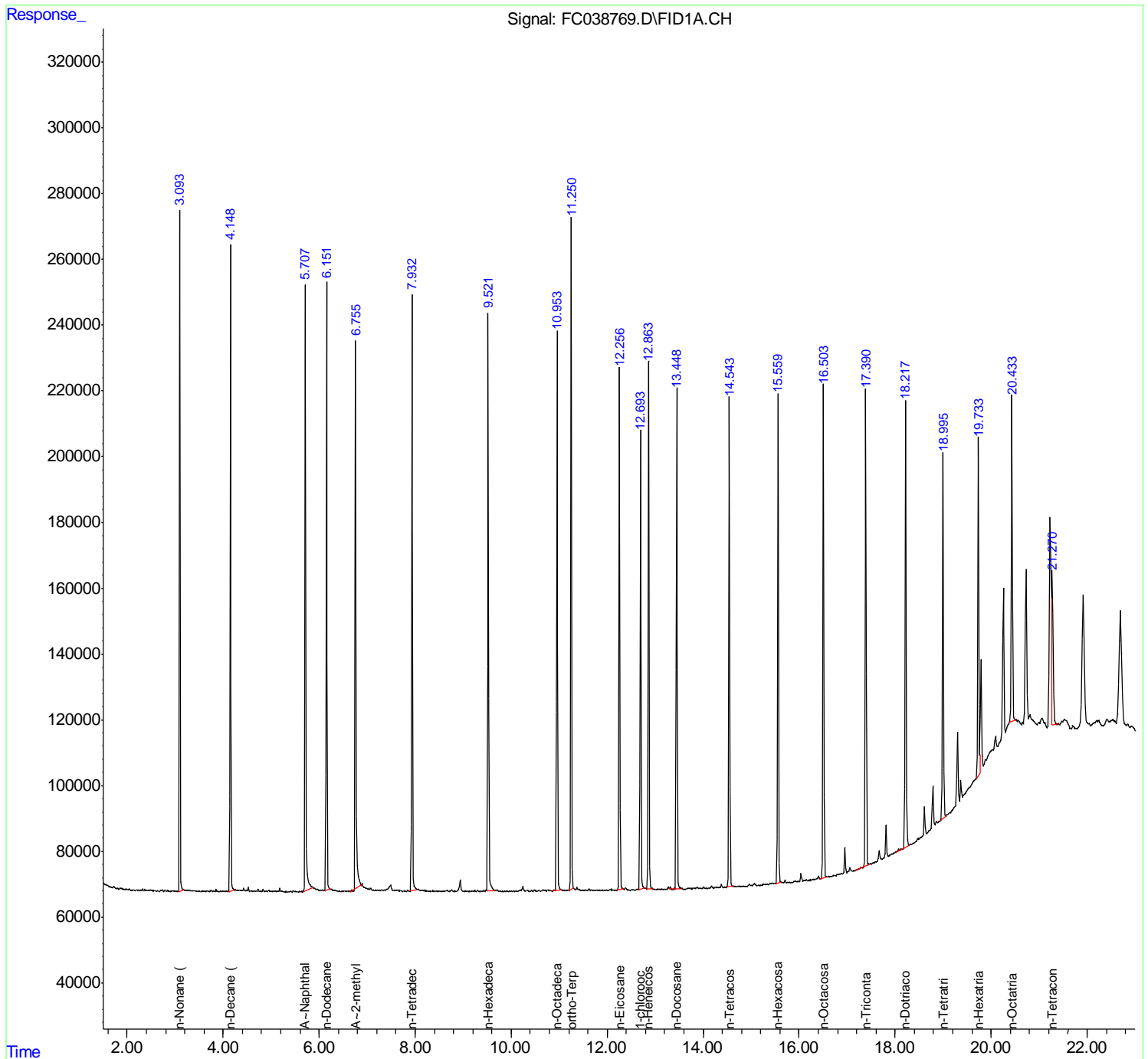
(m)=manual int.

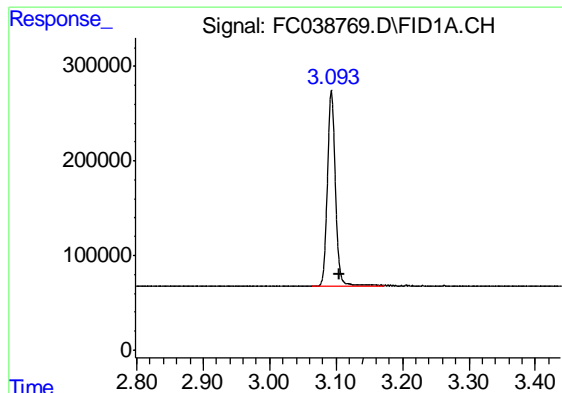
Data Path : Z:\pestpcbsrv\HPCHEM1\FID_C\Data\FC012419AL\
 Data File : FC038769.D
 Signal(s) : FID1A.CH
 Acq On : 24 Jan 2019 20:27
 Operator : AJ\SJ
 Sample : 20 PPM ALIPHATIC HC STD
 Misc :
 ALS Vial : 2 Sample Multiplier: 1

Instrument :
 FID_C
 ClientSampled :
 20 PPM ALIPHATIC HC STD

Integration File: autoint1.e
 Quant Time: Jan 25 02:13:47 2019
 Quant Method : Z:\pestpcbsrv\HPCHEM1\FID_C\Method\Aliphatic EPH 010919.M
 Quant Title : GC Extractables
 QLast Update : Thu Jan 10 05:47:13 2019
 Response via : Initial Calibration
 Integrator: ChemStation 6890 Scale Mode: Large solvent peaks clipped

Volume Inj. : 1 ul
 Signal Phase : Rxi-1ms
 Signal Info : 20M x 0.18mm x 0.18um

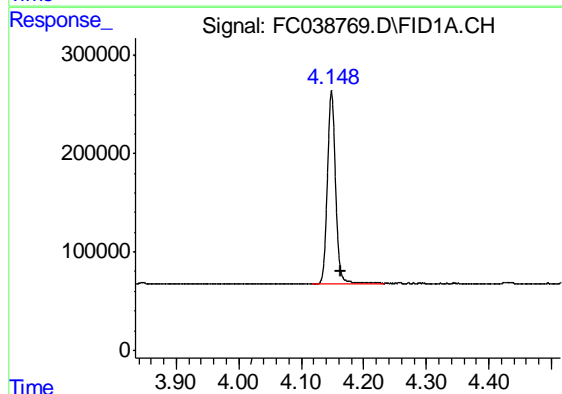




#1 n-Nonane (C9)

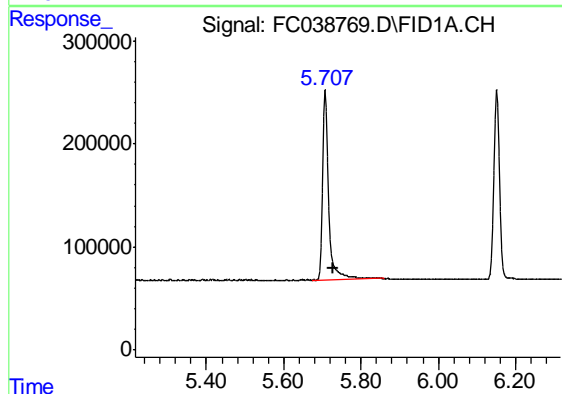
R.T.: 3.093 min
Delta R.T.: -0.013 min
Response: 1711977
Conc: 19.16 ug/ml

Instrument :
FID_C
ClientSampleId :
20 PPM ALIPHATIC HC STD



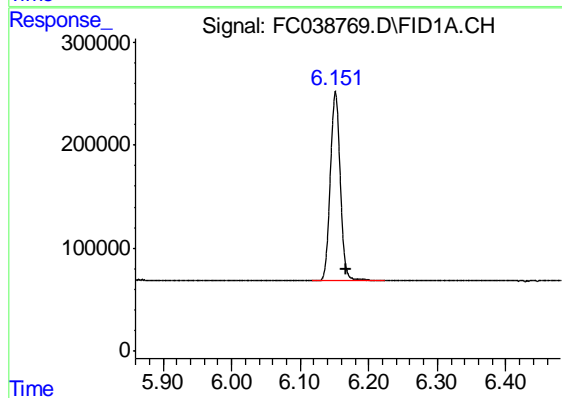
#2 n-Decane (C10)

R.T.: 4.148 min
Delta R.T.: -0.014 min
Response: 1770515
Conc: 19.90 ug/ml



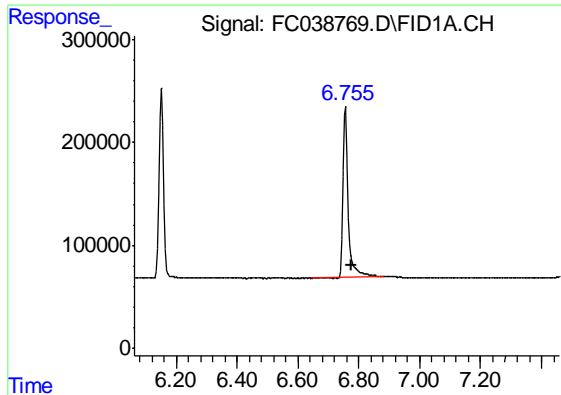
#3 A-Naphthalene (C11.7)

R.T.: 5.708 min
Delta R.T.: -0.020 min
Response: 2015474
Conc: 20.64 ug/ml



#4 n-Dodecane (C12)

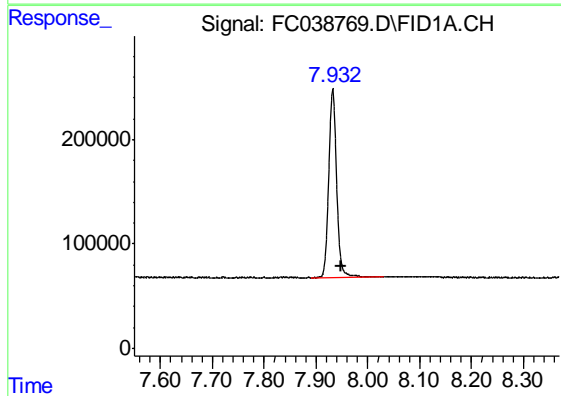
R.T.: 6.151 min
Delta R.T.: -0.016 min
Response: 1848780
Conc: 20.63 ug/ml



#5 A~2-methylnaphthalene (C12.89)

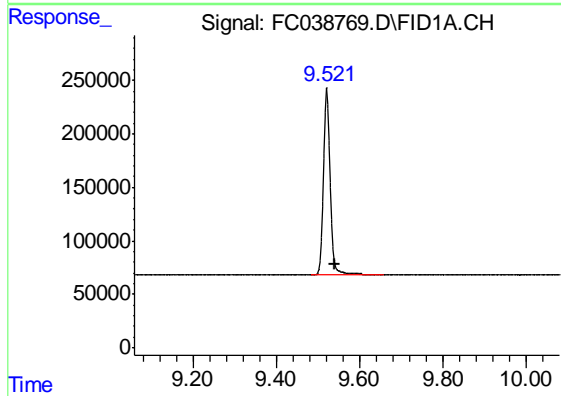
R.T.: 6.755 min
Delta R.T.: -0.022 min
Response: 1957754
Conc: 20.41 ug/ml

Instrument :
FID_C
ClientSampleId :
20 PPM ALIPHATIC HC STD



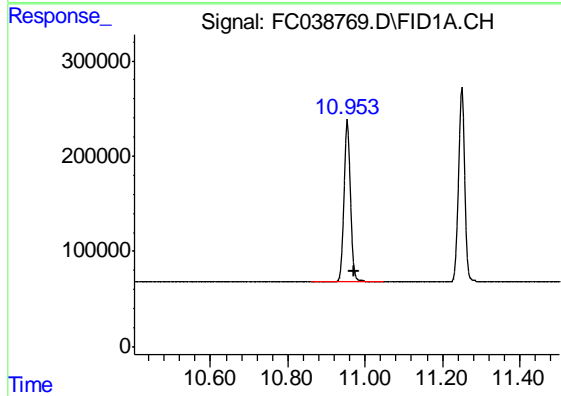
#6 n-Tetradecane (C14)

R.T.: 7.932 min
Delta R.T.: -0.017 min
Response: 1910377
Conc: 21.23 ug/ml



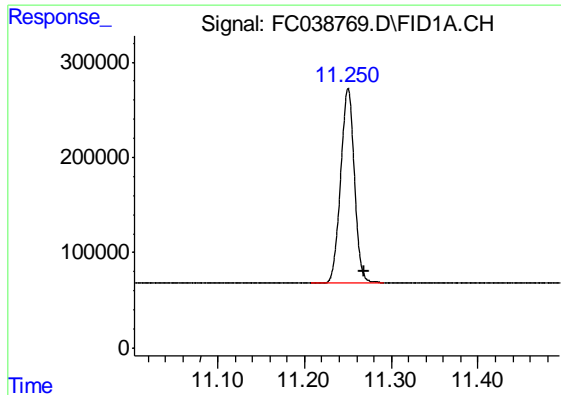
#7 n-Hexadecane (C16)

R.T.: 9.521 min
Delta R.T.: -0.018 min
Response: 1965464
Conc: 21.69 ug/ml



#8 n-Octadecane (C18)

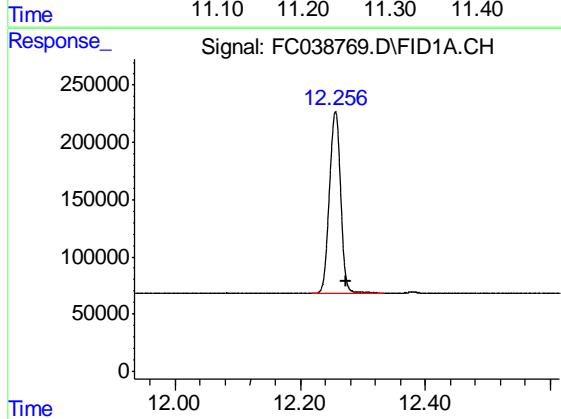
R.T.: 10.954 min
Delta R.T.: -0.018 min
Response: 1965802
Conc: 21.55 ug/ml



#9 ortho-Terphenyl (SURR)

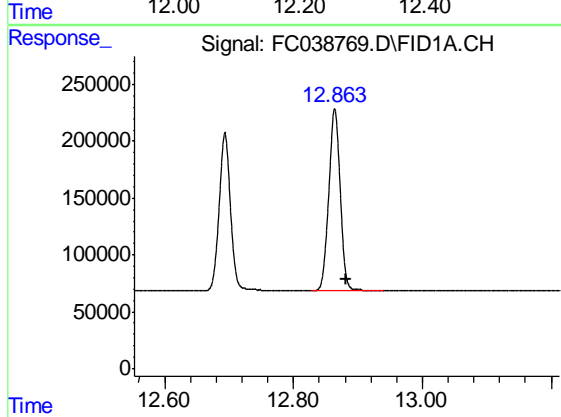
R.T.: 11.250 min
 Delta R.T.: -0.018 min
 Response: 2235171
 Conc: 20.71 ug/ml

Instrument :
 FID_C
 ClientSampleId :
 20 PPM ALIPHATIC HC STD



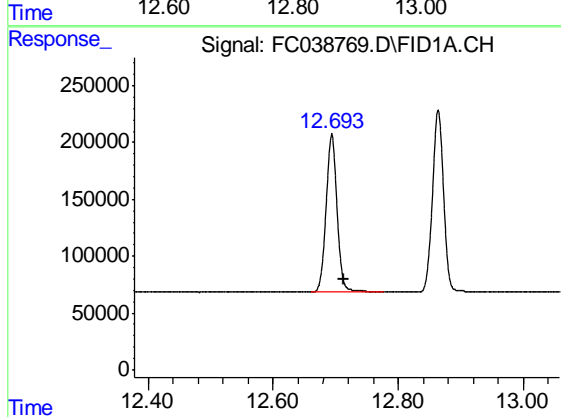
#10 n-Eicosane (C20)

R.T.: 12.256 min
 Delta R.T.: -0.018 min
 Response: 1974908
 Conc: 21.60 ug/ml



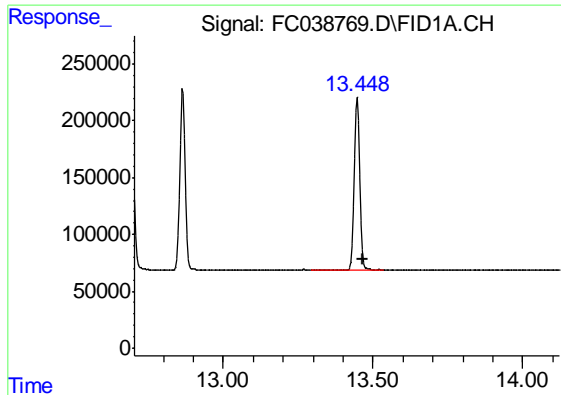
#11 n-Heneicosane (C21)

R.T.: 12.864 min
 Delta R.T.: -0.018 min
 Response: 1964130
 Conc: 21.96 ug/ml



#12 1-chlorooctadecane (SURR)

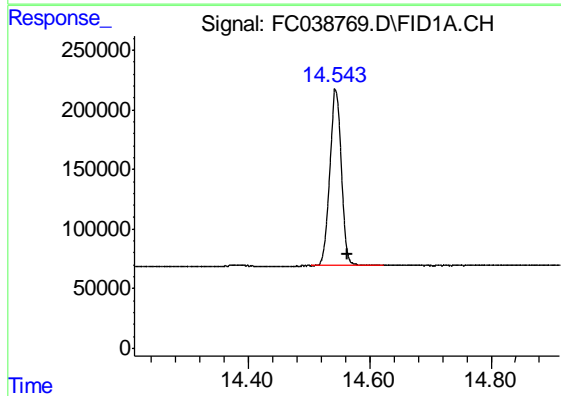
R.T.: 12.694 min
 Delta R.T.: -0.019 min
 Response: 1682044
 Conc: 21.31 ug/ml



#13 n-Docosane (C22)

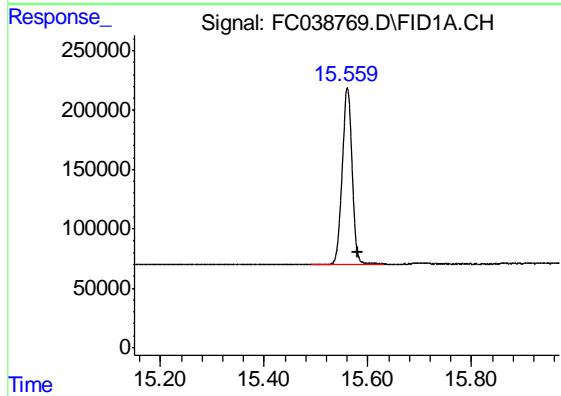
R.T.: 13.447 min
Delta R.T.: -0.019 min
Response: 1961389
Conc: 21.98 ug/ml

Instrument :
FID_C
ClientSampleId :
20 PPM ALIPHATIC HC STD



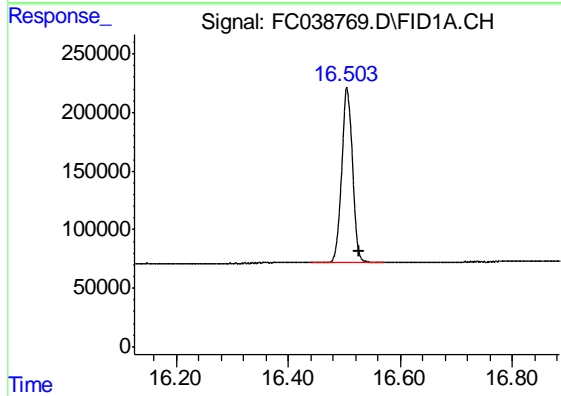
#14 n-Tetracosane (C24)

R.T.: 14.545 min
Delta R.T.: -0.019 min
Response: 1957538
Conc: 22.17 ug/ml



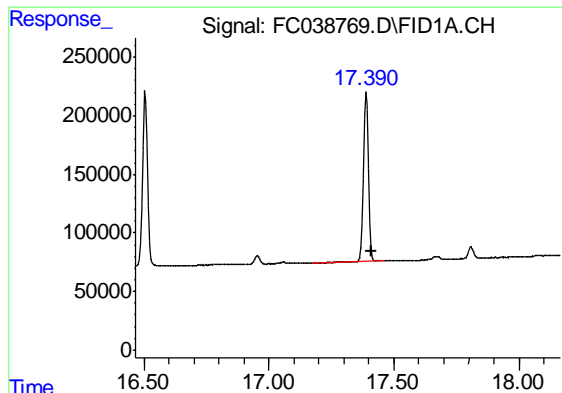
#15 n-Hexacosane (C26)

R.T.: 15.561 min
Delta R.T.: -0.020 min
Response: 1953177
Conc: 22.45 ug/ml



#16 n-Octacosane (C28)

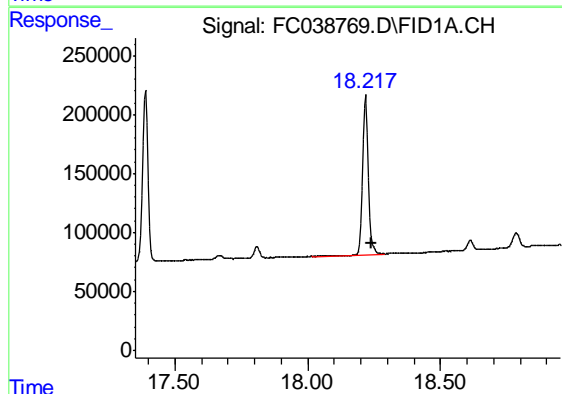
R.T.: 16.505 min
Delta R.T.: -0.020 min
Response: 1995844
Conc: 22.98 ug/ml



#17 n-Tricontane (C30)

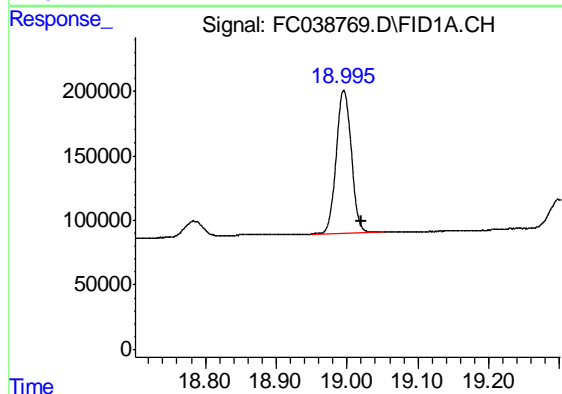
R.T.: 17.389 min
Delta R.T.: -0.022 min
Response: 2000931
Conc: 23.16 ug/ml

Instrument :
FID_C
ClientSampleId :
20 PPM ALIPHATIC HC STD



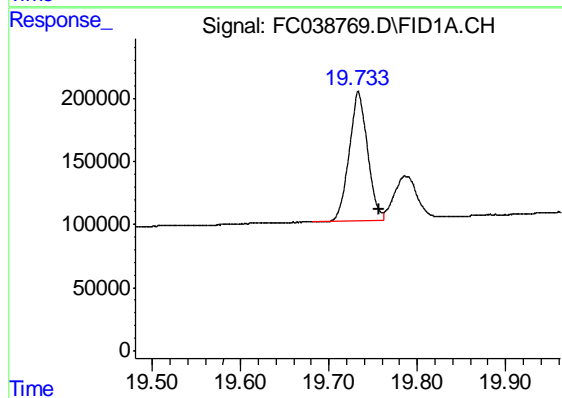
#18 n-Dotriacontane (C32)

R.T.: 18.217 min
Delta R.T.: -0.022 min
Response: 1982599
Conc: 24.37 ug/ml



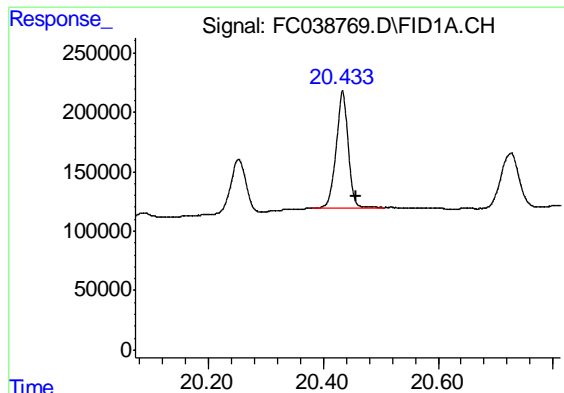
#19 n-Tetratriacontane (C34)

R.T.: 18.996 min
Delta R.T.: -0.025 min
Response: 1638270
Conc: 24.18 ug/ml



#20 n-Hexatriacontane (C36)

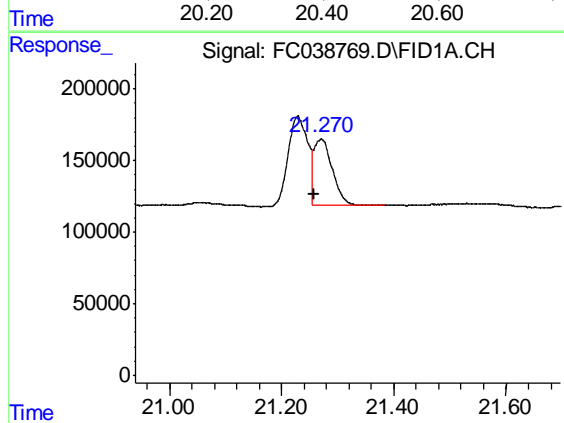
R.T.: 19.733 min
Delta R.T.: -0.023 min
Response: 1465205
Conc: 24.51 ug/ml



#21 n-Octatriacontane (C38)

R.T.: 20.434 min
Delta R.T.: -0.024 min
Response: 1424670
Conc: 22.38 ug/ml

Instrument :
FID_C
ClientSampleId :
20 PPM ALIPHATIC HC STD



#22 n-Tetracontane (C40)

R.T.: 21.270 min
Delta R.T.: 0.012 min
Response: 1062973
Conc: 18.28 ug/ml