

Data Path : Z:\pestpcbsrv\HPCHEM1\FID_D\Data\FD012422AL\
 Data File : FD040761.D
 Signal(s) : FID2B.CH
 Acq On : 25 Jan 2022 2:23
 Operator : AJ\MA
 Sample : N1243-04
 Misc :
 ALS Vial : 70 Sample Multiplier: 1

Integration File: autoint1.e
 Quant Time: Jan 25 04:22:25 2022
 Quant Method : Z:\pestpcbsrv\HPCHEM1\FID_D\methods\Aliphatic EPH 010422.M
 Quant Title : GC Extractables
 QLast Update : Wed Jan 05 07:08:39 2022
 Response via : Initial Calibration
 Integrator: ChemStation 6890 Scale Mode: Large solvent peaks clipped

Volume Inj. : 1 ul
 Signal Phase : Rxi-1ms
 Signal Info : 20M x 0.18mm x 0.18um

Compound	R.T.	Response	Conc Units

System Monitoring Compounds			
9) S ortho-Terphenyl (SURR)	10.615	3677951	23.854 ug/ml
Spiked Amount	50.000	Recovery	= 47.71%
12) S 1-chlorooctadecane (S...	12.054	2721648	23.122 ug/ml
Spiked Amount	50.000	Recovery	= 46.24%
Target Compounds			
5) T A~2-methylnaphthalene...	6.067f	53516	0.379 ug/ml
16) T n-Octacosane (C28)	15.906	70372	0.519 ug/ml
17) T n-Tricontane (C30)	16.745	61131	0.469 ug/ml
18) T n-Dotriacontane (C32)	17.608	147667	1.235 ug/ml
19) T n-Tetratriacontane (C34)	18.380	31676	0.301 ug/ml

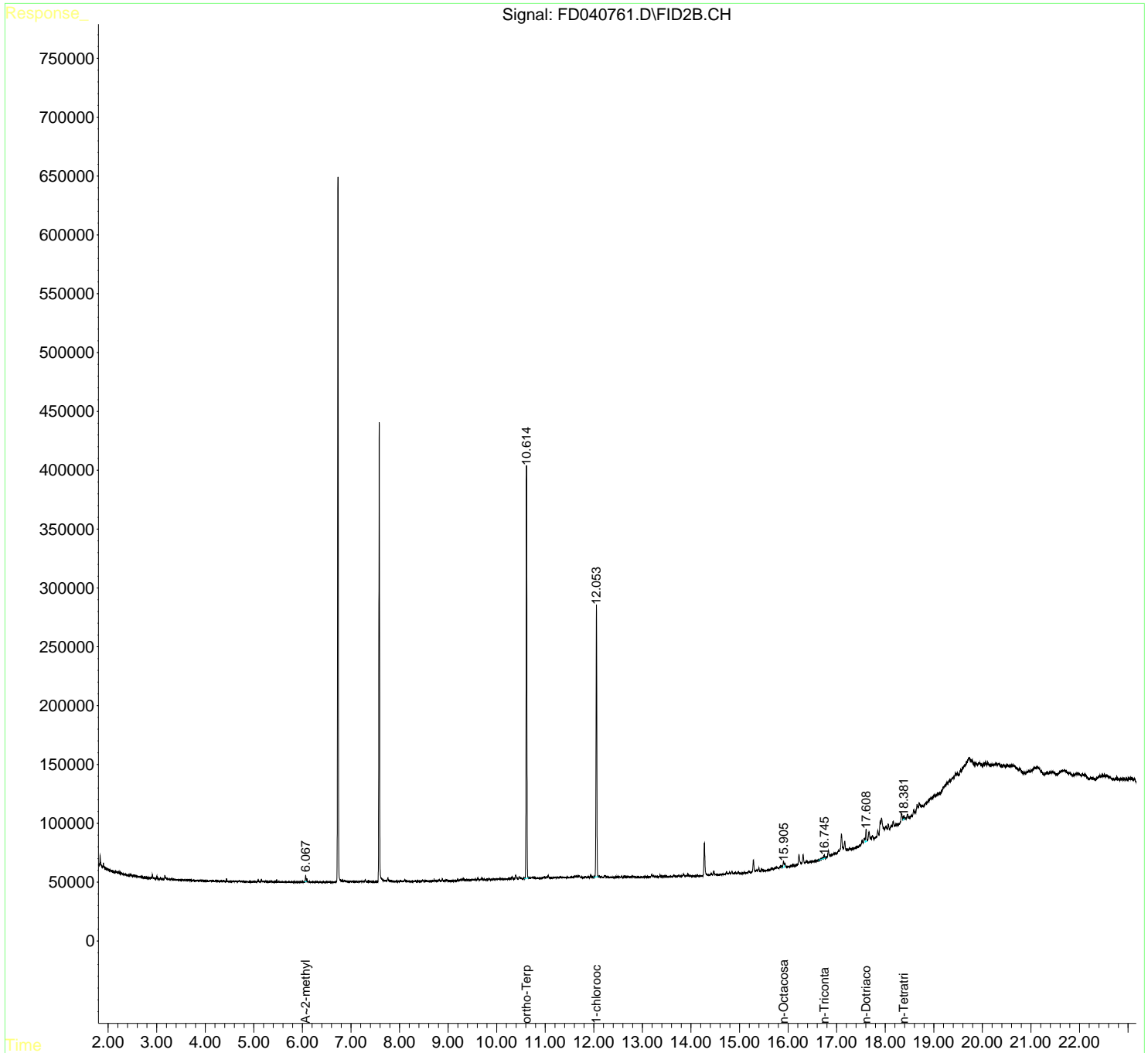
(f)=RT Delta > 1/2 Window

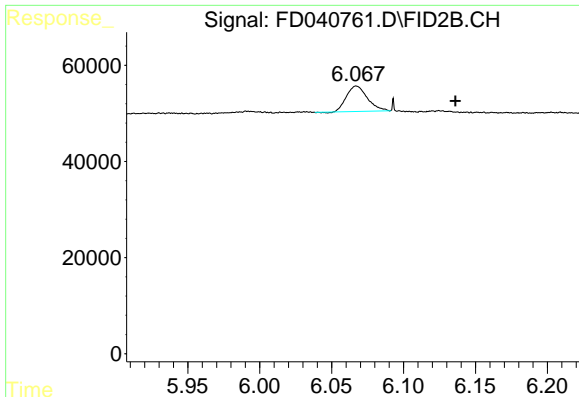
(m)=manual int.

Data Path : Z:\pestpcbsrv\HPCHEM1\FID_D\Data\FD012422AL\
Data File : FD040761.D
Signal(s) : FID2B.CH
Acq On : 25 Jan 2022 2:23
Operator : AJ\MA
Sample : N1243-04
Misc :
ALS Vial : 70 Sample Multiplier: 1

Integration File: autoint1.e
Quant Time: Jan 25 04:22:25 2022
Quant Method : Z:\pestpcbsrv\HPCHEM1\FID_D\methods\Aliphatic EPH 010422.M
Quant Title : GC Extractables
QLast Update : Wed Jan 05 07:08:39 2022
Response via : Initial Calibration
Integrator: ChemStation 6890 Scale Mode: Large solvent peaks clipped

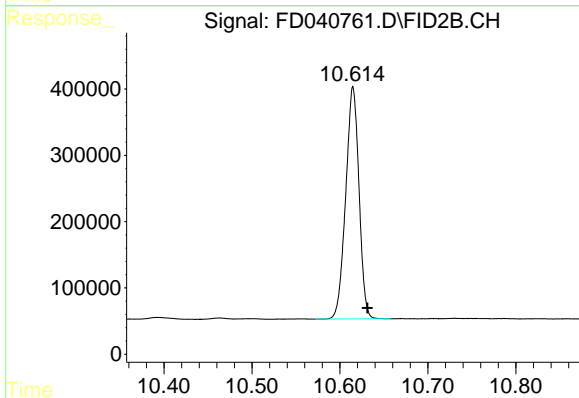
Volume Inj. : 1 ul
Signal Phase : Rxi-1ms
Signal Info : 20M x 0.18mm x 0.18um





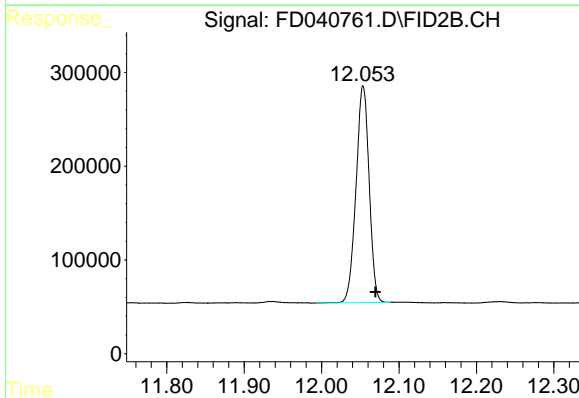
#5 A~2-methylnaphthalene (C12.89)

R.T.: 6.067 min
 Delta R.T.: -0.069 min
 Response: 53516
 Conc: 0.38 ug/ml



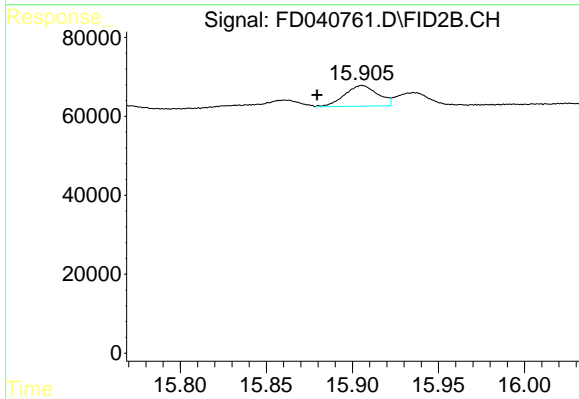
#9 ortho-Terphenyl (SURR)

R.T.: 10.615 min
 Delta R.T.: -0.016 min
 Response: 3677951
 Conc: 23.85 ug/ml



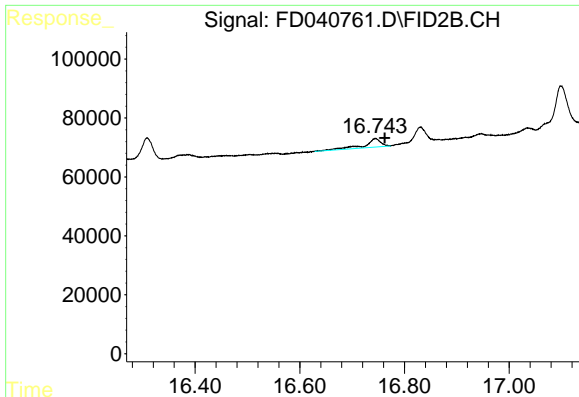
#12 1-chlorooctadecane (SURR)

R.T.: 12.054 min
 Delta R.T.: -0.016 min
 Response: 2721648
 Conc: 23.12 ug/ml



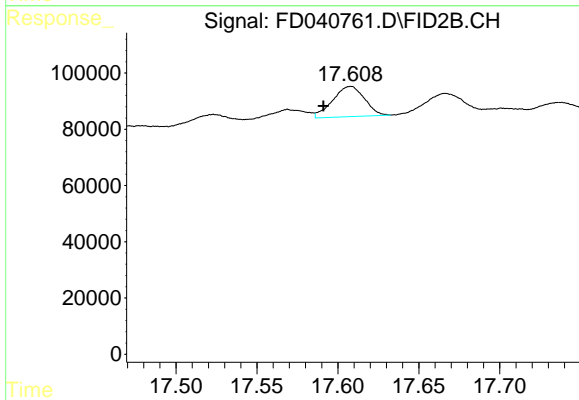
#16 n-Octacosane (C28)

R.T.: 15.906 min
 Delta R.T.: 0.026 min
 Response: 70372
 Conc: 0.52 ug/ml



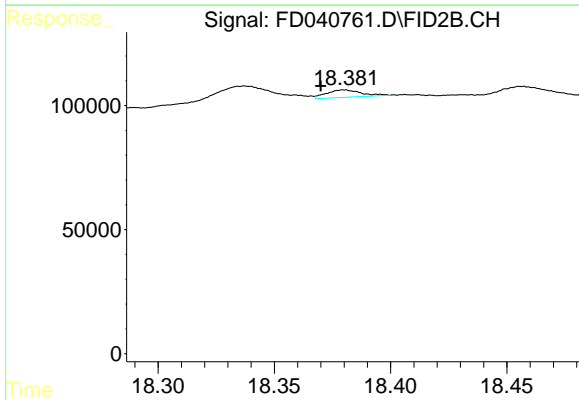
#17 n-Tricontane (C30)

R.T.: 16.745 min
Delta R.T.: -0.018 min
Response: 61131
Conc: 0.47 ug/ml



#18 n-Dotriacontane (C32)

R.T.: 17.608 min
Delta R.T.: 0.017 min
Response: 147667
Conc: 1.24 ug/ml



#19 n-Tetratriacontane (C34)

R.T.: 18.380 min
Delta R.T.: 0.010 min
Response: 31676
Conc: 0.30 ug/ml