

Data Path : Z:\pestpcbsrv\HPCHEM1\FID_C\Data\FC012423AL\
 Data File : FC062761.D
 Signal(s) : FID1A.ch
 Acq On : 24 Jan 2023 23:59
 Operator : YP/AJ
 Sample : 01251-03
 Misc :
 ALS Vial : 16 Sample Multiplier: 1

Integration File: autoint1.e
 Quant Time: Jan 25 02:04:13 2023
 Quant Method : Z:\pestpcbsrv\HPCHEM1\FID_C\Method\Aliphatic EPH 010523.M
 Quant Title : GC Extractables
 QLast Update : Thu Jan 05 04:54:00 2023
 Response via : Initial Calibration
 Integrator: ChemStation

Volume Inj. : 1 ul
 Signal Phase : Rxi-1ms
 Signal Info : 20M x 0.18mm x 0.18um

Compound	R.T.	Response	Conc Units

System Monitoring Compounds			
9) S ortho-Terphenyl (SURR)	11.538	402879	2.852 ug/ml
Spiked Amount	50.000	Recovery	= 5.70%
12) S 1-chlorooctadecane (S...	12.979	3164212	30.038 ug/ml
Spiked Amount	50.000	Recovery	= 60.08%
Target Compounds			
4) T n-Dodecane (C12)	6.389	41184	0.320 ug/ml
20) T n-Hexatriacontane (C36)	20.039	100317	0.902 ug/ml
22) T n-Tetracontane (C40)	21.665	130552	1.226 ug/ml

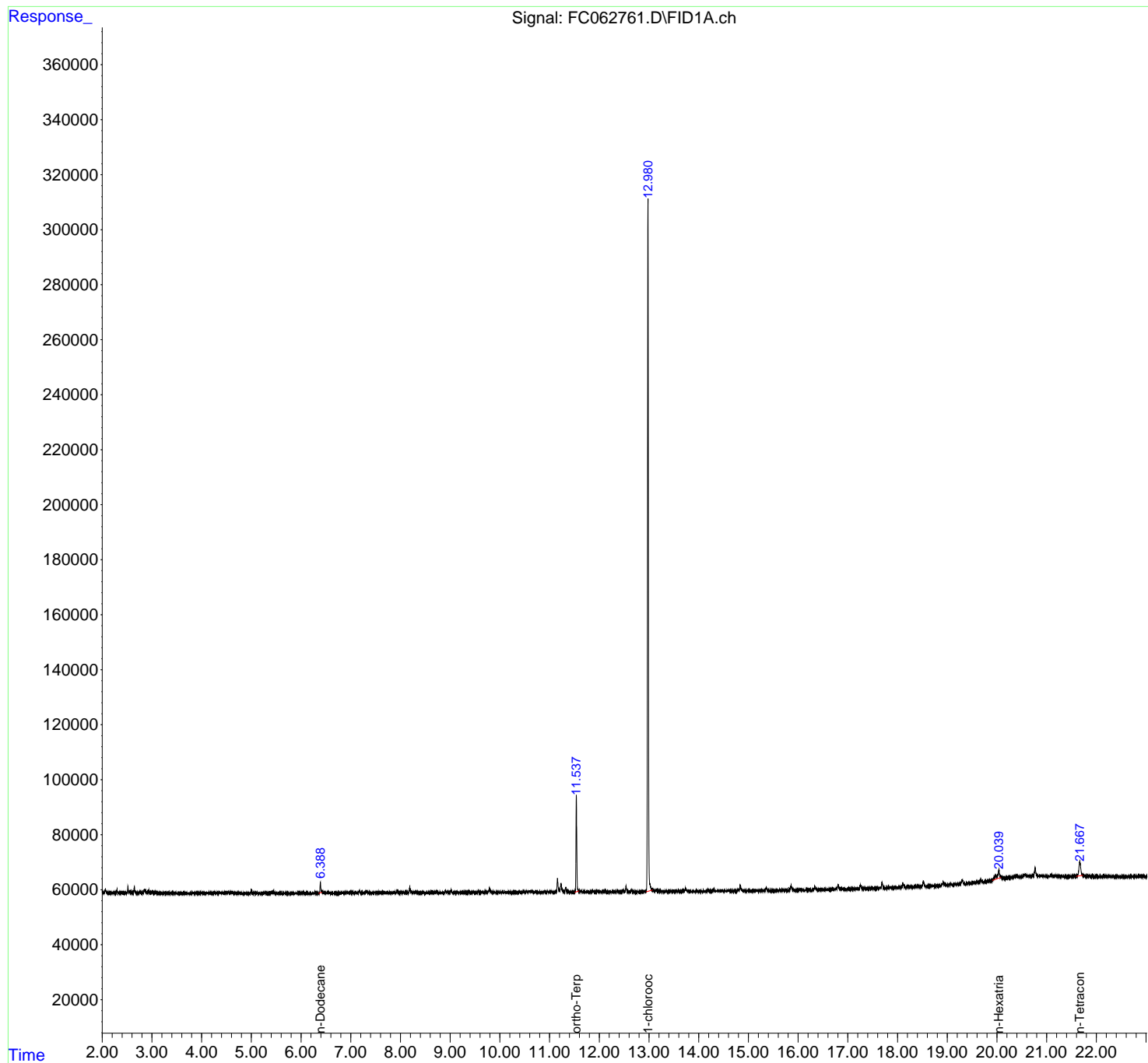
(f)=RT Delta > 1/2 Window

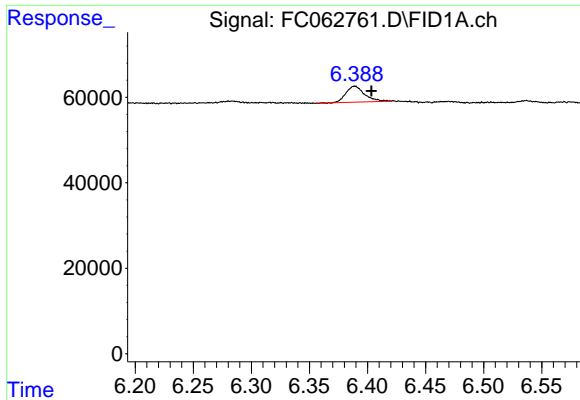
(m)=manual int.

Data Path : Z:\pestpcbsrv\HPCHEM1\FID_C\Data\FC012423AL\
Data File : FC062761.D
Signal(s) : FID1A.ch
Acq On : 24 Jan 2023 23:59
Operator : YP/AJ
Sample : 01251-03
Misc :
ALS Vial : 16 Sample Multiplier: 1

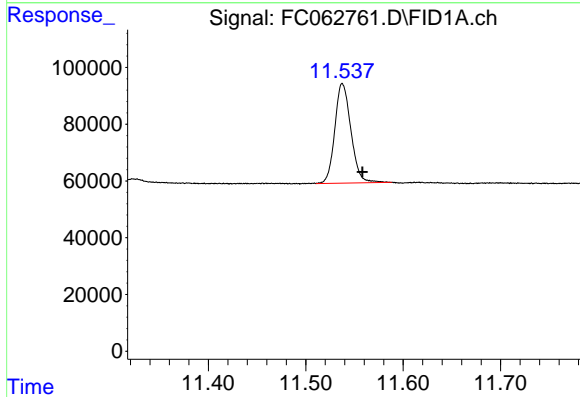
Integration File: autoint1.e
Quant Time: Jan 25 02:04:13 2023
Quant Method : Z:\pestpcbsrv\HPCHEM1\FID_C\Method\Aliphatic EPH 010523.M
Quant Title : GC Extractables
QLast Update : Thu Jan 05 04:54:00 2023
Response via : Initial Calibration
Integrator: ChemStation

Volume Inj. : 1 ul
Signal Phase : Rxi-1ms
Signal Info : 20M x 0.18mm x 0.18um

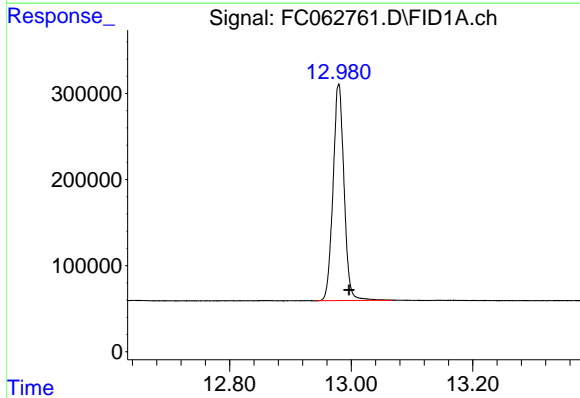




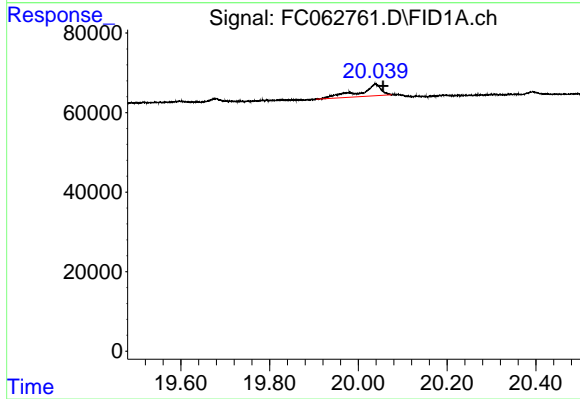
#4 n-Dodecane (C12)
R.T.: 6.389 min
Delta R.T.: -0.014 min
Response: 41184
Conc: 0.32 ug/ml



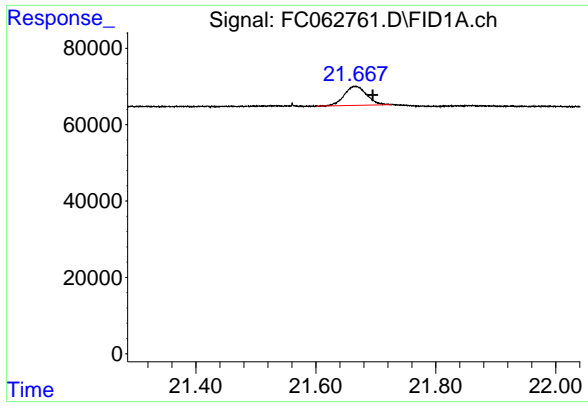
#9 ortho-Terphenyl (SURR)
R.T.: 11.538 min
Delta R.T.: -0.021 min
Response: 402879
Conc: 2.85 ug/ml



#12 1-chlorooctadecane (SURR)
R.T.: 12.979 min
Delta R.T.: -0.017 min
Response: 3164212
Conc: 30.04 ug/ml



#20 n-Hexatriacontane (C36)
R.T.: 20.039 min
Delta R.T.: -0.017 min
Response: 100317
Conc: 0.90 ug/ml



#22 n-Tetracontane (C40)

R.T.: 21.665 min
Delta R.T.: -0.030 min
Response: 130552
Conc: 1.23 ug/ml