

Data Path : Z:\pestpcbsrv\HPCHEM1\FID_C\Data\FC012622AL\
 Data File : FC058143.D
 Signal(s) : FID1A.CH
 Acq On : 27 Jan 2022 2:11
 Operator : AJ\MA
 Sample : N1248-01
 Misc :
 ALS Vial : 24 Sample Multiplier: 1

Instrument :
 FID_C
 ClientSampleId :

Integration File: autoint1.e
 Quant Time: Jan 27 02:37:41 2022
 Quant Method : Z:\pestpcbsrv\HPCHEM1\FID_C\Method\Aliphatic EPH 010522.M
 Quant Title : GC Extractables
 QLast Update : Wed Jan 05 12:13:43 2022
 Response via : Initial Calibration
 Integrator: ChemStation 6890 Scale Mode: Large solvent peaks clipped

Volume Inj. : 1 ul
 Signal Phase : Rxi-1ms
 Signal Info : 20M x 0.18mm x 0.18um

Compound	R.T.	Response	Conc Units

System Monitoring Compounds			
12) S 1-chlorooctadecane (S... Spiked Amount 50.000	12.132	4227408 Recovery =	28.682 ug/ml 57.36%
Target Compounds			
2) T n-Decane (C10)	3.615	124927	0.777 ug/ml
4) T n-Dodecane (C12)	5.585	219104	1.359 ug/ml
6) T n-Tetradecane (C14)	7.364	106061	0.642 ug/ml
15) T n-Hexacosane (C26)	14.996	104996	0.624 ug/ml
16) T n-Octacosane (C28)	15.980	102564	0.627 ug/ml
17) T n-Tricontane (C30)	16.838	378774	2.426 ug/ml
18) T n-Dotriacontane (C32)	17.657	281918	2.022 ug/ml
19) T n-Tetratriacontane (C34)	18.443	279820	2.251 ug/ml
20) T n-Hexatriacontane (C36)	19.219	181808	1.635 ug/ml

(f)=RT Delta > 1/2 Window

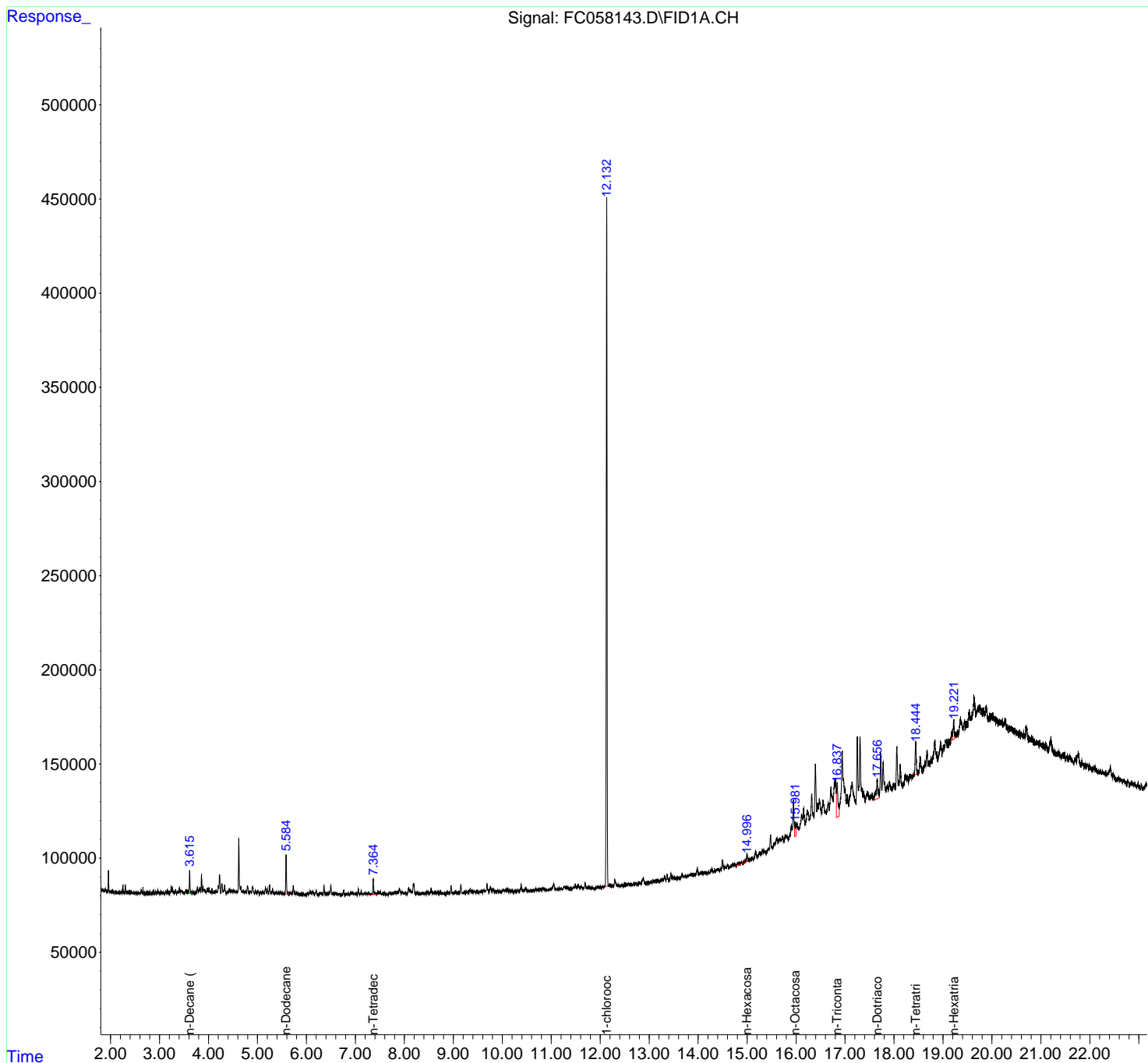
(m)=manual int.

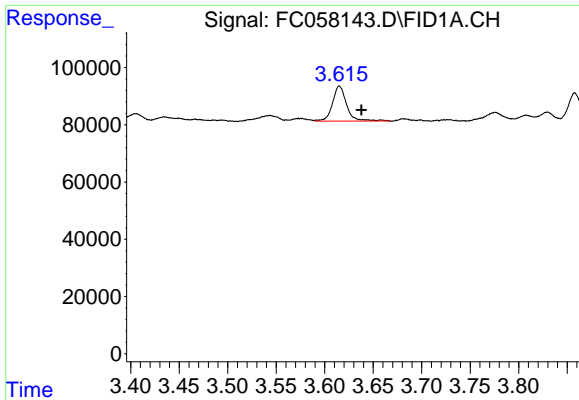
Data Path : Z:\pestpcbsrv\HPCHEM1\FID_C\Data\FC012622AL\
Data File : FC058143.D
Signal(s) : FID1A.CH
Acq On : 27 Jan 2022 2:11
Operator : AJ\MA
Sample : N1248-01
Misc :
ALS Vial : 24 Sample Multiplier: 1

Instrument :
FID_C
ClientSampleId :

Integration File: autoint1.e
Quant Time: Jan 27 02:37:41 2022
Quant Method : Z:\pestpcbsrv\HPCHEM1\FID_C\Method\Aliphatic EPH 010522.M
Quant Title : GC Extractables
QLast Update : Wed Jan 05 12:13:43 2022
Response via : Initial Calibration
Integrator: ChemStation 6890 Scale Mode: Large solvent peaks clipped

Volume Inj. : 1 ul
Signal Phase : Rxi-1ms
Signal Info : 20M x 0.18mm x 0.18um

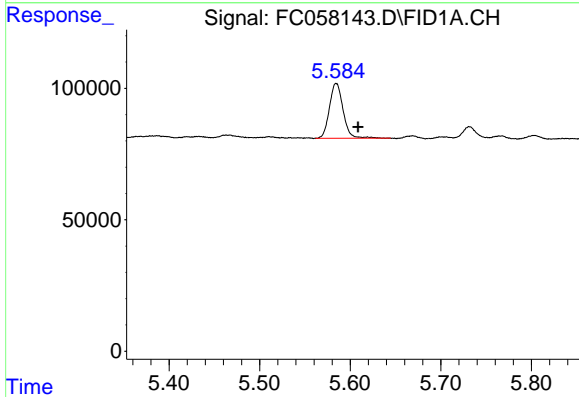




#2 n-Decane (C10)

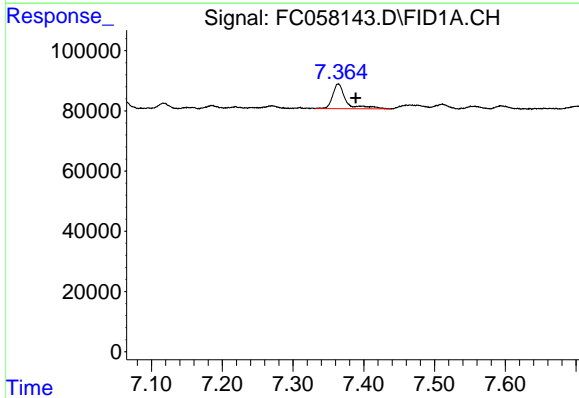
R.T.: 3.615 min
 Delta R.T.: -0.023 min
 Response: 124927
 Conc: 0.78 ug/ml

Instrument :
 FID_C
 ClientSampleId :



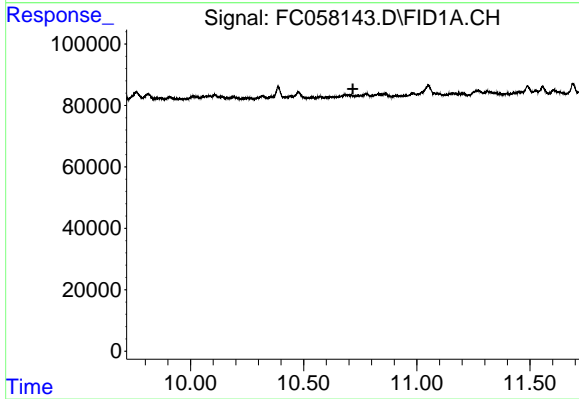
#4 n-Dodecane (C12)

R.T.: 5.585 min
 Delta R.T.: -0.024 min
 Response: 219104
 Conc: 1.36 ug/ml



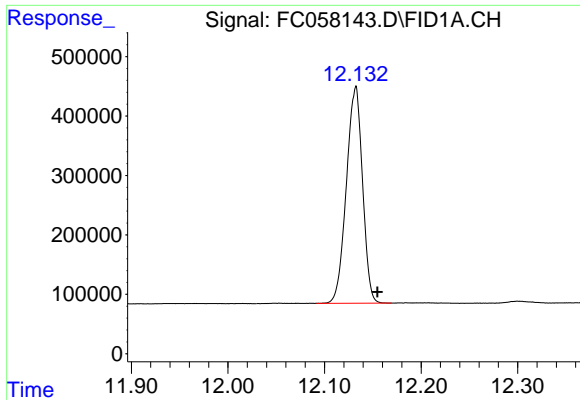
#6 n-Tetradecane (C14)

R.T.: 7.364 min
 Delta R.T.: -0.025 min
 Response: 106061
 Conc: 0.64 ug/ml



#9 ortho-Terphenyl (SURR)

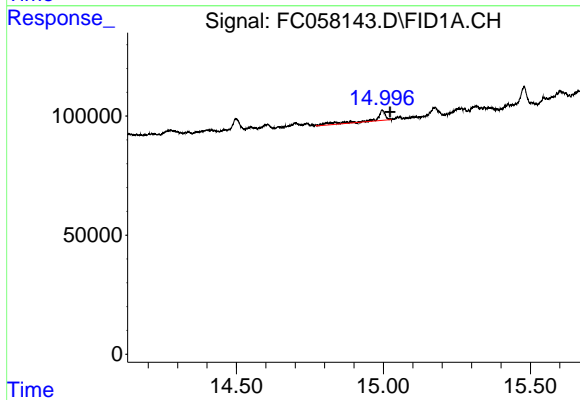
R.T.: 0.000 min
 Exp R.T. : 10.717 min
 Response: 0
 Conc: N.D.



#12 1-chlorooctadecane (SURR)

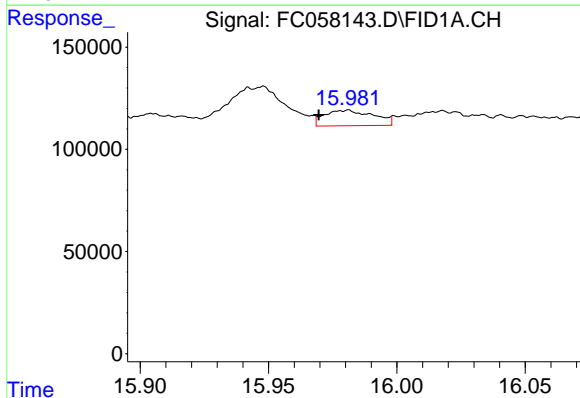
R.T.: 12.132 min
 Delta R.T.: -0.023 min
 Response: 4227408
 Conc: 28.68 ug/ml

Instrument :
 FID_C
 ClientSampleId :



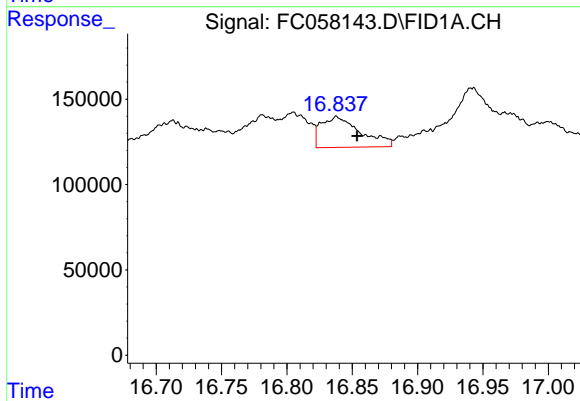
#15 n-Hexacosane (C26)

R.T.: 14.996 min
 Delta R.T.: -0.027 min
 Response: 104996
 Conc: 0.62 ug/ml



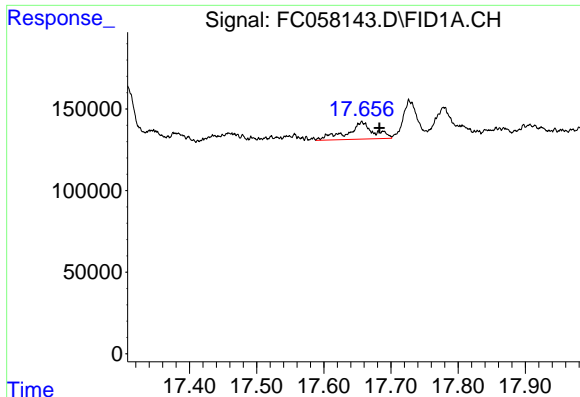
#16 n-Octacosane (C28)

R.T.: 15.980 min
 Delta R.T.: 0.010 min
 Response: 102564
 Conc: 0.63 ug/ml



#17 n-Tricontane (C30)

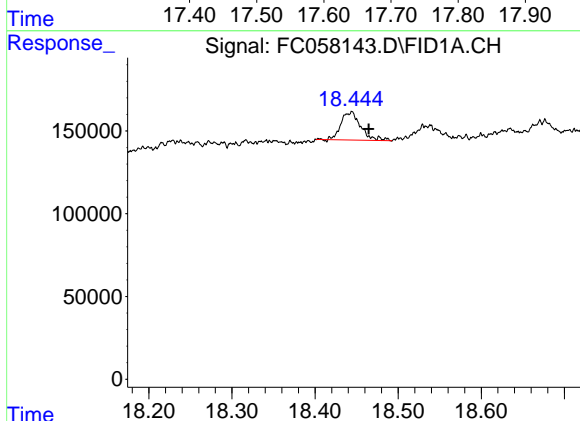
R.T.: 16.838 min
 Delta R.T.: -0.015 min
 Response: 378774
 Conc: 2.43 ug/ml



#18 n-Dotriacontane (C32)

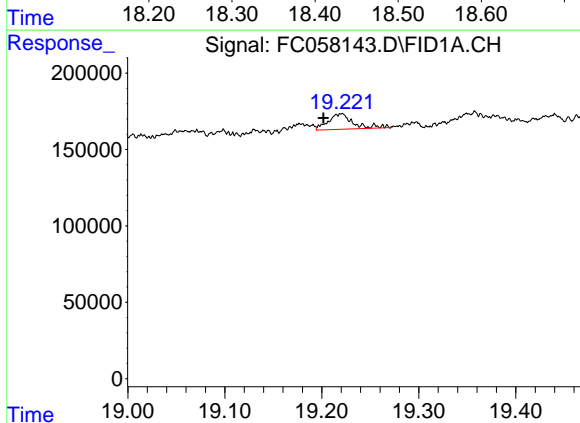
R.T.: 17.657 min
 Delta R.T.: -0.026 min
 Response: 281918
 Conc: 2.02 ug/ml

Instrument :
 FID_C
 ClientSampleId :



#19 n-Tetratriacontane (C34)

R.T.: 18.443 min
 Delta R.T.: -0.021 min
 Response: 279820
 Conc: 2.25 ug/ml



#20 n-Hexatriacontane (C36)

R.T.: 19.219 min
 Delta R.T.: 0.018 min
 Response: 181808
 Conc: 1.64 ug/ml