

Data Path : Z:\pestpcbsrv\HPCHEM1\FID_C\Data\FC012722AL\
 Data File : FC058161.D
 Signal(s) : FID1A.CH
 Acq On : 27 Jan 2022 16:31
 Operator : AJ\MA
 Sample : N1272-02
 Misc :
 ALS Vial : 8 Sample Multiplier: 1

Instrument :
 FID_C
 ClientSampleId :
 ETGI-348

Integration File: autoint1.e
 Quant Time: Jan 28 01:04:04 2022
 Quant Method : Z:\pestpcbsrv\HPCHEM1\FID_C\Method\Aliphatic EPH 010522.M
 Quant Title : GC Extractables
 QLast Update : Wed Jan 05 12:13:43 2022
 Response via : Initial Calibration
 Integrator: ChemStation 6890 Scale Mode: Large solvent peaks clipped

Volume Inj. : 1 ul
 Signal Phase : Rxi-1ms
 Signal Info : 20M x 0.18mm x 0.18um

Compound	R.T.	Response	Conc Units

System Monitoring Compounds			
9) S ortho-Terphenyl (SURR)	10.696	6535835	33.801 ug/ml
Spiked Amount	50.000	Recovery	= 67.60%
12) S 1-chlorooctadecane (S...	12.133	4892377	33.194 ug/ml
Spiked Amount	50.000	Recovery	= 66.39%

Target Compounds

(f)=RT Delta > 1/2 Window

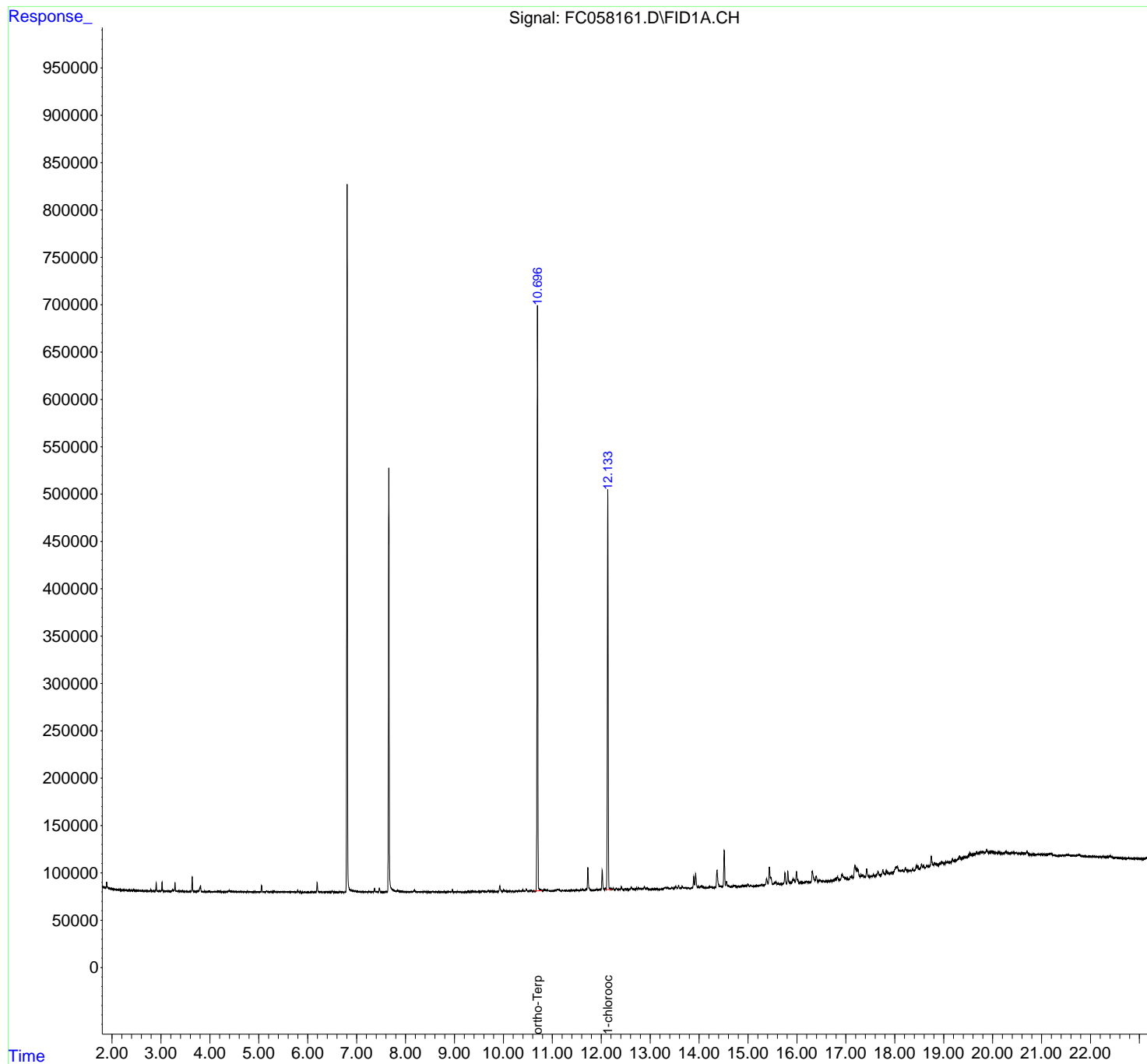
(m)=manual int.

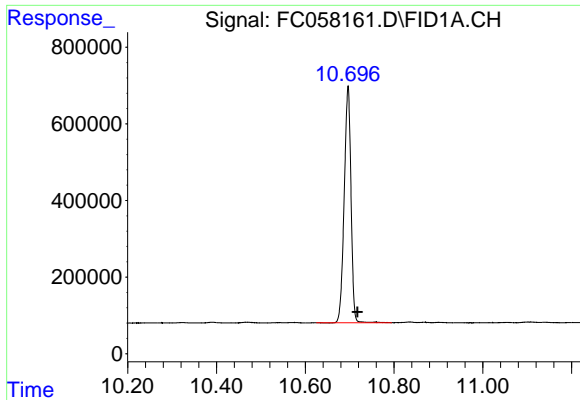
Data Path : Z:\pestpcbsrv\HPCHEM1\FID_C\Data\FC012722AL\
Data File : FC058161.D
Signal(s) : FID1A.CH
Acq On : 27 Jan 2022 16:31
Operator : AJ\MA
Sample : N1272-02
Misc :
ALS Vial : 8 Sample Multiplier: 1

Instrument :
FID_C
ClientSampleId :
ETGI-348

Integration File: autoint1.e
Quant Time: Jan 28 01:04:04 2022
Quant Method : Z:\pestpcbsrv\HPCHEM1\FID_C\Method\Aliphatic EPH 010522.M
Quant Title : GC Extractables
QLast Update : Wed Jan 05 12:13:43 2022
Response via : Initial Calibration
Integrator: ChemStation 6890 Scale Mode: Large solvent peaks clipped

Volume Inj. : 1 ul
Signal Phase : Rxi-1ms
Signal Info : 20M x 0.18mm x 0.18um

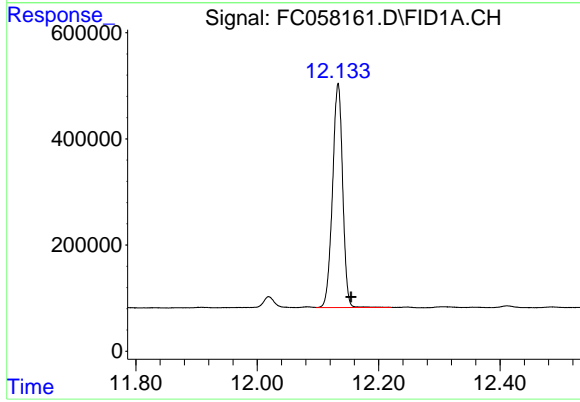




#9 ortho-Terphenyl (SURR)

R.T.: 10.696 min
Delta R.T.: -0.021 min
Response: 6535835
Conc: 33.80 ug/ml

Instrument :
FID_C
ClientSampleId :
ETGI-348



#12 1-chlorooctadecane (SURR)

R.T.: 12.133 min
Delta R.T.: -0.022 min
Response: 4892377
Conc: 33.19 ug/ml