

Data Path : Z:\pestpcbsrv\HPCHEM1\FID\_C\Data\FC012723AL\  
 Data File : FC062794.D  
 Signal(s) : FID1A.ch  
 Acq On : 27 Jan 2023 18:40  
 Operator : YP/AJ  
 Sample : 01285-03  
 Misc :  
 ALS Vial : 9 Sample Multiplier: 1

Instrument :  
 FID\_C  
 ClientSampleId :  
 EB-2023-1-24

Integration File: autoint1.e  
 Quant Time: Jan 28 00:08:52 2023  
 Quant Method : Z:\pestpcbsrv\HPCHEM1\FID\_C\Method\Aliphatic EPH 012623.M  
 Quant Title : GC Extractables  
 QLast Update : Fri Jan 27 04:11:29 2023  
 Response via : Initial Calibration  
 Integrator: ChemStation

Volume Inj. : 1 ul  
 Signal Phase : Rxi-1ms  
 Signal Info : 20M x 0.18mm x 0.18um

Compound	R.T.	Response	Conc Units
-----			
System Monitoring Compounds			
12) S 1-chlorooctadecane (S...	12.979	3052153	32.360 ug/ml
Spiked Amount	50.000	Recovery	= 64.72%

Target Compounds

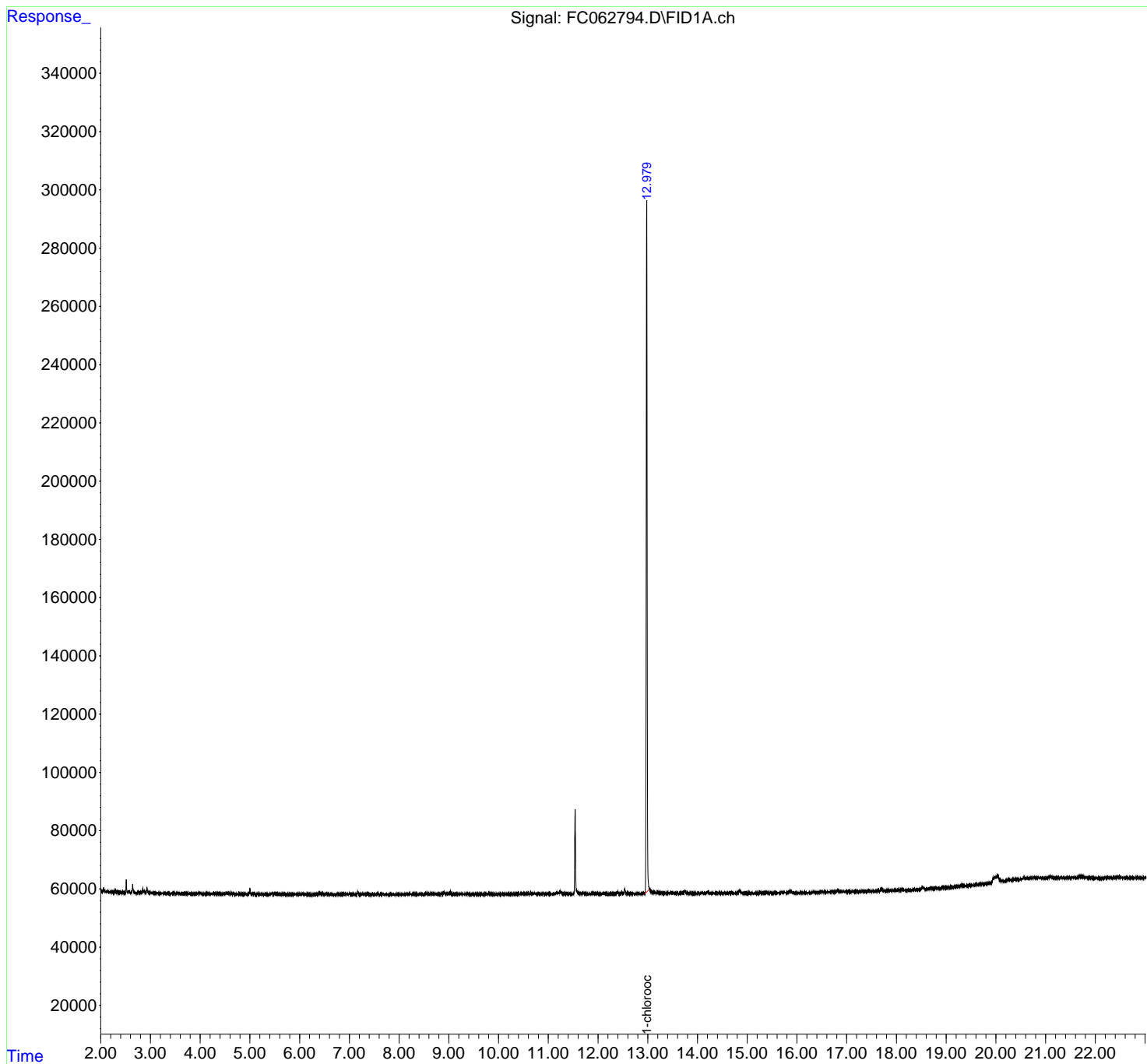
(f)=RT Delta > 1/2 Window (m)=manual int.

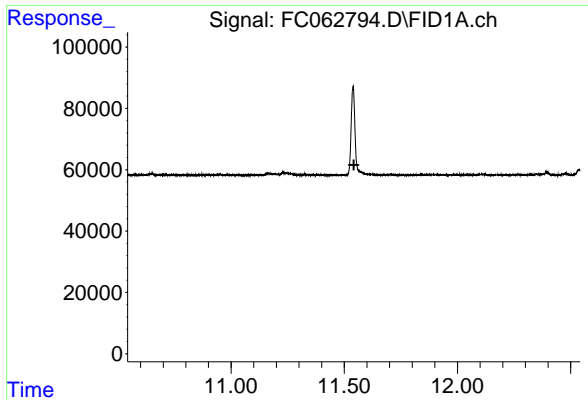
Data Path : Z:\pestpcbsrv\HPCHEM1\FID\_C\Data\FC012723AL\  
 Data File : FC062794.D  
 Signal(s) : FID1A.ch  
 Acq On : 27 Jan 2023 18:40  
 Operator : YP/AJ  
 Sample : 01285-03  
 Misc :  
 ALS Vial : 9 Sample Multiplier: 1

Instrument :  
 FID\_C  
 ClientSampleId :  
 EB-2023-1-24

Integration File: autoint1.e  
 Quant Time: Jan 28 00:08:52 2023  
 Quant Method : Z:\pestpcbsrv\HPCHEM1\FID\_C\Method\Aliphatic EPH 012623.M  
 Quant Title : GC Extractables  
 QLast Update : Fri Jan 27 04:11:29 2023  
 Response via : Initial Calibration  
 Integrator: ChemStation

Volume Inj. : 1 ul  
 Signal Phase : Rxi-1ms  
 Signal Info : 20M x 0.18mm x 0.18um

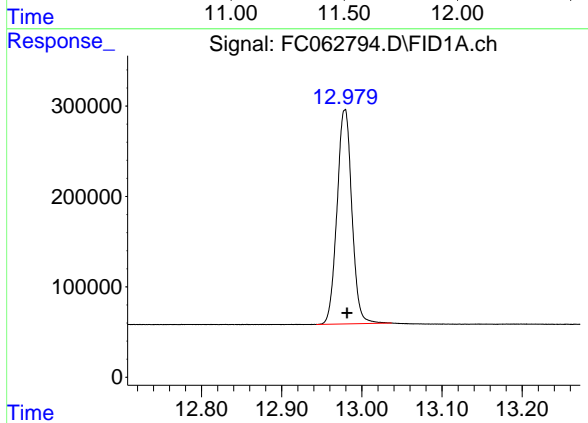




#9 ortho-Terphenyl (SURR)

R.T.: 0.000 min  
Exp R.T.: 11.543 min  
Response: 0  
Conc: N.D.

Instrument : FID\_C  
ClientSampleId : EB-2023-1-24



#12 1-chlorooctadecane (SURR)

R.T.: 12.979 min  
Delta R.T.: -0.003 min  
Response: 3052153  
Conc: 32.36 ug/ml