

Data Path : Z:\pestpcbsrv\HPCHEM1\FID_C\Data\FC012723AL\
 Data File : FC062796.D
 Signal(s) : FID1A.ch
 Acq On : 27 Jan 2023 20:04
 Operator : YP/AJ
 Sample : 01327-01
 Misc :
 ALS Vial : 11 Sample Multiplier: 1

Instrument :
 FID_C
 ClientSampleId :
 N48965

Integration File: autoint1.e
 Quant Time: Jan 28 00:09:14 2023
 Quant Method : Z:\pestpcbsrv\HPCHEM1\FID_C\Method\Aliphatic EPH 012623.M
 Quant Title : GC Extractables
 QLast Update : Fri Jan 27 04:11:29 2023
 Response via : Initial Calibration
 Integrator: ChemStation

Volume Inj. : 1 ul
 Signal Phase : Rxi-1ms
 Signal Info : 20M x 0.18mm x 0.18um

Compound	R.T.	Response	Conc Units

System Monitoring Compounds			
12) S 1-chlorooctadecane (S...	12.979	3665095	38.859 ug/ml
Spiked Amount	50.000	Recovery	= 77.72%

Target Compounds

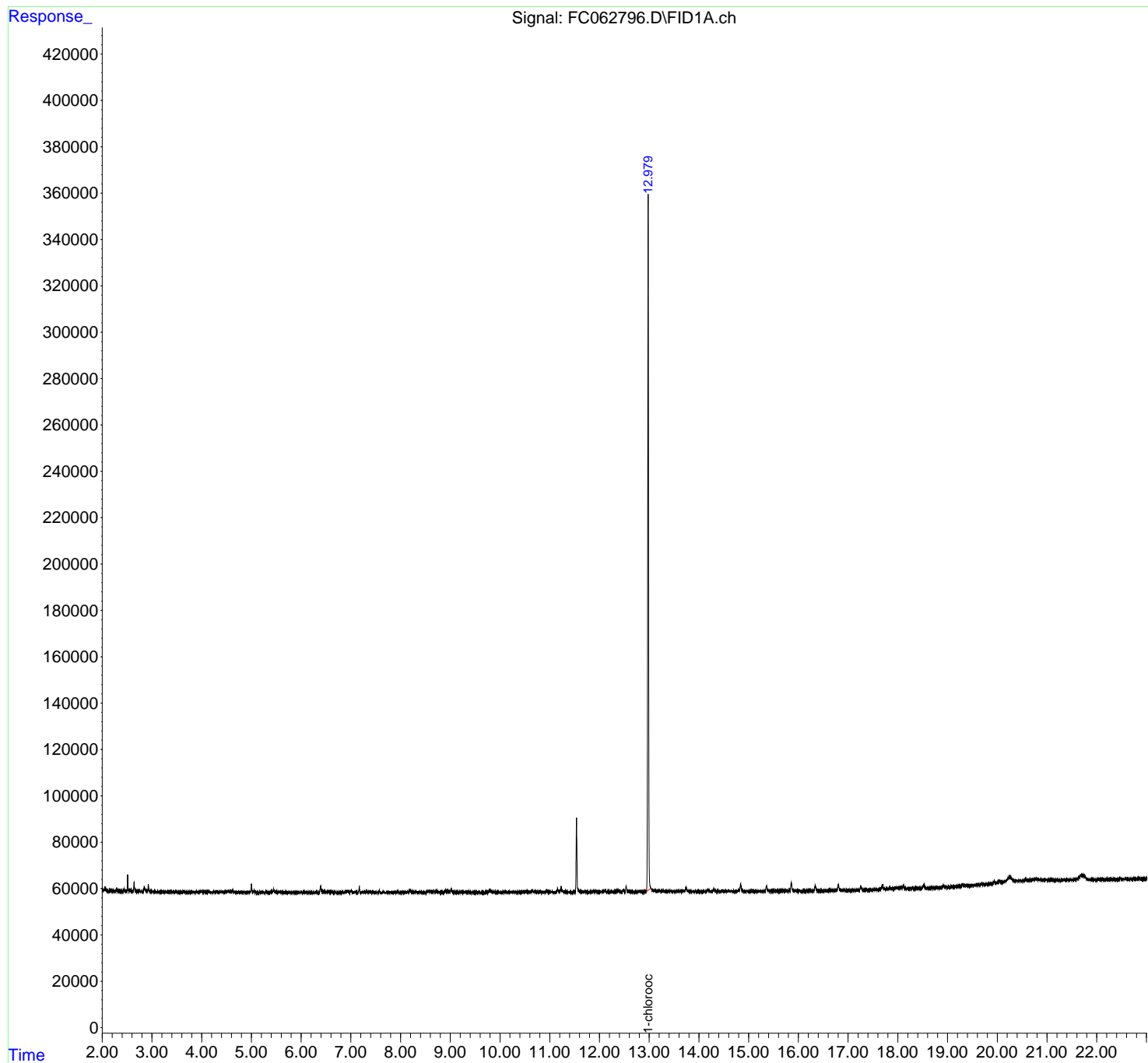
(f)=RT Delta > 1/2 Window (m)=manual int.

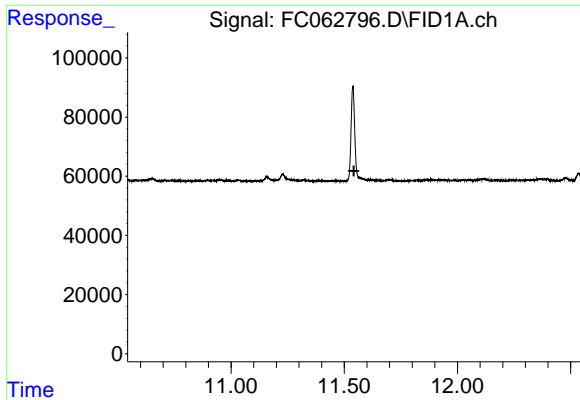
Data Path : Z:\pestpcbsrv\HPCHEM1\FID_C\Data\FC012723AL\
 Data File : FC062796.D
 Signal(s) : FID1A.ch
 Acq On : 27 Jan 2023 20:04
 Operator : YP/AJ
 Sample : 01327-01
 Misc :
 ALS Vial : 11 Sample Multiplier: 1

Instrument :
 FID_C
 ClientSampleId :
 N48965

Integration File: autoint1.e
 Quant Time: Jan 28 00:09:14 2023
 Quant Method : Z:\pestpcbsrv\HPCHEM1\FID_C\Method\Aliphatic EPH 012623.M
 Quant Title : GC Extractables
 QLast Update : Fri Jan 27 04:11:29 2023
 Response via : Initial Calibration
 Integrator: ChemStation

Volume Inj. : 1 ul
 Signal Phase : Rxi-1ms
 Signal Info : 20M x 0.18mm x 0.18um

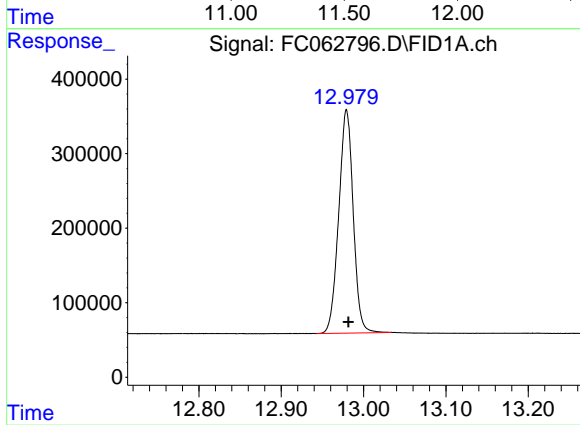




#9 ortho-Terphenyl (SURR)

R.T.: 0.000 min
Exp R.T.: 11.543 min
Response: 0
Conc: N.D.

Instrument :
FID_C
ClientSampleId :
N48965



#12 1-chlorooctadecane (SURR)

R.T.: 12.979 min
Delta R.T.: -0.002 min
Response: 3665095
Conc: 38.86 ug/ml