

Data Path : P:\HPCHEM1\FID C\Data\FC012918AL\
 Data File : FC032107.D
 Signal(s) : FID1A.CH
 Acq On : 30 Jan 2018 6:15
 Operator : UA/AJ
 Sample : J1009-07DL 20X
 Misc :
 ALS Vial : 24 Sample Multiplier: 1

Integration File: autoint1.e
 Quant Time: Jan 30 06:54:03 2018
 Quant Method : P:\HPCHEM1\FID_C\Method\Aliphatic EPH 011618.M
 Quant Title : GC Extractables
 QLast Update : Tue Jan 16 13:50:30 2018
 Response via : Initial Calibration
 Integrator: ChemStation 6890 Scale Mode: Large solvent peaks clipped

Volume Inj. : 1 ul
 Signal Phase : Rxi-lms
 Signal Info : 20M x 0.18mm x 0.18um

Compound	R.T.	Response	Conc Units

System Monitoring Compounds			
9) S ortho-Terphenyl (SURR)	11.171	281350	2.190 ug/ml
Spiked Amount	50.000	Recovery	= 4.38%
12) S 1-chlorooctadecane (S...	12.613	10710224	114.659 ug/ml
Spiked Amount	50.000	Recovery	= 229.32%

Target Compounds

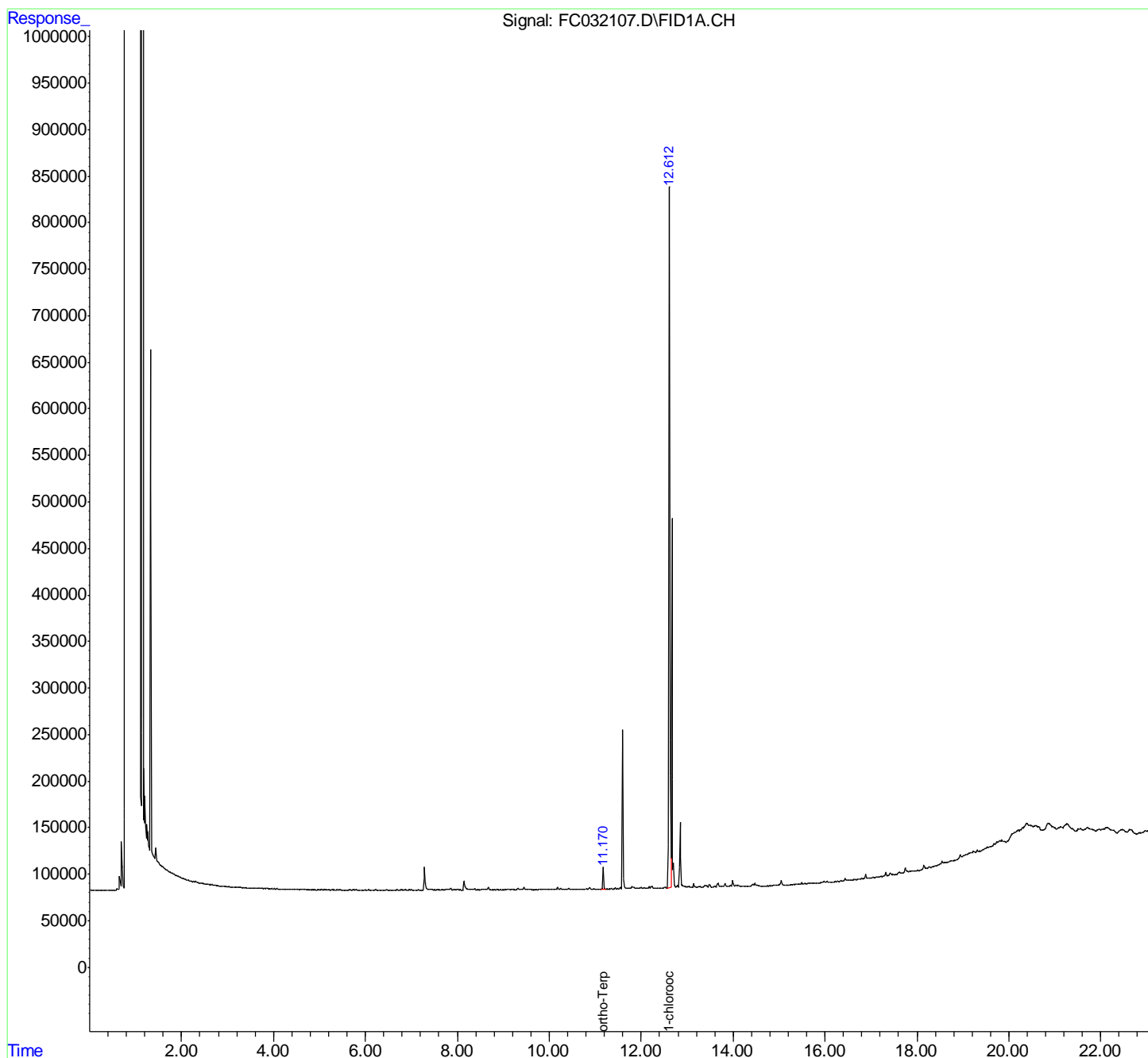
(f)=RT Delta > 1/2 Window

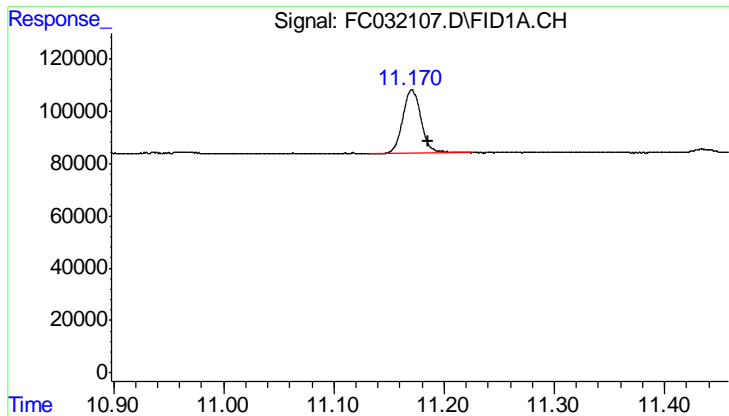
(m)=manual int.

Data Path : P:\HPCHEM1\FID C\Data\FC012918AL\
 Data File : FC032107.D
 Signal(s) : FID1A.CH
 Acq On : 30 Jan 2018 6:15
 Operator : UA/AJ
 Sample : J1009-07DL 20X
 Misc :
 ALS Vial : 24 Sample Multiplier: 1

Integration File: autoint1.e
 Quant Time: Jan 30 06:54:03 2018
 Quant Method : P:\HPCHEM1\FID_C\Method\Alaphatic EPH 011618.M
 Quant Title : GC Extractables
 QLast Update : Tue Jan 16 13:50:30 2018
 Response via : Initial Calibration
 Integrator: ChemStation 6890 Scale Mode: Large solvent peaks clipped

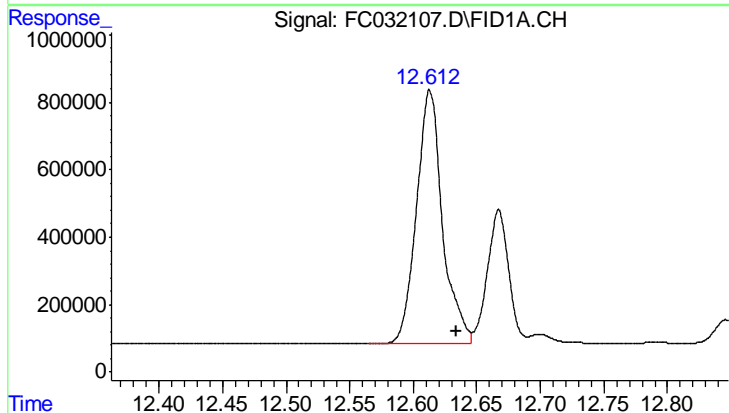
Volume Inj. : 1 ul
 Signal Phase : Rxi-lms
 Signal Info : 20M x 0.18mm x 0.18um





#9 ortho-Terphenyl (SURR)

R.T.: 11.171 min
Delta R.T.: -0.014 min
Response: 281350
Conc: 2.19 ug/ml



#12 1-chlorooctadecane (SURR)

R.T.: 12.613 min
Delta R.T.: -0.021 min
Response: 10710224
Conc: 114.66 ug/ml